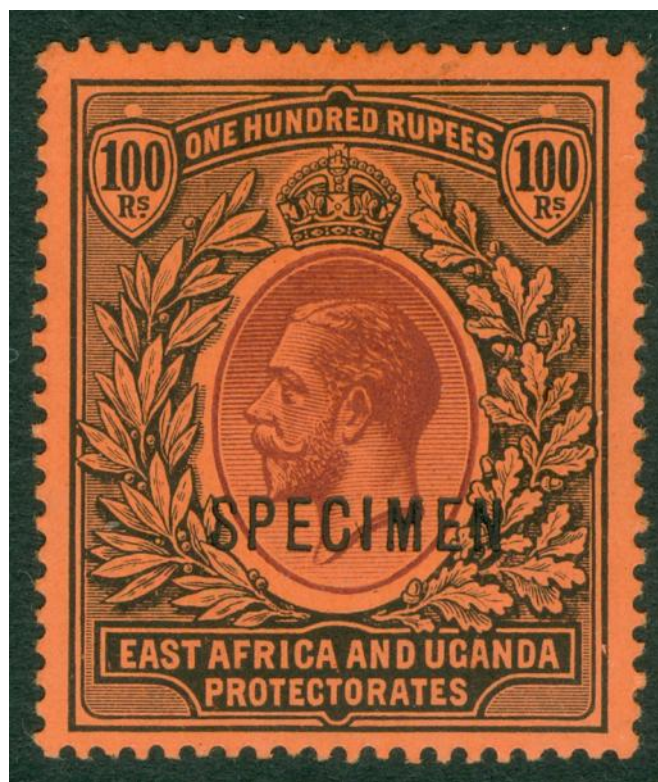


# British and colonial stamps

December great Britain & commonwealth



166

view our online shop & lists-  
[www.stevenallenstamps.com](http://www.stevenallenstamps.com)

10% Discount on Orders over £200  
15% Discount on Orders over £500

Email : [Steveallen-orders@live.co.uk](mailto:Steveallen-orders@live.co.uk)  
Tel : 02392 253 133



1

SG 2 1d black plate 1b lettered CL. Fine used with a black Maltese cross. 4 good/huge margins. £175



2

SG 7 1d red-brown plate 8 lettered ME. Very fine used. 4 fine margins CAT £225. £70



3

SG 7 1d red-brown plate 10 lettered IC. Very fine used with an upright Maltese cross. 4 margins CAT £200. £120



4

SG 8m 1d red-brown lettered HA. Very fine used with a number '6' in Maltese cross. 4 margins CAT £160. £70



5

SG 8m 1d red-brown lettered NK. Very fine used with a number '8' in cross. 4 margins CAT £160. £70



6

SG 8 1d red-brown plate 31 variety 'P' converted to R'. Very fine used. 4 margins (spec BS20b) CAT £110. £35



7

SG 8 spec BS19d plate 30 variety 'P' converted to R'. Very fine used. 4 margins CAT £125. £45



8

SG 14 2d blue plate 4 lettered PB. A fine fresh lightly mounted mint example. 3+ margins just touched at 'P' square CAT £5000. £375



9

SG 14 1841 2d blue plate 4 block of 4. Good used with '177' numerals. Full margins CAT £1500. £325



10

SG 24a 1d deep red-brown. Very fine used part numeral, leaves Queens profile clear. £60



11

SG 45 2d blue plate 14 lettered JJ. Very fine used CDS example. £35



12

SG 45 2d blue plate 13 lettered AA. A fine fresh mounted mint example CAT £375. £85



13

SG 142 2½d blue plate 19. A fine fresh lightly mounted mint example CAT £575. £150



14

SG 158 3d rose plate 20. Very fine used part CDS 'box cancel' leaving Queens profile clear CAT £150. £45



15

SG 165-169. ½d-5d set of 5. Very fine used CAT £350. £75





**16**

SG 178 2/6 lilac. Very fine used with a Smithfield marker registered CDS, 19<sup>th</sup> Nov 1900 CAT £160. £45



**17**

SG 183a 10/- pale ultramarine. A fine fresh lightly mounted mint example with good colour & well centred CAT £2500. £875



**18**

SG 185 £1 brown-lilac. Good used with a Cardiff Docks CDS & box cancel. Well centred & good deep colour. Raybaudi cert CAT £3000. £425



**19**

SG 210 10d dull purple & carmine. Fine unmounted mint marginal example CAT £90. £40



**20**

SG 211 1/- dull green. Very fine used with East cheap, Jan 5<sup>th</sup> 1894 CDS. £40



**21**

SG 215-257 Edward VII De La Rue set. 1/2d to 1/- . Fine unmounted mint. £480



**22**

Edward VII 1911-1913 Somerset House printings 1/2d to 1/- set of 8. Fine fresh mounted mint examples. £120



**23**

Edward VII De La Rue, chalky print 1/2d to 1/- set of 9 values. Fresh mounted mint examples. £110





**24**

SG 224 1½d slate-purple & bluish-green. Very fine used with a Canterbury, Oct 15<sup>th</sup> 1910 CDS. £15



**25**

SG 233b 3d pale purple on lemon. Very fine used with an Aberdeen, May 25<sup>th</sup> 1909 CDS. £10



**26**

SG 236a 4d green & chocolate-brown. Very fine used with an upright Caistor CDS, Nov 5<sup>th</sup> 1907. £20



**27**

SG 242 5d dull purple & ultramarine. Very fine used with an Erndale, March 29<sup>th</sup> 1905. £15



**28**

SG 249 7d grey-black. Very fine used with a Sheffield, April 23<sup>rd</sup> 1912. £15



**29**

SG 249a 7d deep grey-black Spec M33(2). Very fine used with a Bitten Southampton CDS, Sept 17<sup>th</sup> 1913 CAT £100. £40



**30**

SG 249 7d grey-black. Very fine used marginal block of 4 cancelled with Guernsey, Feb 24<sup>th</sup> 1912 CDS. £75



**31**

SG 257 1/- dull green & bright carmine. Very fine used with light CDS cancels CAT £200. £45



**32**

SG 257 1/- dull green & bright carmine. Very fine used with a Grantown on Spey CDS. £20



**33**

SG 258 1/- dull green & carmine. Very fine used CAT £40. £15



**34**

SG 266 £1 dull blue-green. Very fine used with a Lombard street CDS. Good colour & well centred CAT £825. £220



**35**

SG 284 2½d dull blue. Very fine used with a Hotham, Aug 28<sup>th</sup> 1912 CDS. £10



**36**

SG 285 3d greyish purple on lemon. Very fine used with a Shaldon, April 3<sup>rd</sup> 1912 CDS Spec M22(2). £15



**37**

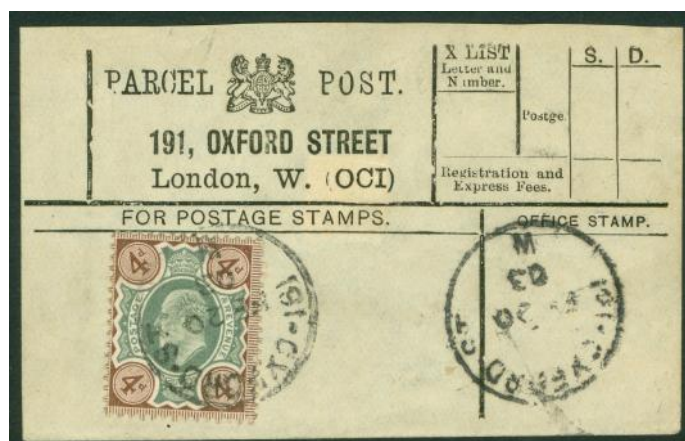
SG 285 3d purple on lemon. Very fine used on small piece with an Aldershot, Sept 9<sup>th</sup> 1912 CDS. £15





38

Edward VII 3d. Very fine used on parcel post label cancelled with a Little Sussex place, 16<sup>th</sup> July 1913 CDS. £20



39

Edward VII 4d. Very fine used on parcel post label with a 191 Oxford St CDS, March 20<sup>th</sup> 1903. £20



40

SG 417 10/- dull grey-blue block of 6. Fine used with Guernsey CDS's. A scarce multiple. £320



41

SG 418-429. 1924 block cypher set of 12. Fine unmounted mint CAT £250. £120



42

SG O6 2½d I.R official. Fine used CAT £180. £35



43

SG O65s 2½d dull purple & pale green GOVT parcels, overprinted specimen. Very lightly mounted mint CAT £300. £150



44

SG O66s 6d purple-rose GOVT parcels, overprinted specimen. A fine fresh unmounted marginal example CAT £250. £180





45

SG 067s 9d dull purple & blue GOVT parcels, overprinted specimen. A fine fresh mounted mint example CAT £300. £90



46

SG 072 1/- dull green GOVT parcels, overprinted specimen. Mounted mint, good colour CAT £400. £130



47

SG 95-97 Antigua 1937. 1d, 1½d & 2½d perf specimen set of 3. Fine mounted mint CAT £100. £45



48

SG Z39 Ascension 1912-22. ½d green. Superb used with a crisply struck Ascension Oct 1918 CDS, corner perf missing CAT £85. £20



49

SG Z42 Ascension 1912-22. 2d orange. Superb used with a crisply struck Ascension 2<sup>nd</sup> Oct 1918 CDS CAT £95. £65



50

SG Z43 Ascension 1912-22. 2½d blue. Superb used with a crisply struck Ascension 2<sup>nd</sup> Oct 1918 CDS CAT £130. £90



51

SG Z44 Ascension 1912-22. 3d violet. Superb used with a crisply struck Ascension 2<sup>nd</sup> Oct 1918 CDS CAT £180. £130



52

SG Z47 Ascension 1912-22. 6d purple. Superb used with a crisply struck Ascension 2<sup>nd</sup> Oct 1918 CDS CAT £200. £150



53

SG 45s Australia 1915-27. £2 black & rose, overprinted specimen. Lightly mounted mint. £325



54

SG 1s-4s, 6s-9s & 11s Barbuda 1922. ½d to 5/- part set of specimens. 9 values (missing 6d & 1/-). Fine mounted mint. £120



55

SG 116-124 Barbados 1897-98. ¼-2/6 set of 9, overprinted specimen. Fine mounted mint CAT £250. £140



56

SG 26 British Central Africa 1895. 2/6 black & bright magenta. Very fine used with a Tshiromo CDS CAT £375. £220



57

SG 27 British Central Africa 1895. 3/- black & yellow. Very fine used with a Tshiromo double ring CDS CAT £90. £50



58

SG 28 British Central Africa 1895. 5/- black & olive. Very fine used with Tshiromo double ring CDS CAT £300. £175





59

SG 29 British Central Africa 1895. £1 black & yellow-orange. Very fine used with an upright Tshiromo CDS CAT £650. £325



60

SG 42s British Central Africa 1896. £25 black & green, watermark CC, over-printed specimen. A fine lightly mounted mint example. £525



61

SG 48s British Central Africa 1897-1900. 2/6 black & ultramarine, overprinted specimen. A fine fresh mounted mint example. £25



62

SG 51s British Central Africa 1897-1900. £1 black & dull purple, over-printed specimen. Very lightly mounted mint. £175



63

SG 51 British Central Africa 1897-1900. £1 black & dull purple. A fine fresh lightly mounted mint example with good colour & centring CAT £600. £420



64

SG 52s British Central Africa 1897-1900. £10 black & yellow, over-printed specimen. Lightly mounted mint. £290



65

SG 59s-66s British Central Africa 1903-04. 1/4d-£1 set of 9, overprinted specimen. Mounted mint, 2/6 has small reverse thin CAT £450. £275



66

SG 92s-96s British East Africa 1897. 1r-5r set of 5, overprinted specimen. Fresh mounted mint, tiny reverse thin at top on 2r value. £160



67

SG 98 British East Africa 1897-1903. 20r pale green. Unmounted mint. Good colour & well centred CAT £1300. £975



68

SG 98 British East Africa 1897. 20r pale green. A fine fresh lightly mounted mint CAT £1300. £875



69

SG 98 British East Africa 1897-1903. 20r pale green, overprinted specimen. A fine fresh lightly mounted mint example CAT £180. £110





70

SG 99s British East Africa 1897. 50r mauve. A fine fresh lightly mounted mint example CAT £400. £325



71

SG 11 British Guiana 1853-59. 1c vermilion. Imperf, original printing. Very fine used with a Demerara CDS. 4 fine-large margins CAT £1700. RPS cert & BPA certs. £1250



72

SG 12 British Guiana 1853-59. 1c dull red, type A. Very fine used with a Demerara CDS, March 20<sup>th</sup> 1860. 4 large margins CAT £2250. £1350



73

SG 259-269a British Guiana 1913-21. 1c-96c set of 11, overprinted specimen. Fresh mounted mint. 48c has reverse thin CAT £250. £130



74

SG 48b British Levant 1921. 45pi on 2/6 olive-brown. Very fine used part CDSM, leaves Kings profile clear CAT £65. £45



75

SG 62s-72s British Solomon Islands 1939-51. 1/2d to 10/- set perforated specimen. Fine unmounted mint. Scarce. £375



76

SG 73-74s British Solomon Islands 1946 Victory pair, perf specimen. Unmounted mint. Very scarce in this quality CAT £110. £95



77

SG B10 Cameroon 1915. 1s on 1m carmine with variety 'S' inverted. A fine fresh lightly mounted mint marginal example CAT £1000. £475



78

SG B11a Cameroon 1915. 2s on 2m blue with variety 'S' inverted. A fine fresh unmounted mint marginal example AT £1000. £750



79

SG B12a Cameroon 1915. 3s on 3m violet-black with variety 'S' inverted. A fresh lightly mounted marginal example. Small reverse gum thin CAT £1000. £175



80

SG 1 Cape of good hope 1853. 1d pale brick-red. A stunning example. Very fine used, full fine/large margins CAT £450. £325



81

SG 3a Cape of good hope 1853. 1d brown-red. Fine used, full margins CAT £375. Sergio Sismondo cert. £130





**82**

SG 27 Cape of good hope 1868. 4d on 6d deep lilac. A fine fresh mounted mint example CAT £650. BPA cert. £275



**83**

SG 54 Cape of good hope 1884-90. 5/- orange. A fine fresh very lightly mounted mint example CAT £160. £95



**84**

SG 68 Cape of good hope 1893-98. 5/- brown-orange. A fine fresh lightly mounted mint example CAT £160. £85



**85**

SG 78 Cape of good hope 1902-04. 5/- brown-orange. Unmounted mint CAT £160. £120



**86**

SG 6 Colony of Canada 1852-57. 3d deep red vertical pair. Very fine used. Full fine/large margins CAT £550. £375



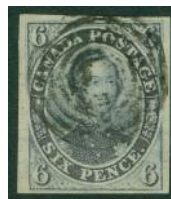
**87**

SG 7 Colony of Canada 1852-57. 3d scarlet-vermilion. Very fine used. Full fine/large margins CAT £275. £150



**88**

SG 8 Colony of Canada 1852-57. 3d brown-red vertical pair. Superb used. 4 good/large margins CAT £550. £420



**89**

SG 9 Colony of Canada 1852-57. 6d slate-violet. Very fine used with 4 good/large margins CAT £1200. £750



**90**

SG 14 Canada 1852-57. 10d dull blue. Very fine used, full margins CAT £2000. £625



**91**

SG 15 Canada 1855. 10d blue-deep blue. Fine used, full margins CAT £2000. £750



**92**

SG 15 Canada 1855. 10d blue on thin wove paper. Very fine used, full margins CAT £2000. David Brandon cert. £750



**93**

SG 17 Colony of Canada 1852-57. 1/2d deep rose vertical pair. Superb used with a '37' 4 ring single CDS. Full close/large margins. Exceptional quality CAT £1300. £875



**94**

SG 17 Colony of Canada 1852-57. 1/2d deep rose. A fine fresh mint example without gum. 4 large margins CAT £1100. £350



**95**

SG 18 Colony of Canada 1852-57. 3d red. Fine used. 4 fine margins CAT £450. £200





96

SG 18 Colony of Canada 1852-57. 3d red. Very fine used. 4 close/fine margins CAT £450. £150



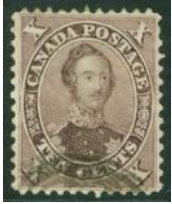
97

SG 18 Colony of Canada 1852-57. 3d red. Very fine used. 4 fine margins CAT £450. £200



98

SG 32 Colony of Canada 1859. 5c deep red. Mounted mint CAT £450. £130



99

SG 34 Canada 1859. 10c purple. Very fine used CAT £100. £45



100

SG 36 Canada 1859. 10c brown. Very fine used with a blue '49' circular cancel CAT £120. £60



101

SG 36 Canada 1859. 10c brown. Very fine used with an Ottawa CDS CAT £120. £65



102

SG 36 Canada 1859. 10c brown. Very fine used CAT £120. £35



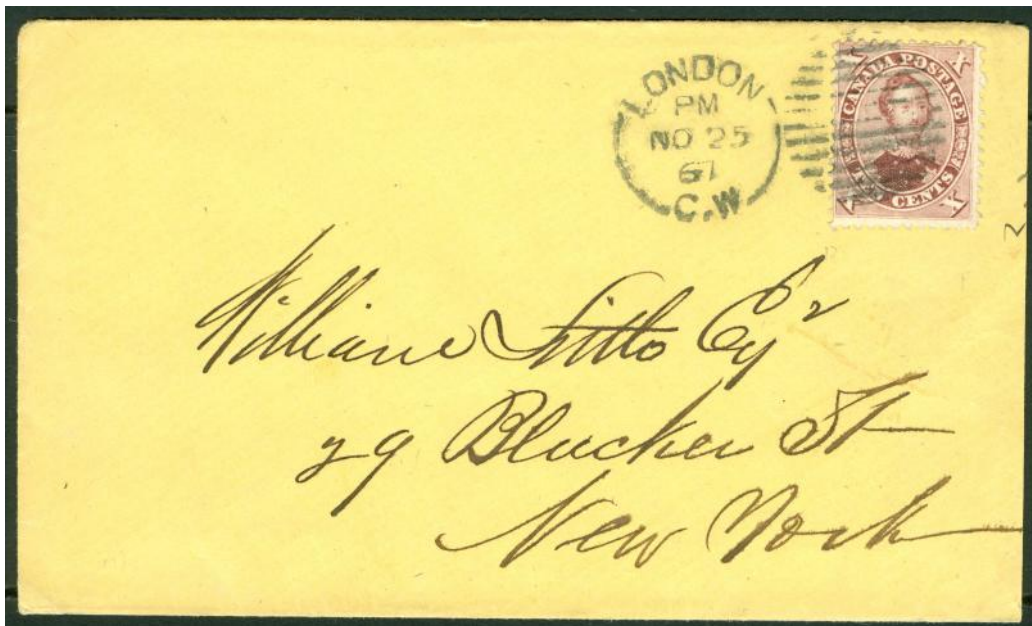
103

SG 37 Canada 1859. 10c dull violet. Very fine used CAT £100. £35



104

SG 38 Canada 1859. 10c bright red-purple. Very fine used CAT £100. £30



105

SG 38 Colony of Canada 1859. 10c bright red-purple used on envelope to New York, 27<sup>th</sup> November 1867. Fine clean condition. £240



106

SG 39 Canada 1859. 12½ deep yellow-green. Very fine used CDS example CAT £80. £50



107

SG 39 Canada 1859. 12½ deep yellow-green. Very fine used CDS example CAT £80. £50



108

SG 44 Canada 1864. 2c perf 12, rose-red. Very fine used CDS example CAT £225. £85





109

SG 225-227 Canada 1915 War Tax 5c, 20c & 50c set of 3. Fine mounted mint CAT £450. £175



110

SG 225/231 Canada 5c & 2c used on small piece 12<sup>th</sup> August 1915 CAT £200. £85



111

Colony of Canada 1859. 5c early proof block of 4 with part inscription on thick card. Full margins. £375



112

Colony of Canada 1859. 5c early proof marginal block of 4 on India paper, overprinted specimen. Very fresh. Full fine/huge margins. £375



113

Colony of Canada 1852-57. 3d Beaver imperf plate proof on thick card, overprinted specimen in red. 4 fine margins. A lovely fresh example. £175



114

Colony of Canada 1852-57. 3d Beaver imperf plate proof on thick card, overprinted specimen in green. 4 fine margins. A lovely fresh example. £175



115

Colony of Canada 1859. 5c early proof in yellow. A fine fresh example with 4 large/huge margins. £95



116

Colony of Canada 1859. Proofs of the 10c value x5 in different colours. 2 on thick card others on thin paper. Full margin examples. £450



117

Colony of Canada 1859. 10c plate proof vertical pair on India paper with inscription. Full margins. £220



118

Colony of Canada 1859. 10c proof block of 4 on India paper, overprinted specimen in red. Very fresh, full-large margins. £450



119

Colony of Canada 1857. 10d plate proof on India paper in the issued colour. Very fresh. A lovely example. £275





**120**

Colony of Canada 1857. 10d plate proof in unissued grey-black colour. Very fresh. 4 fine margins. £175



**121**

Colony of Canada 1857. 10d plate proof in the issued colour, overprinted specimen vertically in red on thick card. 4 fine margins. £175



**122**

Colony of Canada 1859-1878 (Posthumous) block of 4 plate proof in orange on thick card. Full margins. Very fresh. £375



**123**

Colony of Canada 1857. 12½c colour trial imperforate plate proof in green on India paper affixed to thin card. Very fresh, full margins. £575



**124**

Colony of Canada 1857. 6d plate proof block of 4 with inscription Rawdon, Wright, Hatch & Edson, New York. Overprinted specimen vertically in red. Fine-large margins. £575



**125**

Colony of Canada 1857. 12d black plate proof in grey-black, overprinted specimen vertically in red. 4 fine margins. £175



**126**

Colony of Canada 1857. 6d plate proof in the unissued green shade. A lovely fresh example with 4 close/huge margins. £180



**127**

(SG 17) Colony of Canada 1857. ½d plate proof block of 4 in unissued grey-black shade, overprinted specimen vertically in red. Fine-large margins with inscription at base. £450



**128**

Colony of Canada 1864. 1c plate proof on India paper with added imprint on thick card. Very fresh full/huge margins. £375



**129**

(SG 17) Colony of Canada 1857 plate proof imperf block of 4 on India paper. An exceptionally fresh example with full margins. £475



**130**

(SG 17) Colony of Canada 1857. ½d deep rose imperf overprinted specimen vertically in green. 4 fine/huge margins. £15



**131**

Colony of Canada 1864. 2c plate proof on India paper. Very fresh, full margins. £75



**132**

Colony of Canada 1864. 2c plate proof strip of 3 in green on India paper with inscription. £220



**133**

SG 1 Ceylon 1857. 6d purple-brown. Very fine used, good margins just touched at top left CAT £450. £90



**134**

SG 3 Ceylon 1857-59. 2d green. A fine fresh mounted mint marginal example CAT £250. £120



**135**

SG 3a Ceylon 1857-59. 2d yellowish-green. Very fine used. 4 margins CAT £90. £45



**136**

SG 8 Ceylon 1857-59. 9d purple-brown. Very fine used. 4 very close to large margins CAT £1000. £325



**137**

SG 9 Ceylon 1857-59. 10d dull vermilion. Very fine used. 4 good/fine margins CAT £425. £240



**138**

SG 10 Ceylon 1857-59. 1/- slate-violet. Very fine used. 4 margins CAT £225. £75



**139**

SG 121-132 Ceylon 1872-80. 2c-96c. Fresh mint/unused without gum examples. 4c, 16c, 32c, 48c & 64c no gum others mounted mint CAT £1400. £275



**140**

SG 175 Ceylon 1885. 1r.12 on 2r.50 dull rose, perf 12½. A fine fresh lightly mounted mint example CAT £750. £350





**141**

SG 193 Ceylon 1885. 1r.12 on 2r.50 rose corner marginal example. Hinged in margin, stamp unmounted. £65



**142**

SG 318 Ceylon 1912-25. 10r purple & black/red. Unmounted mint CAT £75. £60



**143**

SG 319 Ceylon 1912-25. 20r black & red. A fine fresh lightly mounted mint example CAT £150. £75



**144**

SG 322s Ceylon 1912-28. \$500 dull green. A fine fresh lightly mounted mint example with good colour & well centred CAT £800. £675



**145**

SG 366 Ceylon 1927. 10r green & brown-orange. Fine unmounted mint CAT £80. £50



**146**

SG 40-49 Cyprus 1894-96. 1/2dpi-45pi overprinted specimen in black, 18pi in red, 1/2pi & 1pi toned gum, others fine mounted/lightly mounted mint CAT £350. £180



**147**

SG 148-150 Cyprus 1937 Coronation set perf specimen. Pristine unmounted mint CAT £225. £130



**148**

SG 100-101 Cyprus 1921-25. 10/- & £1 overprinted specimen. Lightly mounted mint. Scarce set CAT £750. £475



**149**

SG 100-101 Cyprus 1921-23. 10/- & £1 overprinted specimen. Very lightly mounted mint. Scarce set CAT £750. £550



**150**

SG 102 Cyprus 1924-28. £1 purple & black/red. A fine fresh very lightly mounted mint example CAT £300. £220



**151**

SG 164-165 Cyprus 1946 Victory set of 2 'Perf' specimen. Lightly mounted mint CAT £190. £75





**152**

SG 116 Cyprus 1924-28. 45pi purple & blue, overprinted specimen. Very lightly mounted mint. £35



**153**

SG 102 Cyprus 1924-28. £1 purple & black/red, overprinted specimen. Lightly mounted mint. £150



**154**

SG 117 Cyprus 1924-28. 90pi green & red/yellow, overprinted specimen. Very lightly mounted mint. £75



**155**

SG 36 Dominica 1903-07. 5/- black-brown. Very lightly mounted mint, good colour, well centred CAT £140. £90



**156**

SG 1s-14s East Africa & Uganda 1903. 1/2a-10r set of 14, overprinted specimen. Fine fresh mounted mint CAT £500. £350



**157**

SG 14 East Africa & Uganda 1903. 10r grey & ultramarine. A fine fresh lightly mounted mint example CAT £450. £275



**158**

SG 14 East Africa & Uganda 1903. 10r grey & ultramarine. A fine fresh lightly mounted mint example CAT £450. £275



**159**

SG 15s East Africa & Uganda 1903. 20r grey & stone, overprinted specimen. Lightly mounted mint. £140



**160**

SG 16s East Africa & Uganda 1903. 50r grey-green & red-brown. A fine fresh mounted mint example CAT £450. £275



**161**

SG 53-58 East Africa & Uganda 1912-21. 1r-10r overprinted specimen. Fresh mounted mint examples. £190



**162**

SG 58 East Africa & Uganda 1912-21. 10r red & green/green. A fine fresh very lightly mounted mint example CAT £250. £170



**163**

SG 59 East Africa & Uganda 1912-21. 20r black & purple. A fine fresh very lightly mounted mint example CAT £475. £275





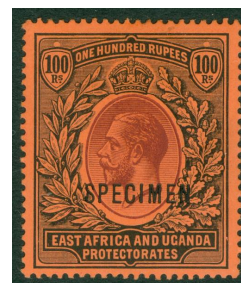
**164**

SG 60 East Africa & Uganda 1912-21. 20r purple & blue/blue. A fine fresh lightly mounted mint example CAT £600. £375



**165**

SG 61 East Africa & Uganda 1912-21. 50r dull rose-red & dull greyish-green. A fine fresh mounted mint example CAT £300. £175



**166**

SG 62s East Africa & Uganda 100 purple & black/red, overprinted specimen. A lightly mounted mint, well centred example CAT £750. £575



**167**

SG 74 East Africa & Uganda 1921. 5r blue & dull purple, overprinted specimen. Lightly mounted mint. £80



**168**

SG 60-69 Falklands 1912-20. 1/2d-£1 set of 11 overprinted specimen. Fine fresh lightly mounted mint examples CAT £1900. £975



**169**

SG 66 Falklands 1912-20. 3/- slate-green. Very fine used with a Falkland CDS, 5<sup>th</sup> Sept 1919. £75



**170**

SG 69 Falklands 1912-20. £1 black/red. Very fine used with a part Port Stanley CDS which leaves Kings profile clear CAT £650. £475



**171**

SG 136 Falklands 1933. 5/- black & yellow. A fine fresh lightly mounted mint example CAT £1000. £675





172

SG 136a Falklands 1933. 5/- black & yellow-orange. A fine fresh lightly mounted mint example CAT £3250. RPS cert. £2200



173

SG 137 Falklands 1933. 10/- black & chestnut. A fine fresh marginal example, barely hinged CAT £900. RPS cert. £675



174

SG B1s-B8s Falklands 1944. 1/2d to 1/- overprinted perf specimen 'horseshoe' set of 8. Fine unmounted mint CAT £650. Scarce. £475



175

SG 104-114 Fiji 1903. 1/2d-£1 set of 11, overprinted specimen. Mounted mint CAT £350. £170



176

SG 104-114 Fiji 1903. 1/2d-£1 set of 11. Lightly mounted mint CAT £475. £325



177

SG 109 & 111 Grenada 1916. 1d War tax stamps, overprinted specimen. Unmounted/lightly mounted examples CAT £80. £45



178

SG 1 Gambia 1869-72. 4d brown, no watermark. Lightly mounted mint. 4 fine margins CAT £600. RPS cert. £240



179

SG 5 Gambia 1869. 5d brown. Fine mounted mint. 4 good to large margins CAT £400. £150



180

SG 7 Gambia 1874. 6d deep blue. Lightly mounted mint. 4 large margins CAT £350. £220





181

SG 8-14 Gibraltar 1886-87. ½d to 1/- set of 7. Fresh lightly mounted mint examples CAT £600. £350



182

SG 112-134s Grenada 1921-34. ½d to 10/- set of 23, overprinted specimen. Fine fresh mounted mint CAT £450. £325



183

SG 135-144 Grenada 1934. ½d to 5/- set of 10 'Perf' specimen. Fine fresh mounted mint examples CAT £200. £130



184

SG 149-151 Grenada 1937 Coronation set 'Perf' specimen. Fine mounted mint CAT £110. £30



185

SG 1-7 Gilbert & Ellice Islands 1911. ½d to 1/- set of 7, overprinted specimen. Lightly mounted mint CAT £300. £220



186

SG 8-11 Gilbert & Ellice Islands 1911. ½d to 2½d set of 4, overprinted specimen. Fine unmounted mint CAT £180. £150





**187**

SG 27-35 Gilbert & Ellice Islands 1922-27. 1/2d to 10/- . Lightly mounted mint CAT £275. £170



**188**

SG 13 India 1854. 1a deep red. Fresh mint without gum. 4 margins CAT £475. £150



**189**

SG 37 India 1856-64. 1/2a blue. Unmounted mint CAT £170. £120



**190**

SG 186 India 1911-23. 1r brown & green. Lightly mounted mint CAT £50. £15



**191**

SG 188 India 1911-23. 5r ultramarine & violet. A fine fresh mounted mint example CAT £95. £30



**192**

SG 189 India 1911-23. 10r green & scarlet. A fine fresh lightly mounted mint example CAT £180. £65



**193**

SG 190 India 1911-23. 15r blue & olive. A fine fresh very lightly mounted mint example CAT £325. £130



**194**

SG 191 India 1911-23. 25r orange & blue. A fine fresh mounted mint example CAT £600. £175



**195**

SG 216w India 1926-33. 5r ultramarine & purple, watermark inverted. Very lightly mounted mint CAT £120. £50



**196**

SG 217w India 1926-33. 10r green & scarlet, watermark inverted. A fine fresh lightly mounted mint example CAT £300. £120



**197**

SG 219 India 1926-33. 25 orange & blue. A fine fresh very lightly mounted mint example CAT £325. £150



**198**

SG 59 KUT 1912-22. 20r black & purple/red. Very lightly mounted mint, good colours & well centred CAT £500. £375



**199**

SG 60 KUT 1912-22. 20r purple & blue/blue. Mounted mint CAT £600. £230



**200**

SG 61 KUT 1912-21. 50r dull rose-red. A fine fresh mounted mint example. Good colour & well centred CAT £900. David Brandon cert. £475





**201**

SG 62s KUT 1912-21. 100r purple & black, overprinted specimen. Very lightly mounted mint. Scarce. £675



**202**

SG 63s KUT 1912-21. 500r green & red/green, overprinted specimen. A pristine very lightly mounted mint example. Good colour & well centred. £1275



**203**

SG 103 KUT 1922-27. £50 black & brown bottom marginal example without gum, overprinted specimen in violet (Used for presentation sets). Lightly toned CAT £3250. £675



**205**

SG 1-3 Mafeking. Very fine used on small piece CAT £290. £130



**206**

SG 1 Mafeking 1900. 1d on 1/2d green. Fine used CAT £95. £30



**207**

SG 2 Mafeking 1900. 1d on 1/2d green. Very fine used, small reverse thin CAT £120. £15



**208**

SG 4 Mafeking 1900. 6d on 3d magenta. Fine used CAT £500. £175



**209**

SG 6 Mafeking 1900. 1d on 1 1/2d vermilion. A fine fresh lightly mounted mint example CAT £350. £180



**210**

SG 8 Mafeking 1900. 6d on 2d green & carmine. Very fine used on small piece CAT £150. £80



**211**

SG 11 Mafeking 1900. 1/- on 4d green & purple-brown. Very fine used on small piece CAT £130. £70



**212**

SG 12 Mafeking 1900. 3d on 1d lilac. Very fine used on small piece CAT £120. £65



**213**

SG 14 Mafeking 1900. 1/- on 6d purple rose-red. Very fine used on small piece CAT £190. £110



**214**

SG 33 Montserrat 1904. 5/- black & red. Very lightly mounted mint CAT £160. £90



**215**

SG 47 Montserrat 5/- red & green/yellow. A fine fresh unmounted mint example CAT £80. £65 20





216

SG 49-59 Montserrat 1916-22. 1/4d to 5/-. Fine unmounted mint set of 11 CAT £150. £110



217

SG 63-83 Montserrat 1922-29. 1/4 to 5/- set of 21. Unmounted mint CAT £120. £85



218

SG 84-93 Montserrat 1932. 1/4d to 5/- set of 10. Fine unmounted mint CAT £180. £130



219

SG 20 Nigeria 1893. 1/2d in violet (type 7) on 2d grey-green & carmine with variety 'No Y' on 'penny' & large part of fraction bar missing. Very fine used CAT £275. £220



220

SG 32 Nigeria 1893. 1/2d blue (type 9) on 2 1/2d purple on blue. Very fine used CAT £400. £275



221

SG 34s-45s Nigeria 1936. 1/2d-£1 set of 12 'Perf' specimen. Fine fresh mounted mint. Scarce CAT £325. £220



222

SG 40-52 Northern Nigeria 1912. 1/2d-£1 set of 13, overprinted specimen. Fine fresh mounted/lightly mounted mint CAT £250. £170





**223**

SG 81s Nyasaland 1908-11. £1 purple & black/red, overprinted specimen. A fine fresh mounted mint example. £170



**224**

SG 82 Nyasaland 1908-11. £10 purple & ultra-marine, overprinted specimen. A fine fresh mounted mint example CAT £1100. £425



**225**

SG 99s Nyasaland 1913. £10 purple & dull ultramarine, overprinted specimen. Fine mounted mint CAT £850. £575



**226**

SG 127s-129s Nyasaland 1937. 1/2d, 1d & 2d set of 3 'perf' specimen. Fine mounted mint CAT £150. £65



**227**

SG 22-24 Northern Rhodesia 1937 set of 3 perf 'horseshoe' specimen. Pristine unmounted mint. Scarce CAT £180. £130



**228**

New Zealand 1931-40 Post fiscal stamps values to £1. Fresh lightly mounted mint examples CAT £480. £180



**229**

SG 160 Rhodesia 1910-13. 5/- scarlet & pale yellow/green. Very fine used CAT £200. £130



**230**

SG 160b Rhodesia 7/6 carmine & pale blue. Mounted mint. A very fresh, well centred example CAT £550. £325



**231**

SG 165a Rhodesia £1 carmine-red & bluish-slate. Very lightly mounted mint marginal example CAT £1900. £975



**232**

Rhodesia 1913-24. 1/2d-£1 basic set of 19, overprinted specimen (types w2 & w3) 1/2d-£1. Condition mixed, 1 1/2d toned gum, 1d few short perfs, 4d crease, 10/- light gum bend. A scarce set, seldom seen CAT £3000. £1650





**233**

SG 53-54 St Helena 1902. 1/2d & 1d overprinted specimen.  
Fresh lightly mounted mint examples CAT £100. £45



**234**

SG 64s-70s St Helena 1908-11. 2 1/2d to 10/- overprinted specimen set of 4. Fine fresh mounted mint CAT £300. £160



**235**

SG 72-81 St Helena 1912-16. 1/2d to 3/- set of 10, overprinted specimen. Fresh mounted mint CAT £375. £190



**236**

SG 83-86 St Helena 1912. 4d & 6d watermark mult crown & crown, overprinted specimen. fresh mounted mint CAT £280. £120



**237**

SG 87 St Helena 1916. 1d War Tax overprinted specimen. Fine mounted mint CAT £70. £35



**238**

SG 88s St Helena 1919 1d War Tax overprinted specimen. Fine mounted mint CAT £70. £35



**239**

SG 96 St Helena 1922-37. £1 grey & purple-red. A fine unmounted mint example CAT £450. £390



**240**

SG 124-127 St Helena 1935 Silver wedding, overprinted 'per' specimen. Lightly mounted mint CAT £190. £75



**241**

SG 128-130 St Helena 1937 set of 3, overprinted specimen 'per'. Lightly mounted mint CAT £160. £75



**242**

SG 141-143 St Helena 1946 set of 2 'per' specimen. Lightly mounted mint CAT £150. £50





243

SG 99-111 Sierra Leone 1907-1912. 1/2d-£1 set of 13, overprinted specimen. Fine fresh mounted mint examples CAT £400. £220



244

SG 112-128 Sierra Leone 1912-21. 1/2d-£1 set of 17. Fine fresh mounted mint examples CAT £550. £350



245

SG 131-146 Sierra Leone 1921-27. 1/2d to 10/- overprinted specimen set of 16. 1/2d damaged, others lightly mounted mint CAT £500. £320



246

SG 181-184 Sierra Leone 1935 Silver wedding set 'perf' specimen. Unmounted mint CAT £150. £110



247

SG 147 South Africa 1903-04. 5/- blue & brown. A fine fresh very lightly mounted mint example CAT £170. £110



248

SG 20 Southern Nigeria 1903-04. £1 green & violet. Very lightly mounted mint CAT £475. £325





249

SG 61 Tanganyika G.E.A. 1917-21. 20r black & purple/red, overprinted specimen. Lightly mounted mint. £240



250

SG 74-88 Tanganyika 1922-24. 5c-£1 overprinted specimen set of 15. Lightly mounted mint CAT £900. £575



251

SG 88 Tanganyika 1922-24. £1 yellow-orange, watermark sideways. Very fine used with a registered CDS CAT £1000. £450



252

SG 88a Tanganyika 1922-24. £1 yellow-orange with upright watermark. A fine mounted mint example CAT £450. £275



253

SG 93-107 Tanganyika 1927-31. 5c-£1 set of 16, overprinted specimen. Fine fresh mounted mint examples CAT £450. £325



254

SG 107 Tanganyika 1927-31. £1 brown-orange. A fine fresh mounted mint example CAT £275. £150



255

SG 107 Tanganyika 1927-31. £1 brown-orange. Very fine used with a Mombassa CDS CAT £550. £375





**256**

SG 310s-322s Zanzibar 1936 set of 13, perforated, specimen type D20. Fine mounted mint CAT £275. £190



**257**

SG 11 Zululand 1888-93. 5/- rose. A fresh mounted mint example with good colour & centring CAT £750. £425







Ebay/hipstamp- steveal len777

Website-  
[www.stevenallenstamps.com](http://www.stevenallenstamps.com)

Email : Steveal len-orders@live.co.uk  
Overseas Tel : +44(0)2392 253 133

Cheques made payable to British & Colonial Stamps LTD

British & Colonial Stamps Ltd.  
Cutlers Farm Barn  
Newlands Lane  
waterlooville  
PO7 6TN

Barclays ,  
81a London Road,  
Waterlooville, PO7 7ER  
IBAN: GB53 BARC 2069 3423 7460 54  
SWIFT IBAN BIC: BARCGB22  
ACCOUNT NUMBER: 23746054  
BRANCH SORT CODE: 20-69-34

**PayPal**

