

BRITISH AND COLONIAL STAMPS

JULY COMMONWEALTH PART ONE



299

10% DISCOUNT ON ORDERS OVER £100
15% DISCOUNT ON ORDERS OVER £500

EMAIL; STEVEALLEN-ORDERS@LIVE.CO.UK
TEL; 02392 253 133



1

SG 9 Antigua 1863-67. 6d dark green, watermark small star perf 14-16. Fine mounted mint. 1989 Philatelic foundation cert CAT £750. £375



2

SG 29 Antigua 1884-87. 6d deep green. Very fine used Antigua CDS, Jan 10th 1888 CAT £120. £50



3

SG 30 Antigua 1884-86. 1/- mauve, watermark crown CA. Fine used part Antigua CDS CAT £140. RPS cert. £70



4

SG 40a Antigua 1903-07. 5/- grey-green & violet, chalky paper with plate number in margin. Fine unmounted mint. £200



5

SG 51 Antigua 1913. 5/- grey-green & violet. Very fine used St Johns, Antigua CDS, July 25th 1922 CAT £150. £95



6

SG 55-61 Antigua 1921. 3d-£1 set of 7. Fine mounted mint CAT £300. £150



7

SG 55s-61s Antigua 1921-29. 3d-£1 overprinted specimen set of 7. Fine mounted mint. £180



8

SG 61 Antigua 1918. £1 purple & black/red. A fine unmounted mint example CAT £275. £240



9

SG 1-8 Ascension 1922. 1/2d to 1/- set of 9 values. Lightly mounted mint CAT £325. £220



10

SG 1-8 Ascension 1922 set of 9. ½d to 3/- Superb used CAT £475. £380



11

SG 11c Ascension 1924. 1d grey-green & deep blue-green, variety cleft rock. Very fine used CAT £275. £130



12

SG 14c Ascension 1924-33. 3d blue, watermark mult script CA variety cleft rock. Very fine used Ascension red oval CAT £275. £140



13

SG 16c Ascension 1924-33. 6d grey, black & bright purple with variety 'cleft rock'. Lightly mounted mint CAT £650. £375



14

SG 18c Ascension 1/- grey, black & brown lower marginal example, variety cleft rock CAT £375. £320



15

SG 10 South Australia 1856-58. 6d slate blue. Fine used. 4 fine margins CAT £200. £90



16

SG 111 Australia 1929-30. 5/- grey & yellow. Very lightly mounted mint. Well centred for this issue CAT £250. £170



17

SG 112 Australia 1929-30. 10/- grey & pink. A pristine very lightly mounted mint example with good centring CAT £475. £375



18

SG 138 Australia 1931-36. £2 black & rose, die 1, watermark type 15, perf 12. Very fine used CAT £600. RPS cert. £475



19

SG 223-224d Australia 1948 set of 7 value.

Fine unmounted mint CAT £140. £85



20

SG 1 Bahamas 1859. 1d reddish-lake, no watermark, on thick opaque paper. Very fine used. 4 margins. Scarce CAT £1500. £775



21

SG 4 Bahamas 1861. 1d lake, no watermark, rough perf 14-16. Lightly mounted mint CAT £650. BPA cert. £325



22

SG 6 Bahamas 1861. 6d grey-lilac, rough perf 14-16. Very fine used CAT £500. BPA cert. £375



23

SG 11 Bahamas 6d lavender-grey 1862 perf 11½ x12, no watermark. Very fine used CAT £500. £325



24

SG 19a Bahamas 1862. 6d lilac, perf 14. Very fine used CAT £450. £250



25

SG 89s Bahamas 1912-19. £1 dull green & black, overprinted specimen. Very lightly mounted mint. £175



26

SG 70 Bahamas 1902. £1 green & black. A fine mounted mint example CAT £300. £175



27

SG 89 Bahamas 1912-19. £1 green & black. Fine mounted mint CAT £200. £120



28

SG 47 2d deep blue plate 15, overprinted specimen. Lightly mounted mint CAT £250. £130



29

SG 125 Bahamas 1921. £1 green & black. Lightly mounted mint CAT £180. £120



30

SG 3 Barbados 1852-55 (1d) blue. Fresh mint block of 9. 5 stamps unmounted. Full margins CAT £540+. £375



31

SG 5c Barbados 1852 (no value) deep slate. Very lightly mounted mint. 4 fine margins CAT £250. £175



32

SG 103 Barbados 1882-86. 5/- bistre. A pristine very lightly mounted mint example CAT £170. £120



33

SG 104b Barbados 1892 'half-penny' (type 5) on 4d deep brown with 'surcharge double' in both red & black. Pristine lightly mounted mint. Scarce so fine. David Brandon cert CAT £900. £675



34

SG 1-10 Basutoland 1933. 1/2d to 10/- set of 10. Very lightly mounted mint CAT £325. £225



35

SG 18 Bechuanaland 1888. 5/- green & black. Very fine used CAT £180. £120



36

SG 83 Bechuanaland 1913-24. 2/6 deep sepia brown. Fine mounted mint. Good colour & well centred CAT £140. £75



37

SG 84 Bechuanaland 1913-24. 5/- rose-carmine. A very fresh example being very lightly mounted, well centred & lovely deep colour CAT £160. £120



38

SG 89 Bechuanaland 1918. 5/- rose-carmine. Lightly mounted mint CAT £110. £70



39

SG 99-110 Bechuanaland 1932. 1/2d to 10/- set of 12. Fine, fresh mounted mint CAT £500. £290



40

SG 118-128 Bechuanaland 1938. 1/2 to 10/- set of 11. Pristine unmounted mint. £95



41

Bechuanaland Revenue 1896 'Tati concessions Limited' revenue set of 6 to £5. Lightly mounted mint. Scarce. £725



42

Bermuda 1910-34. 1d plate 111 imperforate plate proof block of 4 in carmine (pos 58-71) on ungummed, unwatermarked paper. From 1 sheet of 120 known to exist. Very fine with full margins. £875



43

SG 1 Bermuda 1865-1903. 1d rose-red, watermark CC. A pristine unmounted mint example CAT £100+. £90



44

SG 6 Bermuda 6d dull purple. Very fine used, lightest of cancels CAT £75. £20



45

SG 16 (Scott 14) Bermuda 1875. 1d on 3d buff. Fine used. FEC cert (Friedl expert committee) CAT £350. £130



46

SG 17 Bermuda 1875. 1d on 1/- green. Fine mounted mint CAT £500. David Brandon cert. £220



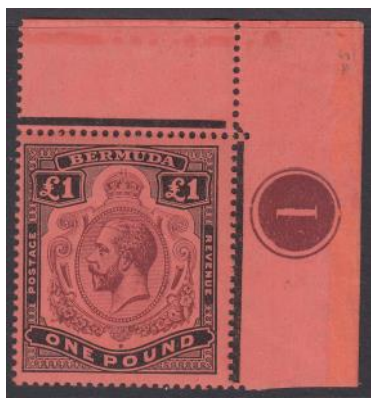
47

SG 54 Bermuda 1918-22. 10/- green & carmine/pale bluish-green. Fine unmounted mint CAT £160. £130



48

SG 55 Bermuda 1918-23. £1 purple & black/red. A fine fresh unmounted mint example CAT £250. £220



49

SG 55a Bermuda 1918-22. £1 purple & black on red. Unmounted corner marginal plate No1 example from the top right of the sheet with break in scroll variety. £575



50

SG 121d Bermuda 1938-55. £1 violet & black/scarlet, perf 13. Fine unmounted mint CAT £55. £35



51

SG 26 British Central Africa 1895. 2/6 black & bright magenta. Very fine used CAT £375. £290



52

SG 27 British Central Africa 1895. 3/- black & yellow. Very fine used CAT £75. £50



53

SG 37 British Central Africa 1896. 2/6 black & magenta. Very fine used. £120



54

SG 42s British Central Africa 1896. £25 black & green, watermark CC, overprinted specimen. A fine lightly mounted mint example. £525



55

SG 49 British Central Africa 1897-1900. 3/- black & sea green. Mounted mint CAT £350. £120



56

SG 64 British Central Africa 1903-04. 4/- dull & bright purple. Pristine unmounted mint. £45



57

SG 19 British East Africa 1890-95. 5r grey-green. Very fine used CAT £80. £45



58

SG 27 British East Africa 1894. 5a on 8a blue. Superb used with a Mombasa CDS. £75



59

SG 36b British East Africa 1895. 2½d black/pale buff. Very fine used CAT £3000. Scarce. £875



60

SG 44 British East Africa 1895. 2r brick-red. A fine fresh mounted mint example CAT £550. £350



61

SG 55b British East Africa 1895. 4a slate-green. Very fine used. £25



62

SG 95-97 British East Africa 1897-1903.
4r, 5r 10r, overprinted specimen. Fresh
mounted mint examples. £130



63

SG 99s British East Africa 1897. 50r
mauve. A fine fresh mounted mint exam-
ple with good colour & centring. £350



64

SG 19 British Guiana 4c blue. Very fine
used, cancelled by part Berbice double-arc
CDS, 30th July 1858. 4 large margins. A
lovely example. BPA cert. £750



65

SG 20 British Guiana 1853-55. 4c pale
blue. Very fine used with a part Demerara
double-arc date stamp, 30th Oct 1856. 4
fine margins CAT £700. £525



66

SG 24 British Guiana 1856. 4c black/
magenta. Very fine used by an almost
complete Berbice CDS, Aug 29th 1856.
Cut in octagonal shape. Light reverse thin,
usual minor surface abrasions. Rare CAT
£25000. BPA cert. £7800



67

SG 116c, 117d & 118c British Guiana 1862. 1c
black on rose paper, vertical strip of 3, types 10-
12. Unsigned with gum. From the remainder
sheet. Very scarce multiple. RPS cert. £2600



68

SG 122d British Guiana 1862 type-set 5ct
black on blue paper, border type 13,
signed R2/4 variety ornament omitted at
right. Mint without gum. Unpriced, in
mint condition. Ex Casparay collection.
BPA cert. rare. £4800



69

SG 206 British Guiana 1889. 90c dull purple & rosine. Very fine used CAT £80. £45



70

SG 288-300 British Guiana 1934-40. 1c-\$1 set of 13. Fine unmounted mint CAT
£140. £110



71

SG 64 British Honduras 1891-1901. \$2 green & ultramarine. Very fine used with a Belize, Honduras CDS CAT £325. £240



72

SG 65 British Honduras 1891-1901. \$5 green & black. Lightly mounted mint CAT £350. £200



73

SG 93 British Honduras 1904-07. \$5 grey, green & black. A fine fresh mounted mint example CAT £375. £190



74

SG 101-110 British Honduras 1913-21. 1c-\$5 set of 10 + extra shade. Lightly mounted mint CAT £400. £240



75

SG 110 British Honduras 1913-21. \$5 purple & black/red. Unmounted mint CAT £275. £230



76

SG 125 British Honduras 1922-33. \$5 purple & black/red. A pristine very lightly mounted mint example CAT £225. £180



77

SG L1-L10 Levant 1905. 1/2d to 1/-. Fine mounted mint CAT £110. £60



78

SG 1-7 British Solomon Islands 1907. 1/2d to 1/-. Very fine used set of 7 CAT £300. £220



79

(SG 1-7) British Solomon Islands 1907. 1/2d to 1/- imperf proof set. Mounted mint on thick paper. All with full margins. £175



80

SG 1-7 British Solomon Islands 1907. ¼d to 1/- set of 7. Fine unmounted mint. £280



81

SG 8-17 British Solomon Islands 1908-11.
¼d to 5/- Very fine used set of 11 CAT
£225. £150



82

SG 38 British Solomon Islands 1914-23. £1
purple & black/red. A very fine used CDS
example. £95



83

SG 38 British Solomon Islands 1914-23. £1
purple & black/red. Fine unmounted mint.
£240



84

SG 38 British Solomon Islands 1914-23. £1
purple & black/red. Very lightly mounted
mint CAT £250. £190



85

SG 49 British Solomon Islands 1922-31. 2/-
purple & blue/blue. Very fine used part
CDS, leaves Kings profile clear CAT £55.
£30



86

SG 52 British Solomon Islands 1922-31. 10/-
green & red/emerald. A very fine used ex-
ample CAT £110. £70



87

SG 53-56 British Solomon Islands 1935 Sil-
ver Jubilee set. Very fine used CAT £45. £25



88

SG 1-10 Brunei 1895. ½c-\$1 set of 10 val-
ues. Superb used CAT £450. £350



89

SG 51-59 Brunei 1922. 1c-\$1. Very fine
used CDS set of 9 CAT £800+. £575



90

SG 58 Brunei 1922. 50c black/blue green.
Very fine used CAT £170. £120



91

SG O1-O14 Burma 1937 officials service set of 14. Fine lightly mounted mint CAT £950. £480



92

SG O13 Burma 1937. 5r ultramarine &
purple. Lightly mounted mint CAT £225.
£130



93

SG 13 Burma 1937. 1r chocolate & green.
Lightly mounted mint CAT £70. £40



94

SG O14 Burma 1937. 10r green & scarlet. A
fine fresh lightly mounted mint example
CAT £650. £420



95

SG 16 Burma 1937. 10r green & scarlet. A fine fresh unmounted mint example CAT £275. £240



96

SG 17 Burma 1937. 15r blue & olive. A fine fresh mounted mint example CAT £800. £375



97

SG 18 Burma 1937. 25r orange & blue. Very lightly mounted mint CAT £1700. £850



98

SG 1a Bushire 1915. 1ch orange & green. No stop variety. Fine mounted mint CAT £325. £240



99

SG 3a Bushire 1915. 3ch green & grey, variety no stop. Lightly mounted mint CAT £425. £375



100

SG 11a Bushire 1915 (Aug) 2kr claret & green, no stop variety. Very fine used. RPS cert (1920 doesn't mention the no stop variety). Very scarce. £975



101

Canada: New Brunswick: 1851-60 pence issues, cover, 12 bar cancellation 1856 wrapper to Moncton franked 3d, clear to large margins by grid barred oval, back stamp fine blue Chatham June 11 dispatch and next day Bend of Petitcodiac River date stamps, horizontal cover filing fold. £275



102

SG D1-D8 Canada 1906. 1c to 10c Postage due set. Very fine used CAT £90. £40



103

SG D9-D13 Canada 1930-32. 1c to 10c. Lightly mounted mint CAT £100. £35



104

SG 15 Canada 1852-57. 10d blue. Very fine used. 4 fine margins CAT £1800. £875



105

SG 22 Canada, British Columbia 1865. 3d pale blue. Very fine used CAT £110. £45



106

SG 28 Canada, British Columbia 1868-71. 2c brown, watermark CC. Very fine used CAT £140. £90



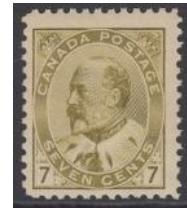
107

SG 29 Canada, British Columbia 1868-71. 5c pale red, watermark CC. Very fine used CAT £180. £130



108

SG 31 Canada, British Columbia 1868-71. 25c yellow, watermark CC. Very fine used CAT £180. £130



109

SG 180 Canada 1903. 7 cent yellow-olive. A fine unmounted mint example CAT £90. £60



110

SG 312 Canada 1931. 10c olive-green pair, variety-imperforate. Lightly mounted mint. RPS cert. £175



111

SG 319-25 Canada 1932-33. 1c-13c set of 7. Fine mounted mint CAT £170. £50



112

Canada 1851-64. 6d plate proof trial colour proof in grey on un-gummed India paper. Vertical 'specimen' overprint in orange/yellow. 4 good to large margins. £150



113

SG 6a Cape of Good Hope 1855-63. 4d blue pair. Fresh mint without gum. Full margins CAT £2200. £375



114

SG 6a Cape of Good Hope 1855-63. 4d blue. Fine mounted mint. Good to large margins CAT £1100. RPS cert. £425



115

SG 78 Cape of Good Hope 1902-04. 5/- brown. Pristine unmounted mint CAT £160. £130



116

SG 1-2 Cayman Islands 1900. 1/2d & 1d overprinted specimen set of 2. Very lightly mounted mint. Scarce CAT £170. £130



117

SG 3-7 Cayman Islands 1902. 1/2d to 1/- set of 5. Very lightly mounted mint CAT £110. £65



118

SG 3-7 Cayman Islands 1902-03. 1/2d to 1/- set of 5, overprinted specimen. Fine fresh mounted mint. £140



119

SG 13-16 Cayman Islands 1907. 4d to 5/- overprinted specimen. Fine fresh lightly mounted mint examples CAT £225. £140



120

SG 18 Cayman Islands 1907. 1d on 5/- salmon & green. A fine fresh lightly mounted mint example CAT £300. £190



121

SG 19 Cayman Islands 1907. 1d on 5/- salmon & green. Very lightly mounted mint CAT £275. £190



122

SG 84-95 Cayman Islands 1932 Centenary set of 12. Fine fresh mounted mint CAT £500. £325



123

SG 2 Ceylon 1860. 1d milky blue, showing plate wear. Very fine used. 4 margins. £75



124

SG 2a Ceylon 1857-59. 1d blue. Very fine used. 4 good to large margins. £60



125

SG 3 Ceylon 1857-59. 2d green. Fine used pair. Full margins, just clear to large. £65



126

SG 3 Ceylon 1857-59. 3d green. Very fine used. 4 good margins. £45



127

SG 3a Ceylon 1857-59. 2d yellow-green. Very fine used. 4 margins. £50



128

SG 3 Ceylon 1857-59. 2d green strip of 3. Very fine used, good margins touched in places. £110



129

SG 3a Ceylon 1857-59. 2d yellow-green. Very fine used. 4 good to large margins. £65



130

SG 6b Ceylon 1857-59. 6d deep brown, used with a barred cancellation. 4 close to large margins CAT £1000. RPS cert. £275



131

SG 9 Ceylon 1857. 10d dull vermilion. Very fine used. 4 fine margins CAT £300. £130



132

SG 10 Ceylon 1857-59. 1/- slate-violet. Very fine used. 4 fine margins CAT £200. £130



133

SG 10 Ceylon 1857. 1/- slate-violet imperf watermark star. Scarce pair. Very fine used, good margins just touched at lower left side. RPS cert. £325



134

SG 26 Ceylon 1861. 1/- slate-violet, watermark large star. Intermediate perforation 14-15½ mint block of 4. Mount at top, lower 2 stamps unmounted. A scarce multiple. £525



135

SG 152s Ceylon 1883-98. 24 cent, brown-purple, overprinted specimen. mounted mint, gum lightly toned. Rare. Only 100 exist. £425



136

SG 256-64s Ceylon 1899-1900. 2c-2r.25 set of 9, watermark crown CA/CC, overprinted specimen. Fine mounted mint, 12c value has a crease. £150



137

SG 292-300s Ceylon 1910. 2c-10r overprinted specimen set of 9. Fine fresh mounted mint examples CAT £325. Scarce. £240



138

SG 320 Ceylon 1912-25. 50r dull purple, overprinted specimen. A fine scarce unmounted mint example. £275



139

SG 321 Ceylon 1912-25. 100r grey/black, overprinted specimen. A fine scarce unmounted mint example. £525



140

SG 322 Ceylon 1912-25. 500r dull green, overprinted specimen. Fine mounted mint. Scarce. £575



141

SG 363-367s Ceylon 1927-29 set of 5, overprinted specimen with all values, less 20r being unmounted. Very fine & fresh. £375



142

SG F1 Ceylon 1952. 10r green & yellow-orange. Lightly mounted mint marginal example CAT £100. £45



143

Ceylon Revenue 1938. 100r purple & blue. Very fine used. £220



144

SG T22 Ceylon 1882. 25c lilac Fiscal stamp. Inscribed 'stamp duty'. A mint example, small closed tear and scuff on right side. Uncatalogued by Gibbons. Scarce. £375



145

SG O7 Ceylon 3d carmine-rose. Mounted mint CAT £150. £30



146

SG O17b Ceylon 1r.12c dull rose. Very fine used CAT £65. £35



147

SG 1-4 Cook Islands 1882. 1d to 10d set of 4. Fine mounted mint CAT £250. £140



148

SG 95-98 Cook Islands 1931. 2/6, 5/-, 10/- & £1. Lightly mounted mint CAT £208. £120



149

SG 136w Cook Islands 1943-54. \$5 indigo-blue. Inverted watermark. Fine mounted mint CAT £275. £150



150

SG 4 Cyprus 1880. 4d sage-green (plate 16). Very fine used part CDS cancel CAT £250. £130



151

SG 8 Cyprus 1881. 1/2d on 1d red plate 216 (type 4) surcharge. Fine mounted mint CAT £400. David Brandon cert. £240



152

SG 9aa Cyprus 1881 'half-penny' type 5 (13mm) on 1d red plate 205, variety surcharged double. Fine mounted mint. Scarce CAT £800. £450



153

SG 9ab Cyprus 1881 'half-penny' type 5 (13mm) on 1d red plate 215 variety surcharge double. Fine mounted mint, well centred CAT £450. £240



154

SG 15 Cyprus 1881. 6pi olive-grey, watermark CC. Fine used CAT £475. Scarce. RPS cert. £320



155

SG 31-37 Cyprus 1882-94. 1/2pi-12pi set of 7. Very lightly mounted mint CAT £450. £320



156

SG 36 Cyprus 1882-94. 6pi olive-grey. A very fine used CDS example. Well centred, full perfs CAT £750. £220



157

SG 40s-49s Cyprus 1894-96. 1/2pi-45pi watermark crown CA. A fine fresh mounted mint set of 10 CAT £350. £275



158

SG 40-49 Cyprus 1894-96. 1/2pi-45pi. A fine fresh lightly mounted mint set of 10 CAT £250. £175



159

SG 49 Cyprus 1894. 45pi grey-blue & blue.
Very fine used with a Larnaca, Cyprus CDS
CAT £160. £95



160

SG 123-32 Cyprus 1928 British Rule set of 10.
1/4-£1. Very fine used CAT £450. £320



161

SG 123-32 Cyprus 1928 British Rule set of 10. Fine unmounted mint CAT £300. £275



162

SG 133-143 Cyprus 1934. 1/4pi-45pi. Mounted mint set of 11 values CAT £200. £85



163

SG 133-143 Cyprus 1934. ¼pi-45pi. Very fine used set of 11 CAT £170. £125



164

SG 88 Dominica 1923-33. 5/- black & green/yellow. Very fine used part CDS, leaves Kings profile clear. £45



165

SG 91 Dominica 1923-33. £1 black & purple/red, overprinted specimen. Pristine unmounted mint. £275



166

SG 31 East Africa & Uganda 1904-07. 10/- grey & ultramarine. A fine fresh mounted mint example with good deep colour & well centred CAT £375. £240



167

SG 59 East Africa & Uganda 1912-21. 20/- black & purple/red. A pristine very lightly mounted mint example CAT £475. £375



168

SG 9y Falklands 1855. 4d pale grey-black with watermark crown right of CA & reversed. Fine mounted mint. Stephen Heijtz cert CAT £900. £475



169

SG 38 Falklands 1906. 1/- yellow-brown. A fine fresh unmounted mint example. £70



170

SG 41 Falklands 1898. 2/6 deep blue. Lightly mounted mint CAT £275. £190



171

SG 41 Falklands 1898. 2/6 deep blue. Very fine used with Falklands CDS. Good deep colour & well centred CAT £275. £220



172

SG 42 Falklands 1898. 5/- red. Lightly mounted mint. Good colour & well centred CAT £250. £170



173

SG 66 Falklands 1912-20. 3/- slate-green. Very fine used with a Falkland CDS, 5th Sept 1919. £75



174

SG 67 Falklands 1912-20. 5/- deep rose-red. Very fine used part Falklands CDS, leaves Kings profile clear. £110



175

SG 67 Falklands 1912-20. 5/- deep rose-red. Lightly mounted mint, good deep colour & well centred. £85



176

SG 67b Falklands 1912-20. 5/- maroon. A fine fresh mounted mint example, well centred. Good colour CAT £130. £75



177

SG 68 Falklands 1912-20. 10/- red/green. A fine unmounted, well centred example CAT £190. £150



178

SG 69 Falklands 1912-20. £1 black on red. Fine unmounted mint. Good colour & well centred CAT £550. £475



179

SG 69 Falklands 1912-20. £1 black/red overprinted specimen. Fine mounted mint. £525



180

SG 80 Falklands 1921-28. 3/- slate-green. Lightly mounted mint CAT £100. £60



181

SG 116-26 Falklands Whales & Penguin set, including shades. Fine fresh mounted mint CAT £700+. £425



182

SG 124 Falklands 1929-37. 5/- green/yellow. Very fine used with a Falklands CDS CAT £110. £75



183

SG 135 Falklands 1933. 2/6 black & violet. A fine fresh unmounted mint example, well centred, good deep colour. £240



184

SG 160 Falklands 1938-50. 2/6 slate. A fine fresh unmounted marginal block of 4
CAT £240. £150



185

SG 161b Falklands 1938-50. 5/- indigo & pale yellow-brown. Very fine used part
CDS CAT £95. £55



186

SG 42 Fiji 1878-99. 4d on 2d pale mauve. A fine fresh unmounted mint block of 4 CAT
£360. £275



187

SG 57b Fiji 1878-99. 6d bright rose perf 11x11¼ block of 4. Very lightly mounted, 2 stamps being unmounted mint. Well centred, good colour CAT £300. £160



188

SG 124 Fiji 1906-12. £1 purple & black. Very fine used part CDS CAT £275. £190



189

SG 124 Fiji 1906-12. £1 purple & black/red. Fine unmounted mint. £325



190

SG 137a Fiji 1912-23. £1 purple & black, die 2. Very fine used part CDS, leaves Kings profile clear CAT £325. £275



191

SG 137 Fiji 1912-23. £1 purple & black/red. Unmounted mint CAT £275. £240



192

SG D6s-D10s Fiji ½d-4d Postage due set, overprinted specimen. Fine mounted mint
CAT £160. £95



193

SG 1 Gambia 1869-72. 4d brown, no watermark. Lightly mounted mint. 4 fine margins CAT £600. RPS cert. £240



194

SG 2 Gambia 1869. 4d pale brown. A fine fresh mint example without gum. 4 fine margins CAT £500. £130



195

SG 3 Gambia 1869. 3d deep blue. A fine fresh mounted mint example. 4 close margins CAT £550. £150



196

SG 3a Gambia 6d blue. Unused without gum. 4 fine margins. Some light soils CAT £600. David Brandon cert. £110



197

SG 4 Gambia 1869. 6d pale blue, no watermark. Imperf. Fine used red CDS cancel CAT £1100. £190



198

SG 5 Gambia 1869. 5d brown. Fine mounted mint. 4 good to large margins CAT £400. £150



199

SG 7 Gambia 1874. 6d deep blue. Lightly mounted mint. 4 large margins CAT £350. £220



200

SG 8 Gambia 1874. 6d blue. Fine mounted mint. 4 fine margins CAT £350. £140



201

SG 37-44 Gambia 1898-1902. Set of 8 values. ½d to 1/- . Fine mounted mint CAT £130. £75



202

SG 45-56 Gambia 1902. ½d to 3/- set of 12. Lightly mounted mint CAT £300. £190



203

SG 45-56 Gambia 1902-05. 1/2d to 3/- overprinted specimen. Most being mounted mint. £190



204

SG 45-56 Gambia 1902-05. 1/2d to 3/- set of 12. Very fine used CAT £375. £275



205

SG 70 Gambia 1906. 1d on 5/- carmine & yellow. Unmounted mint CAT £60 £45



206

SG 70 Gambia 1906. 1d on 3/- carmine & yellow, upper left corner plate block of 4. Very fine used with 2 oval registered date stamp. Scarce multiple. £150



207

SG 72-85 Gambia 1909 set of 14. 1/2d to 3/-.
Lightly mounted mint CAT £170. £110



208

SG 86-102 Gambia 1912-22. ½d to 5/- set of 17. Very fine used CAT £300. £220



209

SG 8-14 Gibraltar 1886-87. ½d to 1/- set of 7. Fresh lightly mounted mint example CAT £600. £350



210

SG 17/17b Gibraltar 1889. 25c on 2d brown-purple with small 'i' variety in pair with normal. Lightly mounted mint CAT £104. £60



211

SG 22-33 Gibraltar 1889-96 Spanish currency set of 12. 5c-5p. Very lightly mounted mint CAT £225. £160



212

SG 39-45 Gibraltar 1898. ½d to 1/- Sterling currency set of 7. Fine fresh unmounted mint CAT £190. £160



213

SG 49a Gibraltar 1903. 2½d dull purple & black/blue variety large 2 in '½'. Very fine used CAT £130. £50



214

SG 52 Gibraltar 1903. 2/- green & blue. Pristine very lightly mounted example CAT £200. £120



215

SG 53 Gibraltar 1903. 4/- dull purple & green. Very fine used, leaving Kings profile clear CAT £225. £170



216

SG 54 Gibraltar 1903. 8/- dull purple & black/blue. Very fine used, leaving Kings profile clear CAT £225. £170



217

SG 55 Gibraltar 1903. £1 dull purple & black, overprinted specimen. A fine mounted mint example. £275



218

SG 64 Gibraltar 1904-08. £1 deep purple & black/red. A pristine very lightly mounted mint example CAT £650. £420



219

SG 73 Gibraltar 1906-11. 4/- black & carmine. Lightly mounted mint CAT £170. £95



220

SG 74 Gibraltar 1906-11. 8/- purple & green, overprinted specimen. Fine mounted mint. £120



221

SG 76-85 Gibraltar 1912-24. 1/4d to £1 set of 10. Lightly mounted mint CAT £325. £240



222

SG 84 Gibraltar 1912-24. 8/- dull purple & green. A fine fresh mounted mint example CAT £100. £45



223

SG 85 Gibraltar 1912-24. £1 dull purple & black/red. A pristine very lightly mounted mint example CAT £140. £95



224

SG 85 Gibraltar 1912-24. £1 dull purple & black/red. Very fine used, part registered oval, leaves Kings profile clear CAT £275. £220



225

SG 89-101 Gibraltar 1921-27 Definitive set, watermark script. Includes shades. Lightly mounted mint CAT £400. £240



226

SG 90-101 Gibraltar 1921-27. 1d to 8/- watermark script. Pristine unmounted mint. £325



227

SG 101 Gibraltar 1921-27. 8/- dull purple & green. A pristine very lightly mounted mint example. Good colour & well centred CAT £325. £220



228

SG 102-107 Gibraltar 1925-32. 1/- to £1 changed colours. Fine unmounted mint CAT £250. £220



229

SG 107 Gibraltar 1925-32. £1 red, orange & black. A fine unmounted mint example
CAT £190. £150



230

SG 24 Gilbert & Ellice Islands 1912-24. £1 purple & black/red. Superb used, part CDS. Good colour, well centred. Scarce in this quality CAT £1600. RPS cert. £1275



231

SG 24 Gilbert & Ellice Islands 1912-24. £1 purple & black & red. A fine unmounted mint example CAT £550. £425



232

SG 35 Gilbert & Ellice Islands 1922-27. 10/- green & red, watermark script. Fine unmounted mint CAT £160. £130



233

SG 48 Gold Coast 1902. 20/- purple & black/red. A fine very lightly mounted mint example CAT £225. £180



234

SG D1-4 Gold Coast 1923. 1/2d to 3d Postage due set of 4. Fine unmounted mint
CAT £50. £40



235

SG 18028 Hong Kong (China) 1922-27. 1c-\$2 watermark script set of 11. Very lightly mounted mint CAT £425. £290



236

SG 51a Hong Kong 1891. 2c carmine variety (short 'J' in Jubilee). A fine fresh unmounted mint example CAT £800. £675



237

SG 51b Hong Kong 1891. 2c carmine variety (short 'u' in Jubilee). Very lightly mounted mint CAT £800. £375



238

SG 87a Hong Kong 1904-06. \$2 slate & scarlet, watermark MCA on chalky paper. Fine mounted mint CAT £350. £220



239

SG 91-99 Hong Kong 1907-11. 1c-£2 set of 9. Fine mounted mint CAT £650. £350



240

SG 115 Hong Kong 1912-21. \$5 green & red on green back, watermark MCA. A fine fresh very lightly mounted mint example CAT £725. £475



241

SG 115a Hong Kong 1912-21. \$5 green & red/green, white back. A fine lightly mounted mint example CAT £600. £325



242

242. SG 116 Hong Kong 1912-21. \$10 purple & black, watermark MCA. Lightly mounted mint CAT £600. £450



243

SG 132 Hong Kong 1921-37. \$5 green & red/emerald. Very lightly mounted mint CAT £500. £350



244

SG Z462 Hong Kong Treaty Ports Hankow 1891. 14c on 30c mauve. A fine fresh CDS example CAT £200. £130



245

SG 12 India 1854. 1a red. A very fine used example. 4 huge margins. £70



246

SG 14 India 1854. Very fine used '1' cancel (Bombay). 4 huge margins. £85



247

SG 138 India 2r carmine & yellow-brown. Pristine very lightly mounted mint CAT £110. £50



248

SG 188 India 1913. 5r ultramarine & violet. A fine fresh mounted mint example CAT £95. £50



249

SG 219 India 1926-33. 25r orange & blue. A pristine very lightly mounted mint example CAT £325. £240



250

SG 261 India 1937-40. 5r green & blue. Fine unmounted mint CAT £48. £30



251

SG 262 India 1937-40. 10r purple & scarlet. Fine unmounted mint CAT £38. £25



252

SG 263 India 1937-40. 15r brown & green. A pristine unmounted mint marginal example CAT £180. £120



253

SG 264 India 1937-40. 25r slate violet & purple. Fine unmounted mint CAT £300. £175



254

SG 305-308 India 1948 Gandhi set. Fine
used CAT £140. £65



255

SG O66-O68 Indian States Nabha service.
1r, 2r & 5r. Fine unmounted mint. £320



256

SG O66-O71 Indian States Chamba officials
set of 6. 1r-5r being very lightly mounted
CAT £400. £275



257

SG O72-O86 Indian States Chamba officials
1940-43 complete set. Fine fresh mounted
mint CAT £450. £320



258

SG O73-O86 Indian States Jind officials 1939-43 complete set. Low values mounted mint, high values
lightly mounted CAT £350. £250



259

SG 77-94 Indian States Nabha 1938 definitive set of 18.
3p-25r. lightly mounted mint CAT £750. £420



260

SG 95-98 Indian States Nabha 1941-45. 3p to 1a set of 4. Fine mounted mint CAT
£150. £75



261

SG 114 Indian state Gwalior 1928-36. 10r
green & scarlet. Fine unmounted mint. £100



262

SG 105-117 Indian States Gwalior 1938-48
set. All unmounted mint except 4a brown
which is mounted mint CAT £475. £375



263

SG 114 Indian States 1938-48. 5r green & blue. Fine unmounted mint. £30



264

SG 129-136 Indian States Gwalior 1949. 3p-8a. Lightly mounted mint CAT £350. £220



265

SG 83-85 Ireland 1925-28. 2/6 to 10/-. Very lightly mounted mint CAT £225. £130



266

SG 85 Ireland 1927-28. 10/- dull grey-blue. Fine mounted mint. good colour & centring CAT £150. £85



267

SG 88 Ireland 1927-28. 10/- dull grey-blue. Very fine used with a Maghchromtha Dorcaigh CDS. £240



268

SG 99-101 Ireland 1934. 2/6 to 10/- re-engraved set. 2/6 & 5/- unmounted, 10/- very lightly mounted CAT £400. £275



269

SG 102-104 Ireland 1937. 2/6, 5/- & 10/- set of 3. Lightly mounted
mint CAT £450. £240



270

SG 1-12 Kelantan 1911-15 set of 13 + extra shades. Fine mounted mint.
High values being very lightly mounted CAT £225+. £170



271

SG 30-38 Kelantan 1922 Borneo exhibition
set of 9. Fine mounted mint CAT £425. £220



272

SG 1-13 KUT 1903-04. 1/4-5r watermark crown CA/CC. Fine fresh mounted mint set of 13
CAT £650. £375



273

SG 13 KUT 1903-04. 5r grey & red. Mounted
mint, good colours CAT £170. £110



274

SG 14 KUT 1903-04. 10r grey & ultramarine.
Mounted mint, good colours CAT £450.
£250



275

SG 14a KUT 1903-04. 10r grey & ultramarine,
chalky paper. A fine fresh mounted
mint example CAT £600. £325



276

SG 15 KUT 1903-04. 50r grey & red-brown, watermark CC. Very lightly mounted mint. Faint gum bend CAT £1000. £425



277

SG 28 KUT 1904-07. 3r grey-green & black. Mounted mint, good colours CAT £110. £65



278

SG 29 KUT 1904-07. 4r grey & emerald-green. A fine mounted mint example. Good colour & well centred CAT £140. £90



279

SG 32 KUT 1904-07. 20r grey & stone. Mounted mint, good colour & well centred, corner crease at bottom left side CAT £850. £190



280

SG 58 KUT 1912-21. 10r red & green/green. A fine fresh mounted mint example CAT £250. £150



281

SG 59 KUT 1912-21. 20r black & purple. Very lightly mounted mint CAT £475. £375



282

SG 61s KUT 1912-21. 50r dull rose-red & dull grey, greyish-green, overprinted specimen. Lightly mounted mint. £240



283

SG 62 KUT 1912-21. 100r purple & black, overprinted specimen. A fine scarce unmounted mint example. Good colour & well centred. Scarce in this quality. £875



284

SG 62s KUT 1912-21. 100r purple & black, overprinted specimen. Very lightly mounted mint. Scarce. £675



285

SG 72 KUT 1921. 2r red & black/blue. A fine fresh unmounted mint example CAT £95. £75



286

SG 73 KUT 1921. 3r violet & green. A fine fresh unmounted mint example CAT £160. £130



287

SG 74 KUT 1921. 5r blue & dull purple. A fine fresh unmounted mint example CAT £200. £180



288

SG 95 KUT 1921-27. £1 black & orange. A fine fresh mounted mint example with good deep colour CAT £225. £130



289

SG 95s KUT 1922-27. £1 black & orange, overprinted specimen. A fine fresh lightly mounted mint example. Good colour & well centred. £275



290

SG 96 KUT 1922-29. £2 green & purple, overprinted specimen. A pristine very lightly mounted mint example. Well centred, good colours. Scarce in this quality. £475



291

SG 97 KUT 1922-27. £3 purple & yellow. Unmounted mint. Very fresh with good colour & centring CAT £1800. £1650



292

SG 97s KUT 1922-27. £3 purple & yellow, overprinted specimen. Very lightly mounted mint. Good colours & well centred. £525



293

SG 98 KUT 1922-29. £4 black & magenta, overprinted specimen. Very lightly mounted mint, good colours & centring. A lovely example. £675



294

SG 99s KUT 1922-27. £5 black & blue, overprinted specimen. A pristine very lightly mounted mint example with good deep colour & well centred. £950



295

SG 99s KUT 1922-27. £5 black & blue, overprinted specimen. Fine lightly mounted mint example. Well centred & good deep colour. £950



296

SG 100s KUT 1922-27. £10 black & green, overprinted specimen. A fine very lightly mounted mint example. Good colour & well centred. £1100



297

SG 101s KUT 1922-27. £20 red & green, overprinted specimen. Mounted mint, few short perfs. Good colour & well centred CAT £2000. £975



298

SG 102s KUT 1922-27. £25 black & red, overprinted specimen. A fine unmounted mint example. Good deep colour & well centred. £2400



299

SG 104s KUT 1922-27. £75 purple & grey, overprinted specimen. A pristine very lightly mounted mint example. Well centred, good colour. Scarce in this quality. £5500



300

SG 105s KUT 1922-27. £100 red & black, overprinted specimen. A fine fresh unmounted mint example. Good colours & well centred. Very scarce. £6500

EMAIL; STEVEALLEN-ORDERS@LIVE.CO.UK
TEL; 02392 253 133

SUBSCRIBE FOR FREE WITH YOUR EMAIL ADDRESS ON
WWW.STEVENALLENSTAMPS.COM TO GET ALL OUR MAILING
LISTS AND FUTURE SPECIAL OFFERS

WWW.STEVENALLENSTAMPS.COM

CHEQUES MADE PAYABLE TO BRITISH & COLONIAL
STAMPS LTD

PAY DIRECT TO
BRITISH & COLONIAL STAMPS CO.
CUTLERS FARM BARN
NEWLANDS LANE
PURBROOK
PO7 6TN

BARCLAYS ,
81A LONDON ROAD,
WATERLOOVILLE, PO7 7ER
IBAN: GBS3 BARC 2069 3423 7460 54
SWIFT IBAN BIC: BARCGB22
ACCOUNT NUMBER: 23746054
BRANCH SORT CODE: 20-69-34

PayPal

