

British and colonial stamps

April Fine & Rare Great Britain Part 2



96

**view our online shop & lists-
www.stevenallenstamps.com**

**10% Discount on Orders over £200
15% Discount on Orders over £500**

Email: Steveallen-orders@live.co.uk

Tel: 02392 253 133/

07535200922



1

SG 2 1d black plate 2 lettered EC. Used on wrapper from Louth to Croydon cancelled with a magenta Maltese cross. 4 margins (SG spec ASvd,tj) CAT £15,000. £3500



2

SG 3 1d grey-black plate eleven lettered ID. Very fine used on letter sheet from Shaftsbury to Blandford tied with a black Maltese cross. 4 fine margins. David Brandon cert. £5250



3

SG 8a 1d red-brown plate 21 lettered EA. Superb used on cover to Blandford, cancelled with a Dorchester, Feb 21st 1842 CDS. Full-good to large margins. £1850



4

SG 14f 1841 2d blue plate 3 lettered JB. Used on cover to Norfolk cancelled with a number '1' in Maltese cross. 4 margins, Aug 23rd & 24th 1843 back stamps on reverse. A nice clean item. £1100



5

SG 1 1d intense black lettered PA (recut letters). Very fine used with a crisply struck red Maltese cross. 4 good to large margins. £275



6

SG 1 1d black plate 2 lettered DJ. Very fine used with an upright deep red Maltese cross. 4 margins. £325



7

SG 2 1d black plate 1b strip of 6 lettered CB-CG. Good to fine used, full margins just clear to good. A rare multiple. £4500



8

SG 2 1d black plate 2 lettered FA. Very fine used with a red Maltese cross. 4 fine margins. £240



9

SG 2 1d black plate 2 lettered SH. Very fine used with a crisply struck upright red Maltese cross. 4 fine margins. £375



10

SG 3/7 1d matched pair from plate 2 lettered ID. Very fine used. 4 margins. £375



11

SG 2 1d black plate 2 lettered LC cancelled by a near complete Maltese cross in red. 4 fine margins. A lovely example. £375



12

SG 3 1d grey-black plate 3 lettered NB. Very fine used with a crisply struck red Maltese cross. 4 good margins. £240



13

SG 3 1d grey-black plate 3 lettered BE. Very fine used with an orange-red Maltese cross. 4 margins. £275



14

SG 2 1d black plate 4 lettered IA. Superb used with an upright dull red Maltese cross. 4 good margins. £450



15

SG 2 1d black plate 5 lettered OD. A fine fresh lightly mounted mint example. BPA cert. £6500



16

SG 3 1d grey-black plate 5 strip of 6 lettered EC-EH. Very fine used with black Maltese crosses. Full margins. A stunning rare multiple. £5200



17

SG 4 1840 2d deep blue plate 2 block of 4. Superb used with upright black Maltese crosses. Full margins, small 3mm scissor cut in margin on stamp RE-SE. A rare & attractive multiple CAT £22,000. £9750



18

SG 5 1840 2d bright blue plate 1 lettered MC. Very fine used with a vivid deep red Maltese cross. 4 fine margins CAT £1250. £625



19

SG 5 1840 2d blue plate 2 lettered NL, 'N' double (spec DS8d variety). Very fine used with a crisply struck black Maltese cross. 4 fine margins CAT £1150. £575



20

SG 5 1840 2d blue plate 1 pair lettered LE-LF. Very fine used with red Maltese crosses. Full good to large margins. £1500



21

SG 5 1840 2d blue plate 2 horizontal pair lettered TA-TB. Very fine used with crisply struck black Maltese crosses. £975



22

SG B1/lve 1841 1d red-brown/blue paper lettered LJ. Used on small piece cancelled with a Hayle Town CDS in yellow, creased at base. Unpriced by Stanley Gibbons. Possible unique. David Brandon cert. £5500



23

SG 8 1d red-brown lettered OJ. Very fine used with a full almost upright red Maltese cross. Photocopy of RPS cert. £2200



24

SG DP22 1d full deep red plate eleven lettered AD trial on Dickinson silk thread paper. A fine fresh marginal example with part inscription CAT £4750. £3500



25

SG E517 1841 2d blue plate 4 lettered BH without the spectacle variety. Very fine used. 4 good to huge margins CAT £1500. £475



26

SG 23a 2d blue plate 5 lettered AD. Very fine used. Scarce CDS example. £150



27

SG 24a 1d deep red-brown. Very blued paper lettered MF. Very fine used with an upright Chatham CDS, Feb 13th 1856. £175



28

SG 32 1d brown-rose. Very fine used, grossly misperfed example. Unusual. £55



29

SG 32 1d brown-rose plate 42. Very fine used CDS example dated 10th Nov 1856. £85



30

SG 34 2d blue plate 5 lettered QD. A fine fresh mounted mint example. Good colour & well centred CAT £2800. £750



31

SG 34wi 2d blue plate 5 lettered EF, variety inverted watermark. Very fine used CAT £325. £190



32

SG 35 2d blue plate 6 lettered DK. Very fine used Pearson Hill type cancel, Nov 27th 1857. £125



33

SG 36 1d rose-red lettered TB. Very fine used with a Liverpool spoon, March 1st 1858 cancel. £95



34

SG 38 1d pale red. Very fine used CDS example dated July 10th 1857. £85



35

SG 38 1d pale red plate 66 variety inverted watermark. Superb used with a part Devonport CDS. £175



36

SG 40 1d rose-red plate 55 strip of 4. Very fine used with '186' diamonds & Dublin CDS's. £65



37

SG 43 1d rose-red. Very fine used with a Waterford, Aug 21st 1874 CDS. £35



38

SG 43 1d rose-red plate 225. Very fine used with a Derby CDS & small part numeral, both plate numbers clear. £450



39

SG 43 1d red imprimaturs plates 81,95,106,107,125,126,127,130,135,138,143,144,150,155,163,164,172,174,185,188,195,196,200,203,215,218, 219 & 222. 30 examples. All with full margins. A nice clean lot CAT £12,750. £4800



41

SG 43 1d rose-red plate 114 block of 16. Very fresh with lovely deep colour. Unmounted mint, JJ with striking dot on chin flaw, stamp IJ with one perf loss. Exceptionally scarce multiple, possibly largest block known of this plate number CAT £4000. £3200



40

SG 44 1d lake-red plate 100. Very fine used with a Ballymena, Aug 15th 1878 CDS. £35



42

SG 45 2d blue plate 8. Very fine used with red & black CDS's. £35



43

SG 48 1/2d rose-red plate 5 corner marginal scarce plate pair. Very lightly mounted mint. £325



44

SG 48 1/2d rose-red plate 15 block of 6, 5 stamps being unmounted mint. Good colour & nice fresh multiple. £320



45

SG 49 1/2d rose plate 13 corner marginal plate block of 13, 7 stamps being unmounted. A very scarce multiple. £1100



46

SG 51 1 1/2d rose-red plate 1 block of 4, lower 2 stamps being unmounted mint CAT £3500 as a block. £1200



47

SG 51 1 1/2d rose-red plate 3 block of 4, 2 stamps being unmounted mint, others very lightly mounted. A fine scarce multiple CAT £2300 as a block. £975



48

SG 53 1 1/2d rose-red OP-PC error of lettering. A very fine used scarce CDS example cancelled with a Norwich 1874 CDS, March 9th 1874 CAT £2000+. David Brandon cert. £1500



49

SG 53a 1 1/2d rosy-mauve lettered DC. Prepared for use in 1860 but not issued. A fine mounted mint example CAT £4500. £2800



50

SG 57 10d brown plate 3. A fine fresh mounted mint example with 4 clear/large margins. £4200



51

SG 57 10d brown. Very fine used. 4 gigantic margins. RPS cert. £950



52

SG 62 4d carmine block of 4. Very fresh mounted/ lightly mounted mint. Good deep colour & centring. A very rare multiple possibly unique CAT £6000 as a block. £17,500



53

SG 66a 4d rose. A fine fresh lightly mounted mint example with good colour. £675



54

SG 72 1/- green. A fine fresh mounted mint example. Good colour & well centred. Scarce in this quality CAT £3250. £1750



55

SG 76 3d bright carmine-rose. Fresh mint block of 4, stamps GJ & HJ being unmounted mint, GI & HI very lightly mounted CAT £13,500 as a block. A rare multiple, seldom seen in this quality. £4800



56

SG 81 4d bright red (hair lines). A very fresh mounted mint example. Good colour & well centred. £675



57

SG 81 4d bright red. Very fine used with a Stirling, Sept 1st 1864 CDS. Nice deep colour. £150



58

SG 86 9d bistre. A fine fresh mounted mint example with deep colour. £975



59

SG 86 9d bistre. Very fine used with a Liverpool CDS, 5th July 1862. Good colour & well centred. £425



60

SG 87 9d straw. A fine fresh lightly mounted mint example with good colour. £1250



61

SG 90 1/- green. A fine fresh very lightly mounted mint example with good colour. Scarce in this quality CAT £2500. £975



62

SG 96 6d deep lilac plate 6 (with hyphen). A fine fresh very lightly mounted mint example with good deep colour, seldom seen in this quality CAT £3800. £1650



63

SG 101 1/- green plate 5 abnormal imprimatur. A lovely fresh example with good to large margins CAT £5500. £2750



64

SG 113 10df pale red-brown. A fine fresh lightly mounted mint example with good colour CAT £2750. £1275



65

SG 124a/150. 1872 6d pale chestnut plate 12 abnormal on piece with 1/- green plate 8 CAT £3500. BPA cert. £2400



66

SG 130 5/- rose on blue paper, watermark large anchor. Very fine used with a Hope St Glasgow, Jan 25th 1883 CDS. £1500



67

SG 131 10/- grey-green, watermark anchor on blue paper. Superb used with an upright St Enoch square, Oct 9th 1883 CDS CAT £4500. £3200



68

SG 132 £1 brown-lilac, watermark large anchor on blue paper. Very fine used with a Liverpool exchange, 24th Nov 24th 1883 CDS. Superb deep colour & well centred. Philatelic expertising cert CAT £7000. £5500



69

SG 137 £5 orange. Very fine used with a crisply struck Hastings, May 3rd 1902 CDS. Fine deep colour. £2800



70

SG 137 £5 orange, watermark anchors lettered BJ. A pristine unmounted mint example. Good deep colour & well centred. BPA cert. £13,500



71

SG 138 2½d rosy-mauve plate 1, blue paper. A fine fresh mounted mint example. £275



72

SG 139 2½d rosy-mauve plate 1. Very lightly mounted mint. Fine colour & well centred. £375



73

SG 141 2½d rosy-mauve plate 6. A fine fresh very lightly mounted mint example with good colour & well centred. £240



74

SG 148 1/- deep green plate 8. Very lightly mounted mint. Good deep colour & well centred. £375



75

SG 150 1/- green plate 9. A fine fresh very lightly mounted mint example. £375



76

SG 150 1/- green plate 10. Lightly mounted mint, good colour. £325



77

SG 153 4d sage-green plate 15 block of 4. Fresh mint with good colour, lower 2 stamps being unmounted mint. A fine scarce multiple CAT £6000+. £3700



78

SG 156 8d orange. A fine fresh lightly mounted mint example. Good deep colour & well centred. £675



79

SG 176 5/- rose on blued paper. A fine fresh mounted mint example CAT £12,500. David Brandon cert. £4200



80

SG 180 5/- rose. Very fine used with a Portsmouth, Dec 23rd 1893. Good colour & well centred. £80



81

SG 183 10/- ultramarine block of 4. Superb used with Newcastle upon Tyne CDS's, May 30th 1889. Good centring & fine colour. A scarce multiple. £1275



82

SG 206 4½d green & carmine imprimatur. Lightly mounted mint. Scarce CAT £800. £475



83

SG 212 £1 green. Very fine used with a crisply struck upright Wolverhampton CDS, June 21st 1895. Good colour & well centred. Lovely example. £525



84

SG 212 £1 green. A fine fresh unmounted mint marginal example with good deep colour & well centred. £3750



85

SG 265 10/- ultramarine. A fine fresh unmounted mint marginal example. Good deep colour & well centred. £1500



86

SG 265 10/- ultramarine. Very fine used with a Gracechurch CDS, 7th April 1910. £275



87

SG 266 £1 green. A fine fresh unmounted mint corner marginal example. Good deep colour & well centred. £2500



88

SG 317 2/6 dark purple. Very fine used with a Liverpool exchange CDS, Jan 1st 1913. £75



89

SG 318 5/- carmine. A fine fresh corner marginal example with date cut. Unmounted mint. £750



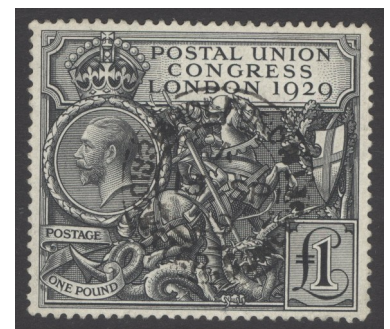
90

SG 403 £1 deep green Spec N72(2). Very fine used with a Guernsey CDS. £1350



91

SG 404 £1 dull blue-green. A fine fresh unmounted mint example with good colour & centring. £3600



92

SG 438. 1929 PUC £1 black. Very fine used perfectly centred with full perforations CDS dated 13th Sept 1929 CAT £600. £375



93

SG 456a. 1935 Jubilee 2½d Prussian blue. Very fine used on piece with PUC ½d tied with a Harpenden CDS. A George V rarity. BPA cert. £11,500



94

1934-36 George V definitive on one cover postmarked with the correct nine First day of issue dates using a mixture of Sutton Coldfield & Birmingham CDs, leading dealers Francis Field produced about 25 of these rare covers this being one of them. Condition very fine. £2500



95

SG O9c 1882-1901. 10/- cobalt I.R. official. Very fine used with '326' telegraphic cancels, faint toning at top. Rare CAT £9500. RPS cert. £6500



N^o 104863

THE ROYAL PHILATELIC SOCIETY
LONDON

41, Devonshire Place,
London, W1N 1PE

AFTER CONSULTATION

Meeting of 17 MAY 1978

In the OPINION of The **EXPERT COMMITTEE** the item submitted as

Great Britain: 1882-1901 S.G. N^o 09a.

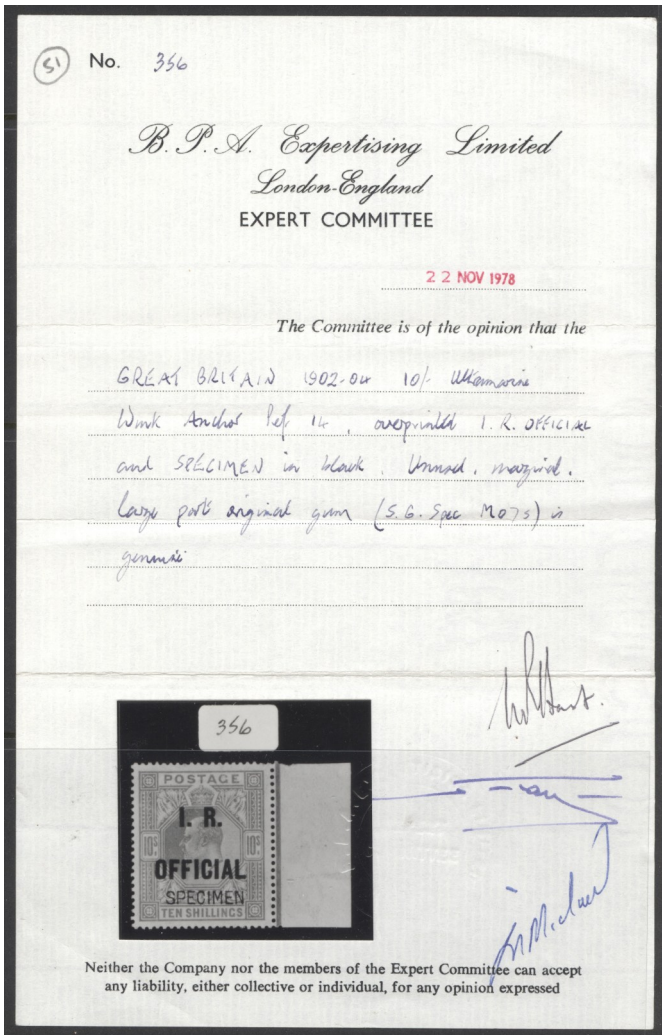
10s. cobalt - used - is genuine.

Observations *Stamped.*

[Signature] Chairman

Notes:

Telegraphic use.



96

SG O26s. 1902-04. 10/- ultramarine I.R. official overprinted specimen. A fine fresh mounted mint example with good deep colour & well centred. Rarely seen CAT £20,000. BPA cert. £16,500



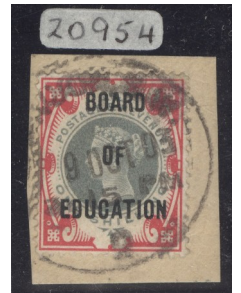
97

SG O32. 1896-1902. 1/2d blue-green O.W. official block of 4. Good used CAT £1400. BPA cert. £325



98

SG O82 1/- green & carmine, overprinted Board of education. A superb unmounted mint example. David Brandon & Wenvoe certs. Rare in this quality CAT £12,000. £9750



99

SG O82. 1902 1/- green & carmine Board of education. Very fine used example on small piece. Rare CAT £6000. David Brandon cert. £4500



100

SG O103 1 1/2d dull purple & green Admiralty official. Very fine used with an East Cowes CDS, Jan 23rd 1904. £85



101

SG O104 2d yellowish-green & carmine-red Admiralty official block 4. Fine used with Portsea CDS's CAT £1200. Scarce multiple. £575

Ebay/hipstamp- steveallen777

Website-
www.stevenallenstamps.com



Email: Steveallen-orders@live.co.uk
Overseas Tel: +44(0)2392 253 133

Cheques made payable to British & Colonial Stamps LTD

British & Colonial Stamps Ltd.
Cutlers Farm Barn
Newlands Lane
waterlooville
PO7 6TN

Barclays ,
81a London Road,
Waterlooville, PO7 7ER
IBAN: GB53 BARC 2069 3423 7460 54
SWIFT IBAN BIC: BARCGB22
ACCOUNT NUMBER: 23746054
BRANCH SORT CODE: 20-69-34

PayPal

