

BRITISH AND COLONIAL STAMPS

NOVEMBER GB PART 3



101

10% DISCOUNT ON ORDERS OVER £100
15% DISCOUNT ON ORDERS OVER £500

EMAIL; STEVEALLEN-ORDERS@LIVE.CO.UK
TEL; 02392 253 133



1

SG 218 1/2d yellowish-green, overprinted specimen, type 17 (Horseshoe) watermark inverted. Very lightly mounted mint. Scarce (spec M2/2a.s). Hendon cert. £425



2

SG 219wi booklet pane of 6. 4 being unmounted mint, other two being very lightly mounted, overprinted specimen, type 17 (Horseshoe). Scarce (spec MB5as). £1650



3

SG 229 2d dull blue-green & carmine. A fine fresh unmounted mint example. Spec M12(2) CAT £180. £55



4

SG 231 2 1/2d very deep ultramarine. A pristine unmounted mint example with exceptional bright deep colour. Spec M16(4) CAT £110. £55



5

SG 233 3d dull red purple/lemon. Fine unmounted mint. Spec M20(3) CAT £425. £175



6

SG 236 4d green & chocolate-brown. Fine unmounted mint. Spec M23(3) CAT £125. £60



7

SG 241 4d orange-red. A pristine unmounted mint lower marginal block of 4. Spec M25(3) CAT £200. £85



8

SG 248 6d dull purple. Fine unmounted mint. Spec M32(2) CAT £85. £40



9

SG 250a 9d slate-purple & pale ultramarine, chalky paper. Fine unmounted mint. Spec M40(2) CAT £250. £95



10

SG 251a 9d variety slate purple & very pale ultramarine. Superb used on small piece cancelled with an Ascension, Aug 22 1910 CDS. Hendon cert. £320



11

SG 254aas 10d overprinted specimen, type 16. Pristine unmounted mint. £475



12

SG 254 10d 'carmine-pink'. Superb used with a Burnt Island CDS, Oct 9th 1903 (spec M42/3). £120



13

SG 225 10d slate purple & deep (glossy) carmine. Superb used with a Markey Drayton CDS. Scarce shade, rarely seen in this quality (spec M43/4). Hendon cert. £1275



14

SG 256 10d scarlet. Superb used on small piece with a Voe 20th Oct 1911 CDS (spec M43/5). £55



15

SG 257 1/- dull green & carmine. Very fine used with a Ton.Y.Pandy 1905 CDS (spec M45/2). £30



16

SG 260 1902-10. 2/6 lilac. Superb used with an upright Keighley CDS, 20th Feb 1903. £130



17

SG 261 2/6 very pale purple. Fine unmounted mint Spec M49(1) CAT £675. £375



18

SG 261 Spec M49(1) 2/6 pale dull purple, chalky paper. Fine mounted mint CAT £350. £130



19

SG 262 2/6 dull purple (chalk surfaced paper). A pristine very lightly mounted mint example CAT £350. £180



20

SG 262 2/6 dull purple. Very fine used St Peters, Manchester CDS, April 30th 1903. £95



21

SG 262 2/6 dull lilac. Superb used with a Sunderland CDS, Sept 14th 1911. £140



22

SG 264 5/- deep bright carmine. A fine very fresh lightly mounted mint example. Nice deep colour & well centred CAT £450. £220



23

SG 264 5/- deep bright carmine. Very fine used with a Poplar B.O CDS, July 22nd 1904 CAT £220. £95



24

SG 265 10/- ultramarine. Very fine used with an East Strand CDS, Oct 28th 1904 (spec M53/1) CAT £500. £350



25

SG 265 10/- ultramarine. A superb used example cancelled with a crisply struck Oxford CDS, Feb 12th 1903. £450



26

SG 265 10/- ultramarine. Fine unmounted mint CAT £2000. £1400



27

SG 266 1902-10 De La Rue £1 dull blue-green. Very fine used with a Guernsey CDS. Good colour & well centred CAT £825. £325



28

SG 267 1/2d dull yellow-green, watermark inverted. Fine unmounted mint CAT £100. £60



29

. SG 267aw 1/2d inverted watermark with St Andrews cross. Fine unmounted mint CAT £400. £240



30

SG 269 1/2d deep dull yellow-green. Very blotchy print. A superb mint block of 4 with 3 adhesives untouched mint unmounted. A 'Royal' certificate accompanies. £175



31

SG 269a 1/2d deep dull green with St Andrews cross attached. Very fine used, upright watermark. £220



32

SG 271 1/2d deep bright green (spec M3/7). Fine unmounted mint. RPS cert. £375



33

SG 271 1/2d bright green (Fine impression). Very fine used on piece with a Whitechurch 1911 CDS (spec M3/6). BPA cert. £130



34

SG 272a 1d brick-red with no watermark. Fine unmounted mint marginal example CAT £75. £40



35

SG 273 1d intense rose-re. Spec M6(3). Fine unmounted mint CAT £375. £175



36

SG 273 1d control A11 strip of 3. Very fine used on small piece, cancelled with Ascension CDS's, 11th Aug 1913. £285



37

SG 274 1d rose-carmine control A11 corner marginal mint strip of 3, left 2 stamps being unmounted. Spec M6(5). £95



38

SG 2 1d black plate 5 lettered BE. Very fine used with a part orange/red Maltese cross, leaves Queens profile clear. 4 margins. £275



39

SG 275 1d aniline-pink. Superb used with a Maghull Station 1911 CDS (spec M6/8). £325



40

SG 2 1d black plate 6 lettered IH. Very fine used with a full upright red Maltese cross. 4 margins. £325



41

SG 278 4d bright orange. Spec M26(1). A fine fresh scarce unmounted mint lower right corner marginal block of 4 with lovely deep colour CAT £900. £425



42

SG 279a 1/2d deep dull green (blotchy). Spec M4(3). Very fine used CAT £400. £240



43

SG 280 Spec M7(1) variety 1d rose-red 1911 perf 15x14 block of 4. Variety double gum. Unmounted mint some faint gum bends. Hendon cert. £85



44

SG 289 1 1/2d slate-purple & green. Fine fresh marginal block of 4, 3 stamps being unmounted mint. Spec M10(7). £95



45

SG 292 2d grey & bright carmine. Spec 13 (3). Fine unmounted mint CAT £55. £25



46

SG M33a(1) 6d pale dull purple, lower sheet corner marginal block of 6. Fine unmounted mint. £175



47

SG M33a(3) 6d reddish-purple. Fine unmounted mint block of 4. £95



48

SG 301 6d on Dickinson coated paper. Date cut corner marginal. Very lightly mounted mint (spec M34/1). £240



49

SG 301 6d on Dickinson coated paper. Variety deep dull purple. Very fine used with a part Taunton CDS (spec M34/ivar). Hendon cert. £190



50

SG 309 10d deep scarlet. Lightly mounted mint (spec M44/4). Hendon cert. £150



51

SG 310 10d reddish-purple & aniline pink. Spec M44(5). Fine mounted mint CAT £275. £110



52

SG 310 10d reddish-purple & aniline pink. Spec M44(5). Fine mounted mint CAT £275. Hendon cert. £140



53

SG 309 10d deep dull purple & scarlet. Fine unmounted mint (spec M44/3). £140



54

SG 313 1/- deep green & scarlet 1911-13 variety inverted watermark. Spec M47(2)b. Fine unmounted mint CAT £240. Hendon cert. £150



55

SG 313 1/- green & scarlet 1911-13 variety inverted watermark. Fine mounted mint Spec M47(4)b CAT £150. Hendon cert. £85



56

SG 318 1911-13. 5/- carmine. A pristine unmounted mint example CAT £875. £675



57

SG 362a 1912-24. 1½d red-brown 'pencf' error variety. Very lightly mounted mint CAT £300. £150



58

SG 363 1½d brown. Fine unmounted mint. Scarce shade (spec N18/8). Hendon cert. £475



59

SG 364a 1½d chestnut 'pencf' error in pair. Very fine used part CDS at top, clear of variety (spec N18/13f). £90



60

SG 372 2½d deep bright blue. Fresh mounted mint (spec N21/15). RPS cert. £220



61

SG 385 6d used on small piece cancelled with an Ascension CDS, 22nd June 1916 CAT £180. £120



62

SG 403 £1 deep green. Spec N72(2). Very fine used with a Guernsey CDS. Good deep colour & well centred CAT £2000. £1375



63

SG 403 1913. £1 green. Very fine used with a Guernsey CDS. RPS cert. £1250



64

64. SG 404 £1 blue-green. A pristine unmounted mint marginal example. £3600



65

SG 406 1915 2/6 yellow-brown. A fine fresh unmounted mint example CAT £550. £375



66

SG 411 1915 10/- deep (intense) bright blue with 'kiss print' variety on left hand side. Fine used with a rubber London 14th June 1918 CDS. Lovely deep colour. Rare shade (spec N70/5) CAT £4000. David Brandon cert. £1275



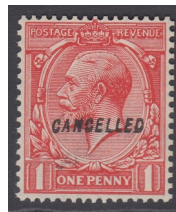
67

SG 412 1915 10/- blue. Fine used with a London CDS. Spec N70(1) CAT £875. £275



68

SG 417 1918 10/- dull grey-blue. A fine fresh unmounted mint example. Good deep colour & well centred CAT £850. £475



69

SG 419 1d overprinted specimen cancelled type 28. Fine unmounted mint (spec N34x). £80



70

70. SG 419 1d watermark inverted overprinted cancelled type 28. Fine unmounted mint (spec N34.x). Hendon cert. £90



71

SG 420 1½d overprinted cancelled type 33, watermark upright. Ex booklet. Fine unmounted mint. Scarce. £180



72

SG 420c 1½d variety printed on gummed side. Fine unmounted mint. RPS cert. £750



73

SG 420a 1½d red-brown variety tete-beche pair with gutter. Very lightly mounted mint (spec N35aa). £525



74

SG 420a 1924 1½d red-brown variety tete-beche pair. Very lightly mounted smint CAT £500. £325



75

SG 420c 1924 1½d red-brown variety printed on the gummed side. A fine unmounted mint marginal example CAT £1000. £750



76

SG 423wi 3d violet variety inverted watermark. A pristine unmounted mint example CAT £140. £85



77

SG 425wi 5d variety inverted watermark.
Very fine used 1930 CDS. £140



78

SG 427wi 9d variety inverted watermark.
Very fine used Spec N43/1a. £100



79

SG 427wi 1924. 9d olive-green variety
watermark inverted marginal example.
Stamp unmounted CAT £175. £85



80

SG 428wi 10d variety watermark inverted.
Very fine used with a crisp Leatherhead
1926 CDS. A George V rarity. RPS cert.
£2200



81

SG 429wi 1/- variety inverted watermark.
Very fine used part CDS. Scarce. £325



82

SG 429wi 1/- bistre-brown variety inverted
watermark. Fine unmounted mint CAT
£600. £425



83

SG 434wi-436wi. 1/2d-1 1/2d PUC with water-
mark inverted. Fine unmounted mint CAT
£85. £50



84

SG 434a-436a. 1/2d-1 1/2d PUC with water-
mark sideways. Fine unmounted mint CAT
£310. £150



85

SG 436c 1 1/2d purple-brown variety 1829
for 1929. Very fine used. £130



86

SG 442b 2d orange, watermark sideways. A
pristine unmounted mint example CAT
£225. £120



87

SG 343 1d aniline-scarlet. A fine fresh un-
mounted mint marginal example (spec
N11/5). Hendon cert CAT £275. £200



88

SG 438 £1 black overprinted specimen,
type 32 in red. Fine unmounted mint.
£2800



89

SG 441) 1934 1 1/2d colour trials imperf (large
format) in red-brown, ultramarine, deep grey-
green. Fine fresh 4 margin examples, red-brown
& grey being unmounted CAT £520. £275



90

SG 341a 1d 'no cross on crown' variety. A
fine fresh unmounted mint example (spec
N11/1b) CAT £150. £120



91

SG 419 1d overprinted specimen type 29 diagonally. Unmounted mint. Scarce (spec N34/1.ub). RPS cert. £650



92

SG 450-452. 1934. 2/6 to 10/- set of 3. Very fine used CDS examples CAT £190. £45



93

. SG 464b/350b 1/2d & 1d variety imperf set of two values. Fine unmounted mint marginal examples CAT £475. £375



94

SG O4 6d grey IR official. Unmounted mint corner marginal scarce pair. £975



95

SG O5 1/2d IR official slate-blue. Fine unmounted mint. £90



96

SG O6 2 1/2d lilac IR official. A fine mounted mint example of this scarce official. RPS cert. £420



97

SG O9 5/- rose IR official. Superb used with a Sunderland 1901 CDS. Nice deep colour & well centred CAT £2500. RPS cert. £1850



98

SG O9b 5/- rose IR official with overprint in 'blue-black'. Lightly mounted mint, faintest of tone in left margin, barely seen. Very scarce CAT £14000. Wenvoe cert. £6500



99

SG O9b 5/- rose IR official, overprinted in blue-black with crisp upright Birmingham CDS, 28 Dec 1886 CAT £3200. Wenvoe cert. £2200



100

SG O14 2 1/2d purple/blue IR official, overprinted specimen. Very lightly mounted mint. £85



101

SG O35 1896-1902. 10d dull purple & carmine OW official. A fine fresh lightly mounted mint example CAT £7250. BPA cert. £5200



102

SG O38 2d yellowish-green & carmine, overprinted O.W. official. Very fine used CAT £450. RPS cert. £325



103

SG O39 2½d ultramarine O.W. official. Used on small piece, cancelled with a Parliament CDS CAT £675. Peter Holcombe cert. £325



104

SG O41/3a. ½d & 1d Army (official). Fine mounted mint CAT £540. £190



105

SG O41/3a. ½d & 1d Army (official). Fine mounted mint CAT £540. £190



106

SG O44 2½d purple on blue paper Army official. Pristine unmounted mint marginal block of 12 CAT £600+. Wenvoe cert. £450



107

SG O48 ½d blue-green Army official block of 10. Fine unmounted mint. £45



108

SG O50 1902-03. 6d pale dull purple. Pristine unmounted mint CAT £175. Wenvoe cert. £150



109

SG O62 6d dull green GOVT parcels, overprinted specimen. A scarce pristine unmounted mint example seldom seen in this quality. Wenvoe cert. £325



110

SG O64 1883-86. 1/- orange-brown plate 13. Fine mounted mint CAT £1750. BPA cert. £875



111

SG O66s 6d purple-rose GOVT parcels, overprinted specimen. A fine fresh lightly mounted mint example CAT £250. £130



112

SG O67 9d dull purple & blue, overprinted GOVT parcels with variety 'open top to S'. A fine fresh lightly mounted mint example CAT £425. Wenvoe cert. £275



113

SG O67s 9d GOVT parcels, overprinted specimen, type 9. Pristine very lightly mounted mint. Wenvoe cert. £220



114

SG O68s 1/- dull green GOVT parcels, overprinted specimen. Lightly mounted mint CAT £300. £175



115

SG O71 4½d green & carmine GOVT parcels. A fine mounted mint example CAT £400. Wenvoe cert. £175



116

SG O72 1/- green & carmine, overprinted GOVT parcels. Lightly mounted mint CAT £650. 3275



117

SG O85 1902-04. 2½d ultramarine Board of Education. Lightly mounted mint, faint gum crease unseen at face CAT £5000. BPA cert. £875



118

SG O103 1½d dull purple & green Admiralty official. A fine fresh mounted mint example CAT £325. BPA cert. £220



119

SG O104 2d yellowish-green & carmine-red Admiralty official. Fine mounted mint. £240



120

SG O105 2½d ultramarine Admiralty official. A fine fresh mounted mint example CAT £475. Wenvoe cert. £275



121

SG O106 3d dull purple & orange-yellow Admiralty official. Fine mounted mint CAT £425. BPA cert. £275



122

SG O108 1903-04. 1d scarlet A.O. A pristine
unmounted mint block of 4 CAT £840.
Scarce multiple. £420



123

SG T5s 1877 4d plate 1 overprinted speci-
men, type 9. Fine unmounted mint. £65



124

SG T6 1877 6d imperf plate 1 overprinted
specimen, type 11. Fine mounted mint CAT
£130. £75



125

SG T8 1876 1/- plate 1 imperf overprinted
specimen. Very lightly mounted mint (spec
L215s) CAT £170. £120



126

SG T13s 1876 5/- telegraphs plate 1 over-
printed specimen, type 9. Corner marginal
pair. Fine unmounted mint with plate
number. £650



127

SG T16 1876 10/- grey-green telegraph.
Very fine used with a London Western
office CDS, Aug 13th 1881 CAT £450. £325



128

SG T16s 1875 10/- grey-green, overprinted
specimen, type 10. Lightly mounted mint
CAT £400. £220



129

SG 898ya 1972 explores 5d variety 'Gold' Queens head omitted. Fine unmounted mint with normal for comparison. £220



130

SG 926 1973 7½d explorers. Two faced Raleigh variety (doubling on face). Fine unmounted mint with normal for comparison. £275



131

SG 916a 1972 Silver wedding 3p 'Silver' omitted (inscription & value). Fine unmounted mint with normal for comparison. £675



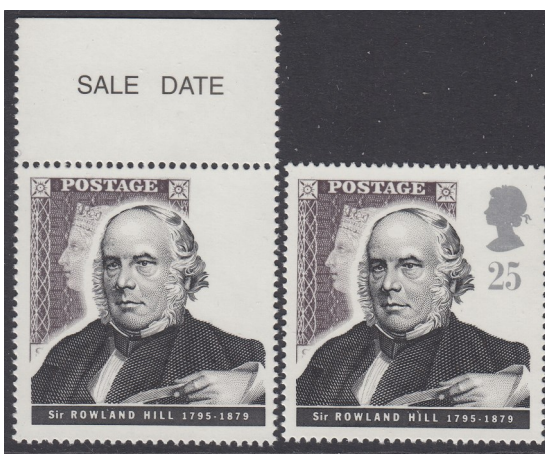
132

SG 1121 1980 Landmarks 12p with a spectacular mis-perf. Fine unmounted mint. £275



133

SG 1410 1988 Castles spectacular misperf on corner marginal example. Fine unmounted mint. £275



134

SG 1888a 1995 Pioneers 25p variety 'Silver' omitted (Queens head & face value). Fine unmounted mint with normal for comparison. £675

EMAIL; STEVEALLEN-ORDERS@LIVE.CO.UK
TEL; 02392 253 133

SUBSCRIBE FOR FREE WITH YOUR EMAIL ADDRESS ON
WWW.STEVENALLENSTAMPS.COM TO GET ALL OUR MAILING
LISTS AND FUTURE SPECIAL OFFERS

WWW.STEVENALLENSTAMPS.COM

CHEQUES MADE PAYABLE TO BRITISH & COLONIAL
STAMPS LTD

PAY DIRECT TO
BRITISH & COLONIAL STAMPS CO.
CUTLERS FARM BARN
NEWLANDS LANE
PURBROOK
PO7 6TN

BARCLAYS ,
81A LONDON ROAD,
WATERLOOVILLE, PO7 7ER
IBAN: GB53 BARC 2069 3423 7460 54
SWIFT IBAN BIC: BARCGB22
ACCOUNT NUMBER: 23746054
BRANCH SORT CODE: 20-69-34

PayPal

