

# British and colonial stamps

April

Fine & rare Great Britain Part 1



176

view our online shop & lists-  
[www.stevenallenstamps.com](http://www.stevenallenstamps.com)

**10% Discount on Orders over £200**  
**15% Discount on Orders over £500**

Email: [Steveallen-orders@live.co.uk](mailto:Steveallen-orders@live.co.uk)

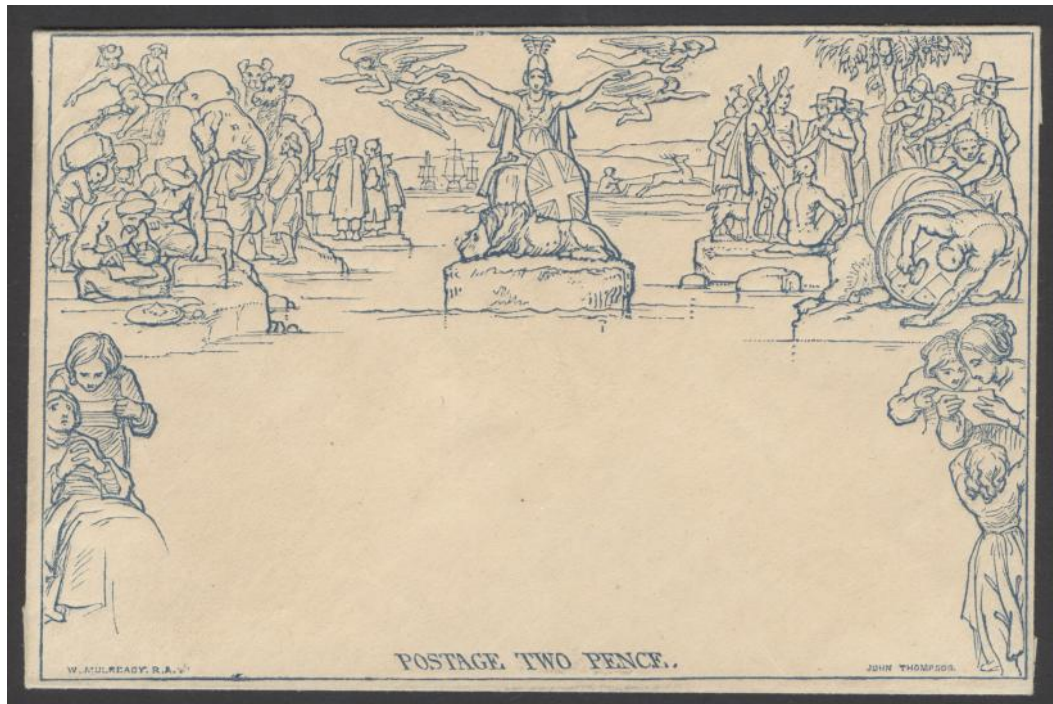
Tel: 02392 253 133/

07535200922



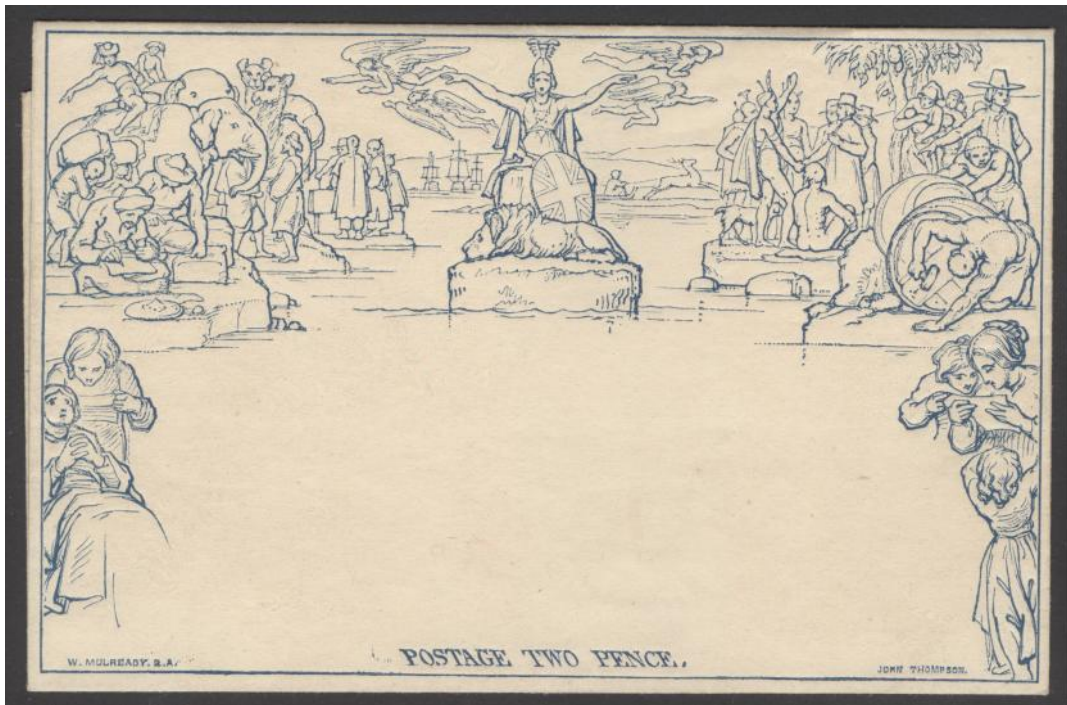
1

Southgates Comic envelope No.1 'The Pickpocket'. The first of these envelopes was issued 01 June 1840. Drawn by Frederick Froome & engraved by George Edward Madeley, this is known as 'The Pickpocket' from the image at lower right. The actual envelope is shown opposite. This copy was sent to 'John Masters Esqr, Sligo' on 11 July 1840. This address was written on the back, presumably so as not to spoil the design. Despite this the London despatch CDS was applied to front of the envelope. A penny black postage stamp was used to pre-pay the postage and being stuck on the reverse, is also served to seal the envelope. This postage stamp was cancelled with a red Maltese cross and has been largely destroyed when the envelope was opened. The reverse also has a strike of the two-line 'T-P/WoolwichE-O' mark. The envelope has some light soiling, creasing and small tears on left side. Scarce. £1800



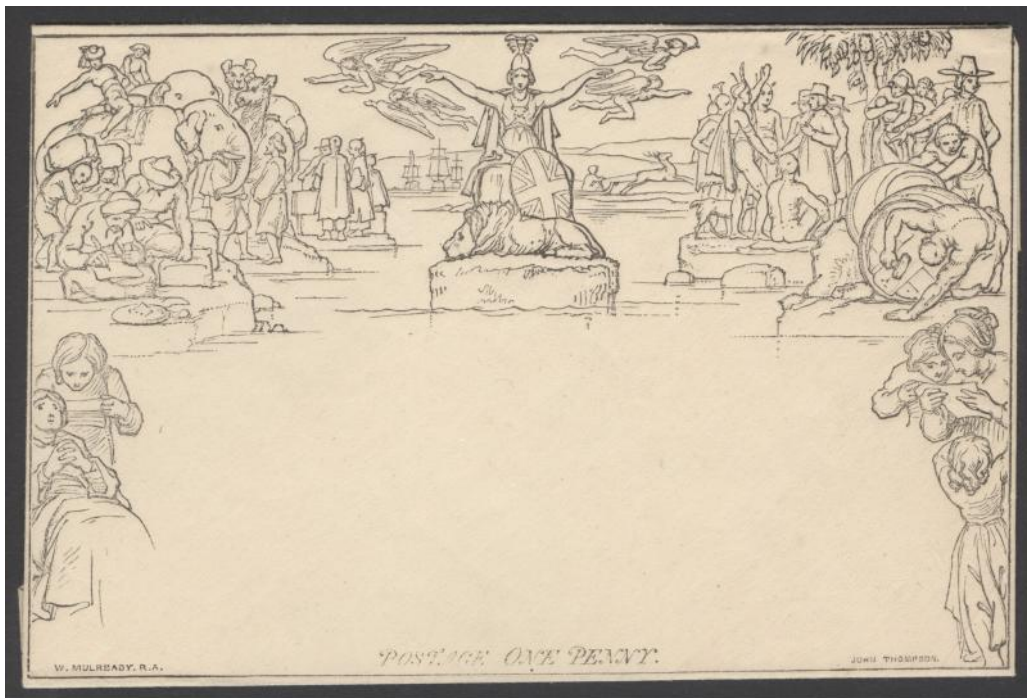
2

SG ME4 1840 2d envelope. Fine mint condition CAT £400. £190



3

SG ME3 1840 2d blue letter sheet. Fine fresh mint condition CAT £400. £240



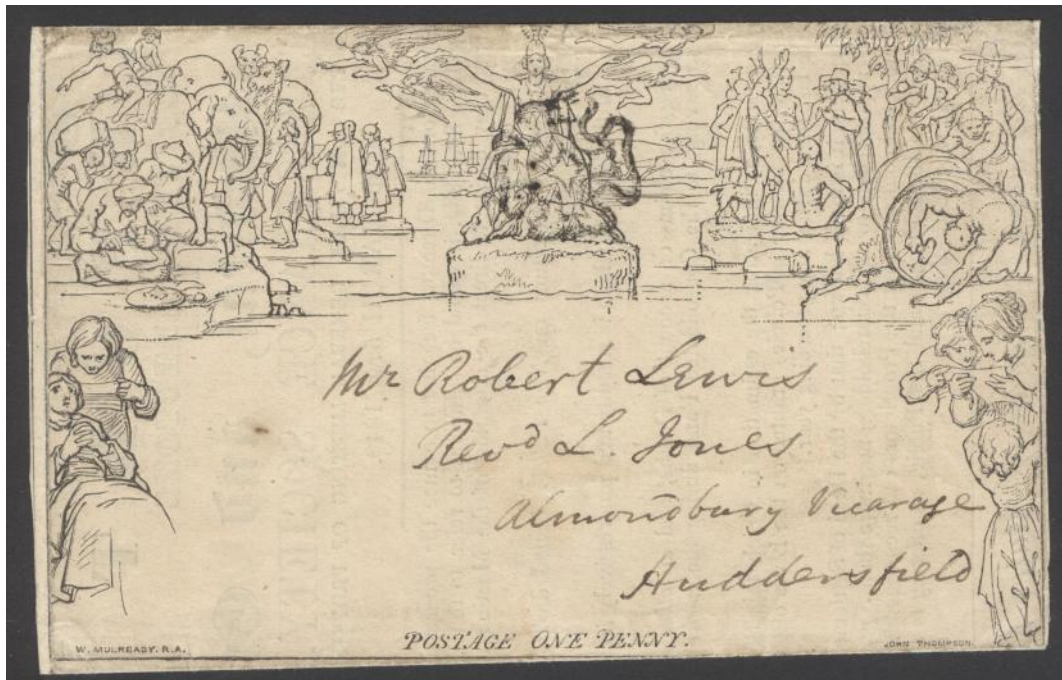
4

SG ME2 1840 1d black envelope. Unused in fine fresh condition CAT £300. £175



5

SG M1 1840 1d black letter sheet. Unused in fine condition CAT £300. £175



6

SG M1 1840 1d letter sheet, addressed to Robert Lewis, Huddersfield, Dec 1841. Good condition for age CAT £450. £190



7

1840 Southgate number 3 'peg leg sailor' hand coloured envelope. Fine condition. £450



8

SG 2 1d black plate 9 lettered CL on entire to Denham. Fine used tied with a black Maltese cross. 4 margins. Usual filing crease clear of stamp CAT £1000. £325

No. 70,478

*B. P. A. Expertising Limited*  
*London - England*

EXPERT COMMITTEE

..... 10th August, 2007.....

The Committee is of the opinion that the

GREAT BRITAIN: 1840. 1d. black, Wmk Small Crown,.....  
Imperf., Plate Two, Imprimatur: "After Hardening",.....  
lettered T-I, without gum as prepared, is genuine. *d*



*Andrew Clark*  
*Chairman*

Neither the Company nor the members of the Expert Committee can accept any liability, either collective or individual, for any opinion expressed.

Nº 133250

THE ROYAL PHILATELIC SOCIETY  
LONDON



41, Devonshire Place,  
London, W1N 1PE

Meeting of 11 SEP 1985

In the OPINION of The EXPERT COMMITTEE the item submitted as

*Great Britain 1840 S.G. N°*  
*1d. Black - Imperf. imprimatur -*  
*Plate II - is Genuine.*

Observations *After Hardening*



*Clark*  
Chairman

THE ROYAL PHILATELIC SOCIETY  
LONDON  
EXPERT COMMITTEE



9

1840 1d black imperf plate 2 imprimatur 'after hardening' lettered TI. Without gum as prepared. A lovely fresh example with 4 margins. BPA & RPS certs CAT £15,000. £9500



**10**

SG 3 1d grey-black plate 1a lettered II. Very fine used with a red Maltese cross. 4 large margins. £325



**11**

SG 2 1d black plate 1b lettered FF. Very fine used with an upright red Maltese cross. £275



**12**

SG 2 1d black plate 1b lettered DH. Very fine used with a crisply struck red Maltese cross. 4 margins. £275



**13**

SG 1 1d intense black plate 1b lettered II, showing non coincident re-entry. Very fine used with a black Maltese cross. 4 margins. £240



**14**

SG 2 1d black plate 2 lettered NC. Very fine used with a crisply struck red Maltese cross. 4 margins. £325



**15**

SG 2/7 1d matched pair plate 2 lettered KE. Very fine used. 4 margin examples. £375



**16**

SG 2 1d black plate 3 lettered KG. Very fine used with a crisply struck red Maltese cross. 4 margins. £325



**17**

SG 2 1d black plate 4 lettered IH. Very fine used with Manchester 'fishtail' Maltese cross. 4 fine margins. £325



**18**

SG 2 1d black plate 4 lettered FH. Very fine used with a crisp red Maltese cross. 4 margins. £240



**19**

SG 1/7 1d matched pair plate 5 lettered EI. Very fine used, full margin examples. £275



**20**

SG 1 1d intense black plate 5 lettered DF. Very fine used with a crisply struck upright Maltese cross in red. 4 close/fine margins. £275



**21**

SG 2 1d black plate 5 lettered FB. Very fine used with a red Maltese cross. 4 margins. £275



**22**

SG 3 1d grey-black plate 6. Very fine used with a black Maltese cross. 4 margins. £240



**23**

SG 3 1d grey-black plate 6 lettered NK. Very fine used with a deep red Maltese cross. 4 fine margins. £275



**24**

SG 1 1d intense black plate 6 lettered IK. Very fine used with a red Maltese cross. 4 fine/large margins. £275

*Bernard Behr*      *Pascal Behr*

Expert honoraire  
près la Cour d'Appel de Paris.

Expert A.I.E.P.

30 Avenue de l'Opéra 75002 Paris France  
18 rue Drouot 75009 Paris France  
19 rue du Rhône 1204 Genève Suisse

*Certificat d'Authenticité*

N°259759

Nous, soussignés, **Bernard et Pascal BEHR**, certifions  
que le timbre photographié ci contre :

Pays: **GRANDE BRETAGNE**  
N° **1** du catalogue **Yvert et Tellier**  
Etat: \*\*

**1840. 1d. Black. Pate 7. Wmk. Small Crown. Imperf. Lettered  
J-A (SG Spec AS44) unused. Inscription marginal with full  
original gum is genuined.**

*[Signature]*  
Est authentique,  
lors de l'Examen  
Paris, le 28/06/2016

*B. P. A. Expertising Limited*  
*London - England*

EXPERT COMMITTEE

*The Committee is of the opinion that the*

No: 101,189

14th July, 2025

GREAT BRITAIN: 1840 1d black, Wmk Small Crown, Imperf, Plate Seven,  
lettered J-A (SG2, Spec AS46), left marginal, the selvedge extending up,  
showing part marginal inscription "...wards the RIGHT HAND SIDE of the  
Letter...", unused with original gum disturbed by light bend and natural  
paper exclusion, small scissor cut between stamp and margin, is  
genuine.



*[Signature]*  
*[Signature]*

Neither the Company nor the members of the Expert Committee can accept  
any liability, either collective or individual, for any opinion expressed.



25

SG 2 1d black plate 7 lettered JA, left hand marginal with selvedge extending up. Full original gum,  
faint gum bend. BPA & Pascal Behr certs. £7500



**26**

SG 2 1d black plate 7 lettered KL marginal example with part inscription. Very fine used with a black Maltese cross. £1750



**27**

SG 2 1d black plate 7 lettered TK. A rare unmounted mint example with 4 margins & part inscription, minor gum bend. £4500



**28**

SG 2 1d black plate 8 lettered CJ. Very fine used with a black Maltese cross. 4 margins. £275



**29**

SG 2/7 1d matched pair plate 8 lettered LJ. Very fine used both with 4 good to large margins. £350



**30**

SG 1 1d intense black plate 8 lettered AK. Very fine used with a red Maltese cross. 4 margins. £240



**31**

SG 1 1d intense black plate 9 lettered HJ. Very fine used part black Maltese cross, leaving Queens profile clear. 4 margins. £325



**32**

SG 2/7 1d matched pair lettered NK, plate 9. Fine/very fine used. Full margins. £220



**33**

SG 1 1d intense black plate 9 lettered GF. Very fine used with a black Maltese cross. 4 fine margins. £325



**34**

SG 1 1d intense black plate 9 lettered EL. Very fine used with a full red Maltese cross. 4 large margins. £375



**35**

SG 2 1d black plate 10 lettered OE. Very fine used with a part black Maltese cross. 4 margins. £425



**36**

SG 2 1d black plate 10 lettered QC. Very fine used with a red Maltese cross cancel. 4 fine margins (SG spec A66h) CAT £1500. £475



**37**

SG 2/7 1d matched pair plate 10 lettered PE. Very fine used, full margin examples. £475



**38**

SG 3/7 1d matched pair plate 10 lettered GA. Very fine used full margin examples. £475



**39**

SG 3 1d grey-black plate eleven lettered SJ. Very fine used with a near full black Maltese cross. 4 good to huge margins CAT £4500. Scarce in this quality. £3200



PHILATELIC OPINION  
**MIKE JACKSON**  
 PHILATELIST

No. 0560

May 2019

3 COTTESMORE AVENUE MELTON MOWBRAY LEICESTERSHIRE LE13 0HY ENGLAND  
 mike@mjpublications.com

**DESCRIPTION**

1840 2d Blue lettered QB obliterated by a London No. 8 in Cross.

**OBSERVATIONS**

Comparisons with the letter positions in the *Twopence Blue Plating Guide* indicate that the stamp is from Plate 2. The stamp is obliterated by a London No. 8 in Cross, the shape of which is consistent with reference examples. Rockoff & Jackson recorded the use of the London No. 8 in Cross from 1 Apr. 1843. For the 1840 2d Blue with No. 8 in Cross, R&J recorded seven examples (including this one). The stamp has been separated from its small piece (which now appears to be smaller than in 1972; the stamp itself appears unchanged).

**PROVENANCE**

Robson Lowe, 15 Feb. 1956, 'Adams', Lot 259 (not illustrated in the auction catalogue) 'Plate II . . . QB, slightly cut into but nicely tied to small piece by No. 8 in cross cancellation, small corner crease'. [Having examined the stamp carefully under a microscope I can see no sign of a crease on the stamp in question.]

Robson Lowe, 21 Nov. 1972, Lot 264 ' . . . on small piece, the stamp cut into in places'. [Note, no mention of a crease.]

**SOURCES**

Mike Jackson, *Twopence Blue Plating Guide*, 2010.

S. David Rockoff & Mike Jackson, *Encyclopaedia of the Maltese Cross*, Vol. 1, 2006; Vol. 3, 2011.

Stanley Gibbons, *Great Britain Specialised Catalogue*, Vol. 1, 16th edn, 2011.

**CONCLUSION**

In my opinion the item is an 1840 2d Blue Plate 2 lettered QB obliterated by a London No. 8 in Cross, and is genuine. SG Spec. DS8wh.



RL, 21 Nov. 1972, Lot 264 (illustration from the catalogue).



A scan of the stamp in place on its small piece.



**40**

Number '8' in Maltese cross on 1840 2d blue plate 2 lettered QB. Full margin top & bottom into at sides. A fine clear almost complete strike of this numbered cross. One of only seven recorded examples. Ex Adams collection (spec DS8wh) CAT £14,000. Mike Jackson cert. £2200

*Mike Jackson*

MIKE JACKSON



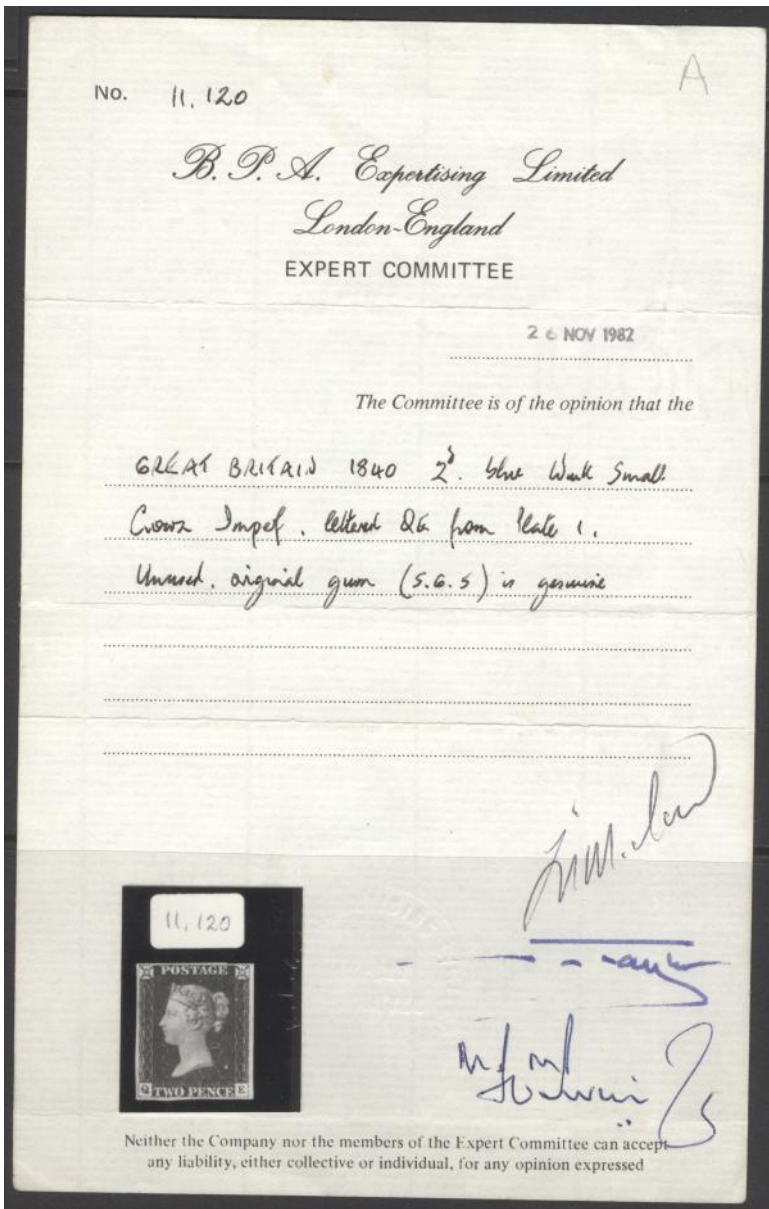
**41**

SG 4 1840 2d deep full blue pair from plate 2. Very fine used with black Maltese crosses. Full large/huge margins CAT £2500. £1275



**42**

SG 4 1840 2d deep full blue plate 2 lettered DJ. Very fine used part black Maltese cross leaving Queens profile clear. 4 fine/large margins. £575



43

SG 5 1840 2d blue plate 1 lettered QE. Fine mounted mint. 4 margins. A lovely fresh example CAT £30,000. BPA cert. £16,500



44

SG 5 1840 2d blue plate 2 lettered OB. Very fine used with a red Maltese cross. 4 close to fine margins (spec DS8f) CAT £1750. £575



45

SG 5 1840 2d blue plate 1 pair lettered QG-QH. Very fine used with upright black Maltese crosses. Full-fine margins. £1100



46

SG 5 1840 2d bright blue plate 2 lettered BH. Very fine used with a red Maltese cross. 4 full/huge margins (spec DS8f) CAT £1750. £975



47

SG 5 1840 2d blue plate 2 lettered FH. Very fine used with a '498' numeral (Manchester). 4 fine margins (spec DS5xc) CAT £1500. £875



48

SG 5 1840 2d blue plate 2 lettered MG. Very fine used with a Dorchester Town dated postmark. 4 margins CAT £7000. Mike Jackson cert. £2800



49

SG 5 1840 2d blue plate 1 lettered ND. Very fine used with a black Maltese cross. 4 fine margins. RPS cert. £575



50

SG 5 1840 2d blue plate 1 lettered LI. Superb used with a full upright red Maltese cross. 4 margins. £650



51

SG 5 1840 2d blue plate 1 pair lettered GK-GL. Fine used with rusty-red (shade) Maltese crosses. Full-fine margins. David Brandon cert. £750



52

SG 5 1840 2d blue plate 1 pair lettered SA-SB. Very fine used with upright red Maltese cross. 4 close/large margins. £1250



53

SG 5 1840 2d blue plate 1 lettered SL. Very fine used with a crisply struck red Maltese cross. 4 fine/large margins. £675



54

SG 5 1840 2d blue plate 1 lettered DC. Very fine used with a red Maltese cross. 4 fine/large margins. £675



55

SG 5 1840 2d blue plate 1 lettered NA. Superb used with a full upright red Maltese cross. 4 good to large margins. Exhibition quality. £975



56

1840 2d violet-blue plate 1 lettered JK (spec DS2). Very fine used with a red Maltese cross. 4 fine margins. Rare CAT £10,000. David Brandon cert. £5800



57

SG 6 1840 2d pale blue (worn plate) plate 1 lettered EA. Very fine used with a lightly placed red Maltese cross. 4 fine margins. David Brandon cert. £475



58

SG 7 1d red-brown plate 1b pair lettered HI-HJ. Very fine used, full margins CAT £950. £425



59

SG 7 1d red-brown plate 2 lettered IE. Very fine used with a full upright red Maltese cross. 4 large margins CAT £325. £240



60

SG 7 1d red-brown plate 2 lettered AB. Top of sheet marginal example with inscription. A lovely example. £375



61

SG 7 1d red-brown plate 2 pair lettered FA-FB. Fine used, full margins. £325



62

SG 7 1d red-brown plate 5 lettered PI. Very fine used. 4 fine margins. £85



63

SG 8i 1d red-brown lettered QA, variety inverted watermark. Very fine used with a blue postmark. 4 fine margins. £275



64

SG 8i 1d red-brown plate 173 lettered SH. Very fine used with a '78' numeral with variety inverted watermark. 4 margins CAT £250. £130



65

SG 8 1d red-brown with variety inverted 'S'. Very lightly mounted mint. 4 margins CAT £400. £150



66

SG 8 1d red-brown plate 74 lettered JF. Very fine used with '331' numeral in blue. 4 large margins. £70



67

SG 8m 1d red-brown lettered GG. Very fine used with a number '10' in Maltese cross. 4 margins CAT £320. £150



68

SG 8ti 1841 1d red-brown lettered SH. Very fine used with a Dublin Maltese cross. 4 margins CAT £125. £50



69

SG Bitg 1841 1d red-brown lettered HH. Very fine used with a Coventry Maltese cross. 4 margins CAT £750. £325



70

SG 14 1841 2d blue plate 3 lettered LL. Very fine used with a Maltese cross cancel. 4 margins CAT £275. £90



71

SG 14f 1841 2d blue plate 3 pair lettered RK-RL. Very fine used with number '12' in Maltese crosses. Full margins CAT £700. £390



72

SG 14 1841 2d blue plate 3 lettered FK. A fine fresh very lightly mounted mint example. 4 margins. RPS cert. £1650



73

SG 17 1d red-brown misperfed pair. Very fine used on small piece cancelled with Scottish Barrhead CDS's. £120



74

SG 17 1d red-brown. Mounted mint, well centred CAT £375. £170



75

SG 23a 2d blue plate 5 lettered RA. Fine used with an '865' numeral (Welwyn). Fine used CAT £350. £85



76

SG 23s 2d blue perf 14, plate 4 watermark small crown with specimen, type 2 overprint. A fine fresh mounted mint example CAT £1700. RPS cert. £750



77

SG 25 1d orange-brown. A fine fresh mounted mint example CAT £1900. £575



78

SG 34 2d blue block of 4 plate 5, watermark large crown, perf 14. Fine mounted mint CAT £16,000. BPA cert. £5500



79

SG 40 1d rose-red lettered FH. Very fine used with a Norwich, Aug 23<sup>rd</sup> 1858 CDS. £35



**80**

SG 40 1d rose-red lettered HG. Very fine used with an upright Shrewsbury, June 17<sup>th</sup> 1862 CDS. £35



**81**

SG 40 1d rose-red plate 27. Very fine used with an Edinburgh Sorting tender CDS. Rare. £130



**82**

SG 40 1d rose-red. Very fine used with a Newton Stewart, March 13<sup>th</sup> 1860 CDS. £35



**83**

SG 41 1d deep rose-red plate 43 vertical pair. Very fine used with Dublin, Sept 9<sup>th</sup> 1859 CDS's. £85



**84**

SG 43 1d rose-red plate 116. Very fine used part CDS, leaves Queens profile clear. £45



**85**

SG 43 1d rose-red plate 220. A fine fresh unmounted mint corner marginal block of 12 with plate number & inscription. £525



**86**

SG 43 1d rose-red plate 225 lettered DF. Very fine used, small part cancel, leaves Queens profile clear CAT £700. £450



**87**

SG 49 1/2d rose plate 9. Very fine used with a circular date stamp Feb 19<sup>th</sup> 1872 cancel. RPS cert when in a part CAT £500. £475



**88**

SG 53a 1 1/2d rosy-mauve, overprinted specimen. A fine fresh mounted mint example with lovely deep colour CAT £1500. £875



89

SG 57 10d deep brown. Very fine used. 4 fine margins & good deep colour. £750



90

SG 62 4d carmine, watermark small garter on blued paper. Very fine used, part numeral, leaves Queens profile clear CAT £300. £130



91

SG 62 4d pale carmine on white paper (spec J47e). Very fine used with a '466' numeral CAT £750. £325



92

SG 62 4d carmine, watermark small garter. Mounted mint CAT £7000. Scarce. £3500



93

SG 63 4d carmine, watermark medium garter on thick blued, highly glazed paper. Very fine used with a '539' numeral (Narbeth). Good deep colour & well centred CAT £400. £175



94

SG 63 4d carmine, watermark medium garter on thick, blue, highly glazed paper. Lightly mounted mint with good deep colour. Rare CAT £10,000. £4200



95

SG 63 4d carmine, overprinted specimen. A pristine unmounted mint right hand marginal example, small part inscription, well centred & fine colour. Rarely seen in this quality. £975



96

SG 64 4d pale carmine, watermark medium garter. Lightly mounted mint CAT £11,000. £6500



98

SG 64wi 4d pale carmine, ordinary thin white paper with variety medium garter, inverted watermark. A pristine unmounted mint example. Very rare in this quality CAT £14,000. £11,000



99

SG 64wi 4d pale carmine, ordinary thin white paper, watermark medium garter, variety inverted watermark. Unmounted mint, small perf imperfections & slight gum tone spots. Rare CAT £14,000. £3200



100

SG 64wi 4d pale carmine, watermarked medium on ordinary thin white paper, variety inverted watermark. Fine used. Scarce CAT £800. £325



101

SG 66i 4d rose-carmine, variety watermark inverted. Very fine used with a Belfast, Dec 1858 CDS CAT £250. £175



102

SG 66 4d rose-carmine. Very fine used with part London CDS, leaving Queens profile clear. £130



103

SG 66 4d rose-carmine. Very fine used with a Malta CDS. £85



104

SG 71 1/- deep green pair, used on small piece tied with '591' numerals & Oldham CDS CAT £600. £130



**105**

SG 73 1/- pale green. Very fine used with a Malta 1860 CDS. A lovely well centred fresh example. £200



**106**

SG 76 3d bright carmine-rose lettered DD. A fine lightly mounted mint example. Good colour & well centred CAT £1500. £875



**107**

SG 76 3d bright carmine. Very fine used with a Malta CDS, Jan 30<sup>th</sup> 1864. £150



**108**

SG 76 3d bright carmine. A very fine used CDS example. £175



**109**

SG 77 3d pale carmine-rose. A fine fresh lightly mounted mint example with perfect centring & good colour. Very scarce in this quality CAT £1200. £750



**110**

SG 79 4d bright red. Very fine used with a Glasgow, Dec 29<sup>th</sup> 1862 CDS. £130



**111**

SG 81 4d bright red. A very fresh lightly mounted mint example CAT £1000. £575



**112**

SG 83 6d deep lilac. A fine fresh lightly mounted mint example being very well centred & with good deep colour CAT £1800. David Brandon cert. £1100



**113**

SG 84 6d lilac. Very fine used Glasgow, April 19<sup>th</sup> 1864 CDS part '159' numeral. £65



**114**

SG 86 9d bistre. Very fine used part numeral, leaves Queens profile clear. Good colour & well centred CAT £325. £150



**115**

SG 86 9d bistre lettered ML. Lightly mounted mint with good centring for this issue CAT £3500. £1650



**116**

SG 87 9d straw. Very fine used, small part CDS, leaves Queens profile clear CAT £325. £275



**117**

SG 87 9d straw. Fine used with a '131' Edinburgh Brunswick star cancel. £120



**118**

SG 87 9d straw lettered GK. A fine fresh lightly mounted mint example, well centred CAT £2000. £1200



**119**

SG 87i 9d straw, variety inverted watermark. Very fine used with a '221' numeral & part Leith CDS CAT £450. £220



**120**

SG 90 1/- green. Very fine used with a Dublin, Dec 10<sup>th</sup> 1862 'open' CDS. £275



**121**

SG 90 1/- green. A fine fresh mounted mint example. Good colour & well centred CAT £2500. £875



**123**

SG 94 4d vermilion plate 10 lettered QC. Unmounted mint, good colour & well centred CAT £700. £575



**124**

SG 94 4d vermilion plate 12. A fine fresh lightly mounted mint example. £240



**125**

SG 94 4d vermilion plate 12 pair. Very fine used with '1036' telegraphic CDS cancels. £85



**126**

SG 95 4d deep vermilion plate 12, variety inverted watermark. Lightly mounted mint CAT £500. £240



**127**

SG 98 9d straw (plate 4) watermark emblems. A scarce CDS example with good colour CAT £500. £420



**128**

SG 98 Great Britain 1866. 9d straw abnormal, plate 5, watermark emblems. A fine fresh example lettered MG, with gum. Rare. RPS cert 1955 CAT £20,000. £13,500



**129**

SG 103 3d rose plate. Very fine used with a Malta CDS, March 31<sup>st</sup> 1868. £150



**130**

SG 103 3d rose plate 5. Very fine used with an upright Dublin CDS, Jan 15<sup>th</sup> 1869. £65



**131**

SG 103 3d rose plate 6. Very fine used with a Malta, Aug 5<sup>th</sup> 1871 CDS. £65



**132**

SG 102 3d deep rose plate 7. Very fine used with a Colne CDS, July 5<sup>th</sup> 1872. £40



**133**

SG 103 3d rose-red plate 8. Very fine used with a Lincoln, June 3<sup>rd</sup> 1872 CDS. £40



**134**

SG 103 3d rose-red plate 8 block of 4. Very fine used with Water St Liverpool CDS's, Oct 21<sup>st</sup> 1872. £175



**135**

SG 103 3d rose-red plate 8 block of 4. Very fine used with a Carrigoholt, Dec 21<sup>st</sup> 1872 CDS's. £200



**136**

SG 104 6d lilac. Very fine used with an upright '62' Belfast diamond cancel CAT £95. £45



**137**

SG 108 6d dull violet plate 8 block of 4. Very lightly mounted mint CAT £2800. £1500



**138**

SG 109 6d mauve plate 8. A superb very lightly mounted mint example. Very fresh, well centred & good colour CAT £600. £425



**139**

SG 109 6d mauve plate 9. Very fine used with a blue telegraphic CDS. £120



**140**

SG 109 6d mauve plate 8. Very fine used on small piece with a 'A25' numeral, Malta June 19<sup>th</sup> CDS alongside. £85



**141**

SG 109 6d mauve plate 9. Very fine used with a lightly placed Liverpool Lime St CDS, Feb 24<sup>th</sup> 1872. £45



**142**

SG 110 9d straw. Very fine used with an upright crisply struck Matlock, Bath, May 15<sup>th</sup> 1872 CDS. RPS cet. £275



**143**

SG 112 10d red-brown. A fine fresh mounted mint example CAT £2250. RPS cert. £1100



**144**

SG 112 10d red-brown. Very fine used with a 'A25' (Malta) cancel. Good deep colour & well centred. £130



**145**

SG 112 10d red-brown. Very fine used with Slough CDS's, Sept 1872. Well centred & good colour. £175



**146**

SG 112 10d red-brown. Very fine used with an upright Valpariso paid CDS, Nov 4<sup>th</sup> 1874. £200



**147**

SG 112s 10d red-brown, overprinted specimen. Fine mounted mint. Good colour & centring CAT £500. £275



**148**

SG 114 10d deep red-brown. Very fine used with an Irish, Kanturk CDS, Aug 3<sup>rd</sup> 1872. Nice deep colour. £425



**149**

SG 115 1/- deep green plate 4. A fine fresh mounted mint example CAT £850. £375



**150**

SG 117 1/- green plate 4. Very fine used with 'A25' Malta cancel. £25



**151**

SG 117 1/- green plate 5 vertical pair. Very fine used with a single Ipswich, Feb 2<sup>nd</sup> 1872 CDS. £85



**152**

SG 117 1/- green plate 5 corner marginal example. Very fine used with a '152' telegraphic CDS. £75



**153**

SG 117 1/- green plate 6. Very fine used with a Horncastle CDS. £25



**154**

SG 118 2/- dull blue variety inverted watermark. Good used. Very scarce CAT £950. £275



**155**

SG 118s 2/- dull blue, overprinted specimen. A fine fresh mounted mint example with good colour CAT £600. £375



**156**

SG 118 2/- dull blue. Very fine used 'C' used in Constantinople. £85



**157**

SG 118 2/- dull blue. Very fine used with a Royal Glasgow exchange CDS, May 2<sup>nd</sup> 1872. £130



**158**

SG 119 2/- deep blue. A superb example cancelled by a Skipton, Oct 28<sup>th</sup> 1872 CDS. Very fresh & lovely deep colour. £200



**159**

SG 119 2/- deep blue. Very fine used with a concentric rings cancel. £150



**160**

SG 120b. 1867. 2/- milky blue plate 1 lettered JA. A very fresh lightly mounted mint example CAT £24,000. Basel & Brandon cert. Rarely seen in this quality. £12,500



**161**

SG 120b 2/- milky blue. Very lightly cancelled part numeral & CDS CAT £1500. £375



**162**

SG 122a 6d chestnut, overprinted specimen, type 6. Fine mounted mint CAT £325. £175



**163**

SG 122 6d deep chestnut. Very lightly mounted mint CAT £750. £375



**164**

SG 123 6d pale buff plate 12. Very fine used with part Malta CDS & numeral. £95



**165**

SG 123 6d pale buff plate 12. Very fine used with part Malta CDS & numeral. £95



**166**

SG 125 6d grey. A fine fresh lightly mounted mint example. Good colour & centring CAT £1200. £675



**167**

SG 126 5/- rose plate 1 vertical pair. Very fine used with Queenstown, Jan 5<sup>th</sup> 1872 CDS's. A scarce multiple CAT £1000. £525



**168**

SG 126 5/- rose plate 1 lettered BI. Superb used with a part London CDS, leaves Queens profile clear. Good deep colour & well centred CAT £500. £450



**169**

SG 127. 1874. 5/- pale rose plate 2, watermark Maltese cross. A fine fresh mounted mint example CAT £10,000. David Brandon cert. £3200



**170**

SG 127 5/- pale rose plate 1 top of sheet pair. Very fine used with Liverpool Water St CDS's, Nov 16<sup>th</sup> 1870. Scarce multiple CAT £10,000. £575



**171**

SG 127 5/- pale rose plate 2. Very fine used with an Edinburgh, Feb 12<sup>th</sup> 1875 CDS. £475



**172**

SG 128 10/- greenish-grey. Very fine used with an Edinburgh CDS. Good colour & well centred CAT £2250. £1450



**173**

SG 128 10/- greenish-grey, watermark Maltese cross lettered AE from the top rows. A fresh mounted mint example with good colour, some small defects on top right side, irregular perms & slight soiling. Rare CAT £40,000. David Brandon cert. £4500



**174**

SG 129 £1 brown-lilac, overprinted specimen. A fine fresh very lightly mounted mint example CAT £6000. £3800



**175**

SG 130 5/- rose plate 4 watermark large anchor on blued paper. Very fine used with a Charles St Haymarket CDS, March 20<sup>th</sup> 1884. Good colour & well centred CAT £2500. £1500



**176**

SG 132 £1 brown-lilac, watermark anchor, overprinted specimen. A fine fresh lightly mounted mint example. Lovely deep colour & with good centring CAT £11,000. £7500



**177**

SG 135 10/- greenish-grey. Very fine used with a Liverpool CDS, Aug 29<sup>th</sup> 1883. Good colour & well centred. £3200



**178**

SG 136 £1 brown-lilac. Very fine used with a Glasgow stock exchange, June 4<sup>th</sup> 1883 CDS. Good colour & well centred  
CAT £6500. £4800



**179**

SG 137 £5 orange. Fine used with a registered Threanneedle oval, 20<sup>th</sup> July 1899. Good colour & well centred.  
£1650



**180**

SG 138 2½d rosy-mauve plate 1 on blued paper. Very lightly mounted mint. Good colour & well centred  
CAT £750. £425



**181**

SG 150 1/- green plate 13. A fine fresh mounted mint example  
CAT £500. RPS cert. £375



**182**

SG 150 1/- green plate 8. A fine fresh mounted mint example. Well centred & good colour  
CAT £650. £320



**183**

SG 148 1/- deep green plate 8. Very fine used with a St Thomas, Jan 14<sup>th</sup> 1874 CDS. £85



**184**

SG 150 1/- green plate 11. Very fine used with a part Valpariso CDS, leaves Queens profile clear. £120



**185**

SG 150 1/- green plate 13. Very fine used with a London, March 30<sup>th</sup> 1880 CDS. £90



**186**

SG 150 1/- green plate 13. Very fine used lettered FK, neatly cancelled by a Guernsey CDS, Feb 22 1879. £120



**187**

SG 150 1/- green plate 13 imprimatur lettered TE. A fine fresh mounted mint example. 4 good to huge margins  
CAT £3500. £1600



**188**

SG 151 1/- orange-brown plate 13. Very fine used with a part Greytown (Nicaragua) CDS, leaving Queens profile clear. £375



**189**

SG 151 1/- orange-brown plate 13. A fine fresh mounted mint example  
CAT £3000. £1650



**190**

SG 152 4d vermilion. A pristine Post Office fresh unmounted mint example, overprinted specimen. Exceptional quality  
CAT £400. £325



**191**

SG 152 4d vermilion plate 15. Very fine used with a Southport CDS, April 14<sup>th</sup> 1876. Good deep colour  
CAT £300. £220



**192**

(SG 152) 1872. 4d colour trials x4. Light sage, turquoise-blue, grey-lilac & pale red-brown. All 4 margin examples. Mounted/lightly mounted mint CAT £1000. £375



**193**

SG 153 4d sage-green plate 16 lettered CF. Lightly mounted mint with good colour CAT £850. BPA cert. £575



**194**

SG 153 4d sage-green plate 15. A pristine very lightly mounted mint example CAT £950. David Brandon cert. £575



**195**

SG 153 4d sage-green plate 16. Very fine used with a Manchester CDS, 29<sup>th</sup> Sept 1879. £200



**196**

SG 156 8d orange. Very fine used with an upright London CDS, June 21<sup>st</sup> 1878 CAT £350. £220



**197**

SG 160 4d grey-brown plate 18. Superb used with an upright Malta CDS, Nov 30<sup>th</sup> 1883. £85



**198**

SG 160 4d grey-brown plate 18 overprinted specimen. Very lightly mounted mint. Good colour & well centred. £175



**199**

SG 157 2½d blue plate 22. Very fine used with a London 1<sup>st</sup> Oct 1883 CDS. £15



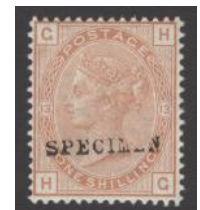
**200**

SG 161s 6d grey plate 18, overprinted specimen. Fine mounted mint & well centred. £190



**201**

SG 161 6d grey plate 18. Very fine used with Edinburgh CDS's, May 18<sup>th</sup> 1882. £45



**202**

SG 163 1/- orange-brown plate 13, overprinted specimen, leaving Queens profile clear. Lightly mounted mint CAT £350. £240



**203**

SG 163 1/- orange-brown plate 14. Very fine used with a Gloucester, Oct 24<sup>th</sup> 1882 CDS. £120



**204**

SG 163 1/- orange-brown plate 13. Lightly mounted mint. £325



**205**

SG 175 2/6 lilac on blued paper. Very fine used with an upright Clitheroe, Sept 19<sup>th</sup> 1883 CDS CAT £1200. David Brandon cert. £975



206

SG 176 5/- rose on blued paper. A very fine used example cancelled with a Greenock CDS, Dec 22<sup>nd</sup> 1885 CAT £2500. David Brandon cert. £1650



207

SG 177 10/- ultramarine on blued paper. Superb used with a crisply struck Glasgow, July 22<sup>nd</sup> 1885 CDS. Very scarce in this quality CAT £7000. David Brandon cert when in a stirp of 3. £5500



208

SG 177a. 1883-84. 10/- cobalt on blued paper, overprinted specimen. A fine fresh very lightly mounted mint example (barely a trace of hinging) CAT £5500. £2800



209

SG 179 2/6 deep lilac. Fine unmounted mint with good centring CAT £825. £650



210

SG 179 2/6 deep lilac. Very fine used with a Liverpool, Nov 26<sup>th</sup> 1893 CDS. Good deep colour CAT £125. £85



211

SG 180 5/- rose. Very fine used with a Hull CDS, April 12<sup>th</sup> 1892 CAT £130. £90



212

SG 183 10/- ultramarine. Very fine used with full Threadneedle registered oval, 2<sup>nd</sup> March 1900 CAT £375. £150



213

SG 183a 10/- pale ultramarine. A fine fresh unmounted mint example. Good colour & well centred. £1650



214

SG spec K14t 10/- ultramarine on white paper, variety overprint cancelled type 14. Fine unmounted mint CAT £6000+. RPS cert. £3200



215

SG 186s £1 brown-lilac, watermark three orbs, overprinted specimen. A very fine very lightly mounted mint example. Lovely deep colour & well centred. RPS cert when in a pair CAT £6800. £4200



216

SG 188 1 1/2d lilac. A very fresh extremely lightly mounted mint example CAT £125. £110



217

SG 192 4d dull green. A fine fresh unmounted mint example with good deep colour. £450



218

SG 194 6d dull green. A fine fresh unmounted mint example with good colour. £475



219

SG 203 3d deep purple/yellow. Very fine used with a Harrow, Nov 23<sup>rd</sup> 1895 CDS. £10



220

SG 212s £1 green, overprinted specimen. A fine fresh unmounted mint example CAT £1100. £875



221

SG 197-214. 1887-92. 1/4d to 1/- set of 14. Unmounted mint CAT £1000. £375



222

SG 215-263. 1/4d to 5/- plate proof set. All fine/fresh full margin examples. £425



223

SG 215-257. 1902. 1/4d to 1/- set of 15 on ordinary paper. Fine unmounted mint. £480



**224**

SG Z15wi 1902-10. 1/2d dull blue-green variety inverted watermark. Fine unmounted mint CAT £2500. Hendon cert. Very scarce. £1650



**225**

SG spec M2(2)ac 1/2d yellowish-green with St Andrews cross, watermark crown inverted. Fine unmounted mint. Wenvoe cert. £130



**226**

SG spec M2(1)ac 1/2d pale yellowish-green with St Andrews cross, watermark inverted. Pristine unmounted mint CAT £190. Wenvoe cert. £130



**227**

SG spec M2(2)c 1/2d yellowish-green with St Andrews cross. Very lightly mounted mint CAT £190. Wenvoe cert. £130



**228**

SG spec M2(2)ac 1/2d yellowish-green with St Andrews cross, watermark crown inverted. Wenvoe cert. £130



**229**

SG spec M2(2)c 1/2d yellowish-green with St Andrews cross, watermark cross. Pristine unmounted mint. Wenvoe cert. £130



**230**

SG spec M2(1)ac 1/2d pale yellowish-green with St Andrews cross, watermark crown inverted. Pristine unmounted mint CAT £190. Wenvoe cert. £130



**231**

SG 230s 2 1/2d ultramarine, overprinted specimen. Lightly mounted mint CAT £125. £75



**232**

SG 242 5d dull purple & blue. Superb used with an upright Newport, Isle of Wight CDS, Dec 8<sup>th</sup> 1905. £15



**233**

SG Z31 7d grey-black. Very fine used in Ascension CAT £475. £275



**234**

SG 254 10d dull purple & carmine. Very fine used with a Cockermouth CDS. £30



**235**

SG 255 spec M43(4) 10d slate-purple & deep glossy carmine. Good used CAT £1500. Scarce. £275



**236**

SG 256 10d dull purple & scarlet Spec M44(1). A fine fresh very lightly mounted mint example. Wenvoe cert. £65



**237**

SG 264 5/- deep bright carmine. A fine fresh unmounted mint example with good deep colour & well centred CAT £900. £675



**238**

SG 265 10/- ultramarine. A fine fresh lightly mounted mint example with good colour & centring CAT £1000. £420



**239**

SG 265 10/- ultramarine. Very fine used part CDS, leaving Kings profile clear. £240



**240**

SG 266 £1 dull blue-green. Very fine used with an upright Stafford, March 22<sup>nd</sup> 1911 CDS. £475



**241**

SG 268 ½d dull green. A remarkable misperf block of 4. Unmounted mint. £375



**242**

SG 275a 1d aniline-rose. Very fine used with an 1913 Aberdeenshire CDS CAT £180. £120



**243**

SG 295 6d Royal purple. Very fine used CDS example. £50



**244**

SG 306 9d red-purple & light blue. Spec M41(1). A fine fresh unmounted mint example. Wenvoe cert. £95



**245**

SG 318. 1911-13. 5/- carmine. A pristine unmounted mint example CAT £950. £675



**246**

SG 319 10/- blue. A pristine very lightly mounted mint example. Good colour & well centred CAT £1100. £575



**247**

SG 320 £1 deep green. Very fine used with a 1913 Guernsey CDS. Good deep colour CAT £650. £450



**248**

SG 320 £1 deep green. A fine fresh unmounted mint marginal example with good deep colour CAT £3000. £2100



**249**

SG 266 £1 dull blue-green. A fine fresh very lightly mounted mint example CAT £1500. £875



**250**

SG 262 spec M49(2) 2/6 dull purple. A fine fresh very lightly mounted mint example. £190



251

1936 Edward VIII. 1/2d-2 1/2d imprimatur set of 4. Fine unmounted mint (each with NPM back stamp). Also a colour essay for the 2 1/2d value unmounted mint, minor gum bend with BPA cert. scarce. £3500



252

SG 462-466wi. 1937 Dark colours 1/2d-2 1/2d set of 5. £60



253

SG 476-478c. 1939-48 High values 2/6-£1 set of 6. Fine unmounted mint CAT £425. £190



254

(SG L229) 1887. 3/- colour trial in slate-blue marginal imperf block of 8 with inscription. 7 stamps being fine unmounted mint CAT £1040. £550



255

(SG L229) 1887. 3/- colour trial block of 4 in slate-blue from bottom of sheet, overprinted specimen. Imperf, full fine margins. Fine fresh unmounted mint condition CAT6 £520. £280



256

(SG L229) 1887. 3/- colour trial in slate-blue. Imperf overprinted specimen block of 4 from top of sheet with full fine margins. Fine fresh unmounted mint condition CAT £520. £280



**257**

(SG L229) 1887. 3/- colour trial in slate-blue. Imperf overprinted specimen marginal example CAT £130. £95



**258**

SG O24 1/- dull green & carmine I.R. official. Very fine used CAT £750. Wenvoe cert. £375



**259**

SG O22 2½d ultramarine I.R. official. Scarce block of 4. Fine used CAT £1400. Wenvoe cert. £575



**260**

SG O22 2½d ultramarine I.R. official. Very fine used CAT £225. Wenvoe cert. £130



**261**

SG O85 2½d Board of education. Very fine used with a George St Gloucester, June 3<sup>rd</sup> 1902 CDS. Wenvoe cert CAT £250. £190



**262**

SG O68c,d. 1/- dull green GOVT parcels variety dot to left of 'T'. very fine used with a Thirsk CDS CAT £500. Wenvoe cert. £325



**263**

SG O18 6d purple/rose-red I.R. official. Scarce strip of 4. Fine used with Manchester registered cancels. Wenvoe cert. £220



**264**

SG O64 1/- orange-brown plate 13 GOVT parcels. Very fine used. £120



**265**

SG O71 4½d green & carmine GOVT parcels. A fine fresh unmounted mint example. £325



**266**

SG 331 1d rose-pink Spec N8(8). Very lightly mounted mint, light gum crease unseen at face CAT £125. Wenvoe cert. £30



**267**

SG 331 1d rose-pink Spec N8(8). Unmounted mint marginal example, faint gum crease unseen at face. Wenvoe cert CAT £225. £50



**268**

SG 333 1d aniline-scarlet with inverted watermark Spec N9(4)a. fine fresh unmounted mint example. Wenvoe cert. £325



**269**

SG 333 1d aniline-scarlet Spec N9(4). A fine fresh unmounted mint example CAT £375. Wenvoe cert. £225



**270**

SG 338 ½d myrtle-green Spec N4(4). A fine fresh unmounted mint example CAT £250. £125



**271**

SG 346 Spec N6f ½d green imperforate. A fine fresh unmounted mint example. 4 fine margins CAT £250. £120



**272**

SG 349. 1d scarlet imperforate (spec N13(l) e). A fine fresh unmounted mint marginal example. Full fine margins CAT £225. £110



**273**

SG 349. 1d bright scarlet, watermark sideways Spec N13(2)d. A fine fresh unmounted mint example CAT £325. £175



**274**

SG 351-396. 1912-24. George V Royal cypher set of 15. 1/2d to 1/-. Fine unmounted mint CAT £425. £190



**275**

SG 397. 1913. 1/2d bright green, watermark Royal cypher multiple. A fine fresh unmounted mint example with inverted watermark CAT £1200. Very scarce. Wenvoe cert. £750



**276**

SG 397/398. 1913. 1/2d & 1d watermark Royal cypher (multiple). Very lightly mounted mint CAT £320. Wenvoe certs. £240



**277**

SG 408 2/6 sepia 'seal' brown (De La Rue printing). A fine fresh unmounted mint example variety (Kissa print) CAT £600. Wenvoe cert. £375



**278**

SG 408 2/6 sepia-brown 'seal brown' watermark single cypher reversed (spec N64, 13g). Fine unmounted mint CAT 1800. Wenvoe cert. £750



**279**

SG 417 10/- dull grey 1918-19. A fine fresh very lightly mounted mint example with good colour & very well centred CAT £425. £275



**280**

SG 450-452. 1934. 2/6 to 10/-. A pristine very lightly mounted mint set CAT £500. £220



**281**

SG 451 5/- bright rose-red. A very fine used CDS example, leaving Kings profile clear CAT £65. £30

Ebay/hipstamp- steveallen777

Website-  
[www.stevenallenstamps.com](http://www.stevenallenstamps.com)



**Email: [Steveallen-orders@live.co.uk](mailto:Steveallen-orders@live.co.uk)**  
**Overseas Tel: +44(0)2392 253 133**

Cheques made payable to British & Colonial Stamps LTD

British & Colonial Stamps Ltd.  
Cutlers Farm Barn  
Newlands Lane  
waterlooville  
PO7 6TN

Barclays ,  
81a London Road,  
Waterlooville, PO7 7ER  
IBAN: GB53 BARC 2069 3423 7460 54  
SWIFT IBAN BIC: BARCGB22  
ACCOUNT NUMBER: 23746054  
BRANCH SORT CODE: 20-69-34

**PayPal**

