

BRITISH AND COLONIAL STAMPS

NOVEMBER GB PART 2



186

10% DISCOUNT ON ORDERS OVER £100
15% DISCOUNT ON ORDERS OVER £500

EMAIL; STEVEALLEN-ORDERS@LIVE.CO.UK
TEL; 02392 253 133



1

SG 3 1d grey-black plate 1a, worn plate lettered ED. Superb used on small piece tied by a neat red Maltese cross with 'T.P Oxford St' cancel above. £325



2

SG 2 1d black plate 1b lettered KD. Very fine used with a black Maltese cross. 4 large margins. £375



3

SG 2 1d black plate 1b lettered CC. Very fine used with a full upright red Maltese cross. 4 margins. £375



4

SG 1 1d intense black plate 2 lettered BH. Very fine used with a black Maltese cross. 4 fine margins. £420



5

SG 2/7 1d plate 2 matched pair lettered PJ. Very fine used, full margins. 1d red has small reverse thin. £325



6

SG 1 1d intense black plate 2 lettered MI. Superb used with a full upright black Maltese cross. 4 margins. £375



7

SG 1 1d intense black plate 3 lettered AH. A fine fresh lightly mounted mint example. 4 margins CAT £17500. David Brandon cert. £4500



8

SG 3 1d grey-black plate 3 lettered HI. Very fine used with a crisply struck orange/red Maltese cross/ 4 fine margins. £375



9

SG 2 1d black plate 4 lettered NB-NC. Very fine used pair, red Maltese crosses. Full margins close to huge. David Brandon cert. £750



10

SG 2 1d black plate 4 lettered IG. Superb used with a crisply struck red Maltese cross. 4 margins. RPS cert. £425



11

SG 2 1d black plate 4 lettered NL. Superb used with a deep red Maltese cross. 4 large margins. RPS cert. £425



12

SG 2 1d black plate 4 lettered IB. Very fine used with a 'double lined' Maltese cross in vermilion. 4 margins. £425



13

SG 2 1d black plate 4 lettered IH. Very fine used part red Maltese cross, leaves Queens profile clear. 4 margins. £275



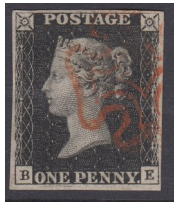
14

SG 1 1d intense black plate 5 lettered FB. Very fine used with a red Maltese cross. 4 good to large margins. £275



15

SG spec AS253a 1840 1d black imperf plate 5 lettered TC. Very fine used with 1844 type obliteration. 4 good to large margins CAT £2000. RPS cert. £875



16

SG 2 1d black plate 5 lettered BE. Very fine used with a part orange/red Maltese cross, leaves Queens profile clear. 4 margins. £275



17

SG 2 1d black plate 6 lettered NC. Very fine used part red Maltese cross. 4 fine margins. £375



18

SG 2 1d black plate 6 lettered IH. Very fine used with a full upright red Maltese cross. 4 margins. £325



19

SG 3 1d grey-black plate 6 lettered HL. Very fine used with an upright black Maltese cross. 4 fine margins. £325



20

SG 2 1d black plate 7 lettered PE (double lettered 'E')(SG spec AS46b). Lightly mounted mint CAT £14000. David Brandon cert. £5500



21

SG 3 1d grey-black plate 7. Very fine used with a black Maltese cross. 4 good to large margins. £325



22

SG 8 1d black plate 8 lettered OI. Very fine used with a deep red Maltese cross. 4 fine margins. £275



23

SG 1 1d intense black plate 8 lettered CI. Very fine used with a full red Maltese cross. 4 fine margins. £325



24

SG 2 1d black plate 10 lettered OE. Very fine used with a part black Maltese cross. 4 margins. £425



25

SG 5 1840 2d blue plate 1 horizontal strip of 3 lettered LE-LH. Very fine used with black Maltese crosses. Full margins. £1500



26

SG 4 1840 2d deep full blue plate 1 lettered GH. A superb example cancelled with a finely struck black Maltese cross. 4 fine margins. A lovely example. £875



27

SG 4 1840 2d deep full blue plate 1 lettered TB. Very fine used with an upright black Maltese cross. 4 fine margins. £675



28

SG 5 1840 2d blue plate 2 lettered NL. Superb used with a complete upright red Maltese cross. 4 good/huge margins. SG spec (DS8f) CAT £1750. Very scarce in this quality. £1200



29

SG 5 1840 2d blue plate 2 lettered TC. Very fine used with a deep red Maltese cross. 4 margins (spec DS8f) CAT £1750. £850



30

SG 4 1840 2d deep full blue plate 2 lettered TJ. Very fine used bottom marginal example with trace of inscription. £450



31

SG spec BSaa 1d red-brown plate 150 lettered MK. Treasury roulette. Very fine used with a London '27' numeral. A lovely example. RPS cert. £3750



32

SG 12 1d orange-brown plate 157 lettered EC. Very fine used with a 'registered' cancel in red. 4 good to huge margins. A line engraved rarity. RPS cert. £3000



33

SG 8 1d red-brown plate 20 lettered AB & BA. Used on small piece, cancelled with a single Dorchester CDS, May 31st 1842. Both stamps with 4 margins. Scarce. £850



34

SG 8 1d red-brown plate 21 lettered IA. Very fine used on small piece, cancelled with a Dorchester CDS, May 9th 1842. 4 margins CAT £950. £475



35

SG 8 1d red-brown lettered BJ. Very fine used with a Brighton Maltese cross. 4 margins CAT £375. £175



36

SG 8 1d red-brown plate 33 lettered SL. Very fine used with a Dublin Maltese cross. 4 good to huge margins. £85



37

SG 8ti 1d red-brown plate 36 lettered BL. Very fine used with a Dublin Maltese cross. 4 margins CAT £125. £75



38

SG 8 1d red-brown plate 37 lettered HD. Very fine used with a Cork Maltese cross. 4 fine margins. RPS cert. £280



39

SG 8m 1d red-brown pair. Very fine used with a number '1' in Maltese crosses. Full margins CAT £360. £275



40

SG 8m 1d red-brown plate 38 lettered RB. Very fine used with an upright number '9' in Maltese cross. 4 fine-large margins. £130



41

SG 8 1d red-brown lettered AF variety on thicker lavender tinted paper. Top marginal example with inscription. 4 margins. RPS cert. £1650



42

SG 12 1d orange-brown plate 147 strip of 3. Very fine used with '573' numerals (North Shields). Full margins, good to huge CAT £825. £325



43

SG 12 1d orange-brown plate 174 lettered IH. Very fine used with a neat '120' numeral (Bridgend). 4 margins (spec B2/3). RPS cert. £240



44

1d imprimatur plate 35 lettered AI. A top marginal example with inscription. Fine margins. £775



45

1d imprimatur plate 73 lettered AL corner marginal example with plate number. 4 fine margins. Scarce (Ex Chartwell). £2700



46

1d imprimatur plate 110 lettered HL. Full right hand sheet marginal example with inscription. £850



47

SG 10 1d deep red-brown plate 163 lettered QJ-QK. Very fine used pair with crisp '498' Manchester numerals. Tiny scissor cut in top margin between stamps. Stunning colour. RPS cert. £90



48

1d imprimatur plate 178 lettered AA corner marginal example with plate number. 4 margins. Very fresh. Scarce in this quality. £2900



49

1d (SG 17) imprimatur plate 201. Full top sheet marginal with inscription. 4 fine margins (spec C1). £875



50

SG 14f 1841 2d blue plate 3 lettered JB cancelled with a number '5' in Maltese cross. 4 good to huge margins CAT £850. £525



51

SG 16b 1d red-brown die 1, alphabet 1, perf 16 by Henry Archer, plate 100. Very fine used (spec CE2). RPS cert. £525



52

SG 17 1d red-brown plate 195 lettered BG. Very fine used with a '27' London numeral. Nice deep colour & well centred. £30



53

SG 19wi 2d blue plate 4 lettered LG variety inverted watermark. Very fine used with a London '21' numeral CAT £325. £220



54

SG 20a 2d blue plate 5 lettered DB. Very fine used with a green Irish diamond ('186' Dublin)(spec F4.ud). £375



55

SG 21 1d red-brown lettered BK. Very fine used with a lightly placed number '2' London numeral. £45



56

SG 21 1d red-brown plate 21 lettered HJ. Fine mounted mint. Tiny gum thin (spec C4/1). RPS cert. £175



57

SG 23 2d blue plate 4 lettered FD. A very fine used scarce CDS example. RPS cert. £320



58

SG 29a 1d imperf plate 25. Neals steam press experiment on ungummed paper. 4 fine margins. Very fresh and with no creasing (most being creased)(spec C8/1.h) CAT £3000. RPS cert when in a strip of 4. £2200



59

SG 34 2d blue plate 5 lettered FH. Very fine used with an upright Liverpool 1856 spoon CDS. Well centred and very fresh. £120



60

SG 39 1d pale rose-red plate 62 lettered GB. Fine unmounted mint CAT £110. £90



61

SG 40 1d rose-red block of 4 plate 59. Fresh mint, 3 stamps being unmounted (spec C10/1). £140



62

SG 41 1d deep rose-red block of 4, used (contrary to regulations) with two superb Irish '306' (Listowel Kerry) diamonds. Scarce in this quality. £290



63

SG 43 1d rose-red plate 163 corner marginal block of 8 with plate number and inscription CAT £560+. £550



64

SG 47s 2d deep blue plate 15 lettered GI overprinted specimen, type 9. Lightly mounted mint CAT £250. £175



65

SG 55 1/- green. Very fine used with a '156' numeral (Chapel Le Frith). 4 good to large margins CAT £1000. £550



66

SG 66 4d rose-carmine. A fine lightly mounted mint example. Very fresh and with good deep colour CAT £2100. £875



67

SG 66 4d rose-carmine. Very fine used with an Arbroath, June 25th 1860 CDS. £130



68

SG 68 6d lilac. Superb used with an upright Liverpool CDS, 27th Sept 1862. £240



69

SG 70 6d pale lilac. Superb used with an upright Dublin CDS, May 2nd 1860. £175



70

SG 72 1/- green. Very fine used, small part numeral CAT £350. £90



71

SG 76 3d bright carmine-rose. Fine mounted mint, good colour & well centred CAT £2700. £875



72

SG 77 3d pale carmine-rose. Superb used with a Kendal, Nov 22nd 1864 CDS. Good colour & well centred. £275



73

SG 86b 9d bistre variety on thick paper. Fine used with a Scots '159' Glasgow numeral CAT £500. £175



74

SG 90a 1/- green variety 'K' in circle. Very fine used in Constantinople. Rare. £1250



75

SG 93 4d dull vermilion plate 8. Very fine used with a Malta CDS, Dec 11th 1866. £80



76

SG 94 4d vermilion plate 14 lettered SF. A fine unmounted mint example CAT £775. £450



77

SG 94 4d vermilion plate 11. Very fine used with an almost upright Malta CDS, June 9th 1874. £95



78

SG 94 4d vermilion plate 13. A fine fresh lightly mounted mint example with good centring CAT £650. £250



79

SG 98 9d straw, watermark emblems. Very fine used with a full strike Irish diamond '62' Belfast CAT £600. £175



80

SG 100 1/- deep green. Very fine used with a '62' Irish Belfast diamond cancel CAT £300. £75



81

SG 103 3d rose plate 6. Lightly mounted mint. Good deep colour & well centred CAT £550. £250



82

SG 103 3d rose plate 6. Very lightly mounted mint. Good colour & perfect centring CAT £550. £290



83

SG 103 3d rose plate 8. Superb used with an upright 'Greetland' CDS, Sept 23rd 1872. £45



84

SG 104 3d rose plate 10. Very fine used with a '1221' telegraphic cancel. Good colour & centring CAT £150. £85



85

SG 104 6d lilac (plate 6). Very fine used with a Malta CDS. £130



86

SG 105 6d deep lilac. Very fine used with an 'A26' Gibraltar cancel. £85



87

SG 109 6d mauve plate 9. Fine unmounted mint, well centred. Lovely deep colour. £650



88

SG 109 6d mauve plate 8. Very fine used on small piece cancelled with a Malta CDS, Jan 25th 1870. £130



89

SG 109 6d mauve plate 9 pair. Very fine used with crisp Edinburgh CDS's, Aug 11th 1871. £150



90

SG 110 9d straw. Very fine used with a Galway CDS. £240



91

SG 110 10d straw. Superb used with a Douglas Isle of Man CDS, Nov 23rd 1872. £240



92

SG 110 9d straw. Very fine used with a Rugby CDS, June 15th 1872. £220



93

SG 114 10d deep red-brown. Very fine used with a Malta CDS. Good deep colour. £240



94

SG 117 1/- green plate 4. Very fine used with an upright Roches point CDS, March 24th 1871. £65



95

SG 117 1/- green plate 4. Very fine used with a Nottingham CDS, July 3rd 1871. £60



96

SG 117 1/- green plate 5 lettered MA. A fine fresh mounted mint example CAT £800. £240



97

SG 117 1/- green plate 6 top corner marginal strip of 3. Very fine used with Mark Lane CDS's, Dec 11th 1872. £220



98

SG 117 1/- green plate 5. A very fine used corner marginal example with inscription, cancelled with a Falmouth CDS, May 31st 1872. £50



99

SG 117 1/- green plate 6. Very fine used with a Maryborough CDS, July 17th 1872. £30



100

SG 117 1/- green plate 7. Very fine used with an upright Blackpool CDS, July 25th 1873. £60



101

SG 117 1/- plate 7. Very fine used. A crisp Manchester stock exchange steel CDS. Lovely quality. RPS cert. £90



102

SG (117) 1/- stock exchange forgery plate 5. Fine used on small piece with a stock exchange CDS, July 26th 1872. £375



103

SG 118 2/- dull blue. Very fine used with an 'A25' (Malta) cancel. £150



105

SG 119 2/- deep blue. Superb used with a St Leonards on Sea CDS, Aug 3rd 1872. £240



106

SG 119 2/- deep blue. Very fine used with a concentric rings cancel. £150



107

SG 122a 6d 'chestnut' plate 11 block of 6. Very fine used with Mark Lane, June 14th 1872 CDS's. A scarce multiple. £675



108

SG 122a 6d chestnut plate 11 horizontal pair. Very fine used with Schull CDS's, Sept 19th 1872. £85



109

SG 122b 6d pale chestnut pair. Used, contrary to regulation with a single Cornhill CDS, Sept 6th 1872. £130



110

SG 122b 6d pale chestnut plate 11. Very fine used with a Bognor, Sept 18th 1872 CDS. £40



111

SG 123 6d pale buff plate 11 horizontal pair. Very fine used with Tioe-Hurst CDS's. £90



112

SG 125 6d grey block of 4. Superb used, cancelled with 'Ballan Trae' 1874 CDS's. A very scarce multiple CAT £1900. £975



113

SG 125 6d grey. Very fine used with a light crisp West Strand CDS, Dec 6th 1873. Good colour & well centred CAT £300. RPS cert. £240



114

SG 125. 1872-73. 6d grey. Lightly mounted mint. Good colour & well centred CAT £1900. £675



115

SG 126 5/- deep rose shade plate 1. Very fine used with a Cannon St, May 16th 1872 CDS. Well centred & good colour. £525



116

SG 126 5/- rose plate 1 lettered Bl. Superb used with a part London CDS, leaves Queens profile clear. Good deep colour & well centred CAT £675. £450



117

SG 135 10/- greenish-grey. Very fine used with a Liverpool CDS, Aug 29th 1883. Good colour & well centred. £3200



118

SG 138 2½d rosy-mauve plate 1, blue paper. Very fine used with an Alloa CDS. £175



119

SG 139 2½d rosy-mauve plate 1. Very fine used with an upright London CDS, Aug 6th 1875. £95



120

SG 141 2½d rosy-mauve plate 6. Very fine used with a crisp upright Doncaster CDS, Sept 18th 1880. £120



121

SG 141 2½d rosy-mauve plate 7 imperf, over-printed specimen, type 9. Lightly mounted, full margins (spec J9s) CAT £400. £220



122

SG 141 2½d rosy-mauve plate 15. Very fine used with an upright Bute-Docks CDS, Feb 11th 1880. £150



123

SG 141 2½d rosy-mauve plate 16 lettered OG. A pristine unmounted mint example CAT £525. £450



124

SG 143 3d rose plate 16. Fine unmounted mint CAT £450. £375



125

SG 144 3d pale rose plate 19. A pristine unmounted mint example. Excellent centring and good colour. £420



127

SG 144 3d pale rose plate 20. Very fine used with a Kinsale, June 15th 1881 CDS on this scarce plate. £130



128

SG 143s 3d rose plate 18 overprinted specimen, type 9. Pristine unmounted mint. £240



129

SG 143 3d rose plate 16. Fine unmounted mint. RPS cert. £420



130

SG 144 3d pale rose plate 14. Very fine used with an upright Fakenham CDS. £85



131

SG 146 6d deep grey plate 13. Superb used with a Stornoway, Nov 12th 1874 CDS. £150



132

SG 146 6d deep grey plate 14. Lightly mounted mint. good colour & well centred CAT £525. £275



133

SG 146 6d deep grey plate 14. Very fine used with an 'open' Queenstown CDS. £90



134

SG 146 6d deep grey plate 16, over-printed specimen, type 9. Pristine unmounted mint CAT £300. £250



135

SG 147 6d grey plate 17. Lightly mounted mint, well centred CAT £950. £380



136

SG 147 6d grey plate 13. Very fine used with a Hartlepool CDS. £95



137

SG 147 6d grey plate 14. A fine fresh lightly mounted mint example CAT £500. £220



138

SG 148 1/- deep green plate 10. A very fine used CDS example. £150



139

SG 150 1/- green plate 9. Very fine used 'inspectors mark' cancel. £150



140

SG 150 1/- green plate 11. Very fine used with an 'open' Queenstown CDS, Aug 2nd 1876. £130



141

SG 150 1/- green plate 12 variety watermark inverted. Lightly mounted mint. Good colour & centring CAT £2400. Rarely seen. £1500



142

SG 151 1/- orange-brown, watermark spray. Superb used with a Portobello CDS, Dec 22nd 1880. Exceptional quality. RPS cert. £750



143

SG 151 1/- orange-brown plate 13, water-mark spray. Superb used wing marginal example with a neat part Grey-town (Nicaragua) CDS, leaving Queens profile completely clear. £650



144

SG 152 4d vermilion plate 15 lettered AF. Very fine used with a Belfast CDS, Oct 12th 1877. £240



145

SG 152 4d vermilion. Very fine used with a Malta CDS, May 11th 1877. Well centred and good colour. £325



146

(SG 152) 4d imperf colour trial in sage-green. Fine unmounted mint. 4 large margins. £220



148

SG 153 4d sage-green plate 16, overprinted specimen block of 4. Pristine unmounted mint CAT £1400. £875



149

SG 153 4d sage green plate 16 inverted watermark. Very fine used with crisp Mark Lane hexagonal cancel, Sept 23rd 1879. £525



150

SG 153 4d sage-green plate 16. Very fine used with a Ciudad-Bolivar CDS in red which leaves Queens profile clear. Very scarce. £425



151

SG 153 4d sage-green plate 15. Very fine used with an upright London CDS, Dec 24th 1877 CAT £325. £190



152

SG 154 4d grey-brown. Very fine used with an Eastbourne 'box' CDS, Dec 1st 1880 CAT £500. £190



152a

(SG 156) 8d set of colour trials, overprinted specimen in 3 different shades. Orange, pale orange-yellow & brown-orange. 'AL' lightly mounted, BI & GB pristine unmounted mint. All with full margins CAT £1275. £750



153

SG 156 8d orange. Very fine used with an upright London CDS, Jan 1st 1877. Good deep colour & well centred. £220



154

SG 156 8d orange, overprinted specimen. Lightly mounted mint. Lovely deep colour CAT £350. £240



155

SG 157 2½d blue plate 22. Very fine used part London CDS, leaves Queens profile clear. £35



156

SG 157 2½d blue plate 23, overprinted specimen. A pristine unmounted mint marginal example. £170



157

SG 157 2d blue plate 23, overprinted specimen. Lightly mounted mint. Well centred, good colour CAT £175. £85



158

SG 158 3d rose plate 21 lettered CE. Very lightly mounted mint. Good deep colour & well centred CAT £500. £240



159

SG 158 3d rose plate 21 horizontal pair. Very fine used with a Scorrier 'box' CDS, April 20th 1882. £130



160

SG 159 3d on 3d lilac. A fine very fresh lightly mounted mint example lettered HC. Mint example, well centred and good colour CAT £650. £275



161

SG 160 4d grey-brown plate 18 cancelled by a crisp complete Liverpool PLO (packet letter office) CDS. £95



162

SG 160 4d grey-brown plate 18, overprinted specimen. Very lightly mounted mint. Good colour & well centred. £175



163

SG 160 4d grey-brown plate 18. Very fine used with a Liverpool CDS. £70



164

SG 160 4d grey-brown plate 18. Very fine used with a Glasgow CDS, June 1884. £65



165

SG 160 4d grey-brown plate 18. A fine very lightly mounted mint example CAT £450. £190



166

SG 160 4d grey-brown plate 17. Very fine used with a Seething Lane CDS, 25th Nov 1881. £75



167

SG 161 6d grey plate 17. Very fine used with a Claremorris CDS, June 5th 1882. £60



168

SG 162 6d on 6d lilac. A pristine very lightly mounted mint example CAT £675. David Brandon cert. £290



169

SG 162 6d on 6d lilac. Very fine used with a Helston CDS. RPS cert. £95



170

SG 163 1/- orange-brown plate 13. Scarce block of 4. Used in Constantinople. £240



171

SG 163 1/- orange-brown plate 13. Very fine used with a Hillhead CDS, Nov 14th 1881. £130



172

SG 164 1/2 deep green. Very fine used with a Hull 1884 CDS. £15



173

SG 166 1d venetian-red. Unmounted mint
block of 14 CAT £490. £190



174

SG 167 1½d venetian-red. Very lightly
mounted mint CAT £250. £75



175

SG 167s 1½d venetian-red, overprinted
specimen. Fine unmounted mint CAT £80.
£50



176

SG 168 2d pale rose. Very fine used with a
Lothbury registered CDS in blue, Nov
22nd 1881. £45



177

SG 168 2d pale rose, overprinted speci-
men. Pristine unmounted mint CAT
£110. £85



178

SG 168a 2d deep rose. A fine very lightly mounted mint
example CAT £375. £190



179

SG 168a 2d deep rose. Very fine used New-
bury CDS, Feb 14th 1884. £50



180

SG 169 5d indigo. Very fine used with a
Dockburuspar 1883 CDS. £130



181

SG 169 5d indigo. Very fine used with a neat
Eccles hall CDS, July 5th 1883 CAT £175.
£120



182

SG 169 5d indigo, overprinted specimen,
type 9. Pristine unmounted mint marginal
example CAT £160. £85



183

SG 171 1d pale lilac, 14 dot. Very fine used
with an Aylsham CDS, Dec 9th 1881. £40



184

SG 171 1d pale lilac, 14 dot. Very fine used
with a Staplehurst CDS, Sept 30th 1881. £40



185

SG 175 2/6 lilac on blued paper. A fresh
mounted mint example, shows fine delicate
bluing to paper. Scarce CAT £6750. £2200



186

SG 176 1883-84. 5/- rose on blued paper. Superb used with an upright Hull CDS, Nov 3rd 1884. Scarce in this quality CAT £4000. RPS cert. £2900



187

SG 178s 2/6 lilac, overprinted specimen, type 11. Fine unmounted mint. Good colour & well centred (spec K10/1s) CAT £425. £325



188

SG 179 2/6 deep lilac. Very fine used with a crisply struck Bradford Yorks CDS, June 22nd 1898 CAT £225. £140



189

SG 180 5/- rose, overprinted specimen. Very lightly mounted mint CAT £450. £240



190

SG 180 5/- rose. Very fine used with a Victoria St B.O CDS. £95



191

SG 182 10/- cobalt, watermark large anchor on white paper. A scarce mint example, small part gum. Well centred CAT £42000. £2800



192

SG 183 10/- ultramarine. Very fine used with a Cheltenham CDS, April 4th 1897 CAT £525. £240



193

SG 187 1/2d slate-blue. A fine fresh unmounted mint example CAT £35. £25



194

SG 191 3d lilac. Pristine unmounted mint. Good deep colour CAT £280. £240



195

SG 194 6d dull green. Fine unmounted mint CAT £625. £450



196

SG 197 1/2d 'Pears soap' underprint in orange. Unmounted mint top marginal example. £475



197

SG 204 3d purple on orange. Superb used with a Ryde CDS, April 22nd 1895. Excellent colour. Scarce shade used this fine (spec K32/3). Hendon cert. £290 15



198

SG 205wi 4d green & purple-brown, variety watermark inverted. Pristine unmounted mint. Very scarce. £1400



199

SG 208a 6d deep purple/rose-red. A pristine unmounted mint block of 4 CAT £240. £130



200

SG 210a 10d dull purple & deep dull carmine. Very fine used with a Carnoustie CDS, Nov 8th 1895 CAT £250. £85



201

SG 212 £1 green, overprinted specimen. Pristine unmounted mint. Lovely deep colour. Specimen overprint, leaves Queens profile clear. £1275



202

SG 214 1/- green & carmine. Very fine used with Kidderminster CDS, Nov 19th 1901 CAT £140. £65



203

1½d Reply paid essay, watermark crown imperf. Unmounted mint. Full margins CAT £425. £275

EMAIL; STEVEALLEN-ORDERS@LIVE.CO.UK
TEL; 02392 253 133

SUBSCRIBE FOR FREE WITH YOUR EMAIL ADDRESS ON
WWW.STEVENALLENSTAMPS.COM TO GET ALL OUR MAILING
LISTS AND FUTURE SPECIAL OFFERS

WWW.STEVENALLENSTAMPS.COM

CHEQUES MADE PAYABLE TO BRITISH & COLONIAL
STAMPS LTD

PAY DIRECT TO
BRITISH & COLONIAL STAMPS CO.
CUTLERS FARM BARN
NEWLANDS LANE
PURBROOK
PO7 6TN

BARCLAYS ,
81A LONDON ROAD,
WATERLOOVILLE, PO7 7ER
IBAN: GB53 BARC 2069 3423 7460 54
SWIFT IBAN BIC: BARCGB22
ACCOUNT NUMBER: 23746054
BRANCH SORT CODE: 20-69-34

PayPal

