

BRITISH AND COLONIAL STAMPS

FINE AND RARE NOVEMBER PART ONE



42

10% DISCOUNT ON ORDERS OVER £100
15% DISCOUNT ON ORDERS OVER £500

EMAIL; STEVEALLEN-ORDERS@LIVE.CO.UK
TEL; 02392 253 133



1

SG V1 1840 1d black official lettered II. A pristine very lightly mounted mint example with almost full original gum. 4 fine margins. Scarce in this quality CAT £20000. David Brandon cert. £16500



2

1840 1d Rainbow trial (state 3) in bluish-green on thick bluish laid paper. Very fresh marginal example seldom seen in this colour. £2400



3

1840 1d black plate 3, state 2 Imprimatur lettered TI. A superb example with fine margins. RPS cert. Very scarce. £15000



4

SG 3 1d grey-black plate 1a, worn plate lettered OJ. Very fine used with an upright black Maltese cross. 4 fine margins CAT £1100. £675



5

SG 3 1d grey-black plate 3 lettered AL. A fine mounted mint example. 4 good to large margins CAT £20000. £4500



6

SG 1 1d intense black plate 4 lettered IH. A fine fresh mounted mint example. 4 good margins (SG spec AS22). Scarce in this quality CAT £18000. David Brandon cert £6500



7

SG 1 1d intense black plate 6 lettered TH. A very fresh mounted mint example. 4 fine margins CAT £18000. £3600



8

SG 2 1d black plate eleven lettered AG. Lovely crisp impression with full-large even margins, cancelled by very clear and almost thick-lined black Maltese cross. A superb example of this popular and rare plate. David Brandon cert. £3800



9

SG 4 1840 2d deep full blue plate 1 lettered QC-QD. Superb used with crisp black Maltese crosses. 4 fine good to large margins in a very deep full blue shade. Exhibition quality. £2200



10

SG 5 1840 2d blue strip of 3, plate 1. Very fine used with red Maltese crosses. Full margins. Scarce multiple. £2200



11

SG 5 1840 2d blue plate 1 horizontal pair lettered DE-DF. Superb used with crisp red Maltese crosses. Full margins, close to huge. £1500



12

SG 5 1840 2d blue plate 2 lettered SD. Very fine used with a red Maltese cross. 4 fine margins (spec DS8f) CAT £1750. £925



13

SG 5 1840 2d blue plate 2 lettered JK. Very fine used with a full black Maltese cross. 4 large/huge margins. £675



14

SG AS18a 1d red-brown, plate 2 lettered TG, state 3. Very fine used. 4 good to large margins CAT £1100. RPS cert. £375



15

SG 7 1d red-brown plate 9 lettered BI. Very fine used with a neat black Maltese cross. 4 large margins. £175



16

SG 7 1841 1d red-brown plate eleven lettered FL. A fine fresh scarce mounted mint example with 4 good margins CAT £8500. David Brandon cert. £3200



17

SG 8 (spec BS26a.ta) 1d red-brown lettered OD. Very fine used with a 'Belfast' Maltese cross. 4 fine-huge margins. £175



18

SG 8 1d red-brown plate 32, used with a black Maltese cross & blue box cancel 'PyP No15' (handsworth penny post). A very scarce combination. Mike Jackson cert. £475



19

SG 14f 1841 2d blue plate 3 lettered AL. Very fine used with a crisply struck number '8' in Maltese cross. 4 fine margins. £875



20

SG 14f 1841 2d blue plate 3 lettered EB. Very fine used with a number '12' in Maltese cross. 4 fine margins CAT £550. £175



22

SG 55 1847-54. 1/- green embossed on silk threaded paper. A pristine very lightly mounted mint example with very close to large margins. Seldom seen in this quality CAT £24000. BPA cert. £8500



23

SG 57 10d deep brown, die 3. Very fine used with a neatly struck London '2' numeral. 4 fine margins CAT £2200. £875



24

SG 68 6d lilac. A pristine unmounted mint example CAT £1350. £1100



25

SG 77 3d pale carmine-rose. A fine fresh lightly mounted mint example with perfect centring and good colour. Very scarce in this quality CAT £2700. £1250



26

SG 81 4d bright red (with hairlines). A lovely fresh lightly mounted mint example CAT £2300. £875



27

SG 82 4d pale red. Lightly mounted mint example with part right hand sheet margin. Good colour & well centred CAT £2300. £925



28

SG 87 9d straw lettered GK. A fine fresh lightly mounted mint example. Well centred CAT £4000. £1250



29

SG 98 9d straw Abnormal plate 5 lettered MG. A fine mint example of this very rare adhesive. RPS cert CAT £20000. £13500



30

SG 101 1/- Imprimatur lettered BB. A fine example with good to huge margins. Scarce CAT £3800. £1750



31

SG 103 3d rose plate 10. Fine unmounted mint CAT £875. £720



32

SG 110 9d deep straw. Mounted mint. Lovely deep colour and with good centring (spec J96/3). Scarce shade mint CAT £2800. £875



33

SG 110 9d straw. A very fine used example with May 30th 1872 CDS. £190



34

SG 112 10d red-brown. Scarce block of 4. Very fine used with Mark-Lane CDS's, March 1st 1872. £975



35

SG 112s 10d red-brown, overprinted specimen. Lightly mounted mint. Good deep colour CAT £500. £275



36

SG 112s 10d red-brown, overprinted specimen. Lightly mounted mint CAT £500. £290



37

SG 114 10d deep red-brown. Very fine used with 'Irish' Kanturk CDS, July 3rd 1872 CAT £600. £425



38

SG 121 2/- brown lettered GJ. Very fine used with a Manchester 1880 squared circle CDS on a fresh copy with good deep colour CAT £4250. RPS cert. £3200



39

SG 123 6d pale buff plate 12. Very fine used with a High Wycombe CDS, June 2nd 1873 CAT £350. £220



40

SG 128 10/- greenish-grey. Superb used with a crisply struck Edinburgh CDS, leaving Queens profile clear. Good colour & well centred CAT £3200. £2400



41

SG 130 5/- rose plate 4, watermark large anchor on blue paper. Very fine used with a Charles St Haymarket CDS, March 20th 1884. Good colour & well centred CAT £4000. £1650



41a

41a. SG 131 10/- grey-green on blue paper. Very fine used with a Glasgow CDS, April 11th 1884. Good deep colour & well centred CAT £4500. £3600



42

SG 132 £1 brown-lilac, overprinted specimen, watermark large anchor on blue paper. A very fresh lightly mounted mint example. Good colour & well centred. Scarce in this quality CAT £12500. £8500



43

SG 133 £5 orange on blued paper. Very fine used with an upright London CDS. Well centred, good colour & full perfs CAT £12500. £5750



44

SG 135 10/- greenish-grey. Superb used with an upright Folkstone, July 27th 1883 CDS. Good deep colour & well centred. RPS cert. £3600



45

SG 135 10/- greenish-grey. Very fine used with a York St Manchester CDS, March 15th 1884. Well centred and with good deep colour. RPS cert. £3500



46

SG 136 £1 brown, watermark anchor on white paper. Superb used with a part Yorks St Manchester 1884 CDS, leaving Queens profile clear. Stunning deep colour. Rarely seen in this quality. David Brandon cert. £7500



47

SG 137 £5 orange, white paper, watermark anchor, perf 14. A pristine unmounted mint example. Well centred, good colour. Scarce in this quality. David Brandon cert. £13500



48

SG 137 £5 orange. A fine mounted mint example. Very fresh with good deep colour CAT £12500. Karl Albert cert. £6750



49

SG 137 £5 orange. superb used with a Bradford-Yorks CDS, Jan 4th 1895. Nice deep colour. A lovely example. £3500



50

SG 144 3d pale rose plate 20. A pristine 'Post Office' fresh unmounted mint example of this scarce plate. £850



51

SG 147 6d grey plate 14. Pristine unmounted mint CAT £525. £45



52

SG 150 1/- green plate 11. Very fine used with a St Thomas paid CDS, July 15th 1875. £180



53

SG 152 4d vermilion. Very fine used with an upright Southport CDS, June 23rd 1876 CAT £475. £275



54

SG 153 4d sage-green plate 15. Very fine used with an upright Clevedon CDS, Nov 27th 1872. £200



55

SG 154 4d grey-brown, watermark garter. Very fine used with a Keith CDS, 22nd Dec 1880 CAT £500. £275



56

SG 158 3d rose plate 21. Unmounted mint. Good colour & centring CAT £500. £420



57

SG 160 4d grey-brown, overprinted specimen, type 9. Pristine unmounted mint. Nice deep colour & well centred. £220



58

1882 (Nov) 1/- purple, plate 14, type J26, watermark crown (spec K8cs) overprinted specimen lettered AB. A fine fresh mounted mint example CAT £8250. Very scarce. £5500



59

1882 (Nov) 1/- purple plate 14, type J26, watermark crown (SG spec K8c). Mounted mint. Very scarce CAT £15000. £8500



60

SG 175 2/6 lilac on blued paper. Very fine used with a Rothesay CDS, Oct 7th 1884. A nice fresh example with fine bluing CAT £1500. BPA cert. Scarce. £975



61

. SG 176 5/- rose, overprinted specimen, type 9 on blued paper. Lightly mounted mint (spec K11s) CAT £1600. Hendon cert. £975



62

SG 180 5/- rose. A fine fresh unmounted mint example. Good colour & well centred CAT £1100. £875



63

SG 180 5/- rose. Very fine used with a Port Glasgow CDS, July 19th 1892. £120



64

SG 181 5/- crimson. A fine fresh unmounted mint example with good deep colour & well centred. £850



65

SG 182 10/- cobalt. Superb used with an Edinburgh CDS, July 9th 1884. A rare shade, seldom seen in this quality CAT £8250. BPA cert. £6750



66

SG 185 £1 brown-lilac, overprinted specimen (type 11). A pristine unmounted mint example. Lovely deep colour & well centred CAT £2800. £2400



67

SG 188 1 1/2d lilac. A lovely fresh unmounted mint example. £120



68

SG 189 2d lilac. A fine fresh unmounted mint example with good deep colour & well centred. £230



69

SG 192 4d deep green. A fine fresh unmounted mint example with good deep colour CAT £580. £475



70

SG 193 5d dull green lettered TI. A fine fresh unmounted mint example. Good colour & centring CAT £580. £450



71

SG 196 1/- dull green. A fine fresh unmounted mint example. Good colour & well centred CAT £1600. £1250



72

SG 204 3d purple/orange (1890) Spec K32 (3). Fine mounted mint CAT £800. £375



73

SG 212 £1 green. Fine mounted mint, good deep colour & very well centred CAT £3500. £1650



74

SG 212 £1 green. Superb used with a crisply struck Ashford CDS, May 4th 1901 on a fresh copy with lovely rich colour. £750



75

SG 212 £1 green (deep shade). Very fine used with a Paddington CDS, Sept 7th 1897 CAT £800. £625



76

SG 319 10/- blue. A pristine very lightly mounted mint example. Good colour & well centred CAT £1100. £575



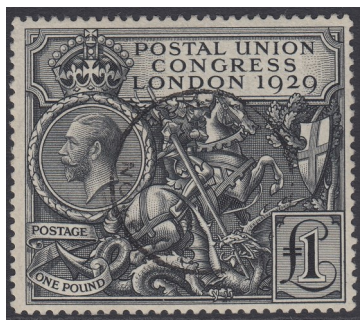
77

SG 320 £1 deep green. A wonderfully fresh unmounted mint example with lovely deep colour CAT £3000. £2400



78

SG 320 £1 deep green. Superb used with a Guernsey CDS. Lovely deep colour CAT £750. RPS cert. £550



78a

SG 438 £1 PUC. A very fine used CDS example, leaving Kings profile clear. A lovely example CAT £550. £375



79

SG O3a 1d IR official, overprinted in 'blue-black'. Fine unmounted mint CAT £300. BPA cert. £275



80

SG O6 2½d lilac IR official. Very fine used with an Exeter CDS, Dec 30th 1892. £150



81

SG O9 5/- rose IR official. Superb used with a Sunderland 1901 CDS. Nice deep colour & well centred CAT £2500. RPS cert. £1850



82

SG O9b 5/- rose IR official with overprint in 'blue-black'. Lightly mounted mint, faintest of tone in left margin, barely seen. Very scarce CAT £14000. Wenvoe cert. £6500 7



83

SG O10b 10/- ultramarine IR official with overprint in 'blue-black'. A fine fresh mounted mint example. Very scarce CAT £12500. Wenvoe cert. £8500



84

SG O16 £1 green IR official. Fine used with an Aberdeen CDS. A nice clean example with good colour CAT £2500. Wenvoe cert. £1175



85

SG O35 10d dull purple & carmine OW official. Very fine used with a Parliament CDS, April 30th 1904 CAT £2250. David Brandon cert. £1275



86

SG O39 2½d ultramarine OW official. Fine mounted mint. Scarce CAT £3500. BPA cert. £2400



87

SG O40 10d dull purple & carmine O.W. official. A very fine used example of this rare Edwardian official CAT £7000. Wenvoe cert. £5500



88

SG O45 6d purple/rose-red Army official. A fine unmounted mint example CAT £110. £95



89

SG O50 6d pale dull purple Army official. Pristine unmounted mint CAT £175. Wenvoe cert. £150



90

SG O61 1½d lilac GOVT parcels, overprinted specimen. A pristine very lightly mounted mint example CAT £220. Wenvoe cert. £150



91

SG O62 6d dull green GOVT parcels, overprinted specimen. A scarce pristine unmounted mint example, seldom seen in this quality. Wenvoe cert. £325



92

SG O64 1/- orange-brown GOVT parcels, overprinted specimen. Fine unmounted mint CAT £325. £240



93

SG O67s 9d dull purple & blue GOVT parcels. A superb unmounted mint right hand marginal example, overprinted specimen, type 9. Wenvoe cert. £280



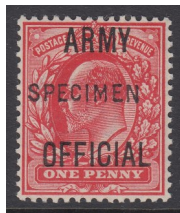
94

SG O71 4½d green & carmine, overprinted GOVT parcels specimen. Lightly mounted mint CAT £300. Wenvoe cert. £175



95

SG O71 4½d green & carmine GOVT parcels. A pristine lightly mounted mint example CAT £400. Wenvoe cert. £275



96

SG O74 1d scarlet Army official with specimen overprint. Fine unmounted mint CAT £350. Scarce. Wenvoe cert. £290



97

SG O74/O77 GOVT parcels 1d & 9d. Superb used on small piece, cancelled with Poplar 1903 CDS's. BPA cert. £220



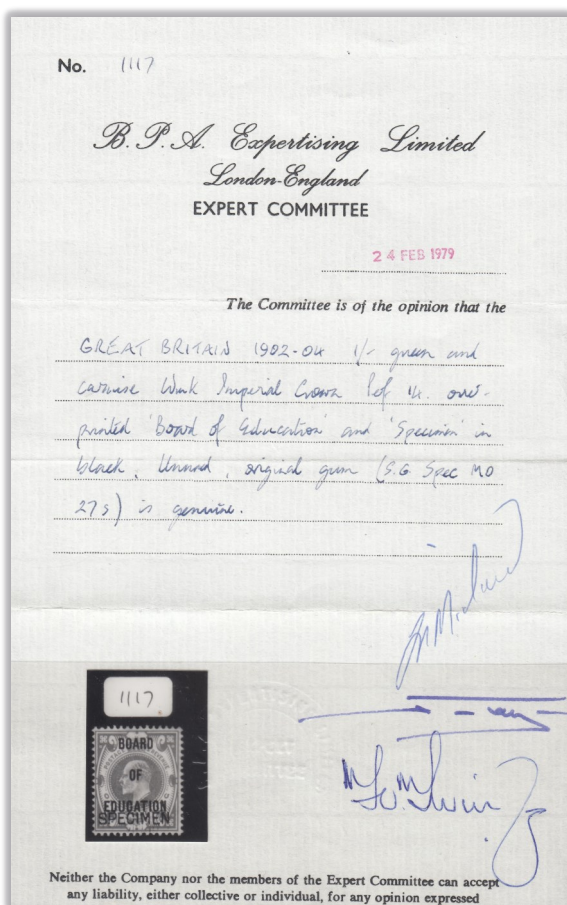
98

SG O77 9d dull purple & ultramarine
GOVT parcels. A fine fresh lightly mounted
mint example CAT £650. Wenvoe cert.
£375



100

SG O87 1/- dull green & carmine Board of Education, watermark crown, perf 14, overprinted specimen (type 16)
in black (SG spec Mo27s). A very fine lightly mounted mint example. Rare CAT £30000. BPA cert. £24000



101

SG O104 2d yellowish-green & carmine-
red. Admiralty official. A fine fresh mount-
ed mint example CAT £350. Wenvoe cert.
£170



102

SG O105 2½d ultramarine Admiralty official.
A fine fresh mounted mint example. Nice
deep colour CAT £475. Wenvoe cert. £275



103

SG D1-D8 Postage dues 1914-22 set of 8.

½d to 1/- overprinted specimen. Fine unmounted mint CAT £460+. £375



104

SG D1-D8 Postage dues 1914-22 set of 8.

½d to 1/- 1d, 2d, 4d & 1/- being marginal.

Fine unmounted mint CAT £450. £325



105

SG D10-D18 Postage dues 1924-31. ½d to

2/6 set of 9. 1d & 1/- being marginal. Fine unmounted mint CAT £725. £450



106

SG D19-D26 Postage dues 1936-37. ½d to 2/6. A pristine lightly/unmounted mint set of 8. £130



107

SG D27-D34 Postage dues 1937-38. ½d to 2/6 set of 8. Fine unmounted mint CAT £290. £175



108

SG D35-D39 Postage dues 1951-52. ½d to 1/- . Fine unmounted mint CAT £75. £45

EMAIL; STEVEALLEN-ORDERS@LIVE.CO.UK
TEL; 02392 253 133

SUBSCRIBE FOR FREE WITH YOUR EMAIL ADDRESS ON
WWW.STEVENALLENSTAMPS.COM TO GET ALL OUR MAILING
LISTS AND FUTURE SPECIAL OFFERS

WWW.STEVENALLENSTAMPS.COM

CHEQUES MADE PAYABLE TO BRITISH & COLONIAL
STAMPS LTD

PAY DIRECT TO
BRITISH & COLONIAL STAMPS CO.
CUTLERS FARM BARN
NEWLANDS LANE
PURBROOK
PO7 6TN

BARCLAYS ,
81A LONDON ROAD,
WATERLOOVILLE, PO7 7ER
IBAN: GB53 BARC 2069 3423 7460 54
SWIFT IBAN BIC: BARCGB22
ACCOUNT NUMBER: 23746054
BRANCH SORT CODE: 20-69-34

PayPal

