

# BRITISH AND COLONIAL STAMPS

## GB AND COMMONWEALTH LIST



155

VIEW OUR ONLINE SHOP & LISTS AT -  
[WWW.STEVENALLENSTAMPS.COM](http://WWW.STEVENALLENSTAMPS.COM)

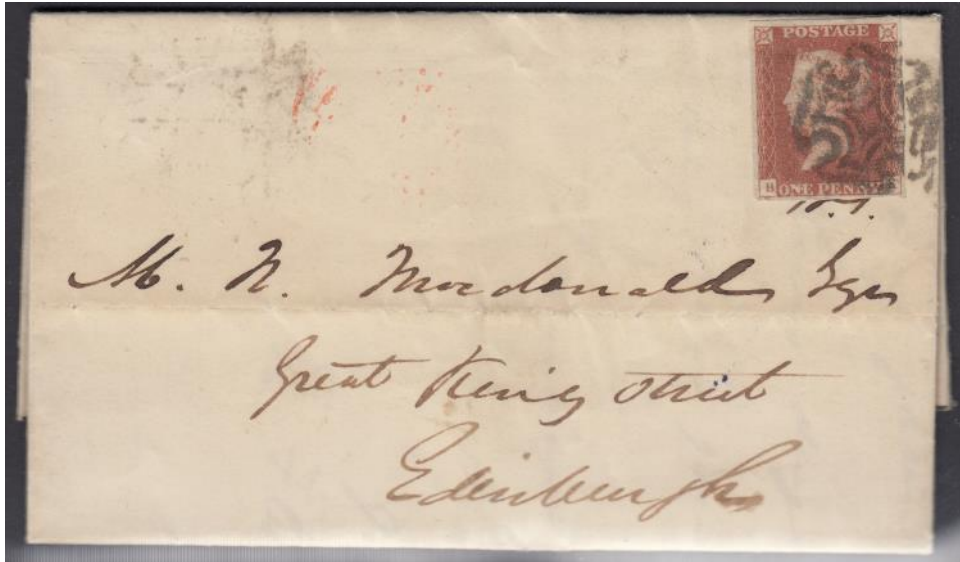
10% DISCOUNT ON ORDERS OVER £200  
15% DISCOUNT ON ORDERS OVER £500

EMAIL: [STEVEALLEN-ORDERS@LIVE.CO.UK](mailto:STEVEALLEN-ORDERS@LIVE.CO.UK)  
TEL: +44(0)2392 253 133



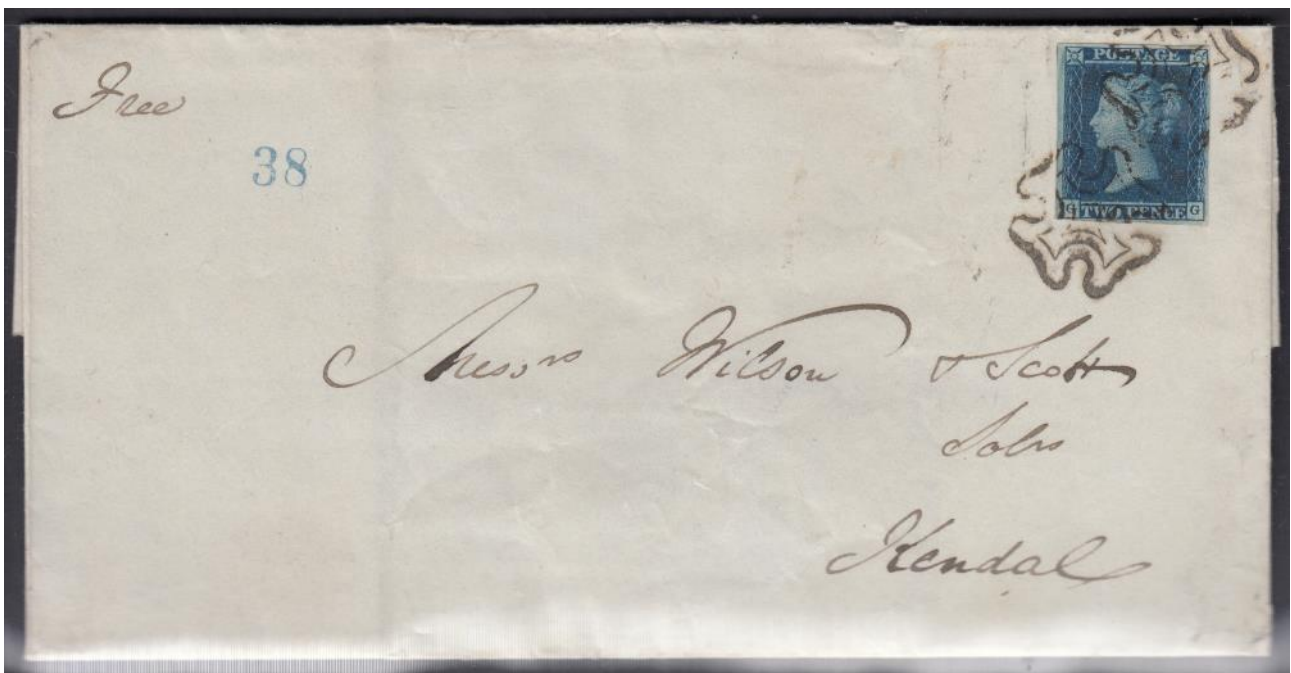
1

SG 5 1840 2d blue plate 1. Superb used with a full upright orange/red Maltese cross. 4 good margins. A lovely example.  
£650



2

SG 8 1d red-brown plate 21 lettered BK on entire to Edinburgh cancelled by a greyish Stirling Maltese cross. 4 fine margins, on reverse is a Stirling May 9th 1842 rectangle & red CDS for May 10th 1842. Horizontal filing crease clear of stamp CAT £500. £150



3

SG 14 1841 2d blue plate 3 lettered GG. Fine used on entire to Wilson & Scott solicitors, Kendal July 12th 1842 back stamp in blue, 13th July 1842. Stamp with 4 good to large margins tied with 2 Maltese crosses. Some light soiling otherwise fine CAT £650. £275



4

SG 36 1d rose-red, watermark large crown perf 16. A fine fresh mint example without gum CAT £2800. £240



5

SG 62 4d carmine, watermark small garter, blued paper. Fine used with a '498' (Manchester) numeral CAT £450. £120



6

SG 62b 4d carmine, small garter, white paper. Very fine used CAT £1100. £240



7

SG 90 1/- green with margin & inscription. Used on front to USA tied by Bath duplex & 5c hand stamp in red. Sent on Aug 15th 1863, Boston Aug 30th arrival CDS. £175



8

SG 93 4d dull vermilion plate 13. Fine mounted mint CAT £650. £150



9

SG 103 3d rose plate 6. Fresh mint without gum. Good colour & centring CAT £550. £60



10

SG 103 3d rose plate 10. Very fine used with a Leith, Sept 5th 1873 CDS CAT £150. £45



11

SG 108 6d dull violet. A fresh mint example without gum CAT £1400. £130



12

SG 109 6d mauve plate 8. A fresh mint example without gum CAT £800. £85



13

SG 109 6d mauve plate 9. Mounted mint CAT £700. £95





**14**

SG 150 1/- green plate 4. Fresh mint without gum CAT £975. £85



**15**

SG 117 1/- green plate 4. Fresh mint without gum. Pulled perf at base CAT £975. £50



**16**

SG 117 1/- green plate 5. A fine fresh mint example without gum CAT £800. £85



**17**

SG 117 1/- green plate 5. Very fine used with a Westbourne park Cornwall CDS, Aug 13th 1872. £35



**18**

SG 117 1/- green plate 6. A fine fresh mint example without gum CAT £120. £110



**19**

SG 117 1/- green plate 7. Fresh mint without gum CAT £1400. £95



**20**

SG 120 2/- pale blue. A very fresh mounted mint example. Some irregular perfs. Scarce CAT £5000. £375



**21**

SG 122a 6d chestnut plate 11. A very fine used CDS example. Good deep colour. £25



**22**

SG 134 5/- rose, plate 4. Very fine used with a Glasgow CDS, Feb 27 1883. Good colour & well centred. Light horizontal crease, barely seen at face CAT £3800. £450



**24**

SG 141 2½d rosy-mauve plate 6, variety misperfed. Fine mounted mint CAT £525. £85



**25**

SG 141 2½d rosy-mauve plate 16. Mounted mint. Good colour & well centred CAT £525. £85



**26**

SG 141 2½d rosy-mauve plate 17. Very fine used. Good colour CAT £300. £45



**27**

SG 142 2½d blue plate 17 lettered AD. A fine fresh mounted mint example CAT £575. £120



**28**

SG 144 3d pale rose plate 17. A fine fresh mint example without gum CAT £525. £55



**29**

SG 143 3d rose plate 20. A fine fresh mint example without gum CAT £850. £85



**30**

G 144 3d pale rose plate 20. A fine fresh mint example without gum CAT £850. £85



**31**

SG 146 6d deep grey plate 14. Mounted mint CAT £600. £95



**32**

SG 150 1/- green plate 10. Fine mint without gum CAT £775. £75



**33**

SG 153 4d sage-green plate 15. Mint without gum CAT £1600. £130



**34**

. SG 167 1½d venetian-red. Very fine used with a crisply struck Leith, Dec 12th 1882 CDS CAT £60. £30



**35**

SG 175 2/6 lilac, blued paper. Very fine used with an Evesham CDS, Sept 14th 1883. Small reverse thin CAT £1500. £275



**36**

SG 268 ½d dull green. A remarkable misperf marginal block of 4, due to paper fold when printed. Fine unmounted mint. £575



**37**

SG 268 ½d dull green. A remarkable top of sheet misperf strip of 3. Unmounted mint. £475



**38**

1943 ½d Jersey views (SG 3) colour proof in green 140x90 on white wove paper of the 1943 ½d Jersey views issue. Tone spots. Scarce. £130



**39**

1943 1d Jersey views (SG 3) colour proof in yellowish-brown 140x88 of the 1943 1d Jersey views issue on white wove paper. £220





40

SG 51 Antigua 1913. 5/- grey-green & violet. Fine unmounted mint CAT £95. £80



41

SG 55-61 Antigua 1921. 3d-£1 set of 7. Lightly mounted mint CAT £300. £175



42

SG 55s-61s Antigua 1921-29. 3d-£1 overprinted specimen set of 7. Fine mounted mint. £180



43

SG 61 Antigua 1921-29. 1/- purple & black/red, overprinted specimen. A fine fresh lightly mounted mint example. £150



44

SG 61 Antigua 1921. 1/- purple & black/red. A very lightly mounted marginal example. Well centred & with good colours CAT £275. £220



45

SG 61 Antigua 1921-29. 1/- purple & black on red. Very fine used tied to piece by St Johns CDS CAT £400. £320



46

SG 79 Antigua 1921-29. 3/- green & violet, overprinted specimen. A fine fresh lightly mounted mint example. £65



47

SG 80 Antigua 1921-29. 4/- grey-black & red, overprinted specimen. Fine mounted mint. £65



48

SG 11c Ascension 1924. 1d grey-black & deep blue-green, variety cleft rock. Very fine used CAT £275. £130



49

SG 14c Ascension 1924-33. 3d blue, watermark mult script CA variety cleft rock. Very fine used Ascension reg oval CAT £275. £140



50

SG 1-11 Barbuda 1/2d to 5/- set of 11. Fine mounted mint CAT £150. £85



51

SG 3a Bushire 1915. 3ch green & grey, variety no stop. Lightly mounted mint CAT £425. £375



52

SG 11a Bushire 1915 (Aug) 2kr claret & green, no stop variety. Very fine used. RPS cert (1920 doesn't mention the no stop variety). Very scarce. £975



53

SG 1-10 Basutoland 1933. 1/2d to 10/- set of 10 on registered cover from Maseru to England, March 26th 1936. Corner tear at bottom right side and some light soiling. £275





54

SG 31 British East Africa 1/2 anna on 3a black/dull red. Very fine used CAT £65. £45



55

SG 170-174 British Guiana 1882. 1c-8c set of 5. Fine mounted mint CAT £300. £90



56

SG 259-269a British Guiana 1913-21. 1c-96c set of 11, overprinted specimen. Fresh mounted mint. 48c has reverse thin CAT £250. £130



57

SG 17 British Honduras 1882-87. 1d blue. A fine fresh mounted mint, well centred example CAT £75. £25



58

SG 18-19 British Honduras 1882-87. 1d rose & 1d carmine. Fine fresh mounted mint well centred example. £35



59

SG 63 British Honduras 1891-1901. \$1 green & carmine. Very lightly mounted mint CAT £100. £40



60

SG 36a British Solomon Islands 1914-23. 5/- on orange buff. Fine mounted mint CAT £60. £25



61

SG 38 British Solomon Islands 1914-23. £1 purple & black/red. A fine fresh mounted mint example CAT £250. £140



62

SG 52 British Solomon Islands 1922-31. 10/- green & red/emerald. A fine lightly mounted mint example CAT £150. £85



63

SG 116 Canada 1893. 50c blue. Lightly mounted mint CAT £300. £65



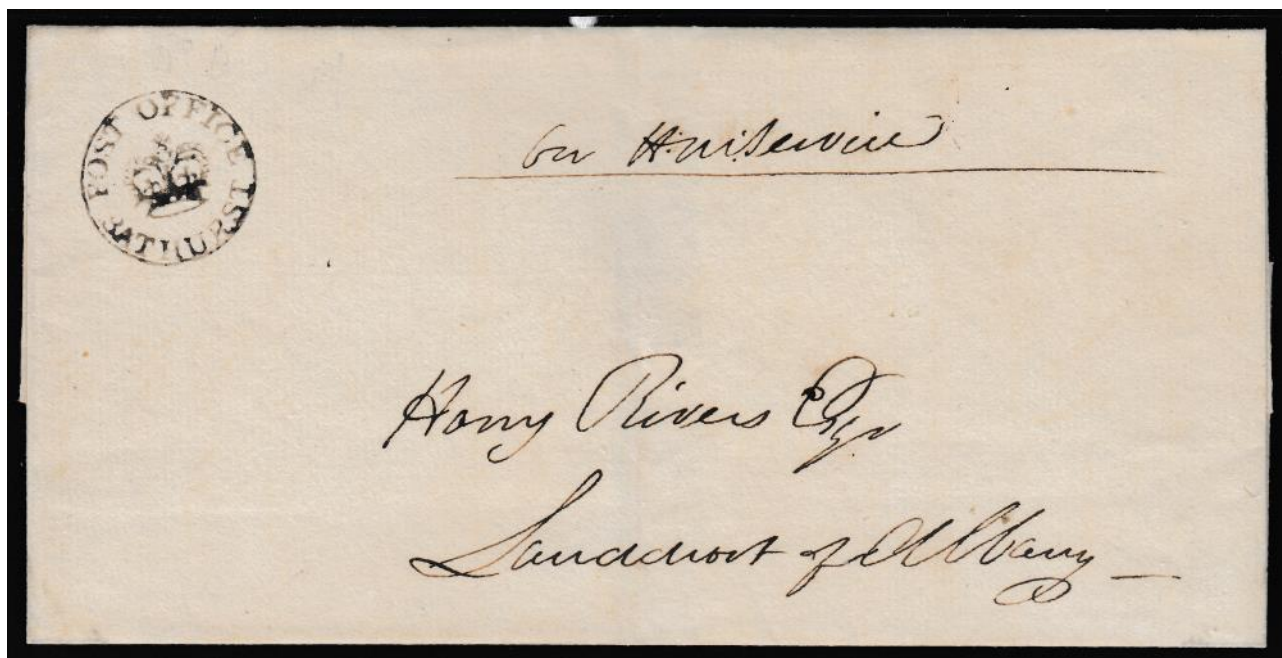
64

SG 182 Canada 1903. 10c brown-lilac. A fresh mounted mint example CAT £160. £35



65

SG 185 Canada 1903. 20c pale olive-green. A fine fresh lightly mounted mint example CAT £300. £85



66

Cape of Good Hope. Undated early entire addressed to Landrost of Albany, headed 'On HM service' and showing neat strike of circular 'Post Office/crown/Bathhurst'. Fine & attractive. £90



67

SG 1a Cape of Good Hope 1853. 1d pale brick-red. Very fine used, full margins CAT £450. £175



68

SG 2 Cape of Good Hope 1853. 4d deep blue on deeply blued paper. Very fine used, full margins CAT £300. £120



69

SG 3 Cape of Good Hope 1853. 1d brick-red. Fine mounted mint. Full margins CAT £3500. £675



70

SG 5b Cape of Good Hope 1855-63. 1d deep rose-red. A fine fresh lightly mounted mint example. Full margins good to large CAT £1300. £425



71

SG 7c Cape of Good Hope 1855-63. 6d slate purple, blued paper pair. Mounted mint, horizontal gum crease unseen at face. Margins vary, large to just into CAT £9000. A rare multiple. RPS cert. £1275



72

SG 8 Cape of Good Hope 1855-63. 1/- bright yellow-green. Lightly mounted mint. Full fine margins CAT £3750. £750



73

SG 13 Cape of Good Hope 1861. 1d vermillion on unwatermarked laid paper. Mint without gum. Diagonal crease & reverse thin at base. Almost full margins CAT £17500. £850



74

SG 19 Cape of Good Hope 1863-64. 4d deep blue. Very fine used, full-large margins CAT £130. £65



75

SG 1 Cyprus 1880. 1/2d rose plate 15. Fine used CAT £110. £35





**76**

SG 1 Cyprus 1880. 1/4d rose plate 15. Very fine used CAT £110. £85



**77**

SG 1 Cyprus 1880. 1/4d rose plate 15. A fine fresh very lightly mounted mint example with good colour & centring CAT £120. £60



**78**

SG 2 Cyprus 1880. 1d red plate 217. Very fine used CAT £65. £35



**79**

SG 4 Cyprus 4d sage-green plate 16. Lightly mounted mint. A nice fresh example CAT £140. £65



**80**

SG 5 Cyprus 1880. 6d grey. A fine fresh mounted mint example CAT £500. £180



**81**

SG 7 Cyprus 1881. 1/4d on 1d red plate 174. Very fine used CAT £400. £150



**82**

SG 9 Cyprus 1881. 1/4d on 1d red plate 215. Very fine used with a Larnaca CDS CAT £75. £50



**83**

SG 9 Cyprus 1881. 1/4d on 1d red plate 218. Very fine used CDS example CAT £130. £75



**84**

SG 9 Cyprus 1881. 1/4d on 1d red plate 217. Very fine used with a Larnaca CDS CAT £120. £75



**85**

SG 9aa Cyprus 1881 1/2d, type 5 (13mm) on 1d red plate 205, variety surcharged doubled. Fine mounted mint. Scarce CAT £800. £450



**86**

SG 9 Cyprus 1d red plate 215. Very fine used with a part Larnaca CDS CAT £75. £50



**87**

SG 9ab Cyprus 1881 1/2d type t (13mm) on 1d red plate 215, variety surcharge doubled. Fine mounted mint, well centred CAT £450. £240



**88**

SG 15 Cyprus 1881. 6pi olive-grey, watermark CC. Fine used CAT £475. Scarce. RPS cert. £320



**89**

SG 23 Cyprus 1882. 1/2d on 1/2d emerald-green. Very fine used CAT £80. £45



**90**

SG 24 Cyprus 1882. 30pa on 1pa rose. Very fine used CAT £120. £50





91

SG 31-37 Cyprus 1892-94. ½pi-12pi. A fine fresh mounted/lightly mounted mint set of 7 CAT £475. £250



92

SG 35 Cyprus 1892-94. 4pi olive-green. Very fine used with a Larnaca Cyprus, June 28th 1892 CDS CAT £50. £30



93

SG 49 Cyprus 1884-96. 45pi grey-purple & blue. Very fine used with a Larnaca CDS CAT £160. £90



94

SG 50-59 Cyprus 1902-04. ½dpi-45pi. A fine fresh mounted mint set of 10 CAT £600. £375



95

SG 55 Cyprus 1902-04. 6pi sepia & green. Very fine used, Kings profile clear CAT £150. £85



96

SG 56 Cyprus 1902-04. 9pi brown & carmine, watermark crown CA. Very fine used CAT £275. £175



97

SG 58 Cyprus 1902-04. 18pi black & brown. Very fine used part CDS, leaves Kings profile clear CAT £180. £95



98

SG 85-99 Cyprus 1921-23. 10pa-45pi set of 15. Lightly mounted mint CAT £550. £350



**99**

SG 102 Cyprus 1924-28. £1 purple & black/red. A fine fresh very lightly mounted mint example CAT £300. £220



**100**

SG 117 Cyprus 90pi green & red/yellow. Pristine very lightly mounted mint CAT £130. £95



**101**

SG 8 Dominica 1877-79. 6d green. Fine mounted mint. Good colour & well centred, dealers mark on reverse CAT £180. £45



**102**

SG 9 Dominica 1877-79. 1/- magenta. A fine fresh mounted mint example CAT £140. £35



**103**

SG 10-12 Dominica 1882. 1/2d bisects. Fresh mounted mint CAT £345. £85



**104**

SG 27-36 Dominica 1903. 1/2d to 5/- set of 10, overprinted specimen. Fine lightly mounted mint examples CAT £200. £130



**105**

SG 99-108a Dominica 1938-47. 1/2d to 10/- set. Fine unmounted mint. £60





106

SG 36 Dominica 1903. 5/- black & brown. A pristine very lightly mounted mint example. £75



107

SG 54 Dominica 1908-20. 5/- red & green/yellow. A fresh lightly mounted mint example CAT £65. £35



108

SG 91 Dominica 1923-33. £1 black & purple/red. Lightly mounted mint CAT £225. £175



109

SG 1s-14s East Africa & Uganda Protectorate 1903. 1/2a-10r set of 14, overprinted specimen. Fine fresh mounted mint CAT £500. £350



110

SG 15s East Africa & Uganda Protectorate 1903. 20r grey & stone, overprinted specimen. Very lightly mounted mint CAT £200. £130



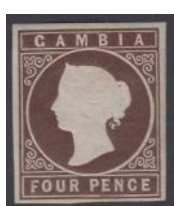
111

SG 16s East Africa & Uganda Protectorate 1903. 50r grey & red-brown, overprinted specimen. Fresh mounted mint example CAT £450. £240



112

SG 62s East Africa & Uganda Protectorate 1912-21. 100r purple & black on red paper, overprinted specimen. A fine fresh lightly mounted mint example. £650



113

SG 1 Gambia 1869-72. 4d brown, no watermark. Lightly mounted mint. 4 fine margins CAT £600. RPS cert. £240



114

SG 2 Gambia 1869. 4d pale brown. A fine fresh mint example without gum. 4 fine margins CAT £500. £130



115

SG 5 Gambia 1869. 5d brown. Fine mounted mint. 4 good to large margins CAT £400. £150





**116**

SG 5 Gambia 1884. 4d brown. Very fine used with a Gambia, April 20th 1882 CDS in red. 4 fine margins CAT £225. £85



**117**

SG 7 Gambia 1874. 6d deep blue. Lightly mounted mint. 4 large margins CAT £350. £220



**118**

SG 8 Gambia 1874. 6d blue. Fine mounted mint. 4 fine margins CAT £350. £140



**119**

SG 9y Falklands 1855. 4d pale grey-black with watermark crown right of CA & reversed. Fine mounted mint. Stephan Heijtz cert CAT £900. £475



**120**

SG 32 Falklands 1891-1902. 4d olive-black. A fine fresh unmounted marginal block of 14 CAT £224. £170



**122**

SG 41 Falklands 1898. 2/6 deep blue. Very fine used. Good colour & well centred CAT £300. £220



**123**

SG 41/42 Falklands 1898. 2/6 deep blue & 5/- red. Lightly mounted mint examples CAT £525. £320



**124**

SG 41 Falklands 1898. 2/6 deep blue. Very fine used part CDS, leaves Queens profile clear CAT £275. £190



125

SG 42 Falklands 1898. 5/- red. Superb used with an upright Falkland Island CDS, 28 Oct 1902 CAT £275. £220



126

SG 43-50 Falklands 1904-12. 1/2d to 5/- set of 8.  
All fresh lightly mounted mint examples CAT  
£475. £325



127

SG 46b Falklands 1904-12. 2 1/2d deep blue.  
Mounted mint CAT £275. American Philatelic society cert. £120



128

SG 48 Falklands 1904-12. 1/- brown. Un-mounted corner marginal block of 4. Small red dealers mark on reverse on lower right stamp CAT £200. £130



129

SG 50s Falklands 1904-12. 5/- red, overprinted specimen, watermark mult crown CA. Lightly mounted mint. £150



130

SG 67 Falklands 1912-20. 5/- deep rose-red. Very fine used part Falklands CDS, leaves Kings profile clear. £110



131

SG 67b Falklands 1912-20. 5/- maroon. A fine fresh lightly mounted mint example CAT £140. £85



132

SG 68 Falklands 1912-20. 10/- red/green. A fine fresh lightly mounted mint example CAT £200. £130





**133**

SG 69 Falklands 1912-20. £1 black/red, overprinted specimen. Fine mounted mint. £525



**134**

SG 76 Falklands 1921-28. 2½d deep blue. Very fine used re-joined block of 4 cancelled with a single Falkland Island CDS CAT £76. £40



**135**

SG 80 Falklands 1921-28. 3/- slate-green block of 4, 3 stamps being unmounted CAT £400. £320



**136**

SG 80 Falklands 1921-28. 3/- slate-green. Un-mounted mint corner marginal block of 4 CAT £400. £350



**137**

SG 116-126 Falklands 1929-37 Whale & Penguin set of 11. ½d-£1. Lightly mounted mint CAT £700. £425





**138**

SG 121 Falklands 1929-37. 6d purple. Fine unmounted mint CAT £28. £20



**139**

SG 121a Falklands 6d reddish-purple, line perf 1936. A pristine unmounted mint block of 4 CAT £200. £150



**140**

SG 122 & 122a Falklands 1929. 1/- black emerald & bright emerald. Fine mounted mint CAT £66. £25



**141**

SG 123 Falklands 1929-37. 2/6 carmine/blue. Very fine used on small piece cancelled with an upright Port Stanley CDS CAT £70. £45



**142**

SG 123 Falklands 1929. 2/6 carmine/blue. Very fine used on small piece, Port Stanley CDS, 2nd July 1934 CAT £70. £40



**143**

SG 124 Falklands 1929-37. 5/- green/yellow. Very fine used with a part Falkland Island CDS CAT £120. £70



**144**

SG 124 Falklands 1929. 5/- green/yellow. Very fine used on small piece, Port Stanley CDS, 2nd July 1934 CAT £120. £70



**145**

SG 126 Falklands 1929-37. £1 black/red. Fine unmounted mint CAT £325. £275



**146**

SG 126 Falklands 1929-37. £1 black/red. Very fine used with a Port Stanley CDS CAT £425. £290



**147**

SG 135 Falklands 1933. 2/6 black & violet. Very fine used Port Stanley CDS CAT £400. £220



**148**

SG 135 Falklands 1933. 2/6 black & violet. Very lightly mounted mint CAT £250. £140



**149**

SG 135 Falklands 1938. 2/6 black & violet. Very fine used CAT £400. £240



**150**

SG 136 Falklands 1933. 5/- black & yellow. Lightly mounted mint CAT £1000. £525



**151**

SG 137 Falklands 1933. 10/- black & chestnut. Lightly mounted mint. Well centred & good colour CAT £900. Photocopy of BPA cert when in a set. £525



**152**

SG 137 Falklands 1938. 10/- black & chestnut. Superb used with a part Port Stanley CDS CAT £1600. £875



**153**

SG 138 Falklands 1933. £1 black & carmine. A fine fresh lightly mounted mint example CAT £2500. BPA cert when in a set of 12. £1575



**154**

SG 138 Falklands 1933. £1 black & carmine. Lightly mounted mint. Well centred & good colour CAT £2500. BPA cert when in a set of 12. £1575



**155**

SG 138 Falklands 1938. £1 black & carmine. Superb used with a part Fox Bay CDS, leaving Kings profile clear CAT £3750. £2200



**156**

SG 157 Falklands 9d black & grey-blue. Unmounted mint corner marginal block of 4 CAT £112. £75





**157**

SG 160 Falklands 1938-50. 2/6 slate. A fine fresh unmounted mint marginal block of 4  
CAT £260. £175



**158**

SG 161 Falklands 1938. 5/- blue & chestnut. Fine unmounted mint CAT £160. £120



**159**

SG 161b Falklands 1938-50. 5/- indigo & pale yellow-brown. Very fine used part  
CDS CAT £95. £55



**160**

SG 161b Falklands 1938-50. 5/- indigo & pale yellow-brown. Lightly mounted mint CAT £1100. £375



**161**

SG 161b Falklands 1938-50. 5/- indigo & pale brown. Very fine used, vertical pair cancelled with a single upright Port Stanley  
CDS, 11th June 1945 CAT £180. £85



**162**

SG 161c Falklands 1938. 5/- dull blue & yellow-brown. Fine unmounted mint CAT £130. £85



**163**

SG 161d Falklands 1938. 5/- steel blue & buff-brown. Fine unmounted mint CAT £425. £280



**164**

SG 162b Falklands 1938-50. 10/- black & red-orange. A fine fresh unmounted mint block of 4  
CAT £520. £325





**165**

SG 163 Falklands 1938. £1 black & violet. A fine fresh unmounted mint example CAT £140. £85



**166**

SG 163 Falklands 1938-50. £1 black & violet. A fine fresh unmounted mint block of 4 CAT £560. £325



**167**

SG 193-207 Falklands 1960. ½d-£1 set. Very fine used on the First day of issue 10th Feb 1960 on 6 small envelopes addressed to Mrs O'Pole-Edwards. A nice clean lot. £170



**168**

SG 124 Fiji 1906-12. A pristine very lightly mounted mint example CAT £300. £220



**169**

SG124 Fiji 1906-12. £1 purple & black. Very fine used part CDS CAT £275. £190



**170**

SG 122-142 Gambia 1922-29. ½d to 10/-, watermark script set + extra shades. Lightly mounted mint CAT £300+. £220



**171**

SG 6 Gibraltar 1886. 6d deep lilac. Very fine used part Gibraltar CDS CAT £225. £130



**172**

SG 52 Gibraltar 1903. 2/- green & blue. Pristine very lightly mounted example CAT £200. £120



**173**

SG 53 Gibraltar 1903. 4/- dull purple & green. Very fine used, leaving Kings profile clear CAT £225. £170



**174**

SG 53 Gibraltar 1903. 4/- dull purple & green. A fine fresh lightly mounted mint example CAT £150. £80



**175**

SG 54 Gibraltar 1903. 8/- dull purple & black/blue. Very fine used, leaving Kings profile clear CAT £225. £170



**176**

SG 54 Gibraltar 1903. 8/- dull purple & black/blue. A fine mounted mint example CAT £170. £65





**177**

SG 55 Gibraltar 1903. £1 dull purple & black, overprinted specimen. A fine mounted mint example. £275



**178**

SG 72 Gibraltar 1903. 8/- green & blue. A fine fresh mounted mint example CAT £200. £75



**179**

SG 73 Gibraltar 1906-12. 4/- black & carmine. Lightly mounted mint CAT £170. £120



**180**

SG 74 Gibraltar 1906-11. 8/- purple & green. Lightly mounted mint CAT £275. £150



**181**

SG 85 Gibraltar 1912-24. £1 specimen. A fresh mounted mint example. £150



**182**

SG 101 Gibraltar 1921-27. 8/- dull purple & green. Fine unmounted mint CAT £325. £240



**183**

SG 102-107 Gibraltar 1925. 2/- to £1. All fresh lightly mounted mint examples CAT £294. £180



**184**

SG 102-107s Gibraltar 1925-32. 1/- to £1 overprinted specimen (various types). Fresh mint. 2/-, 10/- & £1 without gum CAT £550. £240



**185**

SG 107 Gibraltar 1925-32. £1 red, orange & black. A fine unmounted mint example CAT £190. £150



**186**

SG 23 Gilbert & Ellice Islands 1912-24. 5/- green & red/yellow. Very lightly mounted mint CAT £32. £15



**187**

SG 24 Gilbert & Ellice Islands 1912-24. £1 purple & black on red. Superb used part CDS. Good colour & well centred. Scarce in this quality CAT £1600. RPS cert. £1275



**188**

SG 24 Gilbert & Ellice Islands 1912-24. £1 purple & black on red. A fine unmounted mint example CAT £550. £425



**189**

SG 35 Gilbert & Ellice Islands 1922-27. 10/- green & red/emerald. A fine fresh lightly mounted mint example CAT £160. £85



**190**

SG 24 Gilbert & Ellice Islands 1912-24. £1 purple & black/red. A fine fresh very lightly mounted mint example CAT £550. £320



**191**

SG 46 Gold Coast 1902. 5/- green & mauve. A pristine very lightly mounted mint example CAT £75. £40



**192**

SG 84 Gold Coast 1913-21. 20/- purple & black/red. Lightly mounted mint CAT £170. £130



**193**

SG 84 Gold Coast 1913-21. 20/- purple & black/red. A very fine used CDS example CAT £160. £65



**194**

SG 33 Gwalior 1r slate. A fine fresh mounted mint example CAT £200. £45



**195**

SG 39a Hong Kong 1882-96. 30c grey-green. A fine lightly mounted mint example CAT £120. £50



**196**

SG 76 Hong Kong 1903. \$10 slate & orange/blue. A fine fresh very lightly mounted mint example CAT £1400. £950



**197**

SG 79 Hong Kong 1904-06. 5c control & sheet number marginal pair. Very lightly mounted mint CAT £150+. £120



**198**

SG 87a Hong Kong 1904-06. \$2 slate & scarlet on chalky paper. A fine lightly mounted mint example CAT £350. £200



**199**

SG 88 Hong Kong 1904-06. \$3 slate & dull blue. A pristine very lightly mounted mint example CAT £375. £250





**200**

SG 89 Hong Kong 1904-06. \$5 purple & blue-green. A fine fresh mounted mint example CAT £550. £275



**201**

SG 114 Hong Kong 1912-21. \$3 green & purple. A fine fresh mounted mint example CAT £300. £130



**202**

SG 115 Hong Kong 1912-21. \$5 green & red on green back, watermark MCA. A fine fresh very lightly mounted mint example CAT £725. £475



**203**

SG 115a Hong Kong 1912-21. \$5 green & red/green, white back. A fine lightly mounted mint example CAT £600. £325



**204**

SG 116 Hong Kong 1912-21. \$10 purple & black, watermark MCA. Lightly mounted mint CAT £600. £450



**205**

SG 172 Hong Kong 1948 Royal Silver wedding \$10 carmine. Very fine used CAT £130. £85



**206**

SG F2 Hong Kong 1874-1902. \$3 violet. Fine used CAT £55. £20



**207**

SG F10 Hong Kong 1897. \$1 on \$2 olive-green. Very fine used with a Hong Kong CDS CAT £130. £75



**208**

India: Airmails: Rocket mail: 1935 (Feb 27) cover bearing maroon and black label 'ROCKET FIRING TEST/AT DHAKURIA/27th February 1935/Made at the special request of the/Calcutta PRESS tied by Rocket cachet, fine, 130 flown, signed by Stephen H. Smith. £275





209

SG 17-19 Ireland 1922. 2/6 to 10/-. Un-mounted set of 3. 2/6 & 10/- being marginal examples CAT £300. £240



210

SG 21 Ireland 1922. 10/- dull grey-blue. Very lightly mounted mint CAT £200. £85



211

SG 65 Ireland 1922-23. 5/- rose-carmine. Very fine used part CDS, leaves Kings profile clear CAT £170. £85



212

SG 66 Ireland 1922-23 'Saorstat' overprint of 10/- dull blue. A fine fresh unmounted mint marginal block of 4 CAT £800. £575



213

SG 66 Ireland 1922-23 'Saorstat' overprint on 10/- dull blue. A fine fresh unmounted mint example CAT £200. £150



214

Kenya & Uganda 1922-27. 1c to 10/-. Very fresh mounted/lightly mounted mint. £350





**215**

SG 12 Kenya, Uganda & Tanganyika 1903-04. 4r grey & emerald-green. Very fine used, good colour CAT £350. £220



**216**

SG 14a Kenya, Uganda & Tanganyika 1903-04. 10r grey & ultramarine, chalky paper. A fine fresh mounted mint example CAT £600. £325



**217**

SG 58 Kenya, Uganda & Tanganyika 1912-21. 10r red & green/green. A fine lightly mounted mint example CAT £250. £175



**218**

SG 59 Kenya, Uganda & Tanganyika 1912-21. 20r black & purple. Very lightly mounted mint CAT £475. £375



**219**

SG 59 Kenya, Uganda & Tanganyika 1912-21. 20r black & purple/red, overprinted specimen in red. Mounted mint. £190



**220**

SG 61s Kenya, Uganda & Tanganyika 1912-21. 50r dull rose-red & dull grey, greyish-green, overprinted specimen. Lightly mounted mint. £240



**221**

SG 62 Kenya, Uganda & Tanganyika 1912-21. 100r purple & black, overprinted specimen. A fine scarce unmounted mint example. Good colours & well centred. Scarce in this quality. £875



**222**

SG 95 Kenya, Uganda & Tanganyika 1922-27. £1 black & orange. A fine fresh lightly mounted mint example with good deep colour CAT £225. £180



**223**

SG 95s Kenya, Uganda & Tanganyika 1922-27. £1 black & orange, overprinted specimen. A fine fresh lightly mounted mint example. Good colours & well centred. £275



**224**

SG 98 Kenya, Uganda & Tanganyika 1922-29. £4 black & magenta, overprinted specimen. Very lightly mounted mint, good colours & centring. A lovely example. £675



**225**

SG 99s Kenya, Uganda & Tanganyika 1922-27. £5 black & blue, overprinted specimen. A pristine very lightly mounted mint example with good deep colour & well centred. £950



**226**

SG 100s Kenya, Uganda & Tanganyika 1922. £10 black & green, overprinted specimen vertically in red. A pristine very lightly mounted mint example. £1275



**227**

SG 102s Kenya, Uganda & Tanganyika 1922-27. £25 black & red, overprinted specimen. A fine unmounted mint example. Good deep colour & well centred. £2400



**228**

SG 104s Kenya, Uganda & Tanganyika 1922-27. £75 purple & grey, overprinted specimen. A pristine very lightly mounted mint example. Well centred, good colour. Scarce in this quality. £5500



**229**

SG 114c Leeward Islands 1938-51. £1 violet & black/scarlet. A pristine unmounted mint block of 4 CAT £120. £75



**230**

SG 78 Malaysia Federated States 1924-34. \$2 green & carmine. A fine fresh very lightly mounted marginal example CAT £55. £25



**231**

SG 11 Malaya 1900. \$1 green & pale green, overprinted type 2. Very fine used CAT £275. RPS cert. £175



**232**

SG 1s-13s Malaya Kelantan 1911-15 set of 13, overprinted specimen, type D12. All have the 1915. \$1 affixed to small pieces. Likely from an archival source CAT £275. £190



**233**

SG D1-D6 Malayan Postal Union 1936-38. Postage due set of 6. 1c mounted mint, others unmounted CAT £170. £85





234

SG 103-121 Malaya Perak 1938-41 set of 9. 1c-\$.5. Lightly mounted mint. Scarce set CAT £1100. £575



235

SG 16 Malaysia Trengganu 1910-19. \$3 green & red/green. A fine fresh lightly mounted mint example CAT £300. £160



236

SG 23-25s Malaysia Trengganu 1921-41. \$1, \$3 & \$5 overprinted specimen, type D12. Fine mounted mint. £190



237

SG 44 Malaysia Trengganu 1921-41. \$5 green & red, watermark script. A pristine very lightly mounted mint example CAT £650. £450



238

SG 45s Malaysia Trengganu 1921-41. £25 purple & blue, overprinted specimen, type D12. Lightly mounted mint. £325



239

SG 80s Malaysia Perak 1895-99. \$25 green & orange, overprinted specimen, type D12. A pristine unmounted mint example CAT £450. £420



240

SG 30 Malta 1886. 5/- rose. Fine mounted mint. Good colour & well centred CAT £120. £70



241

SG 30 Malta 1886. 5/- rose. Very fine used part Malta CDS, leaves Queens profile clear CAT £80. £50



242

SG 139 Malta 1922-26. £1 black & carmine. Lightly mounted mint CAT £150. £85



**243**

SG 17 Mauritius 1857-59. 1d red/brown, worn impression. Very fine used with a 'Paid' CDS. 4 margins CAT £950. £475



**244**

SG 38 Mauritius 1859. 2d blue intermediate impression. Fine used. 4 margins CAT £1400. £450



**245**

SG 44 Mauritius 1859. 2d pale blue. Very fine used with a crisp 'target' cancellation, good to large margins, shows slight doubling at foot and litho 'blister' flaws, initialed E.D (Lena) on reverse. A lovely example CAT £850. £575



**246**

SG 23 Montserrat 1903. 5/- black & red. Very fine used, part CDS, leaves Kings profile clear CAT £225. £175



**247**

SG 33 Montserrat 1904-08. 5/- black & scarlet. A very fine used CDS example CAT £200. £150



**248**

SG 45 Montserrat 1908-14. 2/- Fine mounted mint CAT £50. £15



**249**

SG 46 Montserrat 1908-14. 2/6. Fine mounted mint CAT £55. £15



**250**

SG 47 Montserrat 1908-14. 5/- red & green/yellow. Very fine used with a Montserrat CDS, March 5th 1910 CAT £95. £60



**251**

SG 49-50 Montserrat 1916-22. 1/2d to 5/-, overprinted specimen. Fine mounted mint CAT £250. £170



**252**

SG 59 Montserrat 1916-22. 5/- green, red/yellow. Unmounted mint CAT £65. £45



**253**

SG 63-68 Montserrat 1922. 1/2d to 5/- less SG 66 & SG 69, overprinted specimen. Fine mounted mint. £180





254

SG 2, 4 & 7 Morocco Agencies 1898-1900 varieties 'no tail to G'. Mint & used. £45



255

SG 9c, 10c, 11c & 12c Morocco Agencies 1899 variety hyphen between N.C. Fine fresh mounted mint example CAT £183. £55



256

SG 17c 18c, 19c Morocco Agencies 1903-1905 hyphen variety on 5c, 10c & 20c values. Fine fresh lightly mounted mint examples CAT £270. £180



257

SG 22 Morocco Agencies 1903-05. 1p black & carmine. Very fine used CAT £275. £130



258

SG 41 Morocco Agencies 1913. 2/6 dull reddish/purple. Very fine used CAT £250. £95



259

SG 73 Morocco Agencies 1935-37. 2/6 chocolate-brown. Fine unmounted mint CAT £55. £45



260

SG 123s Morocco Agencies 1907. 12p on 10/- ultramarine, overprinted specimen. A fresh fine mounted mint example. £90



261

SG 125 Morocco Agencies 1912. 12p on 10/- blue Somerset House printing. A pristine unmounted mint marginal example with 2 date



262

SG 138a Morocco Agencies 1914-26. 12p on 10/- indigo-blue, surcharge double, one albino. Very lightly mounted mint CAT £275. £150



263

SG 141 Morocco Agencies 1915. 12p on 10/- blue. A fine fresh lightly mounted mint example CAT £120. £75



264

SG 142 Morocco Agencies 1916. 3p on 2/6 chocolate-brown. A fine lightly mounted mint example CAT £32. £15



265

SG 22 Nauru 1916-23. 5/- bright carmine. Lightly mounted mint CAT £120. £25





**266**

SG 21 Nauru 1916-23. 2/6 brown. Very lightly mounted mint CAT £80. £45



**267**

SG 23d Nauru 1915. 10/- deep bright blue. Lightly mounted mint CAT £500. BPA cert. £275



**268**

SG 145bs Natal 1902. £20 green & red, overprinted specimen. A fine mounted mint example. £425



**269**

SG 165-171 Natal 1908-9 Estcourt Natal postage set of 7. Very fine used CAT £550. £375



**270**

SG 3 Newfoundland 1857. 2d yellowish-green. Fresh mint. 3 fine margins. Scarce CAT £2000. £425



**271**

SG 8 Newfoundland 8d scarlet-vermilion. Fine used. 4 close to large margins CAT £950. £250



**272**

SG 11 Newfoundland 1860. 3d green. Fine mounted mint. Full-large margins CAT £120. £95



**273**

SG 11 Newfoundland 1860. 3d green. Very fine used. Full-large margins CAT £190. £110

**274**

SG 20 Newfoundland 1862-64. 6d rose-lilac. Mint block of 16. Margins all round, 9 stamps unmounted others very lightly CAT £560+. £320







**275**

SG 205 New Guinea 1935. £5 emerald-green. Very fine used. Good colour & well centred CAT £450. £325



**276**

SG 204 New Guinea 1935. £2 bright violet. Very fine used. Good deep colour & well centred CAT £140. £85



**277**

SG 1 New South Wales 1850. 1d crimson lake (no clouds). Good used margins just clear to large CAT £600. £130



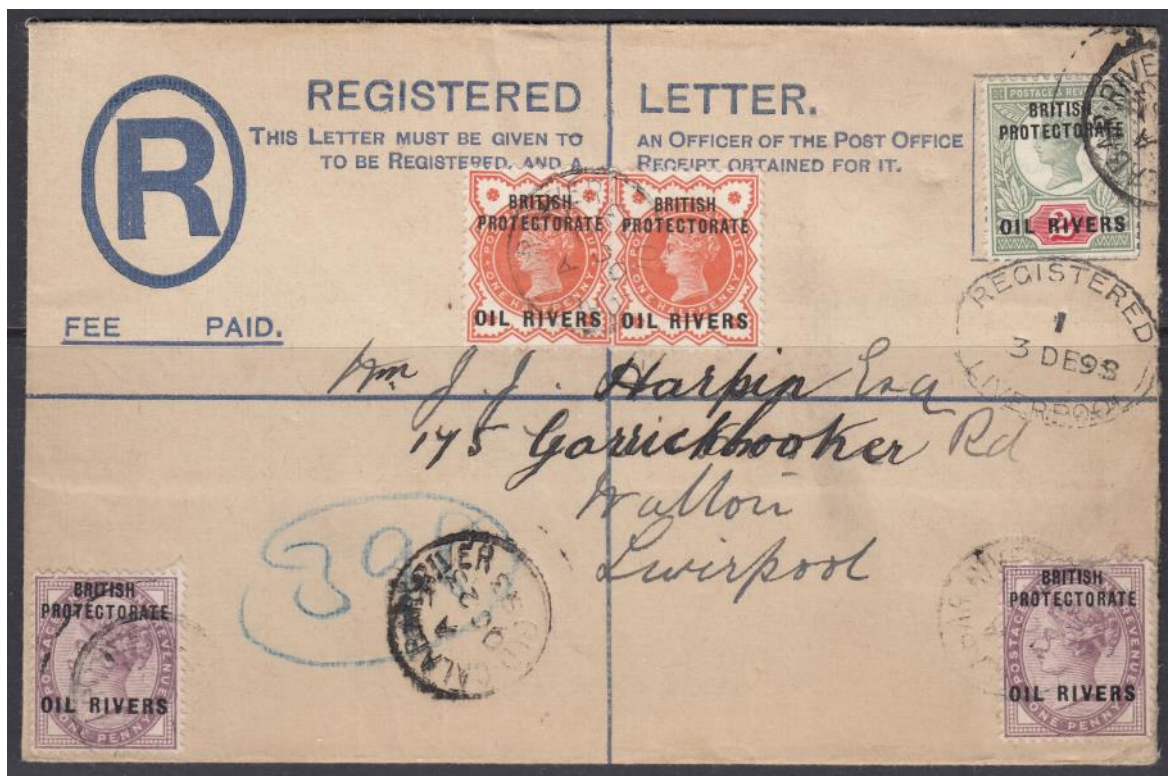
**278**

SG 13 New South Wales 1850. 1d carmine on laid paper. Good used. 4 good to large margins CAT £750. £240



**279**

SG 17 New South Wales 1850. 2d greyish blue. Very fine used. 4 good to huge margins CAT £200. £120



**280**

SG 1-3 Niger Coast Protectorate Oil rivers ½d pair 1d x2 singles & 2d. Fine used on registered envelope to Liverpool cancelled with old Calibar CDS's, Oct 23rd 1893 & registered 3rd Dec 1893 Liverpool oval. In clean conditions. £250



**281**

SG 1s-9s Niger Coast Protectorate 1892-94 Oil Rivers set of 6, overprinted specimen. ½d to 5d unmounted, 1/- mounted CAT £400. £320



**282**

SG 7a Niger Coast Protectorate 1893. 1/2d on half of 1d lilac, un-severed pair. Very fine used with part of neat '93' CDS CAT £450. £350



**283**

SG 11 Niger Coast Protectorate 1893. 1/2d on 2 1/2d hand stamped type 4 in green. Very fine used on small piece, Old Calabar, March 16th 1894 CDS with another strike alongside. BPA cert. £290



**284**

SG 11 Niger Coast Protectorate 1893. 1/2d on 2 1/2d hand stamped type 4 in green. Very fine used on piece, old Calabar, River, March 16th 1894 CDS. BPA cert. £270



**285**

SG 12 Niger Coast Protectorate 1893. 1/2d on 2 1/2d handstamped type 4 in vermillion. Very fine used on piece with Old Calabar, July 6th CDS. BPA cert. Scarce. £320



**286**

SG 20 Niger Coast Protectorate 1893. 1/2d on 2 handstamped type 7 in violet. Very fine used with an old Calabar River CDS, March 2nd 1894. £250



**287**

SG 20 Niger Coast Protectorate: Oil Rivers 1/2d on 2d with type 7 overprint in violet. A fine fresh mounted mint example CAT £500. David Brandon cert. £375



**288**

SG 21 Niger Coast Protectorate 1893. 1/2d on 2 1/2d handstamped type 7 in vermillion. Very fine used with almost full Forcados River CDS, Jan 3rd 1894. David Brandon cert. £200



**289**

SG 21 Niger Coast Protectorate: Oil rivers 1/2d on 2 1/2d with type 7 overprint. Fine unmounted mint CAT £400. £350



**290**

SG 25 Niger Coast Protectorate 1893. 1/2d on 2 1/2d handstamped type 8 in vermillion. Very lightly mounted mint. BPA cert CAT £500. £390



**291**

SG 25 Niger Coast Protectorate 1893. 1/2d on 2 1/2d handstamped type 8 in vermillion. Used on small piece with a full Bonny river CDS, Oct 6th 1894. Very fine used CAT £650. RPS cert. £525



**292**

SG 58 Niger Coast Protectorate 1894 surcharge '1' type 16 on half of 2d green & carmine. used on piece with OPOBO river CDS, Oct 1st 1894 CAT £375. £290



**293**

SG 48a Niger Coast Protectorate 1894. 2 1/2d carmine-lake, perf 13 1/2 x 14. Unmounted mint marginal block of 4 CAT £112. £85





**294**

SG 52b Niger Coast Protectorate 1894. 1d vermilion x3 on piece. 1 being bisected & tued by Benny squared circle. Scarce. £450



**295**

SG 35 Niger Coast Protectorate 1893. 1/2d on 2 1/2d hand-stamped type 10 in green. Very fine used with an old Calabar, Oct 2nd 1894 CDS CAT £450. £375



**296**

SG 65 Niger Coast Protectorate 1894. 1/2d on 2 1/2d blue. Fine used with old Calabar squared circle CAT £250. £130



**297**

SG 2-12 Nigeria 1914-29. £1 overprinted specimen. Fine mounted mint with extra shades (2 1/2d thinned). £240



**298**

SG 12 Nigeria 1914-29. £1 deep purple & black/red. A fine fresh unmounted mint, lower marginal example CAT £190. £165



**299**

SG 9 Nigeria 1893. Oil river protectorates provisional surcharges. 1/2d on 2d Jubilee (violet) type 3. Lightly mounted, very fresh with lovely colour CAT £550. RPS cert. £425



**300**

SG 12 Nigeria 1914-29. £1 deep purple & black/red. Fine unmounted mint CAT £190. £175



**301**

SG T48-49 Orange Free State (South Africa) British occupation 1900 'VR.1/AT' ovpts £1 & £4 top marginal examples. Fine unmounted mint. Scarce in this quality. £190



**302**

SG 135 Rhodesia 1910-13. 3d purple & yellow-ochre. A fine mounted mint example CAT £70. £20



**303**

SG 139 Rhodesia 1910-13. 4d brown, purple & orange. A fine mounted mint example with good colours & centring CAT £90. £40



**304**

SG 141 Rhodesia 1910-15. 5d purple-brown & olive-green. A fine fresh lightly mounted mint example CAT £65. £30



**305**

SG 155a Rhodesia 1910-13. 2/6 black & crimson, perf 14. Fine mounted mint & well centred CAT £350. £240



**306**

SG 159 Rhodesia 1910-13. 5/- vermilion & bright green, perf 14. A fine fresh very lightly mounted mint example CAT £325. £220



**307**

SG 160 Rhodesia 1910-13. 5/- scarlet & pale yellow-green. A very fine used, well centred example CAT £200. £130



**308**

SG 160a Rhodesia 1910-13. 5/- crimson & yellow-green. A very fine used CDS example CAT £200. £140



**309**

SG 160b Rhodesia 1910-13. 7/6 carmine & pale blue, perf 14. A fine fresh very lightly mounted mint example CAT £650. £425



**310**

SG 164 Rhodesia 1910-13. 10/- blue-green & orange, perf 14. A fine fresh lightly mounted mint example CAT £400. £250



**311**

SG 185 Rhodesia 8d black & purple, perf 13½. Very fine used part CDS CAT £250. £90



**312**

SG 234 Rhodesia 2/- black & brown, die 2, perf 14. Lightly mounted mint & well centred CAT £100. £75



**313**

SG 236a Rhodesia 2/6 pale blue & drab brown. A fine lightly mounted mint example. Very scarce CAT £1400. £675



**314**

SG 237 Rhodesia 1913. 3/- chestnut & bright blue, die 2, perf 14. Fine mounted mint CAT £140. £75



**315**

SG 238 Rhodesia 1913. 5/- deep blue & yellow-green, die 2, perf 14. Fine mounted mint CAT £170. £95



**316**

SG 240 Rhodesia 1913. 7/6 blackish-purple & slate black, die 2, perf 14. Mounted mint CAT £375. £220





**317**

SG 241 Rhodesia 1913. 10/- deep rose-red & light green, die 2, perf 14. Fine mounted mint CAT £225. £175



**318**

SG 242s Rhodesia 1913-13 Admiral £1 black & reddish-purple, overprinted specimen (type w2). Mounted mint. Well centred, good colour. £240



**319**

SG 242 Rhodesia 1913-17. £1 black & reddish purple. A pristine very lightly mounted mint example (Ex Lionheart). £350



**320**

SG 243 Rhodesia 1913-17. £1 black & violet. Lightly mounted mint CAT £475 (Ex Lionheart). £375



**321**

SG 251 Rhodesia 1913. 5/- blue & yellow-green, die 2, perf 15. Unmounted mint CAT £225. £200



**322**

SG 253 Rhodesia 10/- brown, lake & light green, perf 15. A fine lightly mounted mint example CAT £225. £130



**323**

SG 279 Rhodesia £1 black & deep purple, die 111, perf 14. A fine fresh very lightly mounted mint example CAT £600. £475



**324**

SG 308 Rhodesia 1923. 7/6 purple-brown & indigo, die 3b, perf 14. Fine unmounted mint. £240



**325**

SG 309 Rhodesia 1922-24. 10/- crimson & bright yellow-brown, die 3b, perf 14. Fine mounted mint CAT £275. £160



**326**

SG 310 Rhodesia 1922. 10/- bright carmine & dull yellowish-green, die 3b, perf 14. Lightly mounted mint CAT £300. £220



**327**

SG 320 Rhodesia 1923. 3/- red-brown & grey-blue, die 3b, perf 15. Unmounted mint. £175



**328**

SG 126-45 Sarawak 1945. 1c-£10. Pristine unmounted mint CAT £550. £450





**329**

SG 126-45 Sarawak 1945 B.M.A definitive set of 20. Lightly mounted mint. \$4, \$5 & \$10 being unmounted CAT £550. £375



**330**

Sarawak Revenue stamps 1918. \$4, \$5 & \$10. Lightly mounted mint. Scarce. £240



**331**

SG 8 Tasmania 1853. 4d orange. Very fine used. 4 close/good margins CAT £450. £150



**332**

SG 9 Tasmania 1853-54. 4d pale orange, plate 1, state 2. Very fine used. Full margins CAT £450. BPA cert. £350



**333**

SG 74s-88s Tanganyika 1922-24. 5c-£1 each overprinted specimen. A pristine very lightly mounted mint set of 15 CAT £900. £675



**334**

SG 93-107 Tanganyika 1927-31. 5c-£1 overprinted specimen set of 16. Fine mounted mint. 3/- value has diagonal crease CAT £400. £250





335

Togo 1914 registered cover. SG H4, H5, H12a (tiny 'Y' in penny) & H28. Very fine used with Lome 25th May 1915 CDS's back-stamped London 17-6-1915 & Basel 18-6-1915. A fine clean cover. BPA cert. £375



336

Togo 1914 registered letter to Switzerland SG H17, H18, H19, H27 & H28. Very fine used. Peter Holcombe cert. £275





**337**

SG 1-12 Tristan Da Cunha 1952 definitive set. Pristine unmounted mint CAT £140. £110



**338**

SG 12-13 Turks Islands 1881. ½ on 1/- lilac, setenant vertical pair showing '½' types 4 and 5 from setting 4 to 6. Fresh large part original gum. Very fine. RPS cert CAT £435+. £275



**339**

SG 115-126 Turks & Caicos 1909-11 set. ¼d to 3/- . Lightly mounted mint CAT £110. £75



**340**

SG 189-92 Western Samoa 1935-42. 2/6-£1. Lightly mounted mint CAT £160. £110



**341**

SG 212 Western Samoa 1945-53. £2 bright purple. Unmounted mint CAT £200. £175



**342**

SG 232-235 Western Samoa 1955. 5/- to £2 Postal Fiscals. Unmounted mint CAT £90. £65



**343**

SG 260 Zanzibar 1913. 10r green & brown. Very fine used CAT £425. £240



**344**

SG 295 Zanzibar 1921-29. 10r green & brown. Very fine used CAT £500. £275





345

SG 310s-322s Zanzibar 1936 set of 13. Perforated, specimen type D20. Fine mounted mint CAT £275. £190



346

Falklands 1938-50. 1/2d, 1d, 2d, 2 1/2d, 4d, 6d, 9d & 1/- on small pieces. Superb used with 1st day of issue CDS's, 3rd Jan 1938. £85





**347**

SG 160 Falklands 1938. 2/6 slate. Superb used on small piece cancelled 1st day of issue with a Port Stanley CDS, 3rd Jan 1938. £40



**348**

SG 161 & 162 Falklands 1938. 5/- & 10/- on small piece. Superb used with a Port Stanley 1st day of issue CDS, 3rd Jan 1938. £220



(Reduced in size)

**349**

Valentine embossed envelope sent to Miss Middleton, The Polygon Levenshulme posted Feb 13th 1863 with part insert. In good condition for age. £175





350

St Vincent, postal history. 1900 registered cover to Germany bearing 1885. 5/- tied by Kingstown CDS, 17th Jan 1900. London registered oval transit on face, registered label and arrival cancel on reverse. A nice clean item. £220



351

SG 9 Nova Scotia 1860-73. 1c jet black. Fine unmounted mint marginal block of 50 CAT £250. £125  
(Reduced in size)

EBAY/HIPSTAMP - STEVEALLEN777

WWW.STEVENALLENSTAMPS.COM

EMAIL: STEVEALLEN-ORDERS@LIVE.CO.UK  
TEL: +44(0)2392 253 133

SUBSCRIBE FOR FREE WITH YOUR EMAIL ADDRESS  
ON WWW.STEVENALLENSTAMPS.COM TO GET ALL  
OUR MAILING LISTS AND FUTURE SPECIAL OFFERS

CHEQUES MADE PAYABLE TO BRITISH & COLONIAL STAMPS LTD

BRITISH & COLONIAL STAMPS CO.  
CUTLERS FARM BARN  
NEWLANDS LANE  
PURBROOK  
PO7 6TN

BARCLAYS ,  
81A LONDON ROAD,  
WATERLOOVILLE, PO7 7ER  
IBAN: GBS3 BARC 2069 3423 7460 54  
SWIFT IBAN BIC: BARCGB22  
ACCOUNT NUMBER: 23746054  
BRANCH SORT CODE: 20-69-34

**PayPal**

