

BRITISH AND COLONIAL STAMPS

MARCH PART ONE



98

VIEW OUR ONLINE SHOP & LISTS-
WWW.STEVENALLENSTAMPS.COM

10% DISCOUNT ON ORDERS OVER £200
15% DISCOUNT ON ORDERS OVER £500

EMAIL: STEVEALLEN-ORDERS@LIVE.CO.UK
TEL: 02392 253 133



1

SG DP20. 1840 1d Rainbow colour trial in pale red, marginal pair. In superb condition. £3200



2

SG 2 1d black plate 1b lettered AH. A very fine lightly mounted mint example with fine/large margins CAT £12,500. £3600



3

SG 3 1d grey-black plate 3 lettered EF. Fine mounted mint. 4 good margins, scarce plate in mint condition CAT £20,000. £4200



4

SG 2 1d black plate 5 lettered OD. A fine lightly mounted mint example. 4 fine margins CAT £12,500. BPA cert. £4800



5

SG 2 1d black plate 5 lettered CG. A fine fresh mounted mint example. 4 good margins CAT £12,500. £3200



6

SG 2 1d black plate 7 lettered RC. A fresh mounted mint example. 4 fine margins CAT £13,500. £3200



7

SG 3 1d grey-black plate 1a, very worn plate lettered RD. Very fine used with an almost full red Maltese cross. 4 fine margins. £475



8

SG 3 1d grey-black plate 1a lettered BI. Very fine used with a red Maltese cross. 4 margins. £275



9

SG 2/7 matched trio lettered AJ. Plates 1a, 1b & 1c. Fine to very fine used. Full margins. £475



10

SG 2 1d black plate 1b lettered LK. Very fine used part red Maltese cross leaving Queens profile clear. 4 margins. £375



11

SG 2/7 1d matched pair plate 1b lettered AD. Very fine used, full margins. £350



12

SG 2 1d black plate 1b with PJ re-cut letters. Very fine used with a full upright red Maltese cross. 4 fine margins. £325



13

SG 2 1d black plate 1b lettered KD. Very fine used with a black Maltese cross. 4 fine margins. £325



14

SG 3 1d grey-black plate 2 lettered IC. Very fine used with a brown Maltese cross. 4 fine margins CAT £3000. £750



15

SG 2 1d black plate 2 lettered MI. Very fine used with a full red Maltese cross. 4 good to large margins. £275



16

SG 1 1d black plate 2 lettered JF. Very fine used with a crisply struck deep red Maltese cross. 4 good to large margins. £325



17

SG 1 1d intense black plate 2 lettered AA. Very fine used with a crisply struck red Maltese cross. 4 fine margins. A lovely example. £325



18

SG 2 1d black plate 2 lettered RA. Very fine used with a crisply struck full Maltese cross in red. 4 margins. £275



19

SG 2 1d black plate 2 lettered NC. Very fine used with a part crisply struck red Maltese cross. 4 margins. £275



20

SG 2 1d black plate 2 lettered HD. Very fine used with a red Maltese cross. 4 large margins. £325



21

SG 2 1d black plate 3 lettered II. Very fine used with a crisply struck red Maltese cross. 4 fine margins. £320



22

SG 2 1d black plate 3 lettered KG. Very fine used with an upright crisply struck red Maltese cross. 4 fine margins. £325



23

SG 3 1d black plate 3 lettered SB. Very fine used with a red Maltese cross. 4 good/large margins. £275



24

SG 2 1d black plate 4 lettered SL. Very fine used with a red Maltese cross. 4 fine margins. £275



25

SG 2 1d black plate 4 lettered SK. Very fine used with a crisply struck red Maltese cross. 4 fine margins. £275



26

SG 3 1d black plate 5 lettered MB. Very fine used with an upright black Maltese cross. 4 large margins. £275



27

SG 3 1d grey-black plate 6 lettered NK. Very fine used with a deep red Maltese cross. 4 fine margins. £275



28

SG 1 1d intense black plate 6 lettered DB. Very fine used with a full red Maltese cross. 4 margins. £240



29

SG 2 1d black plate 6 lettered DF. Very fine used with a red Maltese cross. 4 good to large margins. £350



30

SG 2 1d black plate 6 lettered NC. Superb used with a part red Maltese cross, leaving Queens profile clear. 4 fine margins. £375



31

SG 2 1d black plate 6 lettered SF. Very fine used with a crisply struck upright black Maltese cross. 4 fine margins. £350



32

SG 2 1d black plate 7 lettered HB. Very fine used with a red Maltese cross. 4 margins. £240



33

SG 2 1d black plate 7 lettered RH. Very fine used with a crisply struck red Maltese cross. 4 fine margins. £320



34

SG 2 1d black plate 8 horizontal strip of 4 lettered LI-LL. Good used with black Maltese crosses. Almost full margins, touched in places. £1150



35

SG 2/7 1d matched pair plate 9 lettered LI. Very fine used with full margins. £325



36

SG 2 1d black plate 10 lettered KL (spec A66h). Very fine used with a full upright red Maltese cross. 4 good/large margins CAT £1500. £475



37

SG 3 1d grey-black plate eleven lettered SJ. Very fine used. 4 margins CAT £4600. £2200



38

SG 4 1840 2d deep full blue plate 2 strip of 3 lettered GC-GE. Very fine used with neat red Maltese cross. Full -good margins all round (SG spec DS7f) CAT £5250 as singles. A scarce multiple. £2600



39

SG 5 1840 2d blue plate 1 lettered LI. Superb used with a full upright red Maltese cross. 4 margins. £650



40

SG 5 1840 2d blue plate 2 lettered EC. Very fine used with a part black Maltese cross, leaving Queens profile clear. 4 margins. £475



41

SG 5 1840 2d blue plate 1 lettered DI. Very fine used with an 1844 type numeral postmark '255' Doncaster. 4 margins CAT £2500. £1100



42

SG 7 1d red-brown plate 5 lettered LE. Very fine used with a full Maltese cross cancel. 4 good to large margins. £120



43

SG 7 1d red-brown plate 10 lettered KL. Very fine used. 4 fine margins CAT £190. £75



44

SG 8 1d red-brown lettered LE. A fine fresh unmounted mint example. 4 fine margins CAT £600. £425



45

SG 8 1d red-brown. Superb used with a full crisply struck Belfast Maltese cross (soec B1tb) CAT £250. £170



46

SG 8 1d red-brown plate 26 lettered OF. Very fine used with a Dorchester Town CDS. 4 fine margins. £375



47

SG 8 1d red-brown horizontal strip of 4. Very fine used with '17' numerals. Full-good to huge margins. £75



48

SG B1ta1 1d red-brown cancelled with the distinctive Wotton-under-edge Maltese cross. Very fine used. 4 margins CAT £4500. £750



49

SG 8m 1d red-brown lettered GK. Very fine used with a number '9' in Maltese cross. 4 good to huge margins CAT £180. £85



50

SG 14 1841 2d blue plate 3 horizontal pair lettered CE-CF. Very fine used with Maltese cross cancels. 4 margins CAT £550. £190



51

SG 14 1841 2d blue plate 3 strip of 3 lettered NA-NC. Very fine used with crisply struck black Maltese crosses. Full margins CAT £875. £325



52

SG 14 1841 2d blue plate 4 horizontal strip of 3. Very fine used with '827' numerals (Uttoxeter). Full margins. RPS cert. £275



53

SG 142d blue plate 4 lettered PB. A fine fresh lightly mounted mint example. 3+ margins just touched at 'P' square CAT £5000. £475



54

SG 14 1841 2d blue plate 3 horizontal pair lettered EK-EL. Very fine used with Maltese cross cancels. Full fine margins CAT £550. £175



55

SG 14f 1841 2d blue plate 3 lettered TI. Very fine used with a crisply struck number '1' in Maltese cross. 4 margins. £525



56

SG 14f 1841 2d blue plate 3 lettered CB. Very fine used with a number '2' in Maltese cross. 4 margins CAT £700. £475



57

SG 14f 1841 2d blue plate 3 lettered GG. Very fine used with a number '4' in cross. 4 good to large margins. £525



58

SG 14f 1841 2d blue plate 3 lettered JE. Very fine used with a number '5' in Maltese cross. 4 fine margins. £575



59

SG 14f 1841 2d blue plate 3 lettered CE. Very fine used with a number '5' in Maltese cross. 4 close to good margins CAT £850. £320



60

SG 14f 1841 2d blue plate 3 lettered GJ. Very fine used with a crisply struck number '10' in Maltese cross. 4 margins CAT £1500. Scarce. £675



61

SG 14f 1841 2d blue plate 3 horizontal pair lettered IJ-IK. Very fine used with number '12' in Maltese crosses. Full fine margins CAT £1100. £275



62

SG 17 1d red-brown plate 181 pair. Very fine used with a single '62' Irish (Belfast) cancel. £130



63

SG 21 1d red-brown plate 7 block of 4. Very fine used with '918' numerals. A scarce multiple CAT £650. £325



64

SG 27 2d blue (plate 5) lettered NF. Very fine used '446' numeral, Liverpool. Well centred ofr this issue CAT £450. £190



65

SG 29 1d red-brown block of 4. Very fine used with Queen steet, Scottish box cancels CAT £300. £170



66

SG 34 2d blue plate 5 lettered KH. Fine unmounted mint CAT £2800. £1500



67

SG 36a 2d blue. Very fine used with a '26' London numeral CAT £325. £175



68

SG 40 1d plate 42 lettered EB. Very fine used on small piece with a Stevenson Scots local boxed cancel. £120



69

SG 40 1d rose-red plate 43. Very fine used block of 4 cancelled with '174' numerals & Hawick CDS's, July 29th 1860. £95



70

SG 47 2d deep blue plate 13. Very fine used block of 6 cancelled with Peterborough CDS's, £275



71

SG 48 1/2d rose-red plate 4. A fine fresh unmounted mint marginal pair with inscription CAT £300. 240



72

SG 48 1/2d rose-red plate 4. A fine unmounted mint marginal example with inscription CAT £150. £120



73

SG 54 1/- pale green. Fine mounted mint. 4 large margins CAT £24000. £7500



74

SG 57 10d deep brown. A fine fresh lightly mounted mint example. 4 clear to large margins CAT £15000. £4500



75

SG 58 6d mauve horizontal pair. Very fine used with '959' numerals, almost full margins just touched in places CAT £2000. £350



76

SG 59 6d dull lilac. A fine lightly mounted mint example CAT £19,500. £3600



77

SG 62 4d carmine, watermark small garter on blued paper. Very fine used part numeral, leaves Queens profile clear CAT £450. £150



78

SG 63 4d carmine, watermark medium garter. Very fine used part numeral. Good deep colour & well centred CAT £575. £240



79

SG 63 4d carmine on thick, highly glazed deep blued paper. A fine fresh lightly mounted mint example with good centring for this issue. Scarce in this quality CAT £14000. £7500



80

SG 66 4d rose-carmine. Very fine used with an upright London CDS, June 18th 1860. £175



81

SG 69 6d lilac. Fine used 'A25' Malta cancel. Good colour & well centred. £45



82

SG 77 3d pale carmine-rose. Very fine used with a Malta 1864 CDS & part numeral. £175



83

SG 78 spec J27. 1862 3d rose, type J3a with dots, plate 3 watermark emblems. Unused. A nice genuine example but has perfs cut off at foot. With RPS & BPA certs. Very scarce CAT £45000. £9500



84

SG 80 4d pale red. A fine fresh unmounted mint example CAT £2000. £1275



85

SG 86 9d bistre, overprinted specimen. Lightly mounted, good colour CAT £750. £375



86

SG 87 9d straw. Lightly mounted mint. Good colour & centring CAT £4000. £1275



87

SG J102. 1862 1/- deep green plate '2' imprimatur abnormal. Lightly mounted mint. 4 fine margins CAT £13500. Rare. £11000



88

SG 93 4d dull vermilion plate 9. Fine unmounted mint CAT £650. £525



89

SG 94 4d vermilion plate 11. Lightly mounted mint CAT £625. £275



90

SG 93 4d dull vermilion plate 13. Very fine used with a Malta CDS. £50



91

SG 95 4d deep vermilion plate 12. Very fine used with a Llandudno CDS, Aug 21st 1872. £45



92

SG 109 6df mauve plate 9. Very fine used with a Mark Lane CDS. £65



93

SG 110 9d straw. Very fine used with a Nuneaton CDS, Oct 24th 1872. £220



94

SG 110 9d straw. Very fine used with an upright Dundee, Aug 15th 1876 CDS. £190



95

SG 112 10d red-brown. Very fine used with Slough CDS's. £175



96

SG 114 10d deep red-brown. A fine fresh mounted mint example with good deep colour & well centred CAT £5000. £1100



97

SG 114 10d deep red-brown. Very fine used, Queens profile clear CAT £600. £130



98

SG 118 (spec J118) 2/- dull blue imprimatur. A fine fresh mounted mint example with plate number. £4500



99

SG 121 2/- brown lettered QC. A fine fresh lightly mounted mint example of this scarce Victorian high value. Good colour & well centred CAT £30000. £12500



100

SG 121 2/- brown. A superb used example cancelled with an upright Brighton H.P.O. CDS, July 28th 1880 in blue. Never seen in this quality. £6500



101

SG 121 2/- brown. A very fine used example cancelled with a Manchester 'box' CDS. Well centred & good deep colour CAT £4250. £2700



102

SG 117 1/- green plate 6. Very fine used with an '1172' telegraph office CDS. £40



103

SG 122 6d deep chestnut. Very fine used with a Piccadilly Circus CDS, May 2nd 1872. £65



104

SG 123 6d pale buff plate 11 marginal pair with part inscription cancelled with Wet-Dock, Ipswich CDS's, Oct 29th 1872. £130



105

SG 127 5/- pale rose plate 1 lettered CB. A fine fresh rare unmounted mint example CAT £9500. David Brandon cert. £6800



106

SG 127 5/- pale rose plate 2. Very fine used with a Hereford CDS, Aug 2nd 1882 CAT £1500. £475



107

1878 10/- green-grey watermark Maltese cross. Imperf plate 1 imprimatur lettered BD (SG spec J124 IM). Lightly mounted mint, full margins, good deep colour CAT £35000. BPA cert. Rare. £16500



108

SG 137 £5 orange. superb used with an upright Burnley CDS, 14th Nov 1899. Good deep colour & well centred. £3500



109

SG 141 2½d rosy-mauve plate 10. A fine fresh unmounted mint example with good colour & centring CAT £550. £475



110

SG 143 3d rose plate 14. A fine fresh unmounted mint example with good strong colour CAT £525. £425



111

SG 150 1/- green plate 9. Fine used marginal pair with inscription cancelled with Newcastle on tyne CDS's, June 29th 1874. £240



112

SG 150 1/- green plate 11. Very fine used part Mark Lane CDS. £120



113

SG 150 1/- green plate 12. Very fine used part numeral, leaving Queens profile clear CAT £160. £45



114

SG 150 1/- green plate 13. Very fine used with a crisply struck Glasgow CDS, Sept 23rd 1880. £120



115

SG 150 1/- green plate 13. Very fine used with a Birmingham CDS. £130



116

SG J62 1876. 4d vermilion imprimatur abnormal plate 16. A very fresh unmounted mint example CAT £15000. Rare. £12000



117

SG 152 4d vermilion. Very fine used part numeral, leaving Queens profile clear. Good deep colour & centring CAT £475. £150



118

SG 152 4d vermilion. Very fine used with 'A25' (Malta) cancel. £175



119

SG J66. 1887 4d sage-green abnormal imprimatur plate 17 lettered TE. A fine fresh mounted mint example. Lovely deep colour. 4 fine/large margins CAT £15000. Rare. £9500



120

SG 158 3d rose plate 21. A pristine unmounted mint example with good colour & centring CAT £500. £450



121

SG 158 3d rose plate 21, deep shade. Pristine unmounted mint. £450



122

SG 158 3d rose plate 20. Very fine used CAT £150. £85



123

SG 158 3d rose plate 21. Very fine used with a Lombard St 'box' CDS, Sept 1st 1882. £45



124

SG 161 6d grey plate 18 marginal block of 4, 3 stamps being unmounted, RL being very lightly mounted. Good colour & well centred. Scarce multiple, particularly in this quality CAT £2100 as a block. £1450



125

SG 163 1/- orange-brown plate 14 over-printed specimen. Pristine unmounted mint CAT £350. £290



126

SG spec K8c 1882. 1/- purple plate 14, type J26 watermark crown. Lightly mounted mint. Very scarce. RPS cert CAT £15000. £9500



127

SG spec K8c 1/- purple plate 14 imprimatur abnormal. Fine mounted mint. 4 large margins CAT £6000. £4500



128

SG 164 ½d deep green. Fine unmounted mint CAT £55. £30



129

SG 168a 2d deep rose. A very fine used CDS example CAT £120. £40



130

SG 180 5/- rose. Very fine used with a crisply struck Glasgow CDS, Aug 16th 1894 CAT £1250. £95



131

SG 186 £1 brown-lilac, watermark orbs. Very fine used with an upright London 'hooded' CDS. Good colour & well centred CAT £4500. £1650



132

SG 192 4d dull green. A fine fresh unmounted mint marginal example CAT £580. £420



133

SG 194 6d dull green. Fine unmounted mint. Good colour CAT £625. £475



134

SG 204 3d purple-on-orange. Superb used with a Ryde 1895 CDS. Fine deep colour (spec K32/2). Hendon cert. £275



135

SG 261 2/6 very pale purple. Fine unmounted mint Spec M49(1) CAT £675. £375



136

SG 261 2/- pale dull purple, chalky paper. Very fine used with a Tutbury CDS, March 24th 1908. £95



137

SG 261 2/6 pale dull purple, chalky paper. A very fine used CDS example CAT £180. £85



138

SG 262 2/6 dull purple, chalky paper. A fine unmounted mint example CAT £600. £475



139

SG 263 5/- bright carmine. Very fine used with a Jersey CDS, Dec 27th 1902. £95



140

SG 264. 1902-10. 5/- deep bright carmine. A fine fresh unmounted mint example. Lovely deep colour & well centred CAT £900. £675



141

SG 264 5/- deep bright carmine. Very fine used with a Dewsbury CDS, May 7th 1903. £95



142

SG 265s 10/- ultramarine, type 16. A fine fresh very lightly mounted mint example CAT £500. £275



143

SG 265 10/- ultramarine. Very fine used with an Alston Lane, Hackney CDS, Dec 22nd 1911 CAT £500. £275



144

SG 265 10/- ultramarine. A fine very lightly mounted mint example. Well centred, good colour CAT £1000. £450



145

SG 265 10/- deep ultramarine. A fine fresh lightly mounted mint example CAT £1000. £475



146

SG 268 1/2d dull green. A remarkable top of sheet misperf strip of 3. Unmounted mint. £475



147

SG 318 5/- carmine. A fine fresh very lightly mounted mint marginal example CAT £425. £275



148

SG 319 10/- blue lower corner marginal example, hinged in margins. Stamp being very lightly mounted CAT £1100. £650



149

SG 320 £1 deep green. Very lightly mounted mint corner marginal example. Well centred & good deep colour CAT £2000.
£875



150

Great Britain 1940 Centenary imprimaturs ½d-3d set of 6 from the British museum archive. Each with 'BPMA' hand stamp on reverse. The stamps are in pristine unmounted mint condition. Rare. £7500



151

Great Britain 1934 King George V 1½d imprimatur booklet pane of 8 with adverts. 2 panes as Spec No25(4). Arranged horizontally tete-beche from the British museum archives. Each with a 'BPMA' hand stamp on reverse. The block is in pristine unmounted mint condition CAT £44000. A George V rarity. £15000



152

Great Britain 1929 King George V tete-beche imprimaturs set of 3 watermark inverted. Each hand stamped on reverse 'BPMA'. All in pristine unmounted condition. Rare. £11000



153

Great Britain 1929 King George V imprimatur. SG 434a-436a. 1/2d, 1d & 1 1/2d watermark sideways set of 3. Each with 'BPMA' hand stamped on reverse. In pristine unmounted mint condition. Rare. £6500



154

Great Britain 1922 King George V (SG 362) 1 1/2d imprimatur tete-beche pair. Fine unmounted mint with 'BPMA' hand stamped on reverse. Rare CAT £20000. £5500



155

King George V 1913 Waterlow half crown colour trial in black on ungummed 'wrigley paper'. A fine fresh marginal example. Very scarce CAT £5500. £3800



156

King George V 1913 Waterlow half crown colour trial in rose-red on ungummed 'wrigley paper'. A fine fresh example with large margins. Very scarce CAT £5500. £3800



157

King George V 1913 Waterlow half crown colour trial in brown on ungummed 'wrigley paper'. A very fine example with full large margins. RPS cert when in a block of 4. Very scarce CAT £5500. £3800



158

SG 359 Spec N16/10. 1912 1d pink. Unmounted mint CAT 375. RPS cert when in a block of 4. £275



159

SG 372 2 1/2d deep bright blue. Fresh mounted mint (spec N21/15). RPS cert. £220



160

SG 399 2/6 deep sepia-brown. A fine fresh unmounted mint example with fine colour & well centred CAT £850. £575



161

SG 399 2/6 deep sepia-brown. A very fine used CDS example. £130



162

SG 400 2/6 sepia-brown. Superb used cancelled with a crisp light central CDS, leaving Kings profile clear. £150



163

SG 401 5/- carmine-red. Very fine used with a lightly placed Coventry CDS, 8th Nov 1915. Good deep colour & well centring (spec N66/3) CAT £450. £275



164

SG 403 £1 deep green spec N72(2). Very fine used with a Guernsey CDS. Good deep colour & well centred CAT £2000. £1350



165

SG 406. 1915 2/6 yellow-brown. A fine fresh unmounted mint example CAT £550. £375



166

SG 408 sepia-seal brown variety inverted watermark spec N64(13)f. Very lightly mounted mint. Good colour & well centred CAT £1250. £575



167

SG 411 10/- deep blue (worn plate). Very fine used with a neat thimble reg oval CDS, leaving Kings profile clear (spec N70/2) CAT £1000. £475



168

SG 412. 1915 10/- blue spec N70(1). A very fine fresh unmounted mint example CAT £4500. £2400



169

. SG 413a 2/6 olive-brown block of 4. Very fine used with Guernsey CDS's (spec N65/1). £290



170

SG 414 2/6 chocolate-brown. A fine fresh unmounted mint example CAT £325. £220



171

SG 414 2/6 variety on ribbed (laid) paper. A pristine very lightly mounted mint marginal example (SG spec N65/4v) CAT £400. £240



172

SG 415 2/6 reddish-brown marginal block of 8 from top of sheet. Upper string of stamps being pristine unmounted mint, lower strip lightly mounted. A scarce multiple. £1350



173

SG 415 2/6 reddish-brown strip of 3. Very fine used with neat 1921 oval reg cancel.
£140



174

SG 417 10/- dull grey. Very fine used with a London exchange CDS, 26th June 1920 CAT
£175. £85



175

SG 434wi-436wi. 1/2d-1 1/2d PUC with watermark inverted. Fine unmounted mint CAT £85. £50



176

SG 434a/436a. 1919. 1/2d to 1 1/2d watermark sideways. Fine unmounted mint. Good perfs
CAT £310. £150



177

SG 434a-436a. 1/2d to 1 1/2d PUC with watermark sideways. Fine unmounted mint CAT £310. £150



178

SG 440b 1934 1d scarlet variety printed on the gummed side. Unmounted mint (both sides). Very fresh and with good centring
CAT £1000. £750



179

(SG 441) 1934 1 1/2d colour trials imperf (large format) in red-brown, ultramarine, deep grey-green. Fine fresh 4 margin examples, red-brown & grey being unmounted CAT £520. £275



180

SG 450-452. 1934 2/6 to 10/- set of 3. Very fine used CDS examples CAT £190. £45



181

Great Britain 1939-48. 2/6-£1 King George VI arms, imprimaturs. SG 476-478b from the British museum & archives. Each with 'BPMA' hand stamp on reverse in set of 6 marginal singles, £1 being perforated. Only a small number of imprimaturs from this series exist. An extremely fine rare set of imprimaturs of the King George VI high values. £22,500



182

1936 Edward VIII. 1/2d to 2 1/2d imprimatur set of 4. Fine unmounted mint (each with NPM back stamp). Also a colour essay for the 2 1/2d value unmounted mint. Minor gum bend. BPA cert. Scarce. £3500



183

SG O9as 5/- I.R. official variety raised stop after 'R' overprinted specimen, type 11. A fresh very lightly mounted mint example. Very scarce (spec L7/2a,t). £1700



184

SG O27 £1 blue-green 1902-04. Fine used with Aberdeen CDS's. Well centred & good colour. Very scarce. £17500



185

SG O38 2d yellowish-green & carmine. Very fine used with a Parliament CDS, July 25th 1902 CAT £450. £240



186

SG O44 2½d purple Army official. Un-mounted mint marginal example CAT £50. £40



187

SG O45 6d purple/rose-red Army official. Pristine unmounted mint CAT £110. £75



188

SG O62 6d dull green GOVT parcels, overprinted specimen. A scarce pristine unmounted mint example, seldom seen in this quality. Wenvoe cert. £325



189

SG O63 9d GOVT parcels. A very fine used CDS example with nice deep colour CAT £1050. £325



190

SG O64 1/- orange-brown GOVT parcels, overprinted specimen. Fine unmounted mint CAT £325. Wenvoe cert. £240



191

SG O66 1887-90. 6d purple/rose-red GOVT parcels. A pristine very lightly mounted mint example CAT £275. Wenvoe cert. £150



192

SG O66s 6d purple-rose GOVT parcels, overprinted specimen. A fine fresh lightly mounted mint example CAT £250. £130



193

SG O67. 1887-90. 9d dull purple & blue. A fresh very lightly mounted mint example CAT £425. Wenvoe cert. £325



194

SG O67s 9d GOVT parcels, overprinted specimen, type 9. Pristine very lightly mounted mint. Wenvoe cert. £220



195

SG O71 4½d green & carmine GOVT parcels. A fine mounted mint example CAT £400. Wenvoe cert. £175



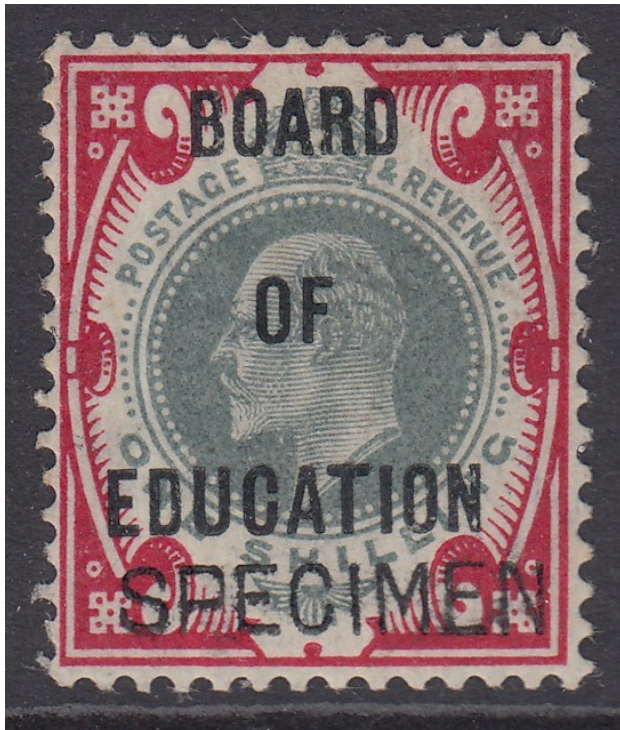
196

SG O76. 1902. 6d pale dull purple. A fine fresh unmounted mint example CAT £275. Wenvoe cert. £240



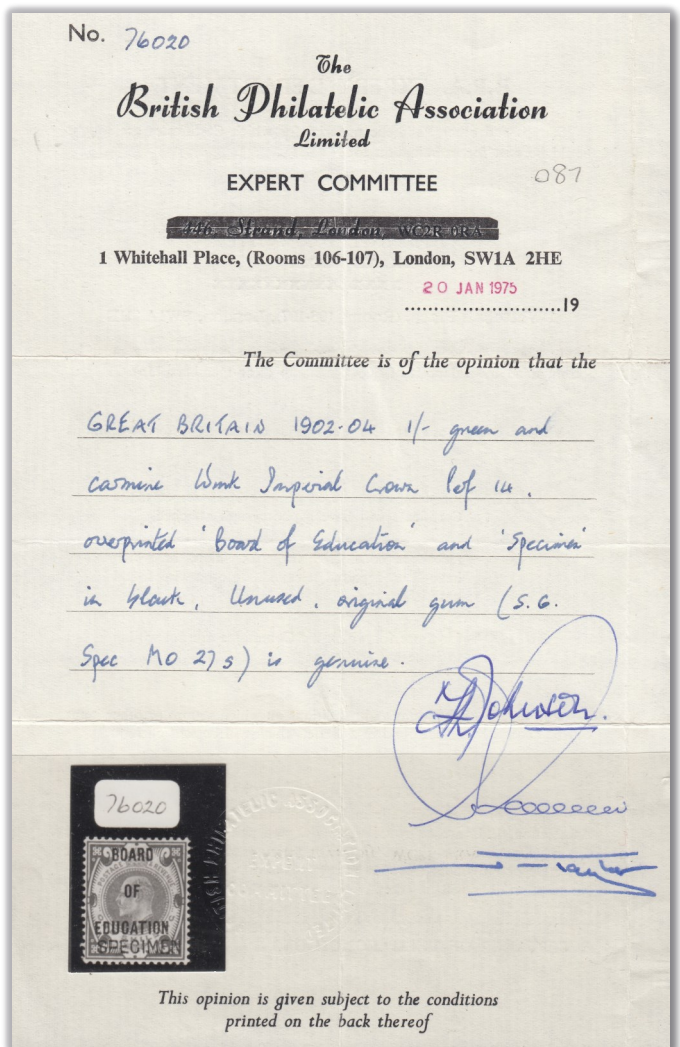
197

SG O77 9d dull purple & ultramarine GOVT parcels. A fine very lightly mounted mint example CAT £650. £420



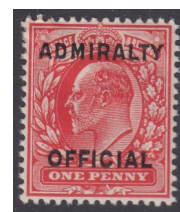
198

SG O87 1/- dull green & carmine Board of education, watermark crown, perf 14 overprinted specimen, type 16 in black (spec M027s).
A fine fresh lightly mounted mint example. Rare CAT £30000. £24000



199

SG O106 3d Admiralty official. A very fine used CDS example CAT £160. £85



200

SG 108 1903-04. 1d scarlet A.O. Pristine unmounted mint CAT £60. £35



201

SG T8 1/- telegraph plate 1 imperf plate proof, overprinted specimen, type 10 block of 4. Fine very lightly mounted mint. £390



202

SG T18 £5 orange telegraph. Fine used, good colour CAT £3200. £1275

EBAY/HIPSTAMP- STEVEALLEN777

WEBSITE-
WWW.STEVENALLENSTAMPS.COM

EMAIL: STEVEALLEN-ORDERS@LIVE.CO.UK
OVERSEAS TEL: +44(0)2392 253 133

CHEQUES MADE PAYABLE TO BRITISH & COLONIAL STAMPS LTD

BRITISH & COLONIAL STAMPS LTD.
CUTLERS FARM BARN
NEWLANDS LANE
WATERLOOVILLE
PO7 6TN

BARCLAYS ,
81A LONDON ROAD,
WATERLOOVILLE, PO7 7ER
IBAN: GB53 BARC 2069 3423 7460 54
SWIFT IBAN BIC: BARCGB22
ACCOUNT NUMBER: 23746054
BRANCH SORT CODE: 20-69-34

PayPal

