

British and colonial stamps

March Commonwealth



26

**view our online shop & lists-
www.stevenallenstamps.com**

**10% Discount on Orders over £200
15% Discount on Orders over £500**

Email: Steveallen-orders@live.co.uk

Tel: 02392 253 133/

07535200922



1

SG 1-12 Aden 1937. 1/2a-10r set of 10. Very lightly mounted mint. Lovely fresh condition CAT £1200. £475



2

SG 7 Antigua 1863-67. 1d vermilion. Fresh strip of 6. Lightly mounted/mounted mint. A scarce multiple CAT £1500. £575



3

SG 8 Antigua 1863-67. 6d green. Fine used 'A02' St Johns obliterator. £10



4

SG 10 Antigua 1863-67. 6d yellow-green block of 4. Very fine used with a 'A02' St Johns obliterators CAT £440. RPS cert. £325



5

SG 14w Antigua 1872. 1d scarlet, variety inverted watermark. Very fine used 'A02' St Johns obliterator CAT £65. £30



6

SG 21a Antigua 1882. 1/2d dull green block of 4, top left stamp with variety, top left triangle detached. Very lightly mounted mint CAT £350. £175



7

SG 22 Antigua 1884. 2 1/2d red-brown, watermark CA, perf 14, showing frame & lettering misplaced. Lightly mounted mint CAT £190. £75



8

SG 24 Antigua 1884. 1d carmine-red, perf 12. Fine unmounted mint block of 4 CAT £240. £175



9

SG 24 Antigua 1884. 1d carmine-red block of 8. Fine unmounted mint CAT £480. £350



10

SG 61 Antigua 1921-29. £1 purple & black/red. A fine fresh very lightly mounted mint example CAT £275. £150



11

SG 9 Australia 1913. 6d ultramarine. A fine fresh mounted mint example CAT £95. £30



12

SG 10 Australia 1913. 9d violet. A fine fresh lightly mounted mint example CAT £110. £45



13

SG 12 Australia 1913-14. 2/- brown, watermark 2, die 2, perf 12. A fine fresh, well centred, lightly mounted mint example CAT £275. £170



14

SG 13 Australia 1913-14. 5/- grey & yellow, watermark 2, die 2, perf 12. A very lightly mounted mint example with good colour & centring CAT £450. £275



15

SG 14 Australia 1913-14. 10/- grey & pink, watermark 2, die 2, perf 12. A fine fresh lightly mounted mint example. Good colours, & well centred for this issue CAT £950. £550



16

SG 15 Australia 1913-14. £1 brown & ultramarine, watermark 2, die 2, perf 12. A fine fresh mounted mint example with good colours. Scarce CAT £3000. £1250



17

SG 16 Australia 1913-14. £2 black & rose, watermark 2, die 2, perf 12. Lightly mounted mint. Fine colours & good centring for this issue. Very scarce in this quality CAT £7500. £4500



18

SG 25 Australia 1915. 2½d indigo, watermark 5, die 2, perf 12. Unmounted mint CAT £120. £85



19

SG 26 Australia 1915. 6d ultramarine. Very lightly mounted mint CAT £250. £120



20

SG 27 Australia 1915. 9d violet, watermark 5. Very lightly mounted mint CAT £225. £120



21

SG 28 Australia 1915. 1/- blue-green, watermark 5. Unmounted mint marginal example CAT £225. £150



22

SG 29 Australia 1915. 2/- brown, watermark 5. Very lightly mounted mint. Good colour & well centred CAT £800. £475



23

SG 30wa Australia 1915. 5/- grey & yellow, variety inverted watermark. Very lightly mounted mint. Well centred, good colours. Very scarce CAT £1400. Peter Holcombe cert. £950



24

SG 41 Australia 1915-27. 2/- brown, watermark 6, die 2, perf 12. A fine fresh lightly mounted mint example. Good colour & well centred CAT £300. £150



25

SG 43 Australia 1915-27. 10/- grey & pink, watermark 6, die 2. A fine fresh lightly mounted mint example. Well centred & good colours CAT £600. £325



26

SG 45a Australia 1915-27. £2 grey & crimson, watermark 6, perf 12. Lightly mounted mint. Good colours & well centred. Scarce CAT £4750. £2700



27

SG 75 Australia 1923-26. £1 grey. A fine fresh mounted mint example CAT £650. £275



28

SG 75 Australia 1923-24. £1 grey (die 2b), watermark 6, perf 12. A fine fresh very lightly mounted mint example with very good centring CAT £650. £450



29

SG 87a Australia 1926-30. 1 1/2d golden-scarlet. Unmounted mint CAT £25. £15



30

SG 100 Australia 3d dull ultramarine. Unmounted mint CAT £40. £30



31

SG 107 Australia 1929-30. 6d chestnut, watermark 7. Fine unmounted mint. Good colour & well centred CAT £40. £30



32

SG 108 Australia 1929-30. 9d violet. Unmounted mint, good deep colour CAT £50. £30



33

SG 109 Australia 1929-30. 1/- blue-green, watermark 7. Very lightly mounted mint CAT £75. £40



34

SG 110 Australia 1929-30. 2/- maroon, watermark 7. A fine fresh unmounted mint example with good colour & well centred CAT £150. £130



35

SG 111 Australia 1929-30. 5/- grey & yellow, watermark 7. Very lightly mounted mint CAT £275. £150



36

SG 112 Australia 1929-30. 10/- grey & pink, watermark 7. A fine fresh mounted mint example. Well centred & good colours CAT £500. £275



37

SG 114 Australia 1929-30. £2 black & rose, watermark 7, die 2, perf 12. Very lightly mounted mint CAT £4500. £2800



38

SG 132 Australia 1931-36. 6d chestnut. Very lightly mounted mint CAT £42. £25



39

SG 133 Australia 1931-36. 9d violet. A fine fresh unmounted mint example CAT £45. £35



40

SG 135 Australia 1931-36. 5/- grey & yellow. A fine fresh mounted mint marginal example CAT £180. £95



41

SG 136 Australia 1931-36. 10/- grey & pink, perf 12, die 2 (watermark 15). A fine fresh mounted mint example. Well centred & good colour CAT £450. £275



42

SG 136 Australia 1931-36. 10/- grey & pink. Very lightly mounted mint marginal example. Good colours & well centred CAT £450. £325



43

SG 137 Australia 1931-36. £1 grey. Very lightly mounted mint CAT £650. £375



44

SG 138 Australia 1931-36. £2 black & rose, perf 12, die 2 (watermark 15). A fine fresh unmounted mint marginal example CAT £4250. £3500



45

SG 138 Australia 1931-36. £2 black & rose. Lightly mounted mint. Scarce CAT £4250. £2500



46

SG D45-D60 Australia 1906-08. 1/2d-6d Postage due set. Fresh mounted mint examples CAT £1000. £275



47

SG 84 N.W Pacific Islands 1915-16. 10/- grey & pink. Very lightly mounted mint CAT £150. £95



48

SG 85 N.W Pacific Islands 1915-16. £1 brown & ultramarine. Very lightly mounted mint, well centred & good colours CAT £800. £575



49

SG 89 N.W Pacific Islands 1915-16. 9d violet. A fine fresh mounted mint example. £10



50

SG 91 N.W Pacific Islands 1915-16. 2/- brown. Lightly mounted mint, vertical crease CAT £120. £20



51

SG 100 N.W Pacific Islands 1918. 1d on 5d brown. A fine fresh mounted mint example CAT £100. £35



52

SG 115 N.W Pacific Islands 1918-22. 2/- brown. Very lightly mounted mint. £20



53

SG 19 Western Australia 1857. 6d grey-black. Very fine used with 4 clear to large margins CAT £750. RPS cert. £425



54

SG 30 Bahrain 1938-41. 8a slate-violet. A fine fresh unmounted mint example CAT £350. £170



55

SG 10 British Guiana 1852. 4c black & deep blue, type 1 cancelled by Demerara CDS for December 14th 1853. Some surface rubbing, reverse thin & 2 creases. Very scarce CAT £12000. £1275



56

SG 10 British Guiana 1852. 4c black & deep blue, type 2 cancelled with Berbice CDS, Sept 16th 1853, vertical crease, usual light rubbing & reverse thin. 4 close/large margins. Very scarce CAT £12000. £1450



57

SG 20 British Guiana 1853-55. 4c pale blue. Very fine used with a part Demerara double-arc date stamp, 30th Oct 1856. 4 fine margins CAT £700. £525



58

SG 21 British Guiana 1860. Framed figures 4c blue. Very fine used 'A03' numeral. 4 fine-large margins CAT £800. £575



59

SG 188 British Guiana 1888-89. \$4 green. A fine fresh lightly mounted mint example CAT £600. £375



60

SG 2 British East Africa 1890. 1a on 2d grey-green & carmine. Very fine used with a part Mombasa CDS CAT £375. £250



61

SG 46 British East Africa 1895. 4r ultramarine. Lightly mounted mint CAT £250. £160



62

SG 80-85 British East Africa 1897. 1/2a-7 1/2a. fine fresh mounted mint set of 6 CAT £425. £240



63

SG 90 British East Africa 1897. 2 1/2 on 3a grey & red. A fine fresh mounted mint example CAT £400. £240



64

SG 93 British East Africa 1887-1903. 2r Very fine used with a blue Mombasa 31st Aug 1898 CDS CAT £170. £120



65

SG 93 British East Africa 1887-1903. 2r orange. Lightly mounted mint CAT £170. £95



66

SG 94 British East Africa 1887-1903. 3r deep violet. A fine fresh mounted mint example with good colour & well centred CAT £225. £130



67

SG 95 British East Africa 1887-1903. 4r carmine. Very fine used with a Mombasa CDS. Nice deep colour & well centred CAT £650. £240



68

SG 95 British East Africa 1897-1903. 4r carmine. A fine fresh mounted mint example CAT £550. £275



69

SG 96 British East Africa 1897-1903. 5r deep sepia. A fine fresh mounted mint example. Good deep colour & well centred CAT £475. £325



70

SG 97 British East Africa 1887-1903. 10r yellow-bistre. Very fine used with a part Mombasa CDS, leaving Queens profile clear CAT £800. £525



71

SG 97 British East Africa 1897-1903. 10r yellow-bistre. A fine fresh mounted mint example. Good colour & well centred CAT £650. £425



72

SG 37 British Solomon Islands 1914-23. 10/- green & red/green. Fine mounted mint CAT £100. £45



73

SG 40 British Solomon Islands 1922-31. 1d scarlet. Unmounted mint block of 4. £15



74

SG 48 British Solomon Islands 1922-31. 1/- black/emerald. Unmounted mint marginal block of 4. £15



75

SG 49 British Solomon Islands 1922-31. 2/- purple & blue/blue. Unmounted mint block of 4 CAT £128. £85



76

SG 50 British Solomon Islands 1922-31. 2/6 black & red/blue. Unmounted mint block of 4 CAT £80. £55



77

SG 51 British Solomon Islands 1922-31. 5/- green & red/pale yellow. Unmounted mint block of 4 CAT £240. £150



78

SG 52 British Solomon Islands 1914-23. £1 purple & black/red. Fine mounted mint CAT £250. £140



79

SG 8 Colony of Canada 1852-57. 3d brown-red pair. Fresh mint without gum. Full good to large margins CAT £6000. £1250



80

SG 18 Canada 1857. 3d red, machine made paper, neatly cancelled with a target obliterator. 4 fine margins CAT £450. David Brandon cert. £275



81

SG 30 Colony of Canada 1c deep rose, perf 12. A fresh mint example CAT £550. £150



82

SG 31 Colony of Canada 1859. 5c pale red. A fresh mounted mint example CAT £450. £95



83

SG 36 Canada 1859. 10c brown. Very fine used & well centred CAT £120. £45



84

SG 42 Canada 1859. 17c deep 'Prussian' blue. Very fine used CAT £110. £60



85

SG 47 Canada 1868-90. 1c red-brown. A fine fresh very lightly mounted mint example. Scarce in this quality CAT £750. £325



86

SG 48 Canada 1868-90. 2c grass-green. A fine fresh unmounted mint example. Scarce in this quality CAT £900. £475



87

SG 56a Canada 1868-90. 1c orange-yellow. A fine fresh very lightly mounted mint example. Scarce in this quality CAT £1100. £525



88

SG 56b Canada 1868-90. 1c pale orange-yellow. A fine fresh unmounted mint example. Scarce in this quality CAT £1200. £750



89

SG 60 Canada 1868-90. 12½c bright blue. A fine fresh lightly mounted mint example CAT £1000. £325



90

SG 61 Canada 1868-90. 15c deep red-dish-purple. A fine fresh unmounted mint example CAT £850. £450



91

SG 61b Canada 1868-90. 15c dull violet-grey. A fine fresh unmounted mint example CAT £250. £220



92

SG 61c Canada 1868-90. 15c dull grey-purple. Unmounted mint CAT £325. £220



93

SG 74 Canada 1870-90. 1c pale dull yellow. Fresh mint without gum CAT £70. £7.50



94

SG 75 Canada 1870-90. 1c bright yellow. Very lightly mounted mint CAT £50. £20



95

SG 78 Canada 1870-90. 2c grass-green. Fresh mint without gum CAT £75. £7.50



96

SG 85 Canada 1870-90. 5c olive-green. A fresh mint example without gum CAT £550. £45



97

SG 87 Canada 1870-90. 10c pale lilac-magenta. Fine mounted mint CAT £1000. £240



98

SG 115-116 Canada 1893. 20c vermilion & 50c blue. Fine unmounted mint CAT £525. £240



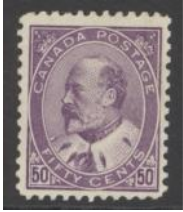
99

SG 129 Canada 1897. 6c brown. Unmounted mint, good colour & centring CAT £140. £85



100

SG 131 Canada 1897. 10c purple. Unmounted mint CAT £100. £45



101

SG 187 Canada 1903. 50c deep violet. A fine fresh unmounted mint example. Scarce in this quality CAT £500. £375



102

SG B11 Cameroon 1915. 2/- on 2m blue. Unmounted mint CAT £225. £190



103

SG B13 Cameroon 1915. 5/- on 5m carmine & black. Fine mounted mint CAT £300. £190



104

SG B13a Cameroon 1915. 5/- surcharge (type 2) on 1900-11 German Colonial 5m carmine & black marginal from the right of the sheet with variety inverted 'S'. Very lightly mounted mint. BPA cert CAT £1300. £975



105

SG 1 Cape of good hope 1853. 1d pale brick-red. Very fine used, full good to huge margins CAT £450. BPA cert. £325



106

SG 3 Cape of good hope 1853. 1d brick-red. A superb very fine used example with full fine margins CAT £350. £175



107

SG 5 Cape of good hope 1855-58. 1d brick red/cream toned paper. Very fine used. Full-large margins CAT £900. With certificate. £425



108

SG 5a Cape of good hope 1855-63. 1d rose. A fine fresh mounted mint example with full margins & good colour CAT £900. £325



109

SG 6 Cape of good hope 1855-63. 4d deep blue. A fine fresh mounted mint example with full fine/large margins CAT £1400. £450



110

SG 6 Cape of good hope 1855-63. 4d deep blue used on envelope. Full-large margins, Sept 27th 1858 oval in red on reverse. £275



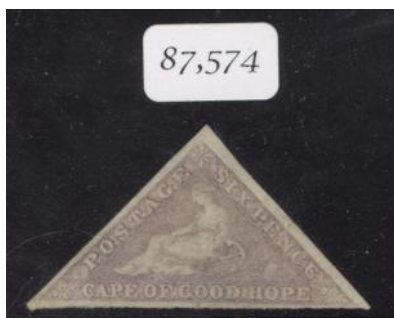
111

SG 6a Cape of good hope 1855-63. 4d blue. A fine fresh mounted mint example with full fine margins CAT £1100. £425



112

SG 6a Cape of good hope 1855-63. 4d blue. Very fine used on envelope, full-large margins. Burghers-Dorf, Aug 13th 1860, Craddock, Aug 15th oval cancels on reverse. £275



113

SG 7 Cape of good hope 1855-63. 6d pale rose-lilac. A fine fresh mounted mint example with good to large margins CAT £1200. £475



114

SG 7b Cape of good hope 1855-63. 6d deep rose. Used on envelope to Scotland via steamer 'Phoebe' paid Davenport Cape packet 27th April 1860 alongside backstamps in blue & red on reverse. £275



115

SG 7d Cape of good hope 1855-63. 6d slate purple/blued paper. Very fine used, full-fine margins CAT £1000. £375



116

SG 8 Cape of good hope 1855-63. 1/- yellow-green. Very fine used, full-fine margins CAT £325. £150



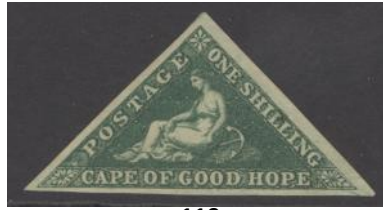
117

SG 8 Cape of good hope 1855-63. 1/- bright yellow-green. A fresh mounted mint example. Good margins just touched at top right side CAT £3750. RPS cert. Scarce. £475



118

SG 8b Cape of good hope 1855-63. 1/- deep dark green. A fine fresh mounted mint example, full-good to large margins CAT £550. £240



119

SG 8b Cape of good hope 1855-63. 1/- deep dark green. Lightly mounted mint, full good to large margins. A lovely example CAT £550. £375



120

SG 18 Cape of good hope 1863-64. 1d deep carmine-red. A fine fresh mounted mint example with good to large margins CAT £375. Sergio Sismondo cert. £175



121

SG 19a Cape of good hope 1863-64. 4d blue. Fine used on envelope. Full-good to huge margins, Swelldendam, Nov 13th 1863 back stamp in red. £240



122

SG 19a Cape of good hope 1863-64. 4d pale blue. A fine fresh mounted mint example. Full good to large margins CAT £350. BPA cert. £220



123

SG 20 Cape of good hope 1863-64. 6d bright mauve. An exceptional example. Very lightly mounted mint with full-large margins CAT £450. £325



124

SG 20 Cape of good hope 6d bright mauve. Very fine used, full-large margins CAT £550. £240



125

SG 21 Cape of good hope 1863-64. 1/- bright emerald-green. A superb mint example with perfect colour & fine/large margins CAT £650. RPS cert. £475



126

SG 21a Cape of good hope 1863-64. 1/- pale emerald-green. Mounted mint, full-fine margins CAT £1400. Friedl expert cert. £750



127

SG 3 Ceylon 1857-59. 2d green. Fine mounted mint. 4 margins CAT £250. £130



128

SG 17 Ceylon 1857-64. 1/2d dull mauve. A fine fresh mounted mint example. 4 fine margins CAT £190. £80



129

SG 320 Ceylon 1912-25. 50r dull purple. Unmounted mint, lovely deep colour & well centred. £750



130

SG 321s Ceylon 1912-25. 100r grey-black, overprinted specimen, watermark multiple crown CA. Unmounted mint CAT £425. £375



131

SG 321s Ceylon 1912-25. 100r grey-black, overprinted specimen. Lightly mounted mint CAT £425. £275



132

SG 322 Ceylon 1912-25. 500r dull green, overprinted specimen. A fine fresh lightly mounted mint example. Good colour & well centred. £675



133

SG 358 Ceylon 1921-32. 50r dull purple. Lightly mounted mint. Good colour & well centred CAT £850. £575



134

SG 359s Ceylon 1921-32. 100r brownish-grey, overprinted specimen. Lightly mounted mint & well centred. £475



135

SG 360s Ceylon 1921-32. 100r dull purple-blue, overprinted specimen. A fine fresh mounted mint example. Lovely deep colour & well centred CAT £550. £450



136

SG 7 Cyprus 1881. 1/2d on 1d red plate 215. Very lightly mounted mint. Scarce CAT £800. £425



137

SG 9aa Cyprus 1881 half penny type 5 (13mm) on 1d red plate 205, variety surcharged doubled. Fine mounted mint. Scarce CAT £800. £450



138

SG 9ab Cyprus 1881 half penny type 5 (13mm) on 1d red plate 215 variety surcharged doubled. Fine mounted mint, well centred CAT £450. £240



139

SG 11-15 Cyprus 1881. 1/2pi-6pi watermark crown CC. Fine to very fine used set CAT £960. £240



140

SG 59 Cyprus 1902-04. 45pi dull purple & ultramarine. Superb used, part Cyprus 'box' CDS, leaves Kings profile clear CAT £500. £320



141

SG 12 East Africa & Uganda 1903-04. 4r grey & emerald-green, overprinted specimen. Unmounted mint, good colour & well centred. £150



142

SG 13 East Africa & Uganda 1903-04. 5r grey & red. A fine fresh mounted mint example with good colours & centring CAT £250. £130



143

SG 13 East Africa & Uganda 1903-04. 5r grey & red. Very fine used CAT £400. £175



144

SG 14 East Africa & Uganda 1903. 10r grey & ultramarine. Very fine used. Good colour & well centred CAT £750. £425



145

SG 14a East Africa & Uganda 1903-04. 10/- grey & ultramarine, chalky paper. A fine fresh mounted mint example CAT £650. £220



146

SG 16s East Africa & Uganda 1903-04. 50r grey & red-brown, overprinted specimen. Mounted mint, very fresh. Good deep colour & well centred. £375



147

SG 29 East Africa & Uganda 1904-07. 4d grey & emerald-green. Very lightly mounted mint, good colour & well centred CAT £180. £130



148

SG 30 East Africa & Uganda 1904-07. 5r grey & red. A fine fresh mounted mint example CAT £200. £90



149

SG 31 East Africa & Uganda 1904-07. 10r grey & ultramarine. Very lightly mounted mint CAT £450. £280



150

SG 32 East Africa & Uganda 1904-07. 20r grey & stone. Lightly mounted mint. Good colour & well centred CAT £1000. £675



151

SG 59 East Africa & Uganda 1912-21. 20r black & purple/red. A fine fresh lightly mounted mint example. Good colour & well centred CAT £500. £275



152

SG 60 East Africa & Uganda 1912-21. 20r purple & blue/blue. Very lightly mounted mint. Lovely deep colour CAT £600. £425



153

SG 61 East Africa & Uganda 1912-21. 50r dull rose-red & dull greyish-green. A fine fresh mounted mint example. Well centred CAT £900. £575



154

SG 62s East Africa & Uganda 1912-21. 100r purple & black, overprinted specimen. A fine fresh mounted mint example CAT £750. £450



155

SG 73 East Africa & Uganda 1921. 3r violet & green. A fine fresh mounted mint example. Well centred & good colours CAT £180. £95



156

SG 75 East Africa & Uganda 1921. 50r carmine & green, overprinted specimen. A wonderfully fresh lightly mounted mint example CAT £550. £475



157

SG FR1 Falklands 1869 'black frank'. A fine strike on small piece on thin wove paper with endorsements 'perf foam' and '2' in M/S (the latter in brown). Undoubtedly cut from an original cover, desirable thus. £90



158

SG FR2 Falklands 1876 'red frank'. A very fine strike on piece of white laid paper CAT £190. £140



159

SG 3 Falklands 1878-79. 6d blue-green, no watermark. Lightly mounted mint CAT £120. £60



160

SG 3 Falklands 1878-79. 6d blue-green. Very fine used part CDS, leaves Queens profile clear CAT £85. £45



161

SG 41 Falklands 1898. 2/6 deep blue. Very fine used. Good colour & well centred CAT £300. £220



162

SG 41 Falklands 1898. 2/6 deep blue. A fine fresh mounted mint example. Good deep colour & well centred CAT £275. £175



163

SG 41 & 42 Falklands 1898. 2/6 & 5/- overprinted specimen. Fine fresh lightly mounted mint examples CAT £650. £325



164

SG 49b Falklands 1904-12. 3/- deep green. Superb used with a crisply struck Port Stanley, June 4 1914 CDS CAT £160. £150



165

SG 50 Falklands 1904. 5/- red, overprinted specimen. A fine fresh very lightly mounted mint example with good deep colour & well centred. £220



166

SG 50 Falklands 1904-12. 5/- red. A fine fresh lightly mounted mint example CAT £225. £140



167

SG 50 Falklands 1904-12. 5/- red. Superb used with an upright crisply struck Port Stanley Island CDS, Oct 17th 1913. An exceptional example. £220



168

SG 67a Falklands 1914. 5/- reddish-maroon. Lightly mounted mint CAT £350. David Brandon cert. £220



169

SG 67b Falklands 1912-20. 5/- maroon. Lightly mounted mint, good colour & well centred CAT £140. £85 14



170

SG 68 Falklands 1912-20. 10/- red/green. A fine fresh lightly mounted mint example CAT £200. £130



171

SG 116-126 Falklands 1929-37 Whale & Penguin set of 11. 1/2d-£1. Lightly mounted mint CAT £700. £425



172

SG 127-138 Falklands 1933 Centenary 1/2d-£1 set of 12 'perf' specimen (horseshoe). Unmounted mint, rare in this condition CAT £4250. £3200



173

SG 135 Falklands 1933. 2/6 black & violet. A fine fresh unmounted mint example. Good deep colour & well centred CAT £250. £220



174

SG 136 Falklands 1933. 5/- black & yellow. A fine fresh unmounted mint example with good deep colour & centring CAT £1000. £850



175

SG 137 Falklands 1933. 10/- black & chestnut. Lightly mounted mint CAT £900. £575



176

SG 138 Falklands 1933. £1 black & carmine. A fine fresh lightly mounted mint example with good colours & centring CAT £2500. £1350



177

SG D2 Fiji 1917. 1d black. Fine mounted mint CAT £550. £175



178

SG 5 Fiji 1870. 1d black rose/on thin vertically ribbed paper. Fine mounted mint CAT £1200. £475



179

SG 23 Fiji 1875. 2d on 6c on 3d green.
A fine fresh mounted mint example.
Scarce CAT £900. £275



180

SG 124 Fiji 1906-12. £1 purple &
black. Very fine used part CDS CAT
£275. £190



181

SG 136 Fiji 1912-23. 5/- green & red/
yellow. Fine unmounted mint CAT £60.
£45



182

SG 137 Fiji 1912-23. £1 purple &
black/red. Very lightly mounted mint
CAT £275. £220



183

SG 137a Fiji 1912-23. £1 purple &
black/red. Fine unmounted mint CAT
£250. £220



184

SG 70a Gambia 1906. 1d on 3/- green & carmine
on yellow, variety surcharge double. Mounted
mint, overall slight gum toning. BPA cert (1952).
Very scarce CAT £1800. £675



185

SG 39-45 Gibraltar 1898. 1/2d-1/- set of 7, overprinted specimen. Very fine unmounted mint condition CAT £300+. £325



186

SG 52 Gibraltar 1903. 2/- green & blue. Very
lightly mounted mint. Good colour & well
centred CAT £150. £90



187

SG 54 Gibraltar 1903. 8/- dull purple &
black/blue. A fine fresh mounted mint
example CAT £180. £85



188

SG 62 Gibraltar 1904-08. 2/- green & blue. Very lightly mounted mint
CAT £140. £90



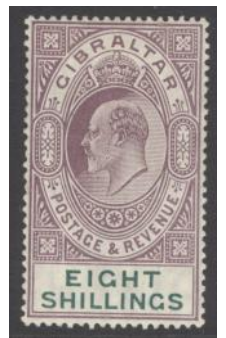
189

SG 63 Gibraltar 1904-08. 4/- deep purple
& green. A fine fresh very lightly mounted
mint example CAT £375. £230



190

SG 64 Gibraltar 1904-08. £1 deep purple & black/red.
A fine fresh very lightly mounted mint example CAT
£650. £425



191

SG 74 Gibraltar 1906-11. 8/- purple &
green. Very lightly mounted mint & well
centred CAT £325. £220



192

SG 101 Gibraltar 1921-27. 8/- dull purple & green. A fine fresh lightly mounted mint example CAT £350. £220



193

SG 107 Gibraltar 1925-32. £1 red-orange & black. A fine unmounted mint example CAT £190. £150



194

SG 108 Gibraltar 1925. £5 violet & black. A fine fresh lightly mounted mint example CAT £1600. £975



195

SG 118-120 Gibraltar 1937 Coronation set of 3 'Perf' specimen. Fine mounted mint CAT £190. £65



196

SG 132-133 Gibraltar 1946. 1/2d & 3d set of 2 'Perf' specimen. Lightly mounted mint CAT £160. £65



197

SG 24 Gilbert & Ellice Islands 1912. £1 purple & black/red. Very fine used CDS example. Scarce CAT £1600. £675



198

SG 35 Gilbert & Ellice Islands 1922-27. 10/- green & red/emerald. Very fine used part registered cancel CAT £400. £170



199

SG 3 Gold Coast 1875. 6d orange, perf 12 1/2 watermark crown CC. A fine fresh mounted mint example CAT £850. David Brandon cert. £425



200

SG 24s Gold Coast 1889. 20/- green & red, overprinted specimen. A fine fresh lightly mounted mint example. £275



201

SG 17s-21s British Post Office in China 1917-21. 50c-\$10 watermark MCA, overprinted specimen. Lightly mounted mint with fresh colours. A very scarce set CAT £2250. £1400



202

SG 16 Hong Kong 1917. \$5 green & red/blue-green, olive back. A fine fresh unmounted mint example CAT £300. £275



203

SG 17 Hong Kong, China 1917. \$10 purple & black/red. Fine unmounted mint (hinged in margin) CAT £600. £525



204

SG 27 Hong Kong, China 1917. \$1 purple & blue/blue. Fine unmounted mint CAT £80. £70



205

SG 28 Hong Kong, China 1922-27. \$2 carmine-red & grey-black. Very lightly mounted mint CAT £225. £130



206

SG 40 Hong Kong 1885. 20c on 30c orange-red. A fine fresh mounted mint example CAT £200. £85



207

SG 42 Hong Kong 1885. \$1 on 96c grey-olive. Very fine used with a Shanghai CDS, Aug 12th 1897 CAT £100. £60



208

SG 46 Hong Kong 1891. 50c on 48c dull purple. A fine fresh lightly mounted mint example CAT £350. £200



209

SG 50 Hong Kong 1891. \$1 on 96c purple on red paper with Chinese hand stamp. A fine fresh very lightly mounted mint example CAT £500. £325



210

SG 51 Hong Kong 1891. 2c carmine. A fine fresh unmounted mint example CAT £500. £425



211

SG 51 Hong Kong 1897. Jubilee 2c carmine. A fine fresh very lightly mounted mint CAT £500. £325



212

SG 51 Hong Kong 1891. 2c carmine. Very fine used CAT £140. £85



213

SG 51b Hong Kong 1897. Jubilee 2c carmine with short 'U' in Jubilee. Very lightly mounted mint. Very scarce in this quality CAT £900. £575



214

SG 53 Hong Kong 1898. \$1 on 96c grey-black without Chinese hand stamp. Very lightly mounted mint. Rare in this quality CAT £3250. BPA cert. £2200



215

SG 53as Hong Kong \$1 on 96c grey-black without additional Chinese hand stamp, overprinted specimen. A fine fresh lightly mounted mint example, position 41 broken 'M' being one of 12 possible examples CAT £600+. £525



216

SG 52a Hong Kong 1898. \$1 on 96c grey-black. A fine fresh lightly mounted mint example CAT £225. £140



217

SG 73 Hong Kong 1903. \$2 slate & scarlet, overprinted specimen. Lightly mounted mint. £190



218

SG 74 Hong Kong 1903. \$3 slate & dull blue, overprinted specimen. Very lightly mounted mint. £220



219

SG 75 Hong Kong 1903. \$5 purple & blue-green, overprinted specimen. A fine fresh mounted mint example. £250



220

SG 75 Hong Kong 1903. \$5 purple & blue-green. A very fine used CDS example CAT £650. £275



221

SG 76s Hong Kong 1903. \$10 slate & orange/blue, overprinted specimen. A fine fresh mounted mint example. Scarce. £375



222

SG 115 Hong Kong 1912-21. \$5 green & red on green back, watermark MCA. A fine fresh very lightly mounted mint example CAT £725. £475



223

SG 115a Hong Kong 1912-21. \$5 green & red/green, white back. A fine fresh lightly mounted mint example cat £650. £420



224

SG 115b Hong Kong 1912-21. \$5 green & red/green on blue/green olive back. Lightly mounted mint CAT £1200. £575



225

SG 116 Hong Kong 1912-21. \$10 purple & black, watermark MCA. Lightly mounted mint CAT £600. £450



226

SG 117s-132s Hong Kong 1921-37 watermark mult script CA. 1c-\$5 set of 8, overprinted or perfin specimen. Fine mounted mint CAT £2250. £1200



227

SG 3 India 1854. 1/2a pale blue, die 1. Fresh mint with 4 large margins CAT £425. £275



228

SG 6 India 1854. 1/2a blue, die 2. Fresh mint with 4 large margins CAT £275. £170



229

SG 11 India 1854. 1a deep red. Fine used. 4 large margins CAT £150. £85



230

SG 12 India 1854. 1d red, die 1. Fresh mint with 4 good margins CAT £1600. £425



231

SG 12 India 1854. 1a red. Very fine used. 4 good to huge margins CAT £110. £65



232

SG 13 India 1854. 1a deep red. Very fine used with a '38' diamond cancel. 4 fine/large margins CAT £150. £90



233

SG 14 India 1854. 1a dull red, die 2. Fresh mint pair. Full-good to large margins CAT £600. £275



234

SG 17-21. Ireland 1922. 2/6 to 10/- . Fine mounted mint CAT £375. £225



235

SG 17-21 Ireland 1922. 2/6-10/- . Fine to very fine used CAT £690. £420



236

SG 101 Ireland 1935. 10/- indigo. A fine fresh lightly mounted mint example. Good deep colour & well centred CAT £400. £240



237

SG 63 KUT 1912-21. 500r green & red, overprinted specimen. A fine fresh mounted mint example. Good colour & well centred CAT £1600. £975



238

SG 92s KUT 1922-27. £3 purple & yellow, overprinted specimen. Very lightly mounted mint. Good colour & centring, light gum bend. £290



239

SG 96 KUT 1922-27. £2 green & purple, overprinted specimen. Very lightly mounted mint. Good colour & well centred. £425



240

SG 97s KUT 1922-27. £3 purple & yellow. A fine fresh lightly mounted mint example CAT £475. £450



241

SG 98 KUT 1922-27. £4 black & magenta. A fine fresh very lightly mounted mint example. £675



242

SG 101 KUT 1922-27. £20 red & green, overprinted specimen. Very lightly mounted mint. Usual overall gum toning CAT £2000. £950



243

SG 102 KUT 1922-27. £25 black & red, overprinted specimen. A fine fresh lightly mounted mint example CAT £2500. £1650



244

SG 102s KUT 1922-27. £25 black & red, overprinted specimen in red. A fine fresh very lightly mounted mint example CAT £3200. £1650



245

SG 103 KUT 1922-27. £50 black & brown, overprinted specimen. Very lightly mounted mint. Usual slight overall gum toning. Scarce CAT £3250. £1900



246

SG O1 Kuwait 1923-24. 1/2a light green with overprint inverted. Unmounted mint. Krzysztof cert. £25



247

SG O3 Kuwait 1923-24. 1 1/2a chocolate with overprint inverted. Unmounted mint. Usual toned gum. Krzysztof cert. £50



248

SG O4 Kuwait 1923-24. 2a bright reddish-violet with overprint inverted. Lightly mounted mint. £45



249

SG O13 Kuwait 1923-24. 10r green & scarlet. A fine fresh very lightly mounted mint. Good colours & well centred CAT £275. £170



250

SG O14 Kuwait 1923-24. 15r blue & olive. A fine fresh very lightly mounted mint example. Good colours & well centred CAT £450. £275



251

SG 9b Leeward Islands 1897. 1/2d dull mauve with variety overprint double. Lightly mounted mint CAT £1400. RPS cert. £875



252

SG 16 Leeward Islands 1897. 5/- green & blue. A fine lightly mounted mint example CAT £500. RPS cert. £290



253

SG 9 Mafeking 1900. 6d on 3d purple/yellow. Very fine used with an upright Mafeking C.G.H. CDS CAT £450. £275



254

SG 12 Mafeking 1900. 3d on 1d lilac. Very fine used on small piece tied by a Mafeking CDS CAT £120. £65



255

SG 13 Mafeking 1900. 6d on 2d green & carmine. A fine fresh mint example without gum CAT £1600. Scarce. £275



256

SG 39 Mauritius 1859. 2d blue pair, worn impression on bluish paper. Very fine used, full good/large margins CAT £1900. Scarce multiple. £975



257

SG 43a Mauritius 1859. Dardenne 2d blue from the right of sheet. Very fine used with a 'paid' CDS. Large margins. Bolaffi & Dienna certificates. £850



258

SG 45 Trengganu Malaya 1921-41. \$25 purple & blue, overprinted specimen. A fine fresh mounted mint example CAT £350. £220



259

SG 21 Nauru 1916-23. 2/6 brown. Unmounted mint CAT £80. £65



260

SG 1 Newfoundland 1857-64. 1d brown-purple. Very fine used. 4 fine margins CAT £275. £175



261

SG 3 Newfoundland 1857-64. 3d yellowish-green. Very fine used. Full good/large margins CAT £475. £240



262

SG 5 Newfoundland 1857. 5d brownish-purple. A fine fresh mounted mint example. 4 close to huge margins CAT £375. £130



263

SG 17 Newfoundland 1862-64. 2d rose-lake. A fine fresh very lightly mounted mint example. 4 huge margins CAT £300. £175



264

SG 18 Newfoundland 1862-64. 4d rose-lake. A fine fresh mounted mint example. 4 margins. £20



265

SG 19 Newfoundland 1862-64. 5d chocolate-brown block of 4. Fine mounted mint with full margins CAT £400. £190



266

SG 19a Newfoundland 1862-64. 5d red-brown. Unmounted mint. 4 fine/huge margins CAT £90. £70



267

SG 20 Newfoundland 1862-64. 6d rose-lake. A fine fresh unmounted mint example. 4 fine margins CAT £35. £25



268

SG 20 Newfoundland 1862-64. 6d rose-lake. Lightly mounted mint block of 4. Full good/large margins. £85



269

SG 20 Newfoundland 1862-64. 6d rose-lake corner marginal block of 4, lower 2 stamps unmounted mint. £100



270

SG 20 Newfoundland 1862-64. 6d rose-lake. Fine used. 4 large margins. RPS cert CAT £100. £65



271

SG 21 Newfoundland 1862-64. 6½d rose-lake. Very fine used. 4 good/large margins CAT £450. £240



272

SG 22 Newfoundland 1862-64. 8d rose-lake. A fine fresh lightly mounted mint example. 4 large margins CAT £130. £75



273

SG 23 Newfoundland 1862-64. 1/- rose-lake. Unmounted mint. 4 huge margins. £50



274

SG 30 Newfoundland 1865. 24c blue. A fine fresh mounted mint block of 6 CAT £330. £150



275

SG 33 Newfoundland 1865. 12c chestnut. A fine fresh unmounted mint example CAT £70. £50



276

SG 40-43 Newfoundland 1876-79 Roulette 1c-5c. Fresh mint examples with & without gum
CAT £875. £110



277

SG 221 Newfoundland 1932. \$1.50 on \$1 deep blue. A fine fresh unmounted mint example
CAT £250. £200



278

SG 235 Newfoundland 1933. \$4.50 on 75c. A fine fresh unmounted mint example
CAT £275. £240



279

SG O1 New Guinea 1915. 1d on 3pf brown. A fine fresh mounted mint example
CAT £40. £15



280

SG O2 New Guinea 1915. 1d on 5pf green. Mounted mint
CAT £100. £20



281

SG 50 New Guinea 1914. 1d on 3pf brown. Very lightly mounted mint
CAT £110. £65



282

SG 51 New Guinea 1914. 1d on 5pf green. Lightly mounted mint
CAT £80. £45



283

SG 52 New Guinea 1914. 2d on 10pf carmine. Very lightly mounted mint
CAT £27. £15



284

SG 53 New Guinea 1914. 2d on 20pf ultramarine. Very lightly mounted mint
CAT £27. £15



285

SG 55 New Guinea 1914. 3d on 30pf black & orange/buff. Very lightly mounted mint
CAT £475. £350



286

SG 56 New Guinea 1914. 4d on 40pf black & carmine. Very lightly mounted
mint
CAT £200. £140



287

SG 57 New Guinea 1914. 5d on 50pf black & purple/buff. Very lightly mounted
mint
CAT £325. £240



288

SG 58 New Guinea 1914. 8d on 80pf black & carmine/rose. Very lightly mounted
mint
CAT £500. RPS cert. £375



289

SG 63 New Guinea 1915. 1d on 10pf carmine. Lightly mounted
mint
CAT £200. £120



290

SG 136 New Guinea 1925. £1 dull olive-green. Very lightly mounted mint
CAT £200. £130



291

SG 204 New Guinea 1935. £2 bright violet. Very lightly mounted mint. Nice deep colour
CAT £350. £240



292

SG 205 New Guinea 1935. 5£ emerald-green. Very lightly mounted mint. Good colour & well centred CAT £750. £525



293

SG 33 New Guinea 1915. 3d Rabaul, Deutsch, New Guinea registration label. A fine fresh mounted mint example CAT £275. £175



294

SG 36e New Guinea 1915. 3d Herbertshohe, Deutsch, New Guinea registration label surcharged. Fine mounted mint CAT £500. £325



295

SG 36e New Guinea 1915. 3d Herbertshohe, Deutsch, New Guinea registration label surcharged. Very lightly mounted mint. A fine example CAT £500. £375



296

SG 39 New Guinea 1915. 3d Manus, Deutsch, New Guinea registration label surcharged. Mounted mint, vertical gum crease CAT £325. £130



297

SG 41 New Guinea 1915. 3d Friedrich, Wilhelmshafen, Deutsch New Guinea registration label surcharged. Lightly mounted mint CAT £275. £175



298

SG 15 New South Wales 1850. 2d greyish-blue, plate 1. Early impressions. Very fine used. 4 margins. RPS cert CAT £650. £475



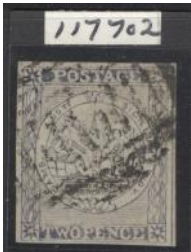
299

SG 17 New South Wales 1950. 2d greyish-blue. Very fine used. 4 large margins. RPS cert. £250



300

SG 25b New South Wales 1850. 2d dull blue. Good used, 4 good to large margins. Philatelic South Africa expert committee cert CAT £500. £240



301

SG 29 New South Wales 1950. 2d ultramarine. Fine used. 4 margins. RPS cert. £220



302

SG 1 Nevis 1862. 1d dull lake, perf 13. A fine fresh mint example without gum CAT £120. £25



303

SG 2 Nevis 1862. 4d rose, perf 13. Lightly mounted mint, good colour & well centred CAT £180. £80



304

SG 3 Nevis 1862. 6d grey-lilac, perf 13. A fine fresh mint example without gum CAT £225. £45



305

SG 4 Nevis 1862. 1/- green, perf 13. A fine fresh mint example without gum CAT £350. £65



306

SG 20 Nevis 1871-78. 1/- pale green corner marginal example, hinged in margin, stamp unmounted mint CAT £100. £85



307

SG 10 Nevis 1871-78. 1/- pale green. Un-mounted mint CAT £100. £80



308

SG 1-6 Nigeria, Niger Coast Protectorate 1892-94. 1/2d-1/- set of 6, overprinted specimen. Fine fresh mounted mint example CAT £400. £275



309

SG 25 Niger Coast Protectorate 1883. 1/2d in vermilion (type 8) on 2 1/2d purple on blue. Very fine used with a clear Old Calabar CDS CAT £750. RPS cert. £575



310

SG 31 Niger Coast Protectorate 1883. 1/2d on 2 1/2d purple on blue (type 9). Very fine used with an old Calabar CDS CAT £750. £450



311

SG 33 Niger Coast Protectorate 1883. 1/2d surcharge (type 9 in green) on blue paper, pair with old Calabar 22-10-94 CDS's CAT £1000. £675



312

SG 35 Niger Coast Protectorate 1893. 1/2d on 2 1/2d purple on blue (type 10 in green). Very fine used on small piece cancelled with an old Calabar CDS. BPA cert CAT £450. £325



313

SG 64 Niger Coast Protectorate 1894. 1/2d in blue on half of 1d orange-vermilion. Very fine used & tied to piece by 'Opodo river' CDS CAT £600. David Brandon cert. £350



314

SG 3 Nova Scotia 1851-60. 3d bright blue pair. Fresh mint without gum. Full good to large margins CAT £2800. £525



315

SG 4 New Brunswick 1851. 6d yellow. Mint without gum. 4 good/close margins. Scarce CAT £10,000. £750



316

SG D1 Papua New Guinea 1960. 6d on 7 1/2d blue. A fine fresh unmounted mint example with Krzysztof cert CAT £850. £575



317

SG 130 Sierra Leone 1912-21. £5 orange & green. A fine fresh mounted mint example. Good colours & well centred CAT £4500. £2200



318

Sierra Leone 1872. 1/- green plate proof. A fine fresh example with 4 fine margins. £275



319

Sierra Leone 1872. 4d blue plate proof. A fresh 4 margin example. £240



320

SG 1 South Africa, Vryburg 1899. 1/2 pence green. A fine fresh mounted mint example CAT £250. £95



321

SG 2 South Africa, Vryburg 1899. 1 pence rose. A fine fresh lightly mounted mint example CAT £300. £130



322

SG 6 St Christopher 1860. 1d magenta, perf 14. Very lightly mounted mint. Nice deep colour & well centred CAT £80. £45



323

SG 7 St Christopher 1870. 2½d red-brown, perf 14. Very lightly mounted mint. Good colour & centring CAT £200. £110



324

SG 8 St Christopher 1870. 4d blue, perf 14. A fine fresh mounted mint example CAT £225. Behr cert. £85



325

SG 9 St Christopher 1870. 6d green, perf 14. A fine fresh mounted mint example CAT £60. £20



326

SG 113 St Helena 1922-27. 15/- grey & purple. Very lightly mounted mint. Good colours & well centred CAT £1000. £650



327

SG 1 St Lucia 1860 (1d) rose-red. A fine fresh lightly mounted mint example CAT £100. £45



328

SG 2 St Lucia 1860 (4d) blue. A fine fresh lightly mounted mint example CAT £225. £110



329

SG 3 St Lucia 1860 (6d) green. A fine fresh lightly mounted mint example CAT £300. £150



330

SG 11 St Vincent 1862. 1/- slate-grey. Lightly mounted mint CAT £275. Behr cert. £130



331

SG 42 St Vincent 1883-84. ½d green. A fresh mounted mint example CAT £100. £20



332

SG 44 St Vincent 1883-84. 6d bright green. A fine fresh mounted mint example CAT £160. £70



333

SG 45 St Vincent 1883-84. 1/- orange-vermilion. A fine fresh lightly mounted mint example with good centring & fine deep colour CAT £140. Behr cert. £85



334

SG 3 Turks Islands 1881. 1/- dull blue. A fresh mint example without gum CAT £130. £45



335

SG 7 Turks Islands 1881. ½d on 6d black. A fine fresh mounted mint example CAT £120. £65



336

SG 29 Turks Islands 1881. 2½d on 1/- lilac. A fine fresh mint example without gum CAT £650. BPA cert. £350



337

SG 29 Turks Islands 1881. 2½d on 1/- lilac. Mounted mint, part original gum, horizontal gum crease CAT £650. BPA cert. £275



338

SG 36 & 37 Turks Islands 1881. 2½ on 1/- lilac. Fine mint, vertical pair, different types of se-tenant. Very scarce CAT £1800. BPA cert. £1250



339

SG 37 Turks Islands 1881. 2½d on 1/- lilac. A fine mounted mint example CAT £1200. Peter Holcombe cert. £625



340

SG 43 Turks Islands 1881. 4 on 6d black. A fine mounted mint example CAT £140. £75



341

SG 45 Turks Islands 1881. 4 on 1/- lilac. A fine lightly mounted mint example CAT £550. £375



342

SG 10 Zululand 1883-93. 1/- dull green. Very lightly mounted mint. Good deep colour & well centred CAT £150. £95



343

SG 11 Zululand 1888-93. 5/- rose, overprinted specimen. A fine fresh lightly mounted mint example. Good deep colour & well centred CAT £750. £475



344

SG 11s Zululand 1883-93. 5/- rose, handstamped specimen. Very lightly mounted mint. £350



345

SG 28 Zululand 1894-96. £1 purple-red. A fine fresh very lightly mounted mint CAT £650. £425



346

SG 29 Zululand 1894-96. £5 purple & black/red, overprinted specimen. A fine fresh mounted mint example CAT £500. £275



347

SG 29s Zululand 1894-96. £5 purple & black/red. A fresh mounted mint example CAT £500. £240

Ebay/hipstamp- steveallen777

Website-
www.stevenallenstamps.com

Email: Steveallen-orders@live.co.uk
Overseas Tel: +44(0)2392 253 133

Cheques made payable to British & Colonial Stamps LTD

British & Colonial Stamps Ltd.
Cutlers Farm Barn
Newlands Lane
waterlooville
PO7 6TN

Barclays ,
81a London Road,
Waterlooville, PO7 7ER
IBAN: GB53 BARC 2069 3423 7460 54
SWIFT IBAN BIC: BARCGB22
ACCOUNT NUMBER: 23746054
BRANCH SORT CODE: 20-69-34

PayPal

