

British and colonial stamps

June part 2

Fine & rare Great Britain



91

view our online shop & lists-
www.stevenallenstamps.com

10% Discount on Orders over £200

15% Discount on Orders over £500

Email: Steveallen-orders@live.co.uk

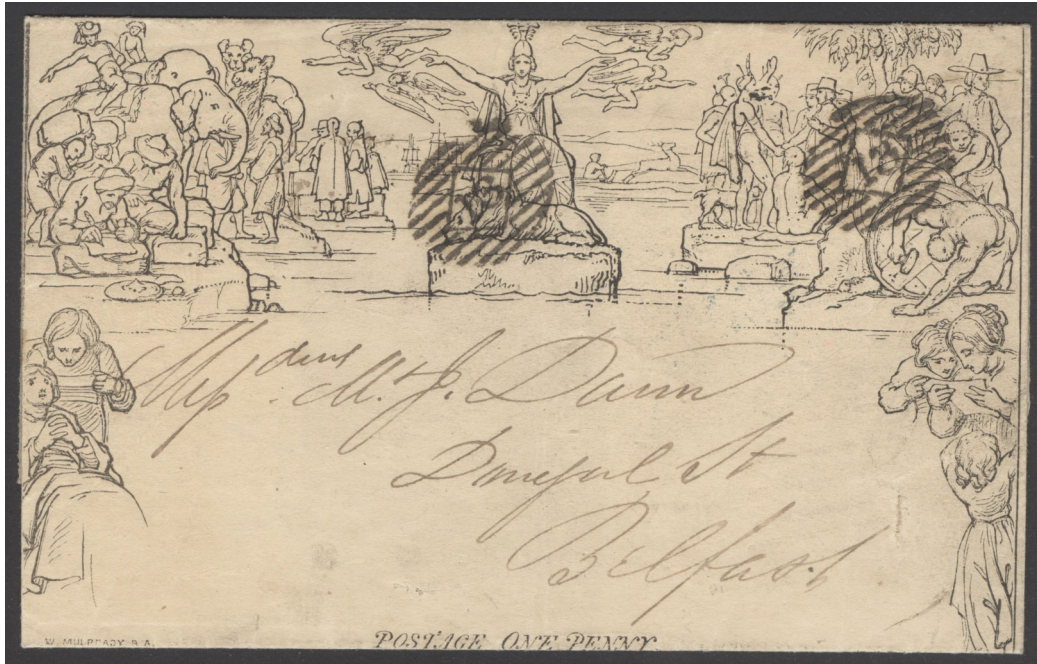
Tel: 02392 253 133





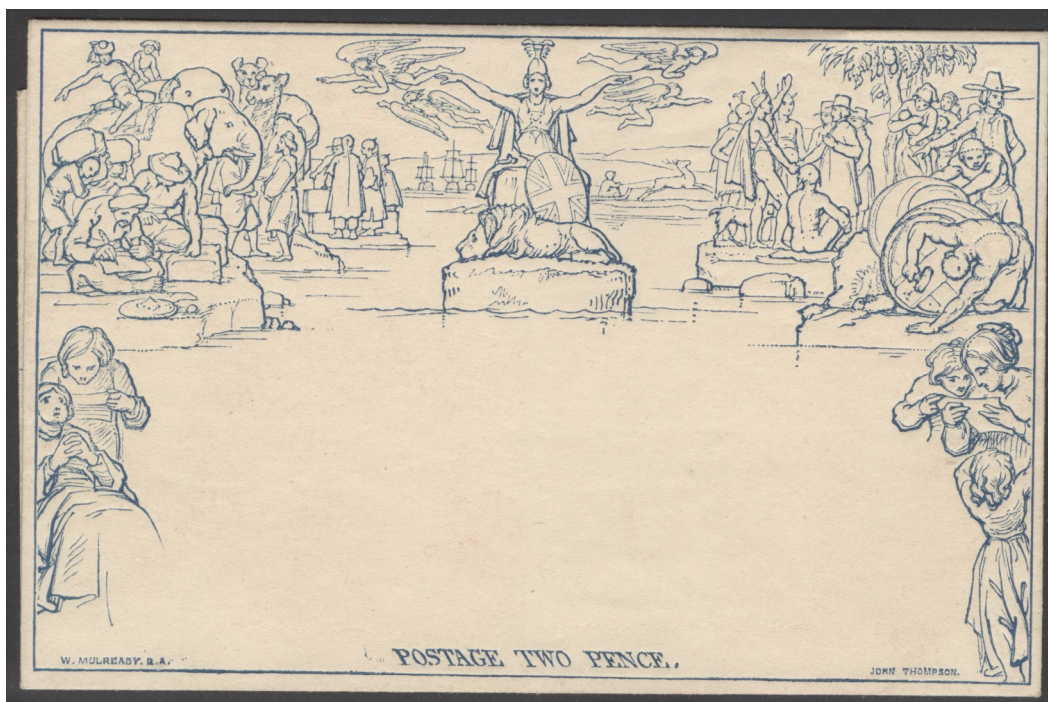
1

SG DP71(2) 1d brown 1850 Prince Consort essay. A fine fresh sheet marginal example without gum. £1275



2

1852 Mulready cover London to Belfast cancelled with two strikes of London No'13' obliteration, dated Jan 1852. £325



3

SG ME3 1840 2d blue letter sheet. Fine fresh mint condition CAT £400. £220



4

1840 Southgate number 5 'Pickwick' hand coloured envelope. Fine condition. £350



5

1840 Southgate number 2 'Ladies School' hand coloured envelope. Good condition, reverse flap tear. £325



PHILATELIC OPINION
 MIKE JACKSON
 PHILATELIST

No. 0529

August 2018

3 COTTESMORE AVENUE MELTON MOWBRAY LEICESTERSHIRE LE13 0HY ENGLAND
 mike@mjpublications.com

DESCRIPTION

1840 1d Black Plate 2 lettered DI on part entire letter used on the Second Sunday 17 May 1840.

OBSERVATIONS

Comparison with the letter positions and descriptions in Nissen confirms that the stamp is from Plate 2. It shows the trace of a horizontal guide-line in bottom margin described by Nissen (and which is visible on the Nissen stamp). The letter was posted in Newark (dateline of letter 'Newark 17 May 1840'; 'NEWARK/MY 17/1840' c.d.s.) and is addressed to London ('G/18 MY 18/1840' Inland Office morning duty c.d.s. on the back). The date in the Newark c.d.s. is incompletely inked, but the ink that is present is consistent with 'MY 17'; in any case, the dateline on the letter (17 May) and the London receiving c.d.s. (18 May) confirms the date. The stamp is obliterated by a red Maltese Cross but is not tied to the cover. The cross is lightly inked (apart from at top centre) and is almost completely on the stamp (*see illustration*), which explains the lack of obliterating ink on the cover (under a microscope I could find no traces of red ink). There is no evidence of any mark signifying prepayment in cash; and no evidence of a previous stamp being replaced (the lack of obliterating ink on the cover supporting this). In my opinion the stamp clearly belongs to the cover.

SOURCES

Charles Nissen, *The Plating of the Penny Black Postage Stamp of Great Britain 1840*, 1922.

Stanley Gibbons, *Great Britain Specialised Catalogue*, Vol. 1, 16th edn, 2011.

CONCLUSION

In my opinion, the item is an 1840 1d Black Plate 2 lettered DI on part entire letter used on the Second Sunday 17 May 1840, and is genuine. SG Spec. AS15tg.

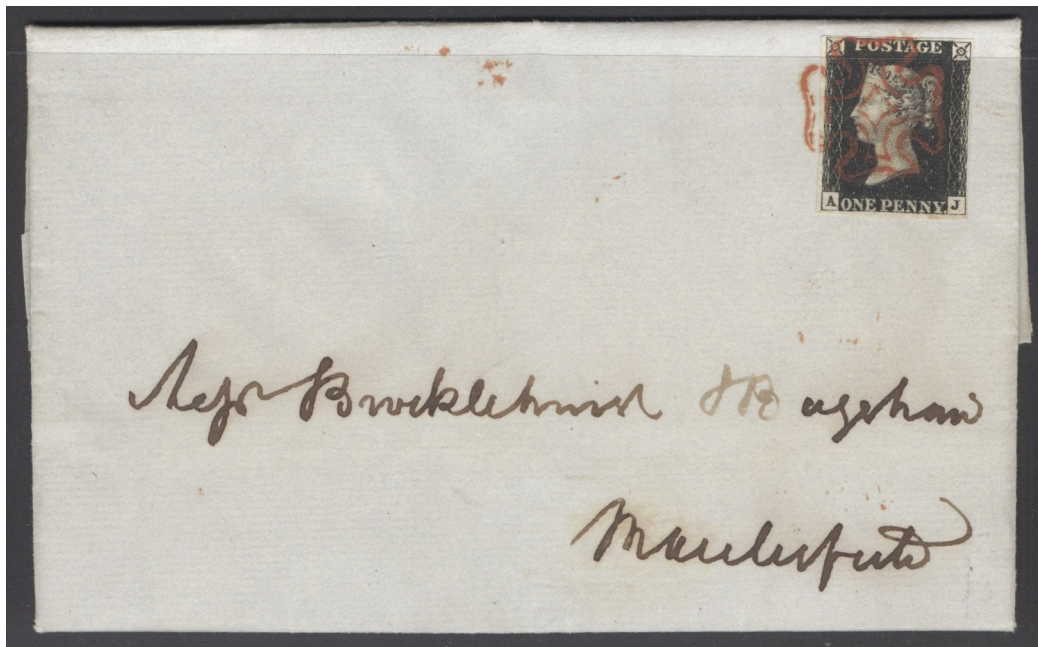
Mike Jackson

MIKE JACKSON



6

1840 1d black plate 2 lettered DI on entire letter posted on the second Sunday 17th May tied with a red Maltese cross. Full margins, Newark CDS for May 17th below the letter within, clearly dated 17th May 1840, reverse flap with a clear red May 18th London receiving CDS. A rare Sunday cover with Mike Jackson cert CAT £8000. £2400



7

SG 1 1d intense black plate 6 lettered AJ on entire. Superb used with an orange-red Maltese cross on Congleton, Feb 8th 1841. 4 fine margins, fresh & lovely quality (spec AS40) CAT £775+. £275



8

SG 2 1840 1d black plate 8 lettered GG on entire from Woodbridge, Suffolk to 4 Hayson Square, London. Sent on 15th Jan 1841 on scarce printed advertising sheet. Stamp tied with an orange/red Maltese cross. 4 fine margins. In nice clean condition. £525



9

SG 2 1d black plate 1a lettered TC. Very fine used with an upright black Maltese cross. 4 fine margins CAT £1100. £375



10

SG 3 1d grey-black plate 1a lettered IE. Very fine used with a crisply struck red Maltese cross. 4 fine margins. £240



11

SG 2 1d black plate 1a lettered GI. Very fine used with an orange-red Maltese cross. 4 fine margins. £275



12

SG 2 1d black plate 1b strip of 4 lettered LC-LF. Very fine used with red Maltese crosses. Full margins. A scarce multiple. £3200



13

SG 2 1d black plate 1b pair lettered FF-FG. Very fine used with deep red Maltese crosses. Full good to large margins. £525



14

SG 2/7 1d matched pair plate 2 lettered SB. Very fine used. 4 margin examples. £350



15

SG 2/7 1d matched pair plate 2 lettered BI. Very fine used 4 margin examples. £325



16

SG 2 1d black plate 2 lettered LI. Very fine used with a red Maltese cross. 4 margins. £275



17

SG 2 1d black plate 4 lettered IA. Superb used with an upright full red Maltese cross. 4 good margins. £450



18

SG 2 1d black plate 4 lettered KK. Very fine used with a crisply struck red Maltese cross. 4 fine margins. £275



19

SG 2 1d black plate 4 lettered IB. Very fine used with a pinkish-red Maltese cross. 4 fine margins. £275



20

SG 2 1d black plate 5 lettered DH. Very fine used with an upright red Maltese cross. 4 good/large margins. £275



21

SG 2 1d black plate 5 lettered PE. Very fine used with a lightly placed upright red Maltese cross. 4 margins. £240



22

SG 2 1d black plate 7 lettered FA. Very fine used with a crisply struck red Maltese cross. 4 fine margins. £275



23

SG 2 1d black plate 7 lettered JL with variety inverted watermark. Fine used with a red Maltese cross. 4 margins. Very scarce CAT £3750. £2200



24

SG 1 1d intense black plate 8 lettered AK. Very fine used with a finely struck red Maltese cross. 4 margins. £275



25

SG 1 1d intense black plate 9 lettered HJ. Very fine used, part black Maltese cross leaving Queens profile clear. 4 margins. £325



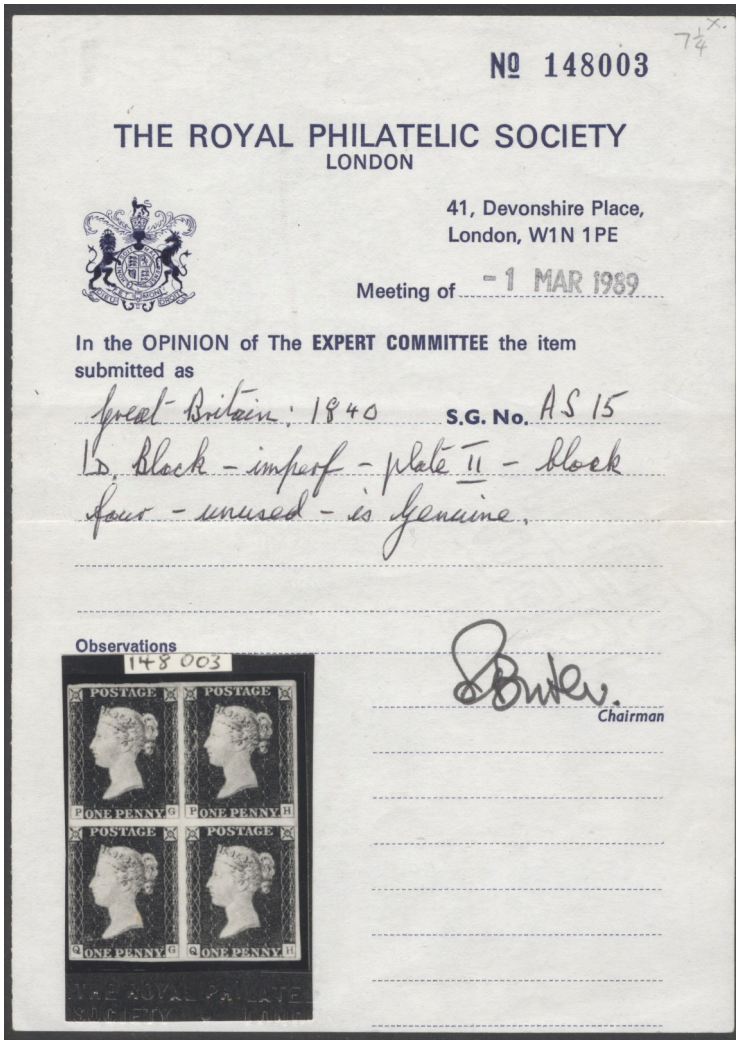
26

SG 2 1d black plate 10 lettered OE. Very fine used with a part black Maltese cross. 4 margins. £375



27

SG 3 1d black plate eleven lettered LB. Very fine used. 4 close/good margins CAT £4500. RPS cert. £2200



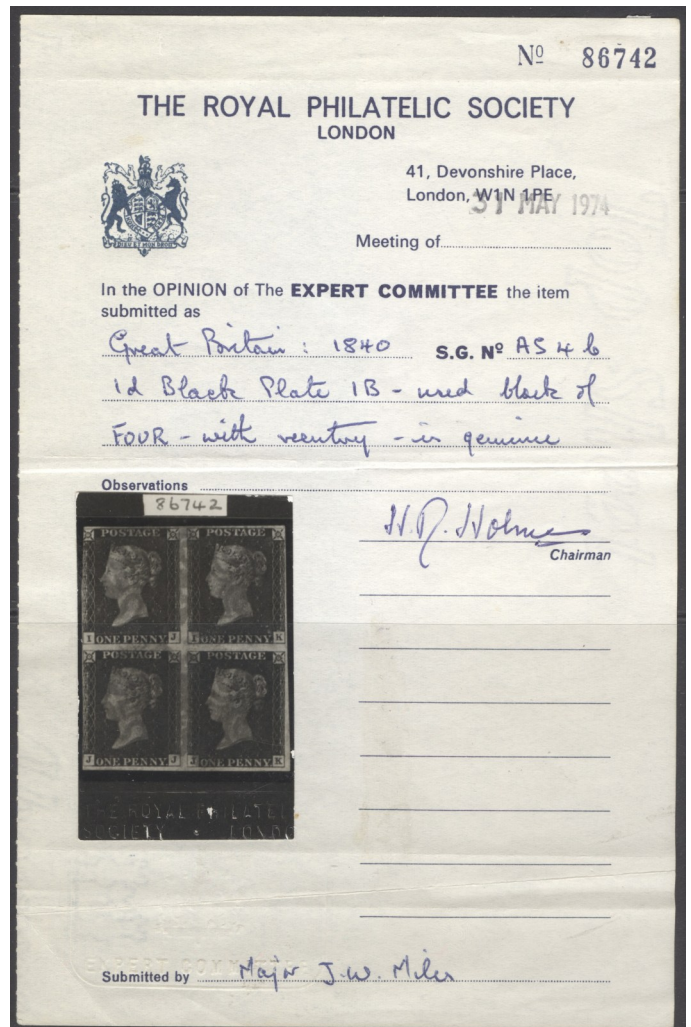
28

SG 3 1d grey-black plate 2 block of 4. Fine mounted mint with original gum. Full margins. A very rare multiple seldom seen in this quality CAT £100,000. RPS cert. £42,000



28a

SG 2 1d black plate 1b block of 4 with re-entry. Fine used with red Maltese crosses. Good to close margins just into at top left side CAT £16,000. RPS cert. £4500





29

SG 5i 1840 2d blue plate 2 lettered PA with variety inverted watermark. Very fine used with a black Maltese cross. 4 good to large margins CAT value unpriced by Gibbons. Rare. £4500



30

SG 5 1840 2d blue pair plate 1 lettered IB-IC. Very fine used with red Maltese crosses. Full margins. £1100



31

SG 6 1840 2d pale blue plate 1 lettered CK. Mounted mint, original gum. 4 good to close margins CAT £30,000. Very scarce. £8750



32

SG 7 1d red-brown plate 1b lettered NF. Very fine used. 4 fine margins CAT £375. £130



33

SG 8 1d red-brown with variety inverted 'S'. very lightly mounted mint. 4 margins CAT £400. £150



34

SG 8 1d red-brown plate 164. Very fine used with a dated CDS cancel. 4 fine margins. £275



35

SG 8 1d red-brown lettered AL plate 34. Very fine used with a Dublin type 2 Maltese cross. 4 fine/large margins. £85



36

SG 8 1d red-brown lettered OJ. Very fine used with a full almost upright red Maltese cross. Photocopy of RPS cert. £2200



37

SG 8 1d red-brown plate 76. Good used block of 12, horizontal crease on lower 'H' row. £325



38

SG 10 1d deep red-brown lettered GG. A wonderfully fresh unmounted mint example. 4 close/large margins CAT £600. £275



39

SG 14 1841 2d blue plate 4 lettered IE. A pristine unmounted mint example with full original gum. 4 close to large margins. Rarely seen in this quality CAT £3000. £2200



40

SG 14 1841 2d blue plate 4 lettered FH. A fine fresh scarce unmounted mint example. 4 margins CAT £3000. £2500



41

SG 14 1841 2d blue plate 4 strip of 3 cancelled in blue on small piece. Full close to huge margins CAT £2250. £475



42

SG 14 1841 2d blue plate 3 lettered GD. Very fine used with a Maltese cross cancel with dot in centre. 4 fine margins. £85



43

SG 14 1841 2d blue plate 3 strip of 4 lettered TE-TH. Fine used with Maltese cross cancels. Full margins. £325



44

SG 14f 1841 2d blue plate 3 lettered DB. Very fine used with a crisply struck '7' in Maltese cross. 4 good margins. £575



45

SG 14f 1841 2d blue plate 3 lettered RK. Very fine used with a number '8' in Maltese cross. 4 margins. £525



46

SG 14f 1841 2d blue plate 3 lettered IK. Very fine used with a number '9' in Maltese cross. 4 margins CAT £800. £575



47

SG 14f 1841 2d blue plate 3 lettered LL. Very fine used with a number '10' in Maltese cross. 4 margins CAT £1000. £675



48

SG 14f 1841 2d blue plate 3 pair lettered RK-RL. Very fine used with number '12' in Maltese crosses. Full margins CAT £700. £390



49

SG 14f 1841 2d blue strip of 3. Very fine used with number '12' in Maltese crosses. Full good to large margins CAT £1050. £425



50

SG 17 1d red-brown plate 167 strip of 3. Very fine used with '107' Bradford numeral. £65



51

SG 17 1d red-brown plate 194 pair lettered EG-EF. Very fine used, a single Irish cancel. £45



52

SG 17 1d red-brown plate 201 pair lettered GD-GE. Very fine used with London district numeral '19'. £35



53

SG 17 1d red-brown lettered EG plate 187. Very fine used, good colour & well centred. £15



54

Frank Ives Scudamore examiner hand stamp on SG 21 strip of 3. Fine mounted mint. £375



55

SG 22 1d orange-brown Spec C2(5) lettered GE. Very fine used with a '105' Bracknell numeral CAT £475. £130



56

SG 26 1d red-brown lettered RI. A fine fresh mounted mint example with good colour CAT £2500. £975



57

SG 27 2d blue (plate 5) lettered BF, perf 16, watermark large crown. Very fine used CAT £450. £190



58

SG 34 2d blue plate 5 lettered QD. A fine fresh mounted mint example. Good colour & well centred CAT £2800. £750



59

SG 36 1d rose-red lettered IJ. A fine fresh mounted mint example with good colour & centring CAT £2800. £1100



60

SG 36 1d rose-red. Very fine used with a Cork, April 19th 1858 CDS. £85



61

SG 36a 2d blue plate 6 watermark large crown, perf 16. Scarce strip of 3 lettered TH-TJ with '33' London numerals CAT £750. £425



62

SG 38 1d pale red plate 66 variety inverted watermark. Superb used with a part Devonport CDS. £175



63

SG Z153 1d rose-red plate 57. Very fine used with a Rodney-Hall, Jamaica, Feb 10th 1859 CDS. RPS cert. £325



64

SG 43 1d rose-red plate 89. Very fine used with a Portsmouth sorting carriage star postmark. £175



65

SG 43 1d rose-red plate 184. Very fine used with an Exeter CDS. £25



66

SG 43 1d rose-red plate 115 strip of 5 & a single used on small piece with '273' numerals (Oban), June 8th 1870. £25



67

SG 43 1d rose-red plate 88. A very scarce lightly mounted mint block of 4 with good deep colour. £975



68

SG 43 1d rose-red plate 114 block of 16. Very fresh with lovely deep colour. Unmounted mint, JJ with striking dot on chin flaw, stamp IJ with one perf loss, exceptionally scarce multiple, possibly the largest block known of this plate number CAT £4000. £3200



69

SG 43 1d rose-red plate 225 lettered QD. A fine fresh lightly mounted mint example CAT £2500. David Brandon cert. £1275



70

SG 43 1d rose-red plate 225. Very lightly mounted mint, good colour & centring CAT £2500. £1275



71

SG 63 4d carmine, watermark medium garter. Very fine used with a '258' numeral (Dover) CAT £400. £130



72

SG 64 4d pale carmine, watermark medium garter. Very fine used with a Newcastle, Aug 8th 1857 CDS. £475



73

SG 66 4d rose-carmine. A fine fresh lightly mounted mint example with good colour. £675



74

SG 66 4d rose-carmine. Very fine used with a crisply struck Glasgow, Jan 8th 1858 CDS. £130



75

SG 76 3d bright carmine. A fine fresh mounted mint example with good deep colour. £675



76

SG 80 4d pale red block of 4. Very fine used with Chatham, April 18th 1862 CDS's & '173' numerals. Scarce multiple. £375



77

SG 81 4d bright red. Very fine used with a Stirling, Sept 1st 1864 CDS. Nice deep colour. £150



78

SG 81 4d bright red. A fine fresh scarce unmounted mint example. £975



79

SG 82 4d pale red with (hair lines). A fine fresh very lightly mounted mint example CAT £1200. £575



80

SG 84 6d lilac. Lightly mounted mint. Very fresh, excellent centring & good deep colour. £750



81

SG 84 6d lilac overprinted specimen, type 9. Lightly mounted mint CAT £600. £250



82

SG 86 9d bistre. Very fine used with a Liverpool CDS, 5th July 1862. Good colour & well centred. £425



83

SG 87 9d straw. A fine fresh mounted mint example with good colour & well centred CAT £2000. £850



84

SG 90 1/- green. A fine fresh mounted mint example being well centred & having good deep colour CAT £3500. £1275



85

SG 90 1/- green block of 6 cancelled with 'A25' & Malta CDS's. Good colour, few minor tone spots, GC round corner, FA small closed tear. A very scarce multiple. £325



86

SG 95 4d deep vermilion plate 11. A fine fresh lightly mounted mint example, being particularly well centred. £240



87

SG 96 6d deep lilac plate 6. A fine fresh lightly mounted mint example with good deep colour CAT £3800. £1650



88

SG 96 6d deep lilac plate 6. Very fine used with a London, March 14th 1867 CDS. £220



89

SG 103 3d rose plate 7. Very fine used with a stock exchange CDS. £30



90

SG 109 6d mauve plate 8. A fine fresh mounted mint example with good colour CAT £750. £275



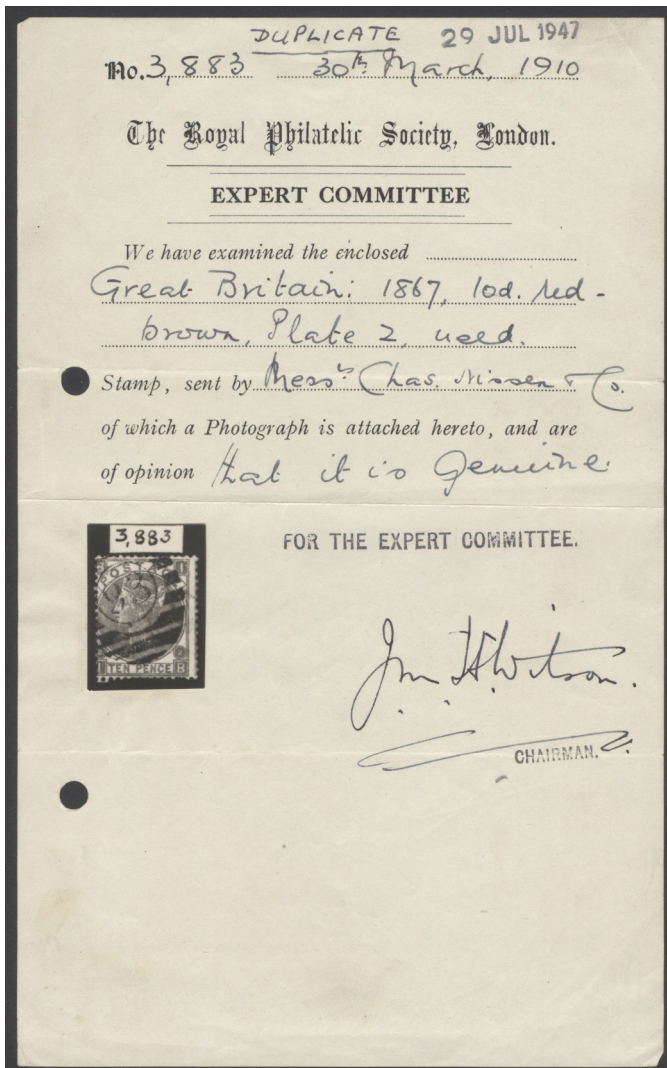
91

SG 109 6d mauve plate 9. A fine fresh mounted mint example CAT £600. £175



92

SG 110 9d straw. A fine fresh lightly mounted example with good deep colour & fine centring. £975



93

SG 112 10d red-brown plate 2 abnormal. Fine used. Very scarce. RPS cert. £8500



94

SG 121 2/- brown. Mint, good colour & well centred, reverse thins. Very scarce CAT £26,000. £2200



95

SG 121i 2/- brown variety inverted watermark. Fine used with 'A25' Malta obliteration. Very scarce. RPS cert (when in a pair). £3500



96

SG 122a 6d chestnut pair. Very fine used with Tynemouth, June 10th 1872 CDS's. £70



97

SG 146 6d deep grey plate 13. A fine fresh lightly mounted mint example. £275



98

SG 147 6d grey plate 14. Lightly mounted mint. £240



99

SG 147 6d grey plate 14. A fine fresh very lightly mounted mint example. £240



100

SG 147 6d grey plate 15. A fine fresh lightly mounted mint example CAT £450. £240



101

SG 147 6d grey plate 17. A fine fresh lightly mounted mint example CAT £650. £325



102

SG 151 1/- orange-brown, watermark spray. A fine fresh mint example without gum. Good colour & centring CAT £3000. £350



103

SG 152 4d vermilion. Fine mounted mint. Good colour & well centred CAT £2000. £575



104

SG 153 4d sage-green plate 16. Very fine used with an upright Redditch, April 7th 1879 CDS. £170



105

SG 156 8d orange. A fine fresh very lightly mounted mint example with good deep colour. £625



106

(SG 156) 8d orange imprimatur plate 2 abnormal. A fine fresh mounted mint example, good margins on 3 sides just into at base. Very scarce CAT £11000. £3750



107

SG 169 5d indigo. A fine fresh unmounted mint example. £625



108

SG 169 5d indigo re-joined strip of 4 cancelled with London 1881 'box' CDS's. £130



109

SG 158 3d rose plate 10. Very fine used with an upright London CDS. £95



110

SG 175 2/6 lilac on blued paper, overprinted specimen. A fine fresh lightly mounted mint example CAT £625. £325



111

SG 197 1/2d vermilion, variety inverted watermark. Very fine used CDS example, leaving Queens profile clear. £75



112

SG 202 3d purple/yellow. Very fine used strip of 3 with Chiswick, Bedford park, May 13th 1898 CDS's. £15



113

SG 203 3d deep purple & yellow. A fine fresh unmounted mint example CAT £60. £25



114

SG 204 3d purple/orange. A very fine used CDS example. £175



115

SG 208a 6d deep purple/rose-red. A fine fresh unmounted mint example CAT £60. £25



116

SG 210a 10d dull purple & deep dull carmine. Very fine used CAT £150. £65



117

SG 210b 10d dull purple & scarlet corner marginal example. Unmounted mint (hinged in margin) CAT £170. £95



119

SG 213 1/2d blue-green block of 4 with 1st day of issue Woodford green, April 17th 1900. £275



120

SG 214 1/- green & carmine. Very fine used with an upright Leeds, March 2nd 1901. £65



118

SG 212 1£ green. Very fine used with a crisply struck upright Wolverhampton CDS, June 21st 1895. Good colour & well centred. Lovely example. £525



121

SG 214 1/- green & carmine block of 4. Very fine used with Pontypool, March 14th 1901 CDS's. fine colours. £375



122

SG 197-214. 1887-92 Jubilee set of 14. 1/2d-1/-. Fine fresh unmounted mint examples CAT £1000. £450



123

SG 215-257 Edward set 1/2d-1/-. Very lightly mounted mint with good fresh colours. £130



124

SG 257a 1/- dull green & pale carmine Spec M46(2). Very fine used with a Melton Mowbray, Oct 5th 1909 CDS. £20



125

SG 260 2/6 lilac. Superb used with a crisply struck, Jan 21st 1903 CDS. £95



126

SG 260 2/6 slate-purple Spec M48(2). Very fine used with a Shaftsbury avenue, June 18th 1906 CDS. £65



127

SG 264 5/- deep bright carmine. Very fine used with a Harrow telephone exchange CDS, July 22nd 1907. £85



128

SG 265 10/- ultramarine. Very fine used with a Gracechurch CDS, 7th April 1910. £275



129

SG 265 10/- deep ultramarine. Very fine used, Jersey Oct 20th 1911 CDS. Good deep colour. £220



130

SG 275 1d aniline-pink. Fine used with a Liverpool exchange, June 15th 1911 CDS CAT £250. £85



131

SG 278 4d bright orange. Scarce block of 6. Very fine used with a Hebburn Co. Durham, Sept 1st 1911 CDS's. £130



132

SG 295 6d Royal purple. Very fine used with a St Austell, Nov 24th 1911 CDS CAT £90. £45



133

SG 301 6d dull purple on Dickinson coated paper. Very fine used with a Bury, St Edmunds CDS CAT £150. £65



134

SG 307 9d dull purple & blue corner marginal example. Very lightly mounted mint. £35



136

SG 309 Spec M44(4) 10d dull purple & deep scarlet. Very fine used CAT £200. Hendon cert. £75



137

SG 402 10/- indigo-blue vertical pair. Very fine used with good deep colour CAT £950. £475



138

SG 403. 1913 £1 green. Very fine used with a Guernsey CDS. RPS cert. £1250



139

SG 404 £1 dull blue-green vertical pair. Very fine used with Guernsey CDS's. £2400



140

G 410 5/- pale carmine. Very fine used part registered CDS leaving Kings profile clear. Good colour & well centred CAT £350. £240



141

SG 412 10/ blue. Very fine used CDS example CAT £900. £425



142

SG 412 10/- blue. Fine used, good colour & well centred CAT £900. £275



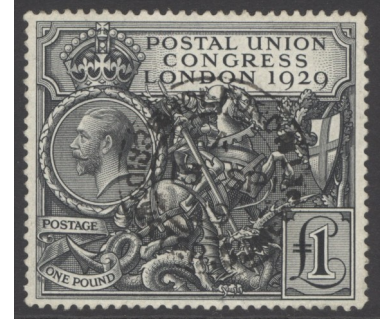
143

SG 413 10/- pale blue. Very fine used with a lightly placed CDS, leaving Kings profile clear. Good colour & well centred CAT £900. £575



144

SG 424. 4d grey-green variety inverted watermark. Very lightly mounted mint corner marginal example CAT £150. £75



145

SG 438. 1929 PUC £1 black. Very fine used perfectly centred with full perforations CDS dated 13th Sept 1929 CAT £600. £375



146

SG 452 10/- indigo block of 4. Very fine used with London CDS's CAT £300. £120



147

SG 536a-593a. 1955-58. 1st De La Rue set of 4. Unmounted mint marginal examples each with RPS cert. £350



148

SG 536a-539a. 1955-58 1st De La Rue set of 4. Fine unmounted mint CAT £400. £250



149

SG 536/539 1955 Waterlow High value set of 4. Fine unmounted mint each with RPS cert. £120



150

SG 536/539. 1955 Waterlow high value set of 4. Fine unmounted mint CAT £160. £85



151

SG 09a. 1882-1901. 5/- rose I.R. official with variety raised stop after R. Very fine used with an upright Newcastle-upon-tyne, Sept 16th 1895 CDS CAT £3200. RPS cert. £2200



152

SG 034. 1896-1902. 5d dull purple & blue. Very fine used CDS example. RPS cert. £425



153

SG 043a 1d lilac Army official, variety 'official'. Fine used CAT £150. £85



154

SG 045 6d purple/rose Army official. Very fine used part CDS leaving Queens profile clear CAT £60. £35



155

SG O50 6d pale dull purple strip of 4. Good used with Warrington double ringed CDS's. A scarce multiple. £85



156

SG O65a 1½d GOVT parcels. Fine used vertical pair with variety no dot under 'T' on lower stamp. £40



157

SG O67 9d dull purple & blue. GOVT parcels. Very fine used CAT £50. £35



158

SG O68 1/- dull green GOVT parcels. Very fine used. £85



159

SG O103 1½d dull purple & green Admiralty official. Very fine used with an East Cowes CDS, Jan 23rd 1904. £85



160

SG O105 2½d ultramarine Admiralty official. Very fine used. Hendon cert. £85



161

SG O106 3d purple/yellow. A very fine used CDS example. £65



162

SG O112. 1903. 3d purple/yellow Admiralty official. Very fine used. Hendon cert CAT £500. £275