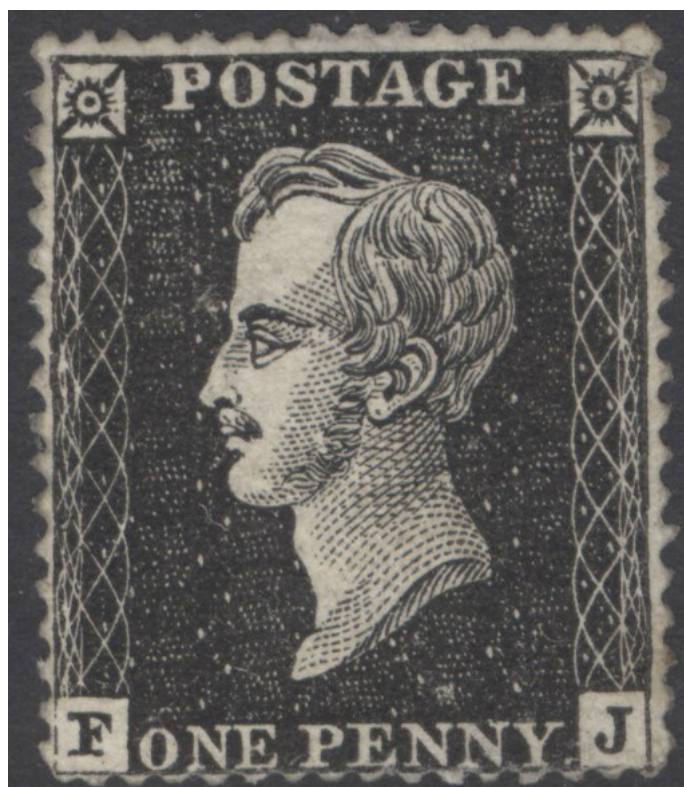


# British and colonial stamps

June part 1

Fine & rare Great Britain



1

view our online shop & lists-  
[www.stevenallenstamps.com](http://www.stevenallenstamps.com)

**10% Discount on Orders over £200**

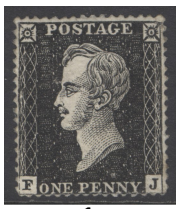
**15% Discount on Orders over £500**

Email: [Steveallen-orders@live.co.uk](mailto:Steveallen-orders@live.co.uk)

Tel: 02392 253 133/

07535200922





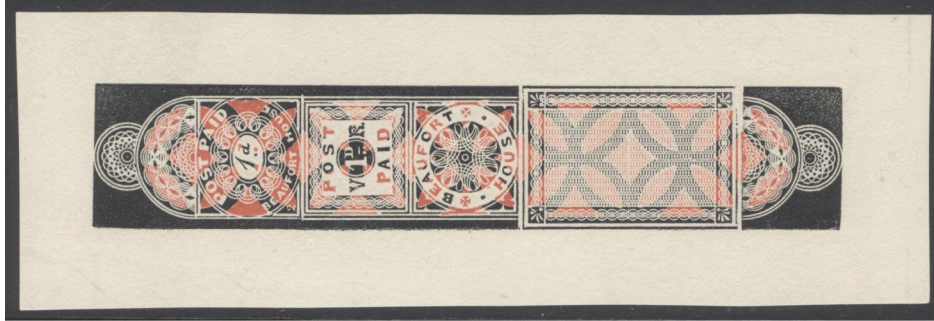
1

SG DP71(3c) 1850 Prince Consort Essay printed in black & perforated 16. A fine fresh example. Very scarce CAT £18,000. £5500



2

1839 Treasury competition by Charles Whiting 'Beaufort House' 'V.1d.R' essay. Superb fresh complete vertical impression in black & red. Seldom seen in this fine quality. £1175



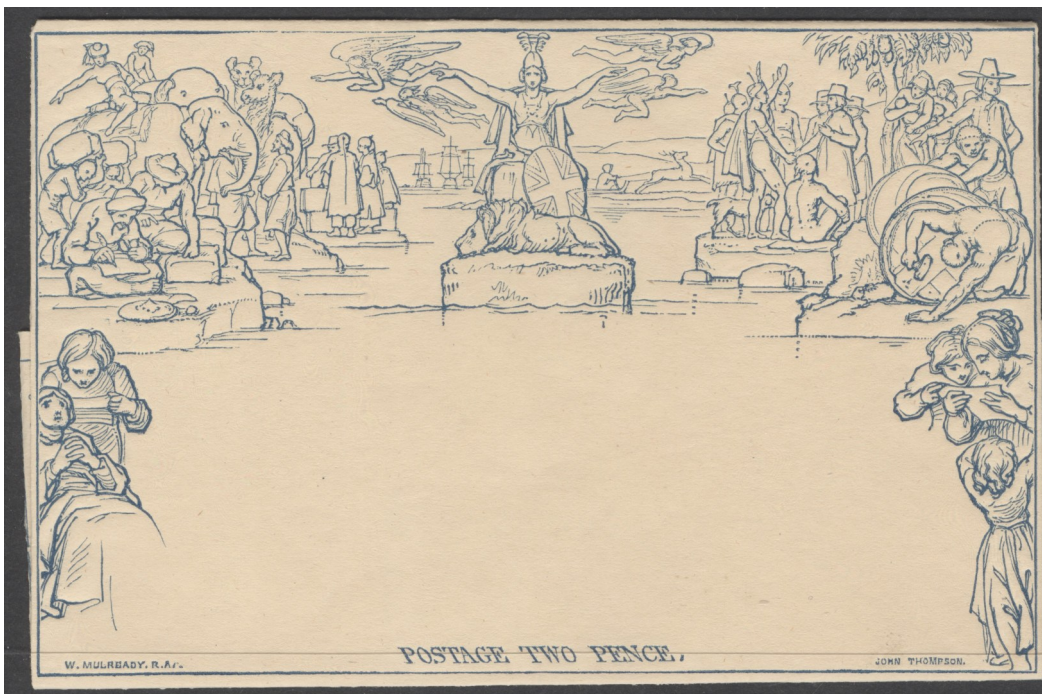
3

1838 Treasury competition essay 'Beaufort House 1d' in red & black. Exceptional quality. £950



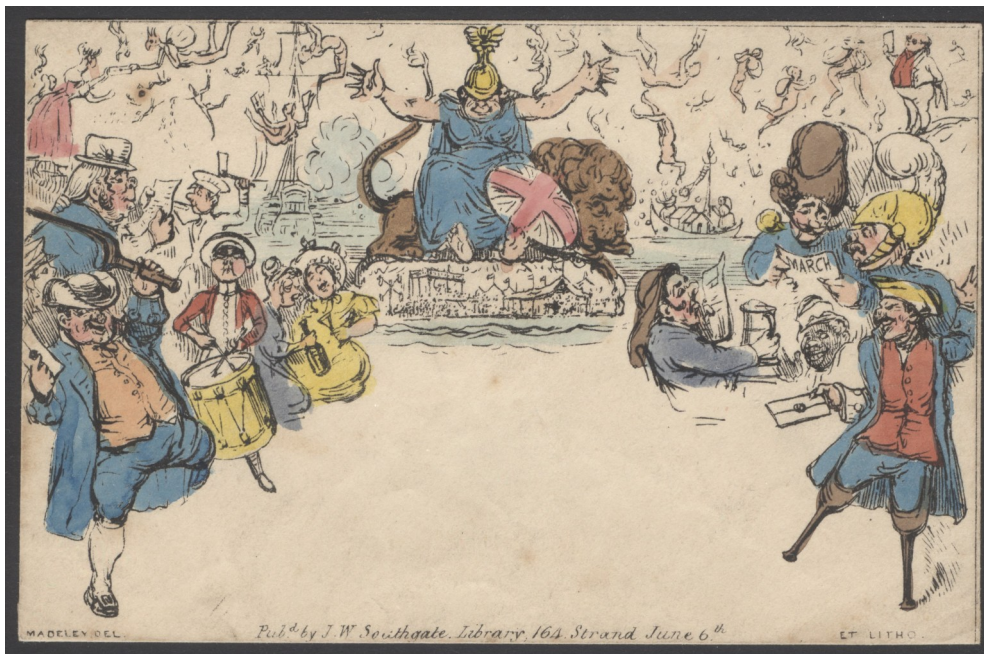
4

1839 Treasury competition re-entry by Dickinson for the 1d in ochre (one penny not to exceed one ounce). Folded as an envelope, few small reverse faults. Scarce. £325



5

SG M3 1840 2d blue letter sheet. Fine clean condition CAT £400. £220



6

1840 Southgate number 3 'Peg leg sailor' hand coloured envelope. Fine condition. £350



7

SG 1 1d black plate 2 lettered DJ. Very fine used with an upright deep red Maltese cross. 4 margins. £325



8

SG 3 1d grey-black plate 3 lettered BE. Very fine used with an orange-red Maltese cross. 4 margins. £275



9

SG 14f 1841 2d blue plate 3 lettered FI. Very fine used with an upright '6' in Maltese cross cancel. 4 margins CAT £650. £425



10

SG 14f 1841 2d blue strip of 6 lettered DA-DL. Very fine used with number '12' in Maltese crosses. Good to large margins at top & left side, slightly into at base. A scarce multiple CAT £2100. £475



11

SG 19 2d deep blue plate 4 block of 8. Fine used with '603' numerals, horizontal crease along top row & perf splits between stamp BF & BG on lower row. A very scarce multiple CAT £3000. £375



12

SG 40 1d rose-red. A fine fresh lightly mounted mint example with margin & inscription. £20



13

SG 43 1d rose-red plate 225. Fine used on envelope tied with London numeral & part CDS, Jan 28<sup>th</sup> 1880. £950



14

SG 48 ½d rose-red plate 4 block of 12. Un-mounted mint. A scarce multiple. £575



15

SG 48 ½d rose-red plate 20 corner marginal block of 16 with part inscription. Fresh mounted mint. A scarce multiple CAT £3200. £1900



16

SG 63 4d carmine, watermark medium garter on thick blued glazed paper. Very fine used with a '15' London numeral postmark. Lovely deep colour & well centred CAT £400. £175



17

SG 92 3d rose watermark emblems pair. Very fine used with '775' numerals (Tarpoley). £75



18

SG 93 4d dull vermilion plate 14. Very fine used with a St Thomas paid, Dec 29<sup>th</sup> 1875 CDS. £50



19

SG 93 4d dull vermilion plate 9. Very fine used with an upright Newcastle-on-Tyne, Sept 4<sup>th</sup> 1868 CDS. £60



20

SG 103 3d rose. Very fine used with a Marlow CDS, Sept 17<sup>th</sup> 1872. £45



21

SG 110 9d straw. Very fine used with a stock exchange, June 10<sup>th</sup> 1872 CDS. £130



22

SG 110 9d straw 1867-80 strip of 5 with inscription, marginal at top & bottom. Fine used with Seething Lane CDS's. Good deep colour. A scarce multiple. £675



23

SG 112s 10d red-brown pair, overprinted specimen. Pristine unmounted mint condition CAT £1000. £750



24

SG 112s 1-d red-brown, overprinted specimen. A pristine unmounted mint marginal example CAT £500. £375



25

SG 113 10d pale red-brown. Very fine used. Good colour & well centred. £90



26

SG 114 10d deep red-brown. Very fine used CDS example, June 1<sup>st</sup>



27

SG 117 1/- green plate 5. Very fine used with a Movable, May 3<sup>rd</sup> 1872 CDS. £30



28

SG 117 1/- green plate 6. Very fine used with an upright Kingstown, June 24<sup>th</sup> 1872. £25



29

SG 117 1/- green plate 6. Very fine used with a Benenden, Aug 16<sup>th</sup> 1872 CDS. £25



30

SG 117 1/- green plate 6. Very fine used with a Dundaly, Sept 26<sup>th</sup> 1872 CDS. £25



31

SG 117 1/- green plate 6. Very fine used with a Southampton CDS. £30



32

SG 118 2/- dull blue, overprinted specimen. A fine fresh mounted mint example CAT £600. £275



33

SG 122 6d very deep chestnut, top marginal. Very fine used with parts of 2 crisp Basingstoke 1872 April 19<sup>th</sup> CDS's (spec J79/1). £110



34

SG 122a 6d chestnut plate 11. Very fine used with a Castlereah, Sept 7<sup>th</sup> 1872 CDS. £50



35

SG 122b 6d pale chestnut plate 11. Very fine used with a Southampton head tele-phone office CDS, Aug 23<sup>rd</sup> 1872. £45



36

SG 123 6d pale buff plate 12. Very fine used Queens profile clear of cancel. £70



37

SG 125 6d grey. A fine fresh very lightly mounted mint example. £675



38

(SG 128s) 10/- colour trial in brown, overprinted specimen, type 9. A fine fresh lightly mounted mint example CAT £2400. £1275



39

(SG 129s) £1 colour trial in orange, overprinted specimen. Lightly mounted mint marginal example with part inscription CAT £2700. £1675



40

(SG 129s) £1 colour trial in blue, overprinted specimen, type 9. Very lightly mounted mint CAT £2700. £1500



41

(SG 129s) £1 colour trial in deep grey, overprinted specimen, type 9. Very lightly mounted mint CAT £2700. £1500



42

SG 129 £1 brown-lilac lettered GH watermark Maltese cross. Very fine used with an upright Dublin sorting office, Jan 31<sup>st</sup> 1879 CDS. Fine deep colour. BPA cert. £2200



43

SG 136 £1 brown-lilac, watermark large anchor on white paper. Very fine used with an upright 'box' Vere-street, Oct 12<sup>th</sup> 1883 CDS. Well centred & good colour. A lovely example CAT £6500. £4800



44

SG 137 £5 orange. Very fine used with a Manchester accounts CDS, Sept 7<sup>th</sup> 1897. Good deep colour & well centred. £2800



45

SG 141 2½d rosy-mauve plate 7. Very fine used with a Liverpool exchange, March 31<sup>st</sup> 1877. £85



46

SG 141 2½d rosy-mauve plate 9. Very fine used with a London hexagonal cancel. £65



47

SG 141 2½d rosy-mauve plate 15. Very fine used CDS example. £70



48

SG 143 3d rose plate 15. Very fine used with a Paddington, Oct 7<sup>th</sup> 1874 CDS. £60



49

SG 143 3d rose plate 16. A fine fresh very lightly mounted mint example. Good deep colour & well centred. £240



50

SG 143 3d rose plate 16. Unmounted mint, good deep colour. £325



51

SG 147 6d grey plate 13 block of 4. Very fine used with crisply struck Gatehouse, Nov 4<sup>th</sup> 1874 CDS's. a scarce multiple. £475



52

SG 152 4d vermilion plate 15. Very fine used with an upright Stalybridge, Oct 5<sup>th</sup> 1876 CDS. Good colour & well centred CAT £300. £220



53

SG 152 4d vermilion. Very fine used with a Northampton, March 29 1877 CDS CAT £300. £220



54

SG 153 4d sage-green plate 16. Very fine used with an Ipswich, Nov 6<sup>th</sup> 1878 CDS. £150



55

SG 156 8d orange. A fine fresh lightly mounted mint example. Good deep colour & well centred. £675



56

SG 159 3d on 3d lilac. Very fine used with a Hexam CDS with nice deep colour. £70



57

SG 161s 6d grey plate 18 overprinted specimen. A fine freshly mounted mint example. £190



58

SG 176 5/- rose on blued paper. A fine fresh mounted mint example CAT £12,500. David Brandon cert. £4200



59

SG 176 5/- rose on blued paper. A fine fresh mounted mint example CAT £12,500. David Brandon cert. £4200



60

SG 181 5/- crimson. Very fine used with a crisply struck Richmond, Surrey, March 29<sup>th</sup> 1897 CDS. Amazing deep colour. £90



61

SG 182 10/- cobalt. Very fine used with a Nottingham 1<sup>st</sup> April 1885 CDS. Scarce CAT £5000. RPS cert. £4800



62

SG 183 10/- ultramarine. Superb used with an upright Londonderry, May 22<sup>nd</sup> 1885 CDS. Good deep colour & well centred. £325



63

SG 185 £1 brown-lilac. A fine fresh very lightly mounted mint example being well centred & good colour. Very scarce CAT £18,000. £9750



64

SG 204 3d purple/orange. A fine fresh unmounted mint example CAT £1500. RPS cert. £1250



65

SG 212 £1 green. Very fine used with an upright Newcastle upon Tyne, Feb 27<sup>th</sup> 1891 CDS. Good deep colour & well centred. £525



66

Edward VII 1902-10. 1/2d & 1d bisets. Fine used on small pieces. £170



67

SG 244 spec M29(2) 5d slate purple & ultramarine. Fine unmounted CAT £120. £65



68

SG 251 9d slate purple & ultramarine. Very fine used with a crisply struck Woodbridge, May 18<sup>th</sup> 1906 CDS. £25



69

SG 254 10d dull purple & carmine block of 4. Fine used with Manchester CDS's. £60



70

SG 255a 10d slate purple & carmine, variety no cross on crown. Very fine used CDS example CAT £275. £85



71

SG 257 1/- dull green & carmine block of 4. Very fine used with Folkstone, May 17<sup>th</sup> 1907. Some perf splits on top pair. £60



72

SG 262 2/6 dull purple, chalky paper. A fine fresh lightly mounted mint example. £175



**73**

SG 262 2/6 dull purple, chalky paper. Very fine used with a Liverpool Landing stage, Oct 21<sup>st</sup> 1905 CDS. £75



**74**

SG 265 10/- deep ultramarine Spec M53 (2). Very fine used with a Portsmouth, Feb 25<sup>th</sup> 1903 CDS. Lovely deep colour & well centred. £275



**75**

SG 266 £1 dull blue-green. Very fine used with a Bath, February 19<sup>th</sup> 1903 CDS. £425



**76**

SG 272a 1d rose-red, no watermark. Fine used. £45



**77**

SG 273 Spec M6(3) 1d intense rose-red. Fine used CAT £160. £60



**78**

SG 275. 1911 Harrison perf 14, 1d anti-line-pink. A fine used example outstanding shade, showing spectacular golden orange fluorescence under the lamp. CDS Aug 1911 CAT £250. £95



**79**

SG 277 3d purple/lemon, perf 14. Very fine used CDS example CAT £300. £130



**80**

SG 285 3d purple/lemon. Very fine used block of 4 with a Stamford single CDS. £25



**81**

SG 292 2d grey-green & bright carmine. A fine fresh unmounted mint marginal block of 6 CAT £330. £150



**82**

SG 306 9d reddish-purple & light blue. Very fine used with an Isle of Wight Ventnor CDS CAT £75. £30



**83**

SG 306a 9d deep dull reddish-purple & deep bright blue. Very fine used CDS example CAT £65. £20



**84**

SG 307 9d dull reddish-purple & blue. A fine fresh marginal example CAT £130. £65



85

SG 311 10d dull reddish-purple & carmine. Very fine used with a Manchester, July 16<sup>th</sup> 1912 CDS. £20



86

SG 311 10d dull reddish-purple & carmine marginal example. Unmounted mint (hinged in top margin) CAT £150. £75



87

SG 313 1/- deep green & scarlet block of 4. Very fine used with Westbourne, Oct 10<sup>th</sup> 1911 CDS's. £65



88

SG 317 2/6 dark purple. Very fine used with a Liverpool exchange CDS, Jan 1<sup>st</sup> 1913. £75



89

SG 364a 1 1/2d chestnut 'pencf' error. Fine fresh lightly mounted mint CAT £125. £50



90

SG 451 5/- bright rose. Very fine used with a crisply struck Mount-Pleasant circulation 26<sup>th</sup> Nov 1934. Fine deep colour & well centred. £45



91

SG O4, O13, O14 & O15 I.R. officials. A remarkable piece of multi frankings. 1/2d, 2 1/2d x2, 6d & 1/- x4, 3<sup>rd</sup> July 1901. £750



92

SG L8(4)bs 10/- ultramarine, white paper I.R. official specimen with blue/black overprint. Lightly mounted mint CAT £2750. RPS cert. £1850



93

SG O9ds 10/- ultramarine on blued paper, overprinted specimen with genuine essay overprint I.R. in black. A fine fresh mounted mint example. Very scarce CAT £15,000. BPA cert. £6800



94

SG O10b 10/- ultramarine I.R. official, overprint in blue/black. Very fine used with Accounts branch, Glasgow oval CAT £4500. BPA cert. £2700 10

No. 172641

THE ROYAL PHILATELIC SOCIETY  
LONDON



41, Devonshire Place,  
London, W1N 1PE

Meeting of ... - 4 NOV 1998

AFTER CONSULTATION

In the OPINION of The EXPERT COMMITTEE the item  
described as

Great Britain: 1902-04 S.G. No. 027

£1. Ink Blue-green - used - 18

Genuine

*Reur*  
Chairman



Submitted by *H. Köhler*

95

SG 027 £1 blue-green 1902-04. Fine used with Aberdeen CDS's. Well centred & good colour. Very scarce. RPS cert. £17,500



96

SG 041a 1/2d vermilion Army official variety  
'official'. Fine used CAT £130. £75



97

SG 041a 1/2d vermilion Army official variety  
'official'. Fine used on small piece. £75



98

SG O44 2½d Army official, remarkable block of 12. Fine used, few perf splits & light crease. A scarce multiple. £325.



99

SG O48q ½d blue-green Army official. Very fine used on small piece with variety 'C' for 'O'. £45



100

SG O52 6d pale dull purple Army official, type 2. Very fine used part CDS cancel, leaving Kings profile clear CAT £950. David Brandon cert (when in a pair). £750



101

SG O69a 1d lilac GOVT parcels variety no dot under 'T'. Unmounted mint marginal example CVAT £160. £130



102

SG O69a 1d lilac GOVT parcels variety no dot under 'T'. Fine used. £45



103

SG O69c 1d lilac GOVT parcels, variety overprint inverted. Very fine used CAT £3500. BPA cert. Very scarce. £2400



104

SG O72a 1/- green & carmine GOVT parcels, variety overprint inverted. Good used, rarely seen CAT £15,000. RPS cert. £9500



105

SG O82 1/- green & carmine, overprinted Board of education. A superb unmounted mint example. David Brandon & Wenvoe certs. Rare in this quality CAT £12,000. £9750